

XXXXXX

This image displays a complex quilted fabric pattern. The design is composed of a repeating arrangement of geometric shapes, primarily triangles and squares, in a variety of colors including deep green, earthy brown, and navy blue. These solid-colored shapes are interspersed with lighter, patterned fabrics that feature subtle floral or damask motifs. The entire composition is set against a light beige background. The quilted texture is evident from the visible stitching lines that define the individual blocks and triangles, creating a three-dimensional effect. The overall aesthetic is traditional and sophisticated, typical of high-quality textile design.

by AGF

XXXXXXXXXXXXXXXXXXXX

Windblown

QUILT DESIGNED BY AGFstudio



Vert FUSION



FUS-VR-2302
SONIC FLORA VERT
by AGF Studio



FUS-VR-2309
BANDANA VERT
by Maureen Cracknell



FUS-VR-2303
DROPLET PETAL VERT
by Pat Bravo



FUS-VR-2307
WINDSWEPT VERT
by AGF Studio



FUS-VR-2305
TRÈS STREAKED VERT
by Bari J.



FUS-VR-2308
VENTURE VERT
by Sharon Holland



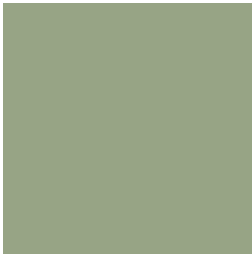
FUS-VR-2304
EXPRESSIONS VERT
by Pat Bravo



ADDITIONAL BLENDERS FOR THIS PROJECT



PE-440
MACCHIATTO



PE-502
FRESH SAGE



PE-432
SANDSTONE



PE-501
NORTHERN WATERS



FINISHED SIZE | 61" x 61"

FABRIC REQUIREMENTS

Fabric A	PE-440	½ yd.
Fabric B	PE-502	¾ yd.
Fabric C	FUS-VR-2302	½ yd.
Fabric D	FUS-VR-2309	⅝ yd.
Fabric E	FUS-VR-2303	1⅛ yd.
Fabric F	FUS-VR-2307	¾ yd.
Fabric G	FUS-VR-2305	¾ yd.
Fabric H	FUS-VR-2308	½ yd.
Fabric I	PE-432	⅝ yd.
Fabric J	PE-501	¼ yd.
Fabric K	FUS-VR-2304	¾ yd.

BACKING FABRIC
FUS-VR-2302 4 yds (*Suggested*)

BINDING FABRIC
Fabric **I** PE-432 (*Included*)

CUTTING DIRECTIONS

¼" seam allowances are included.
WOF means width of fabric.

- Twenty eight (28) triangle template from fabric **A**.
- Twenty (20) triangle template 1 from fabric **B**.
- Thirty five (35) triangle template from fabric **C**.
- Fifty (50) triangle template from fabric **D**.
- Eighty nine (89) triangle template from fabric **E**.
- Twenty five (25) triangle template from fabric **F**.
- Eighteen (18) triangle template from fabric **G**.
- Thirty one (31) triangle template from fabric **H**.
- Eighteen (18) triangle template from fabric **I**.
- Ten (10) triangle template from fabric **J**.
- Twenty six (26) triangle template from fabric **K**.

CONSTRUCTION

Sew all rights sides together with ¼" seam allowance.

- Follow the diagram on the next page for each row assembly.

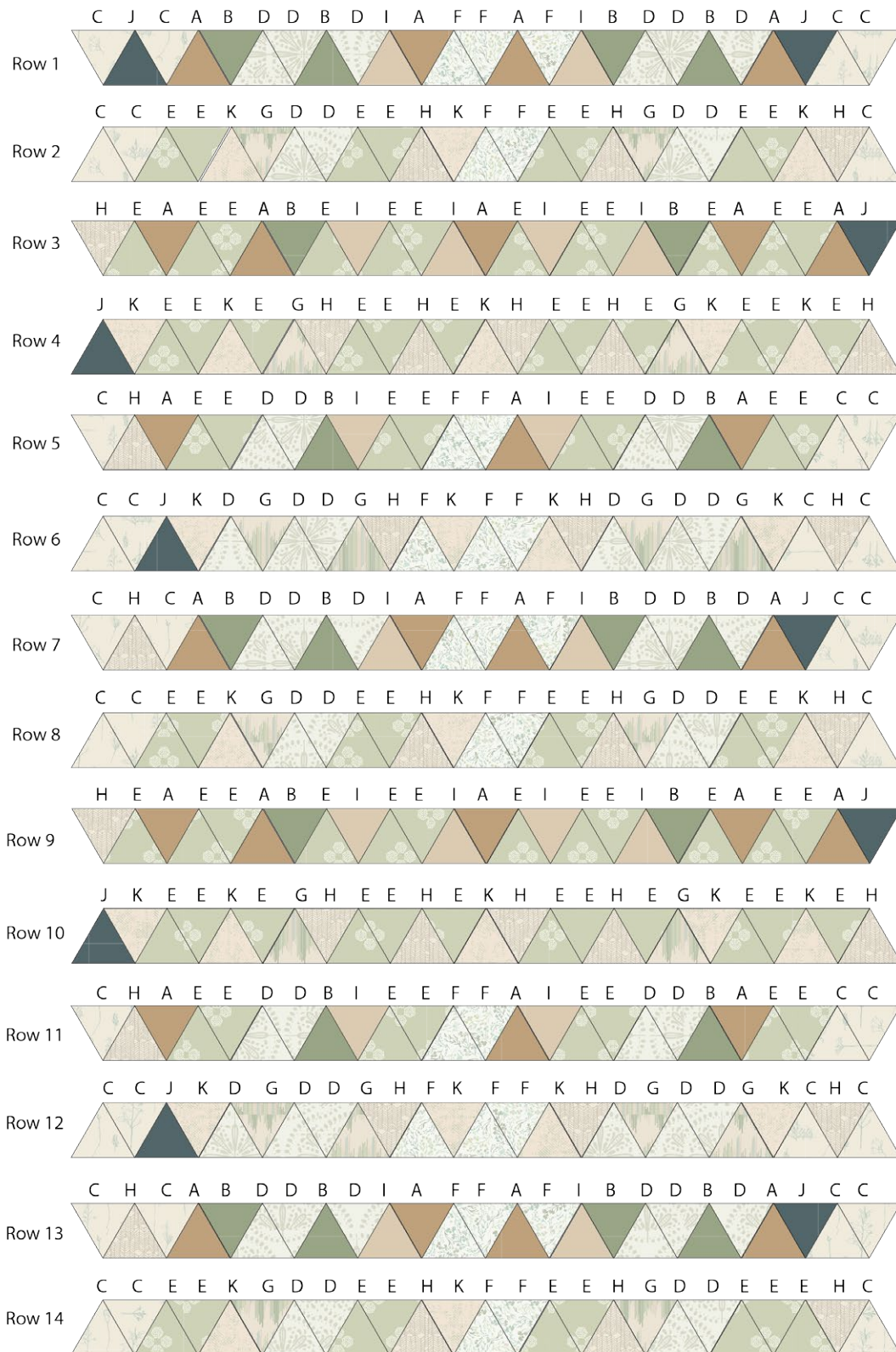


DIAGRAM 1

- Join rows 1-14.
- Trim the quilt top to 61" x 61".

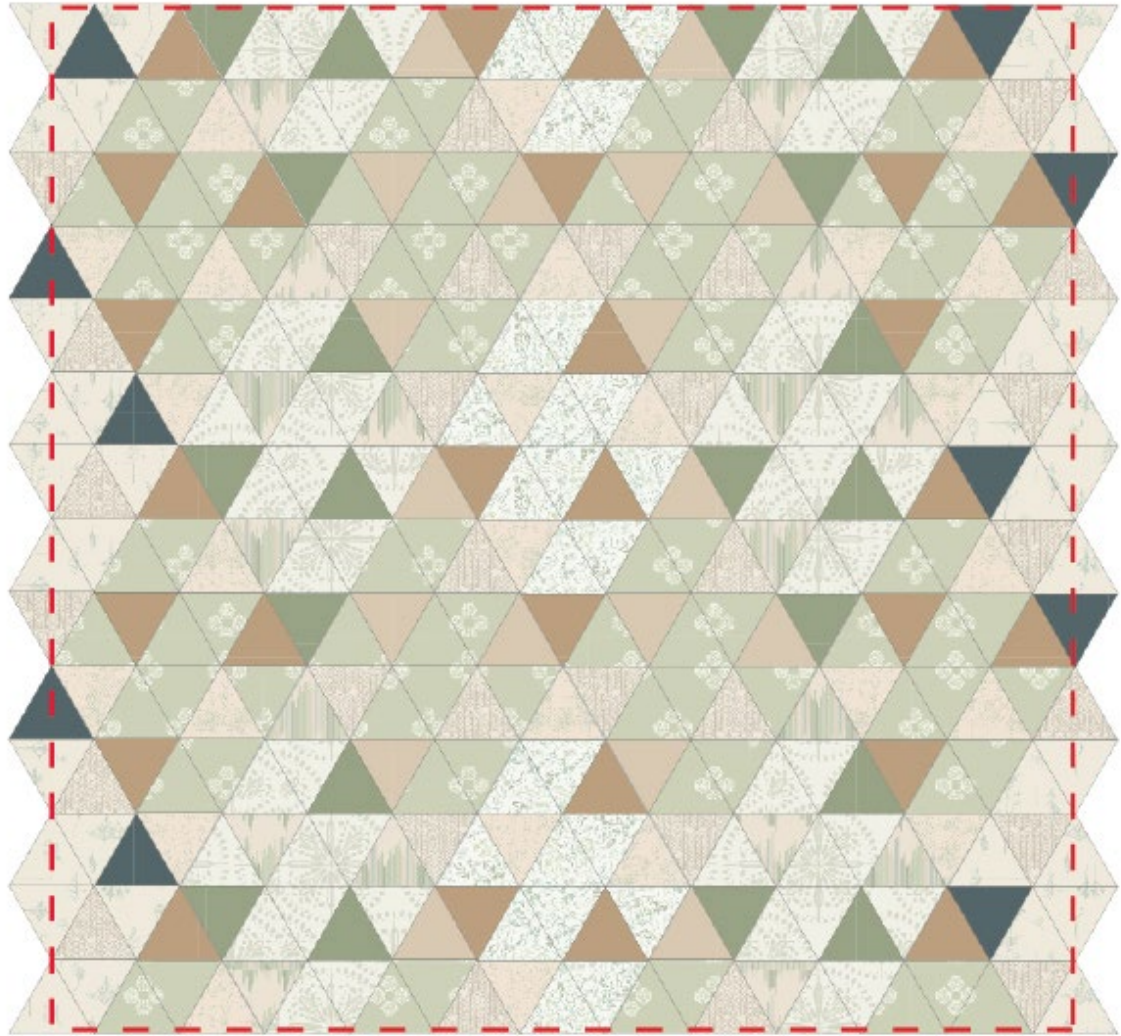


DIAGRAM 2

QUILT ASSEMBLY

Sew rights sides together.

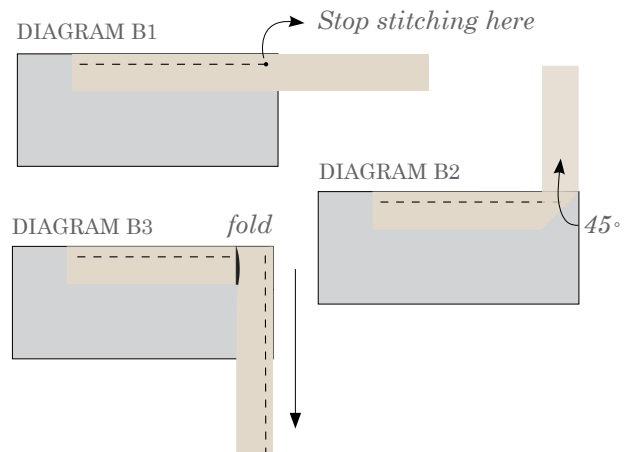
- Place BACKING FABRIC on a large surface wrong side up. Stretch it with masking tape against that surface.
- Place BATTING on top of backing fabric.
- Place TOP on top of the batting with right side facing up. Smooth away wrinkles using your hands.
- Pin all layers together and baste with basting thread, using long stitches. You can also use safety pins to join the layers.
- Machine or hand quilt starting at the center and working towards the corners. Remember that quilting motifs are a matter of personal preference. Have fun choosing yours!
- After you finished, trim excess of any fabric or batting, squaring the quilt to proceed to bind it.

- Stop stitching before you reach the last 5 or 6 inches. Cut the threads and remove the quilt from under the machine presser foot. Lay the loose ends of the binding flat along the quilt edge, folding the ends back on themselves where they meet. Press them together to form a crease. Using this crease as the stitching line, sew the two open ends of the binding with right sides together (you can help yourself marking with a pencil if the crease is difficult to see).
- Trim seam to $\frac{1}{4}$ " and press open. Complete the sewing. Turn binding to back of the quilt, turn raw edge inside and stitch by hand using blind stitch.

BINDING

Sew rights sides together.

- Cut enough strips $1\frac{1}{2}$ " wide by the width of the fabric **I** to make a final strip 254" long. Start sewing the binding strip in the middle of one of the sides of the quilt, placing the strip right side down and leaving an approximated 5" tail. Sew with $\frac{1}{4}$ " seam allowance (using straight stitch), aligning the strip's raw edge with the quilt top's raw edge.
- Stop stitching $\frac{1}{4}$ " before the edge of the quilt (DIAGRAM B 1). Clip the threads. Remove the quilt from under the machine presser foot. Fold the strip in a motion of 45° and upward, pressing with your fingers (DIAGRAM B2). Hold this fold with your finger, bring the strip down in line with the next edge, making a horizontal fold that aligns with the top edge of the quilt (DIAGRAM B3). Start sewing at $\frac{1}{4}$ " of the border, stitching all the layers. Do the same in the four corners of the quilt.



XXXXXXXXXXXXXXXXXXXXXXXXXXXXXXXXXXXX

*Congratulations
& enjoy*

XXXXXXXXXXXXXXXXXXXXXXXXXXXXXXXXXXXX



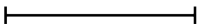
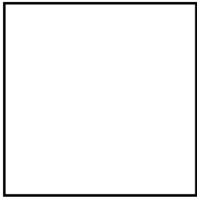
artgalleryfabrics.com

NOTE: While all possible care has been taken to ensure the accuracy of this pattern, We are not responsible for printing errors or the way in which individual work varies.

Please read instructions carefully before starting the construction of this quilt. If desired, wash and iron your fabrics before starting to cut.

© 2021 Courtesy of Art Gallery Quilts LLC. All Rights Reserved.

Printer Test



1" Square

