

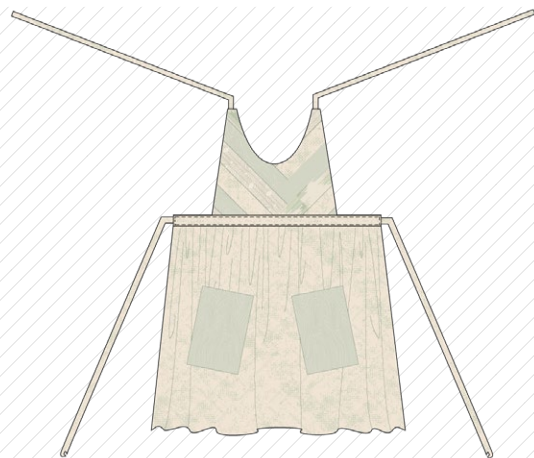
XXXXXX

A woman with blonde hair tied in a bun, wearing a white short-sleeved shirt and a white apron with a V-neckline and two large pockets. She is standing against a wooden background.

XXXXXXXXXXXXXXXXXXXX

Vetiver

APRON
DESIGNED BY AGFstudio



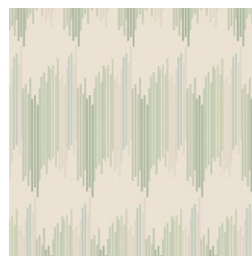
Vert FUSION



FUS-VR-2301
RIPPLING TERRAIN VERT
by AGF Studio



FUS-VR-2308
VENTURE VERT
by Sharon Holland



FUS-VR-2305
TRÈS STREAKED VERT
by Bari J.



FUS-VR-2304
EXPRESSIONS VERT
by Pat Bravo

ADDITIONAL BLENDERS FOR THIS PROJECT



PE-419
LIGHT GREY



Vetiver

APRON

FABRIC REQUIREMENTS

Fabric A	FUS-VR-2301	$\frac{1}{8}$ yd.
Fabric B	FUS-VR-2308	F8.
Fabric C	FUS-VR-2305	F8.
Fabric D	PE-419	$\frac{1}{8}$ yd.
Fabric E	FUS-VR-2304	$1\frac{1}{4}$ yd.

CUTTING DIRECTIONS

$\frac{1}{4}$ " seam allowances are included.
WOF means width of fabric.

- Three (3) 15" x 2½" strips from fabric **A**.
- Two (2) 8" x 9" rectangles from fabric **A**.
- Three (3) 15" x 2½" strips from fabric **B**.
- Two (2) 15" x 2½" strips from fabric **C**.
- One (1) 15" x 2½" strip from fabric **D**.
- Three (3) 15" x 2½" strips from fabric **E**.
- One (1) bodice template from fabric **E**. (See diagram 4)
- One (1) 20" x WOF rectangle from fabric **E**.
- Two (2) 25" x 2" strip from fabric **E**.
- Four (4) 28" x 2" strip from fabric **E**.

CONSTRUCTION

Sew all rights sides together with $\frac{1}{4}$ " seam allowance.

Block 1 Construction:

- Take three (3) 15" x 2½" strips from fabrics **A**, **B**, and **E**, two (2) 15" x 2½" strips from fabric **C**, and one (1) 15" x 2½" strip from fabric **D**.
- Join them following diagrams 1 and 2.

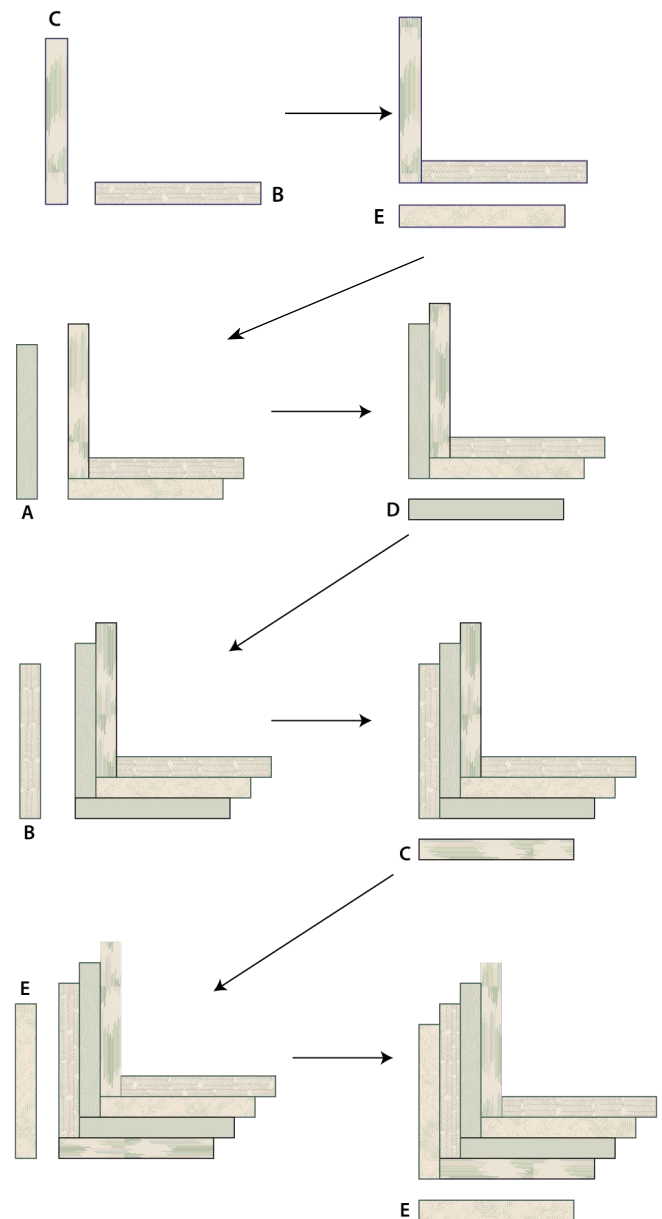
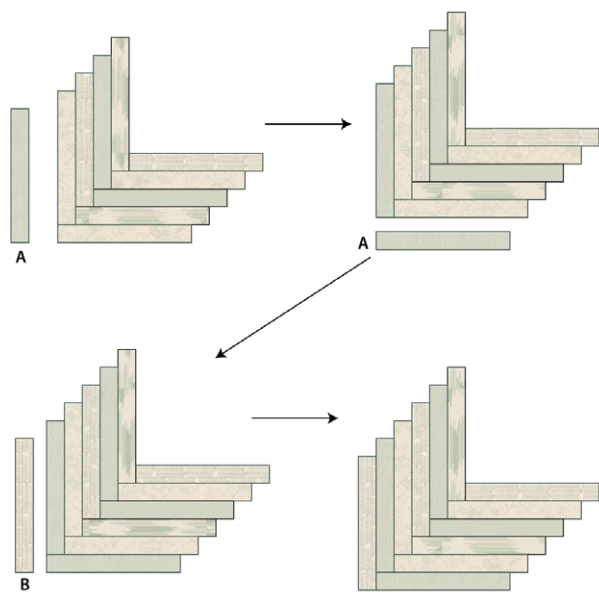


DIAGRAM 1



Block 1

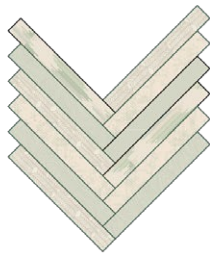


DIAGRAM 2

Bodice Pattern:

- Draw a 15" x 13" rectangle. Make a AB line in the center of the rectangle.
- Make a CD in the horizontal center of the rectangle.
- Mark E, where line AB and CD intersect.
- Draw line FG 2½" from the left edge of the rectangle.
- Draw line HI 2½" from the right edge of the rectangle.
- Mark point J and J' at ½" from point F, and point K and K' at ½" from point H.
- Mark points L, M, N, and O.
- See diagram 3 for reference.

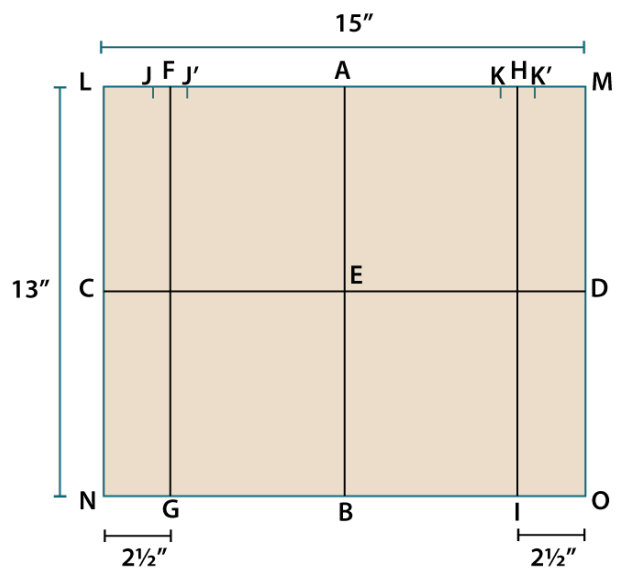


DIAGRAM 3

- Draw the pattern, following the points: J - J' - E - K - K' - O - B - N, and cut it.
- Fold the pattern by the EB line and draw a curve line from J' to E by the neckline and trim the excess fabric.
- Open your paper to find the bodice pattern piece.

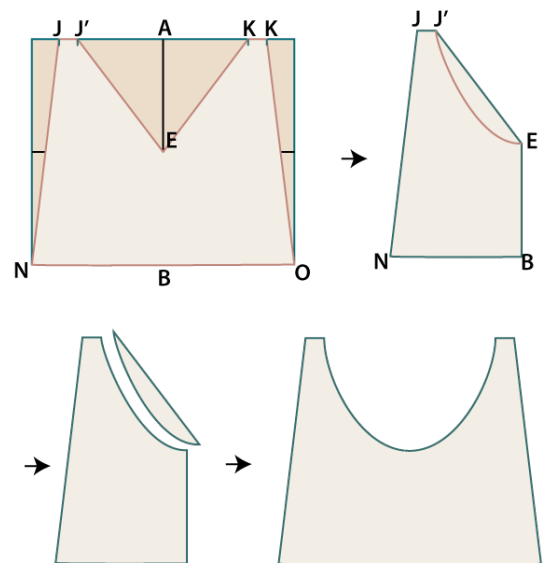


DIAGRAM 4

- Place the bodice template on top of block 1 and cut following the edges of the template.

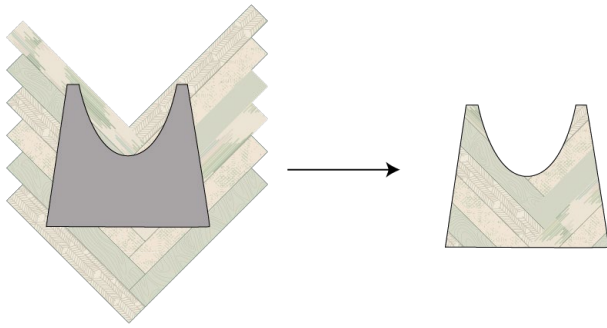


DIAGRAM 5

Apron Skirt

- Take one (1) 25" x 2" strip from fabric **E**, one (1) 20" x WOF rectangle from fabric **E** and two (2) 8" x 9" rectangles from fabric **B**.
- Sew the pockets to the 20" x WOF rectangle from fabric **E**. See diagram 6.
- Gather the top edge of the 20" x WOF rectangle from fabric **E** using the width of the 25" x 2" strip from fabric **E** as reference.

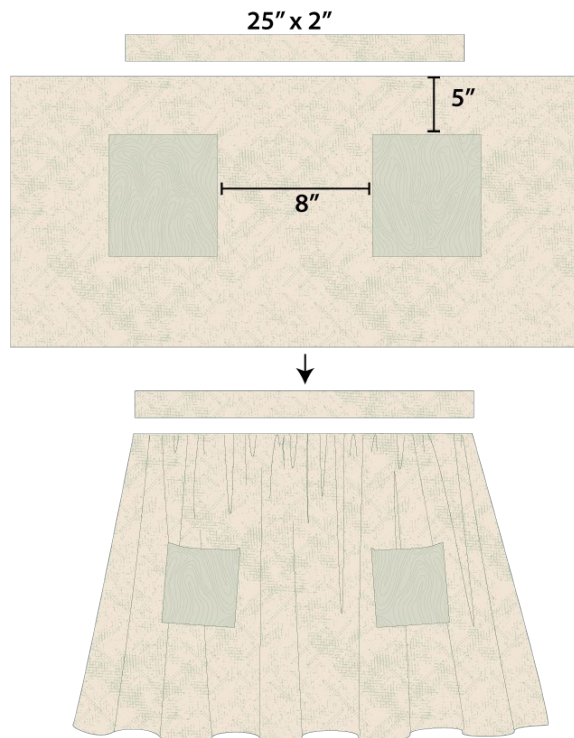


DIAGRAM 6

- Clean the four (4) ties and insert two (2) of them in between the bodice lining and the bodice block by the shoulder line. Make sure that the bodice lining and the bodice block are facing right sides. Pin the ties to secure them.
- Sew all around it and leave the bottom part open.
- Turn it inside out . Press.

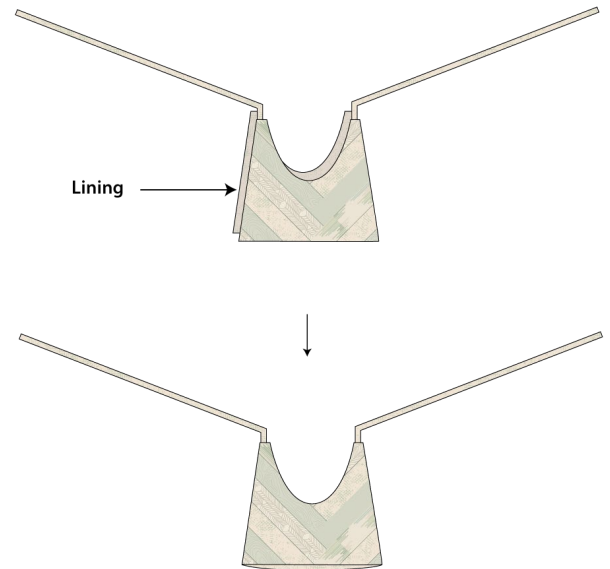


DIAGRAM 7

- Take one (1) 25" x 2" strip from fabric **E** and make a ¼" fold towards the wrong side of the fabric and press.



DIAGRAM 8

- Repeat the same steps on the other three sides of the 25" x 2" strip from fabric **E**.

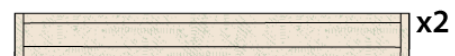
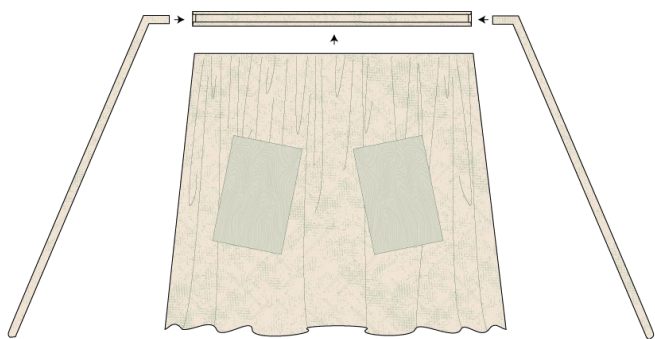


DIAGRAM 9

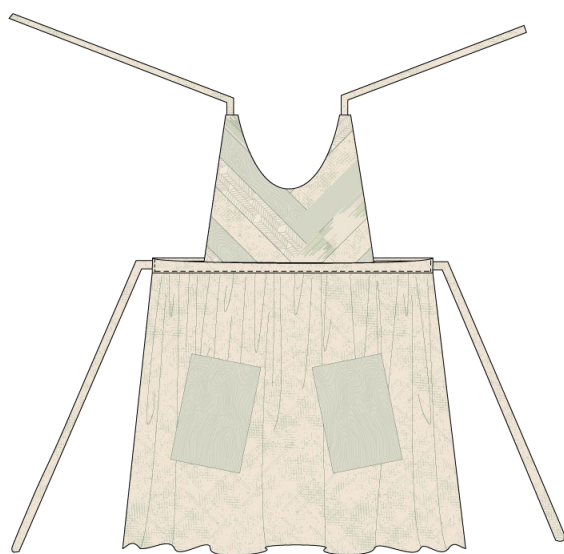
- Place the other two (2) ties on the short ends of the folded 25" x 2" strip from fabric **E** and pin them.
- Place the top of the gathered skirt at the bottom of the folded 25" x 2" strip from fabric **E** and pin it to secure it.



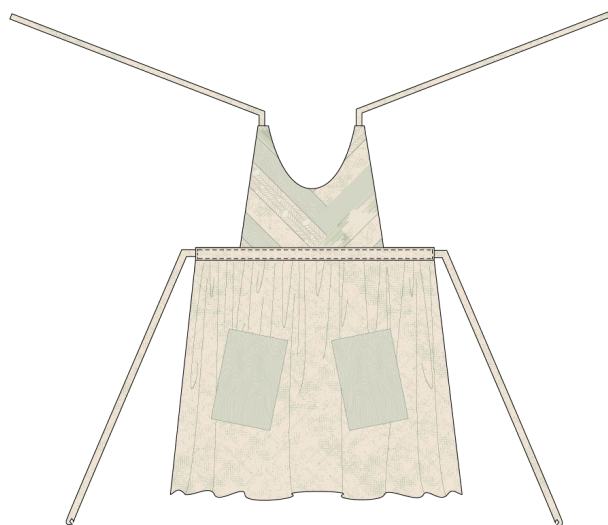
- Place the other 25" x 2" folded strip from fabric **E** on top and top stitch on the short ends and bottom.



- Align the bodice to the center of the waistband and insert it in the opening of the previously sewn piece, pin it in place and top stitch the upper part.



- Enjoy.



XXXXXXXXXXXXXXXXXXXXXXXXXXXXXXXXXXXX

*Congratulations
& enjoy*

XXXXXXXXXXXXXXXXXXXXXXXXXXXXXXXXXXXX



artgalleryfabrics.com

NOTE: While all possible care has been taken to ensure the accuracy of this pattern, We are not responsible for printing errors or the way in which individual work varies.

Please read instructions carefully before starting the construction of this quilt. If desired, wash and iron your fabrics before starting to cut.

© 2021 Courtesy of Art Gallery Quilts LLC. All Rights Reserved.