

Quilted Hat

FABRIC REQUIREMENTS + TEMPLATES
vvvvvvvvvvvv



Quilted Hat

FABRIC REQUIREMENTS + TEMPLATES
vvvvvvvvvvvv

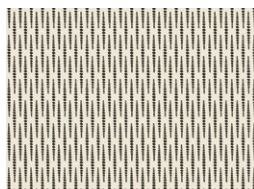
DESIGNED BY AGFstudio



FABRICS DESIGNED BY MAUREEN CRACKNELL



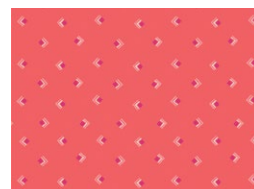
OPH-14350
FLOWERING LOVE



OPH-14351
REFLECTIONS TINTED



OPH-14354
BETTER TOGETHER



OPH-14353
EVERLASTING TOKENS
CORAL

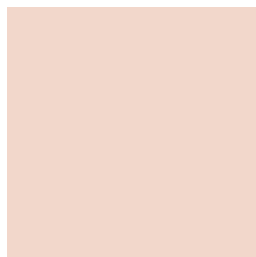


OPH-24355
BLOOMING ESSENCE



FEEL THE DIFFERENCE © 2021 Courtesy of Art Gallery Quilts LLC. All Rights Reserved.

ADDITIONAL BLENDERS FOR THIS PROJECT



PE-471
SWEET MACADAMIA



DSE-723
SUBTLE SAGE



DEN-S-2004
INFUSED HYDRANGEA

Quilted Hat

FABRIC REQUIREMENTS + TEMPLATES

FINISHED SIZE | One Size

FABRIC REQUIREMENTS

| | | |
|-----------------|------------|-------|
| Fabric A | OPH-14350 | ¼ yd. |
| Fabric B | OPH-14354 | ¼ yd. |
| Fabric C | OPH-14351 | ¼ yd. |
| Fabric D | OPH-14353 | ¼ yd. |
| Fabric E | OPH-24355 | ¼ yd. |
| Fabric F | DSE-723 | ¼ yd. |
| Fabric G | PE-471 | ¼ yd. |
| Fabric H | DEN-S-2004 | 1 Yd. |

Extra Materials
Cotton Batting
3" Stiff Horse Hair



Stiff Horse Hair

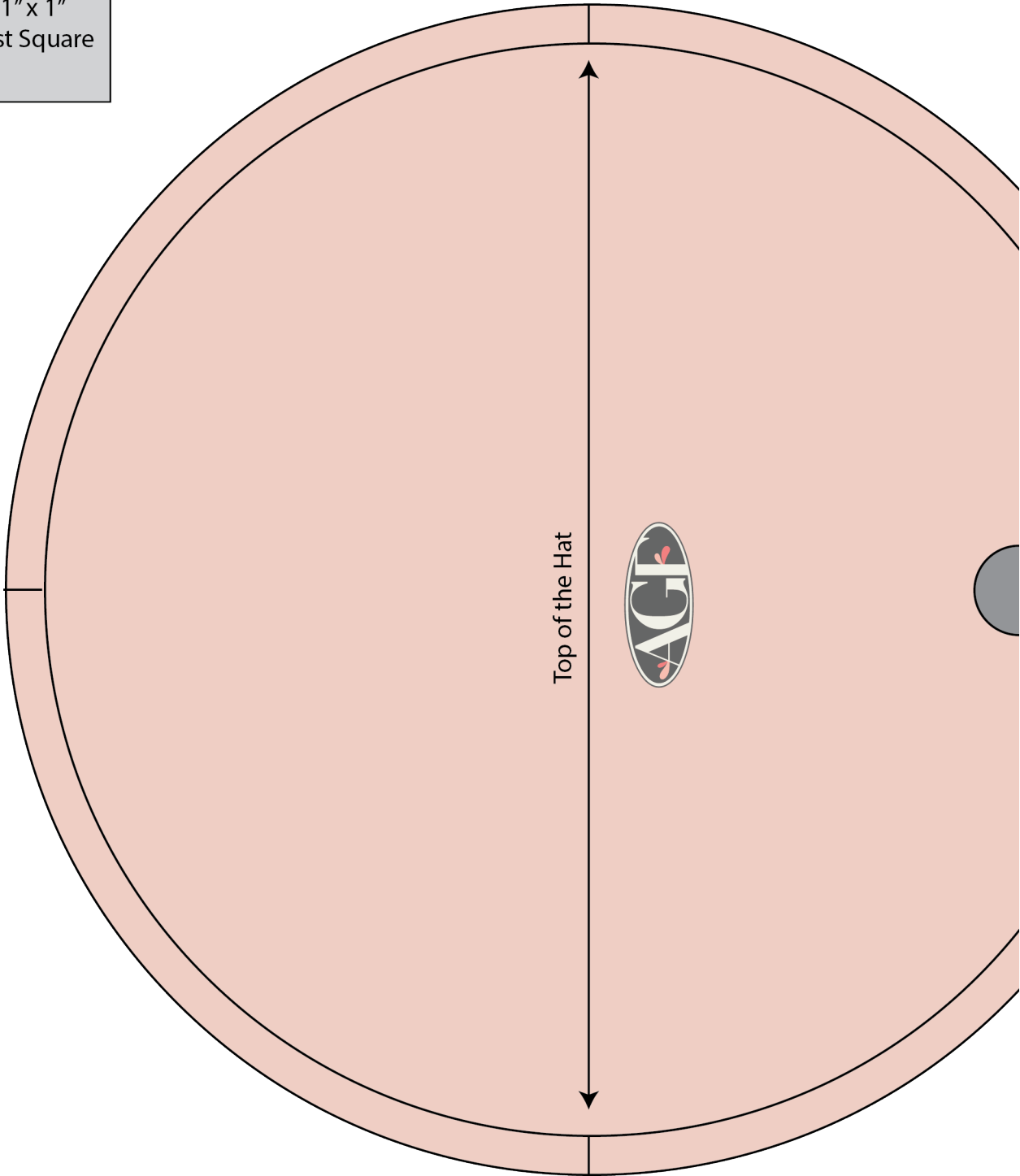
CONSTRUCTION

Go to our blog post:

- <https://www.agfblog.com/2020/07/quilted-hat-tutorial-rosewood-fusion-fabrics.html>

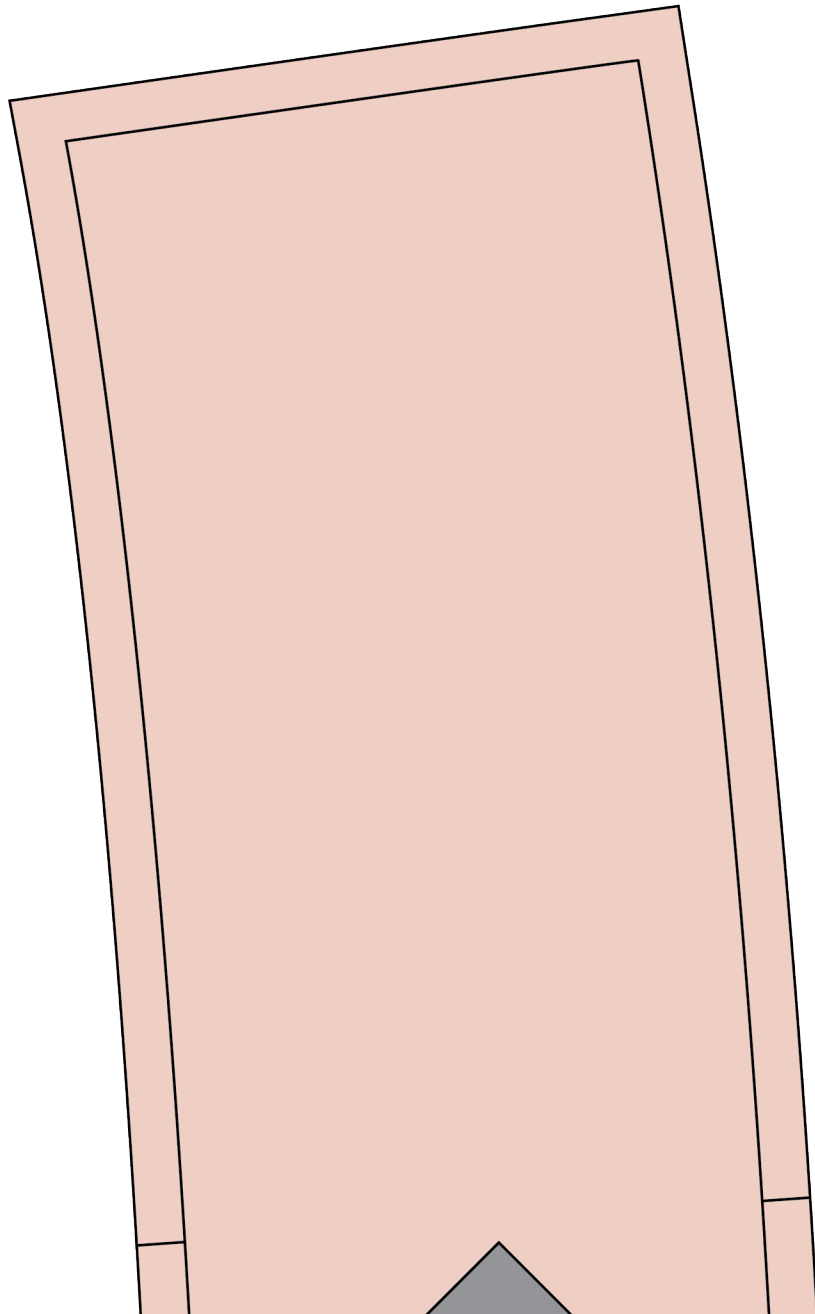
TEMPLATES

1" x 1"
Test Square

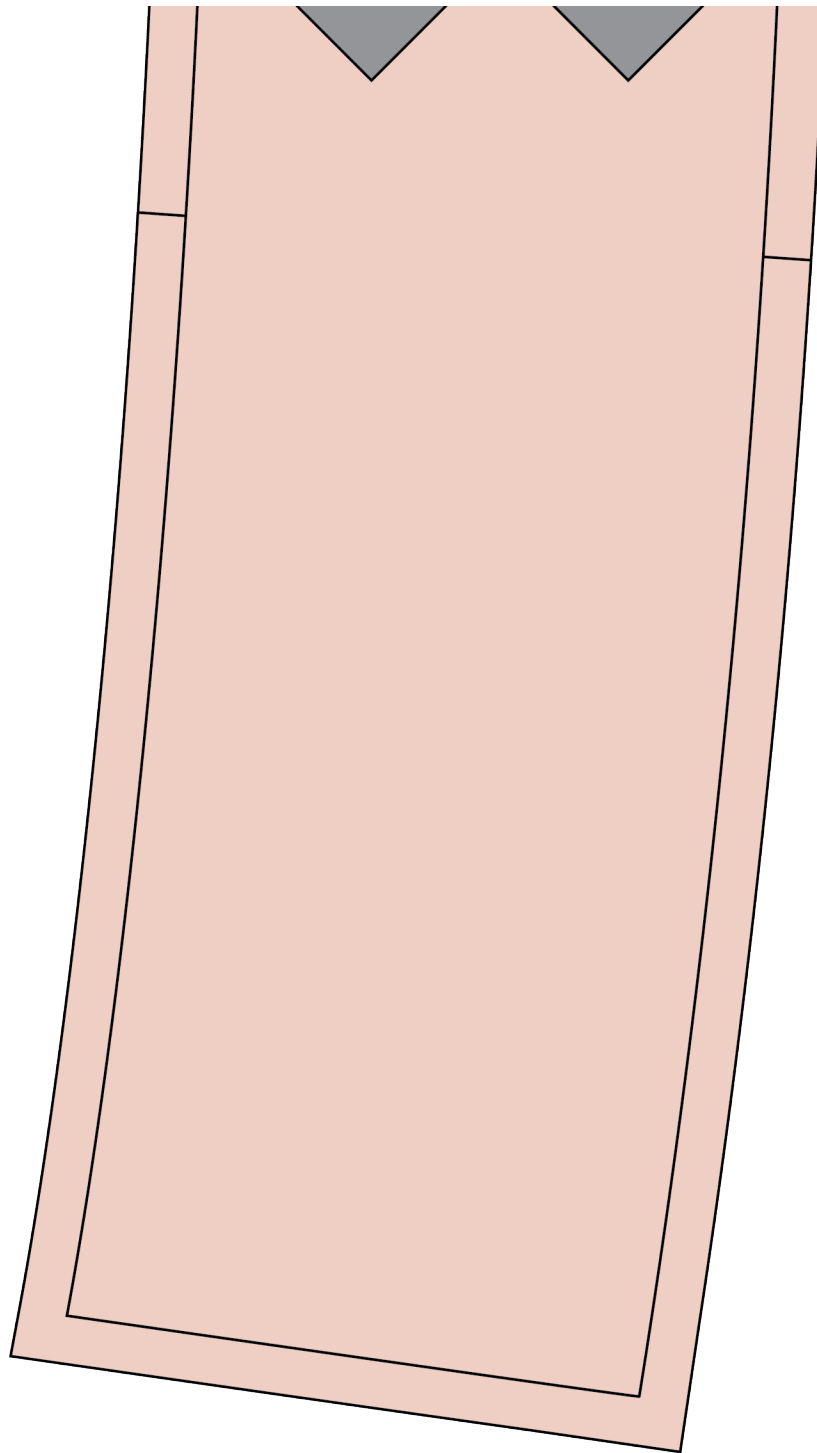












XXXXXXXXXXXXXXXXXXXXXXXXXXXX

*Congratulations
& enjoy*

XXXXXXXXXXXXXXXXXXXXXXXXXXXX



artgalleryfabrics.com

NOTE: While all possible care has been taken to ensure the accuracy of this pattern, We are not responsible for printing errors or the way in which individual work varies.

Please read instructions carefully before starting the construction of this quilt. If desired, wash and iron your fabrics before starting to cut.

© 2021 Courtesy of Art Gallery Quilts LLC. All Rights Reserved.