

X
X
X
X
X
X
X
X
X
X
X
X
X

A quilted wall hanging with two green and beige panels, holding wooden spoons and spatulas. Below it are a stack of plates, a bowl of grapes, and potted plants.

by AGF

XXXXXXXXXXXXXXXXXXXXXXXXXXXX

Elemental

KITCHEN POCKET

DESIGNED BY AGFstudio



Vert FUSION



FUS-VR-2301
RIPPLING TERRAIN VERT
by AGF Studio

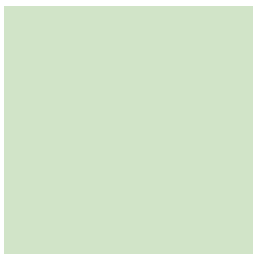


FUS-VR-2307
WINDSWEPT VERT
by AGF Studio



FUS-VR-2308
VENTURE VERT
by Sharon Holland

ADDITIONAL BLENDERS FOR THIS PROJECT



PE-443
SWEET MINT



Elemental

KITCHEN POCKET

FINISHED SIZE | 18" x 9½"

FABRIC REQUIREMENTS

Fabric A	FUS-BL-1800	Fat 8.
Fabric B	FUS-BL-1801	½ yd.
Fabric C	FUS-BL-1802	Fat ¼.
Fabric D	FUS-BL-1804	Fat 8.

BACKING & BINDING FABRIC

Fabric **B** FUS-BL-1801 (Included)

EXTRA MATERIALS

One (1) ½" x 18" Hardwood Dowel Stick.

CUTTING DIRECTIONS

¼" seam allowances are included.
WOF means width of fabric.

Eight (8) petal templates from fabric **A**.

Eight (8) 1½" squares from fabric **A**.

Two (2) 18" x 9½" rectangles from fabric **B**.

One (1) 1½" x WOF strip from fabric **B** for the binding.

One (1) 3" x WOF strip from fabric **B**.

Eight (8) 1½" x 6½" strips from fabric **C**.

Two (2) 8½" squares from fabric **C**.

Two (2) 6½" squares from fabric **D**.

CONSTRUCTION

Sew all rights sides together with ¼" seam allowance.

- Start with the construction of your front pockets.
- For each pocket you'll need four (4) petal templates from fabric **B**, one (1) 6½" square from fabric **D**, four (4) 1½" x 6½" strips from fabric **C** and four (4) 1½" squares from fabric **A**.
- Use Steam-A-Seam to applique four (4) fabric **A** petals on top of each 6½" square from fabric **D** and form a flower as shown in the diagram below.
- Top stitch around the petals to secure them in place.

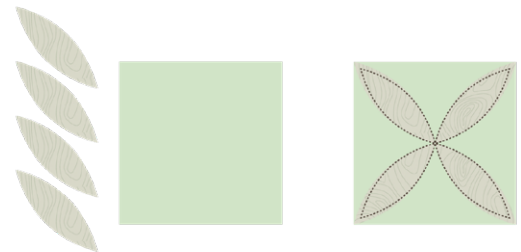


DIAGRAM 1

- Take two (2) 1½" x 6½" strips from fabric **C** and attach them to the top and bottom of the flower block.

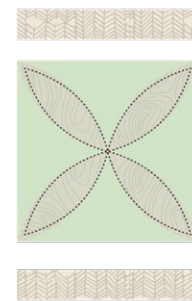


DIAGRAM 2

- Take two (2) 1½" x 6½" strips from fabric **C** and four (4) 1½" squares from fabric **A**.
- Attach the squares to the ends of the strips as shown in the diagram below.



DIAGRAM 3

- Now, attach the strips to the pocket block, add batting when the block is finished.

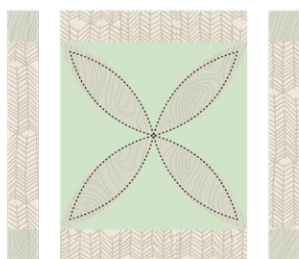


DIAGRAM 4

- Take one (1) $8\frac{1}{2}$ " square from fabric **C** and place it on top of the front pocket right side of fabrics together and aligned.
- Sew all the way around leaving an opening big enough to turn the pocket inside out.
- Top stitch the top and quilt as desired, make a total of two (2) pockets.



Opening



DIAGRAM 5

- Bring the two (2) $18" \times 9\frac{1}{2}"$ rectangles from fabric **B** and sandwich a batting rectangle in between the rectangles.
- Quilt as desired.

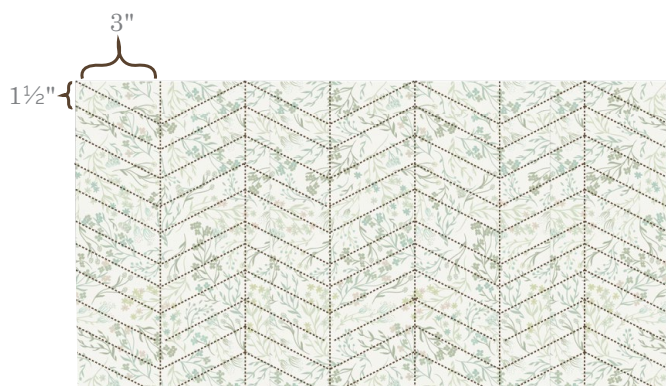


DIAGRAM 6

- Place the pockets on top and pin them in place $\frac{1}{2}"$ away from the side edges as shown in diagram 7.

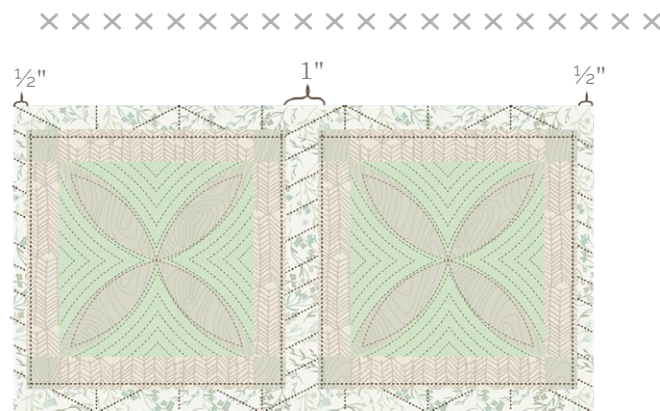


DIAGRAM 7

- Use the $3" \times \text{WOF}$ strip from fabric **B** to create three (3) $\frac{3}{4}" \times 4"$ handle strips.
- Fold the strip in half and iron to leave a line mark.
- Unfold, and now bring the long edges to meet towards the center marked line, press.
- Fold the strip again in half and press.
- You should have a $\frac{3}{4}" \times \text{WOF}$ strip, top stitch $\frac{1}{8}"$ away from each edge.
- Subcut into three (3) $4\frac{1}{2}"$ strips.
- Use the $1\frac{1}{2}" \times \text{WOF}$ strip to bind it, make sure to fold the handle strips and hide them in the binding at the back of the kitchen pockets.

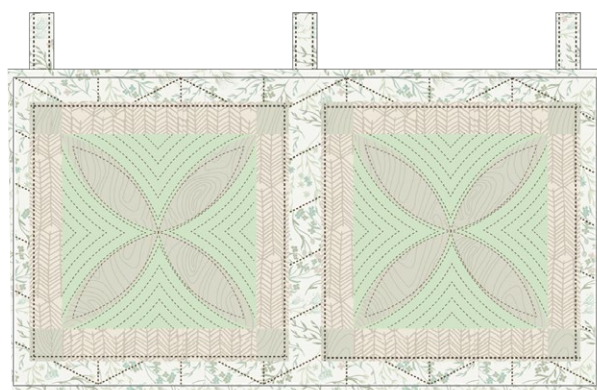
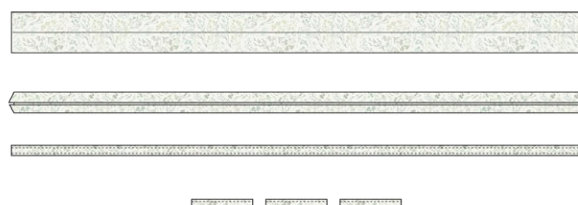


DIAGRAM 7

XXXXXXXXXXXXXXXXXXXXXXXXXXXXXXXXXXXX

*Congratulations
& enjoy*

XXXXXXXXXXXXXXXXXXXXXXXXXXXXXXXXXXXX



artgalleryfabrics.com

NOTE: While all possible care has been taken to ensure the accuracy of this pattern, We are not responsible for printing errors or the way in which individual work varies.

Please read instructions carefully before starting the construction of this quilt. If desired, wash and iron your fabrics before starting to cut.

© 2021 Courtesy of Art Gallery Quilts LLC. All Rights Reserved.

