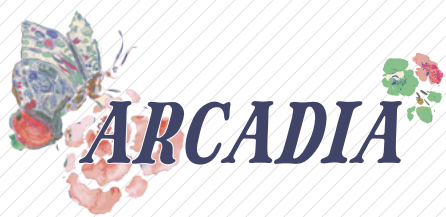


X
X
X
X
X
X
X
X
X
X
X
X
X



XXXXXXXXXXXXXXXXXXXXXXXXXXXX

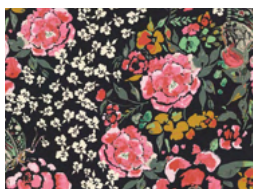




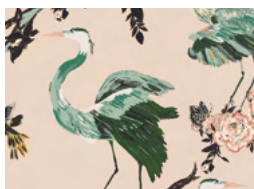
QUILT DESIGNED BY AGFstudio



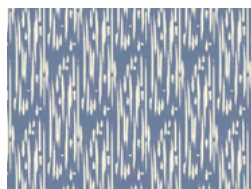
FABRICS DESIGNED BY BARI J.



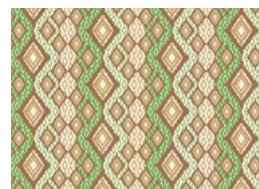
EVE-29800
JARDIN ROBUST



EVE-29802
HERONS GRACE



EVE-39803
SHIBORI AZURE



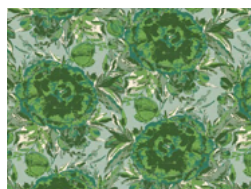
EVE-39807
EXOTIC BANDANA PERIDOT



EVE-29807
EXOTIC BANDANA RUBY



EVE-29801
BEDROCK AMOROUS



EVE-39805
ROSEFIELD EMERALD

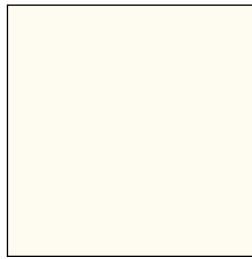


FEEL THE DIFFERENCE © 2021 Courtesy of Art Gallery Quilts LLC. All Rights Reserved.

ADDITIONAL BLENDERS FOR THIS PROJECT



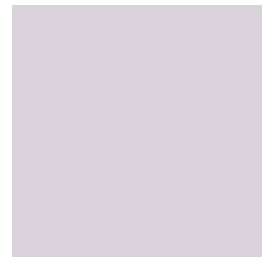
DSE-708
INDIGO SKY



PE-408
WHITE LINEN



PE-475
VERY BERRY



PE-470
LAVENDER WATER



FINISHED SIZE | 72" x 72"

FABRIC REQUIREMENTS

Fabric A	EVE-29800	1 yd.
Fabric B	EVE-29802	$\frac{1}{4}$ yd.
Fabric C	DSE-708	$\frac{7}{8}$ yd.
Fabric D	EVE-39803	1 yd.
Fabric E	PE-408	$1\frac{1}{4}$ yd.
Fabric F	EVE-39807	$1\frac{1}{8}$ yd.
Fabric G	EVE-29807	$\frac{3}{8}$ yd.
Fabric H	PE-475	$\frac{1}{4}$ yd.
Fabric I	PE-470	$\frac{5}{8}$ yd.
Fabric J	EVE-29801	$\frac{3}{4}$ yd.
Fabric K	EVE-39805	$\frac{3}{8}$ yd.

BACKING FABRIC

EVE-29800 5 yds (*Suggested*)

BINDING FABRIC

Fabric **K** EVE-39805 (*Included*)

CUTTING DIRECTIONS

*$\frac{1}{4}$ " seam allowances are included.
WOF means width of fabric.*

Fabric A

- Thirteen (13) $6\frac{1}{2}$ " squares.
- Three (3) $18\frac{1}{2}$ " x $2\frac{1}{2}$ " rectangles.
- One (1) $16\frac{1}{2}$ " x $2\frac{1}{2}$ " rectangles.
- One (1) $14\frac{1}{2}$ " x $2\frac{1}{2}$ " rectangle.
- One (1) $12\frac{1}{2}$ " x $2\frac{1}{2}$ " rectangle.
- One (1) $10\frac{1}{2}$ " x $2\frac{1}{2}$ " rectangles.
- One (1) $8\frac{1}{2}$ " x $2\frac{1}{2}$ " rectangle.
- Five (5) $6\frac{1}{2}$ " x $2\frac{1}{2}$ " rectangles.
- Nine (9) $2\frac{1}{2}$ " squares.

Fabric B

- Three (3) $6\frac{1}{2}$ " squares.

Fabric C

- One (1) $18\frac{1}{2}$ " x $2\frac{1}{2}$ " rectangles.
- One (1) $16\frac{1}{2}$ " x $2\frac{1}{2}$ " rectangles.
- Four (4) $14\frac{1}{2}$ " x $2\frac{1}{2}$ " rectangles.
- Three (3) $12\frac{1}{2}$ " x $2\frac{1}{2}$ " rectangles.
- Five (5) $10\frac{1}{2}$ " x $2\frac{1}{2}$ " rectangles.
- Eight (8) $8\frac{1}{2}$ " x $2\frac{1}{2}$ " rectangles.
- Three (3) $6\frac{1}{2}$ " x $2\frac{1}{2}$ " rectangles.
- Three (3) $4\frac{1}{2}$ " x $2\frac{1}{2}$ " rectangles.
- One (1) $4\frac{1}{2}$ " squares.
- Twelve (12) $2\frac{1}{2}$ " squares.

Fabric D

- Three (3) $18\frac{1}{2}$ " x $2\frac{1}{2}$ " rectangles.
- Three (3) $16\frac{1}{2}$ " x $2\frac{1}{2}$ " rectangles.
- Two (2) $14\frac{1}{2}$ " x $2\frac{1}{2}$ " rectangles.
- Five (5) $12\frac{1}{2}$ " x $2\frac{1}{2}$ " rectangles.
- Four (4) $10\frac{1}{2}$ " x $2\frac{1}{2}$ " rectangles.
- Six (6) $8\frac{1}{2}$ " x $2\frac{1}{2}$ " rectangles.
- Four (4) $6\frac{1}{2}$ " x $2\frac{1}{2}$ " rectangles.

- Three (3) 4½" squares.
- Ten (10) 2½" squares.

Fabric E

- Three (3) 18½" x 2½" rectangles.
- Five (5) 16½" x 2½" rectangles.
- Nine (9) 14½" x 2½" rectangles.
- One (1) 12½" x 2½" rectangles.
- Five (5) 10½" x 2½" rectangles.
- Three (3) 8½" x 2½" rectangles.
- Three (3) 6½" x 2½" rectangles.
- Seven (7) 4½" x 2½" rectangles.
- Three (3) 4½" squares.
- Six (6) 2½" squares.

Fabric F

- Six (6) 16½" x 2½" rectangles.
- Two (2) 14½" x 2½" rectangles.
- Four (4) 10½" x 2½" rectangles.
- Fifteen (15) 8½" x 2½" rectangles.
- Seventeen (17) 6½" x 2½" rectangles.
- One (1) 4½" x 2½" rectangles.
- Five (5) 2½" squares.

Fabric G

- One (1) 18½" x 2½" rectangles.
- Three (3) 12½" x 2½" rectangles.
- One (1) 10½" x 2½" rectangles.
- Three (3) 6½" x 2½" rectangles.
- Two (2) 4½" squares.
- Two (2) 2½" squares.

Fabric H

- One (1) 12½" x 2½" rectangles.
- One (1) 10½" x 2½" rectangles.
- Two (2) 8½" x 2½" rectangles.
- One (2) 6½" x 2½" rectangles.
- Two (2) 4½" squares.

Fabric I

- Six (6) 16½" x 2½" rectangles.
- Three (3) 14½" x 2½" rectangles.
- Two (2) 12½" x 2½" rectangles.
- Three (3) 10½" x 2½" rectangles.
- Three (3) 6½" x 2½" rectangles.
- Three (3) 4½" squares
- Four (4) 2½" squares.

Fabric J

- Two (2) 18½" x 2½" rectangles.
- One (1) 12½" x 2½" rectangles.
- Nine (9) 10½" x 2½" rectangles.
- Ten (10) 8½" x 2½" rectangles.
- Two (2) 6½" x 2½" rectangle.
- One (1) 4½" x 2½" rectangles.
- Three (3) 4½" squares.

CONSTRUCTION

Sew all rights sides together with $\frac{1}{4}$ " seam allowance.



Block 1:

- One (1) $5\frac{1}{2}$ " square from fabric **A**.
- One (1) $18\frac{1}{2}$ " x $2\frac{1}{2}$ " rectangle from fabric **A**.
- One (1) $6\frac{1}{2}$ " x $2\frac{1}{2}$ " rectangle from fabric **A**.
- One (1) $2\frac{1}{2}$ " square from fabric **A**.
- One (2) $14\frac{1}{2}$ " x $2\frac{1}{2}$ " rectangle from fabric **E**.
- One (1) $12\frac{1}{2}$ " x $2\frac{1}{2}$ " rectangle from fabric **E**.
- One (1) $4\frac{1}{2}$ " x $2\frac{1}{2}$ " rectangle from fabric **E**.
- One (1) $8\frac{1}{2}$ " x $2\frac{1}{2}$ " rectangle from fabric **F**.
- One (1) $6\frac{1}{2}$ " x $2\frac{1}{2}$ " rectangle from fabric **F**.
- One (1) $12\frac{1}{2}$ " x $2\frac{1}{2}$ " rectangle from fabric **I**.
- One (1) $6\frac{1}{2}$ " x $2\frac{1}{2}$ " rectangle from fabric **I**.
- One (1) $4\frac{1}{2}$ " square from fabric **I**.
- One (1) $18\frac{1}{2}$ " x $2\frac{1}{2}$ " rectangle from fabric **J**.
- One (1) $12\frac{1}{2}$ " x $2\frac{1}{2}$ " rectangle from fabric **J**.
- One (1) $10\frac{1}{2}$ " x $2\frac{1}{2}$ " rectangle from fabric **J**.
- One (1) $8\frac{1}{2}$ " x $2\frac{1}{2}$ " rectangle from fabric **J**.

- Join one (1) $6\frac{1}{2}$ " x $2\frac{1}{2}$ " rectangle from fabric **A** and **I** and then join on the left side of the assembled piece, one (1) $4\frac{1}{2}$ " square from fabric **I**.

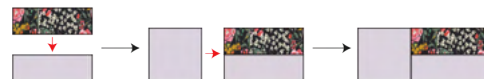


DIAGRAM 1

- Join one (1) $2\frac{1}{2}$ " square from fabric **A** on the top part of one (1) $12\frac{1}{2}$ " x $2\frac{1}{2}$ " rectangle from fabric **I**.



DIAGRAM 2

- Join one (1) $12\frac{1}{2}$ " x $2\frac{1}{2}$ " rectangle from fabric **E** and **J**.
- Then, join one (1) $4\frac{1}{2}$ " x $2\frac{1}{2}$ " rectangle from fabric **E** on the right side of the assembled unit.



DIAGRAM 3

- Follow steps 1-10 in order to assemble block 1.

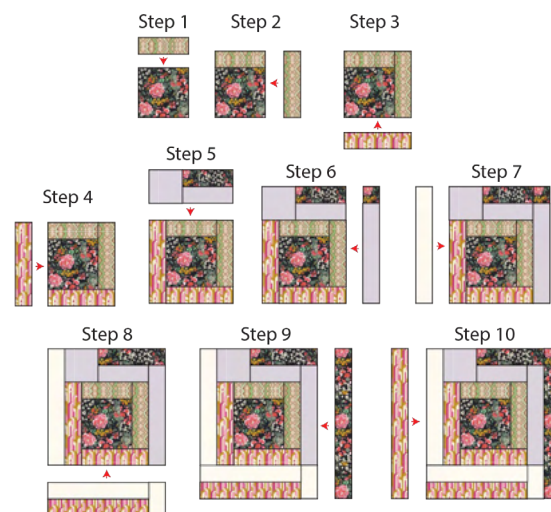


DIAGRAM 4



- Two (2) $6\frac{1}{2}$ " squares from fabric **A**.
- Two (2) $10\frac{1}{2}$ " x $2\frac{1}{2}$ " rectangles from fabric **C**.
- Two (2) $8\frac{1}{2}$ " x $2\frac{1}{2}$ " rectangles from fabric **C**.
- Two (2) $18\frac{1}{2}$ " x $2\frac{1}{2}$ " rectangles from fabric **D**.
- Two (2) $14\frac{1}{2}$ " x $2\frac{1}{2}$ " rectangles from fabric **D**.
- Two (2) $10\frac{1}{2}$ " x $2\frac{1}{2}$ " rectangles from fabric **D**.
- Two (2) $6\frac{1}{2}$ " x $2\frac{1}{2}$ " rectangles from fabric **D**.
- Four (4) $2\frac{1}{2}$ " squares from fabric **D**.
- Two (2) $10\frac{1}{2}$ " x $2\frac{1}{2}$ " rectangles from fabric **E**.
- Two (2) $8\frac{1}{2}$ " x $2\frac{1}{2}$ " rectangles from fabric **E**.
- Two (2) $4\frac{1}{2}$ " x $2\frac{1}{2}$ " rectangles from fabric **E**.
- Two (2) $4\frac{1}{2}$ " squares from fabric **E**.
- Two (2) $2\frac{1}{2}$ " squares from fabric **E**.
- Two (2) $8\frac{1}{2}$ " x $2\frac{1}{2}$ " rectangles from fabric **F**.
- Two (2) $6\frac{1}{2}$ " x $2\frac{1}{2}$ " rectangles from fabric **F**.
- Two (2) $16\frac{1}{2}$ " x $2\frac{1}{2}$ " rectangles from fabric **I**.
- Two (2) $10\frac{1}{2}$ " x $2\frac{1}{2}$ " rectangles from fabric **I**.

- Join one (1) $6\frac{1}{2}$ " x $2\frac{1}{2}$ " rectangle from fabrics **D** and **E**.
- Then, take one (1) $4\frac{1}{2}$ " square from fabric **E** and join it on the left side of the assembled unit.



DIAGRAM 5

- Join one (1) 10½" rectangle from fabrics **D** and **E**, then, take one (1) 4½" x 2½" rectangle from fabric **E** and join it on the right side of the assembled unit.

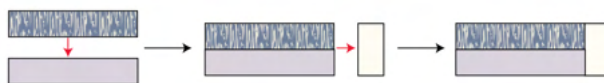


DIAGRAM 6

- Join one (1) 2½" square from fabric **D** with one (1) 16½" x 2½" rectangle from fabric **I**.



DIAGRAM 7

- Join one (1) 14½" x 2½" rectangle from fabric **D** and one (1) 2½" square from fabrics **E** and **I**, following the diagram below.

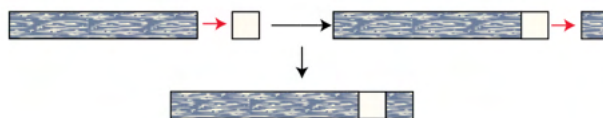


DIAGRAM 8

- Join one (1) $16\frac{1}{2}$ " x $2\frac{1}{2}$ " rectangle from fabric **F** and one (1) $2\frac{1}{2}$ " square from fabric **C**, following the diagram below.

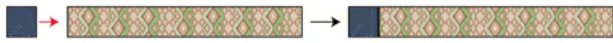


DIAGRAM 11

- Follow steps 1-10 in order to assemble block 3.

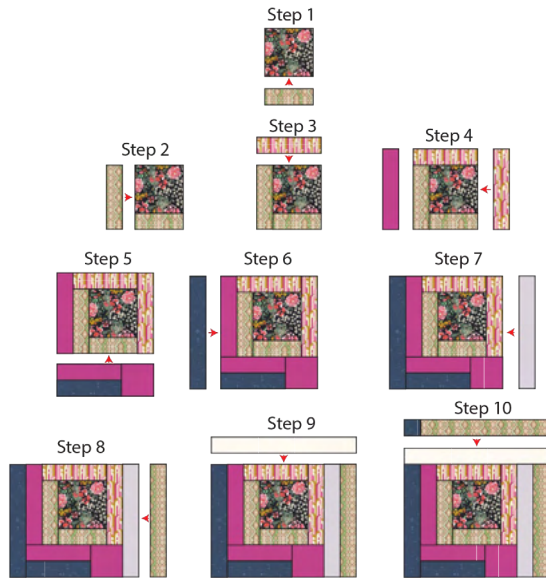
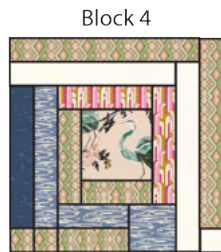


DIAGRAM 12



Block 4

- One (1) $6\frac{1}{2}$ " square from fabric **B**.
- One (1) $12\frac{1}{2}$ " x $2\frac{1}{2}$ " rectangle from fabric **C**.
- One (1) $12\frac{1}{2}$ " x $2\frac{1}{2}$ " rectangle from fabric **D**.
- One (1) $6\frac{1}{2}$ " x $2\frac{1}{2}$ " rectangle from fabric **D**.
- One (1) $4\frac{1}{2}$ " square from fabric **D**.
- One (1) $16\frac{1}{2}$ " x $2\frac{1}{2}$ " rectangle from fabric **E**.
- One (1) $14\frac{1}{2}$ " x $2\frac{1}{2}$ " rectangle from fabric **E**.

- One (1) $2\frac{1}{2}$ " square from fabric **E**.
- Two (2) $16\frac{1}{2}$ " x $2\frac{1}{2}$ " rectangles from fabric **F**.
- One (1) $8\frac{1}{2}$ " x $2\frac{1}{2}$ " rectangle from fabric **F**.
- Two (2) $6\frac{1}{2}$ " x $2\frac{1}{2}$ " rectangles from fabric **F**.
- Two (2) $2\frac{1}{2}$ " squares from fabric **F**.
- One (1) $10\frac{1}{2}$ " x $2\frac{1}{2}$ " rectangle from fabric **J**.
- One (1) $8\frac{1}{2}$ " x $2\frac{1}{2}$ " rectangle from fabric **J**.

- Join one (1) $6\frac{1}{2}$ " x $2\frac{1}{2}$ " rectangle from fabrics **D** and **F**, then, take one (1) $4\frac{1}{2}$ " square from fabric **D** and join it on the right side of the assembled unit.

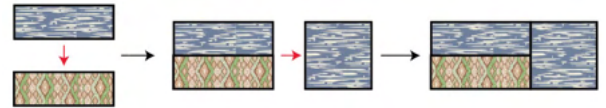


DIAGRAM 13

- Join one (1) $12\frac{1}{2}$ " x $2\frac{1}{2}$ " rectangle from fabric **D** and one (1) $2\frac{1}{2}$ " square from fabric **F**, following the diagram below.

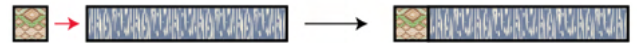


DIAGRAM 14

- Join one (1) $12\frac{1}{2}$ " x $2\frac{1}{2}$ " rectangle from fabric **C** and one (1) $2\frac{1}{2}$ " square from fabric **F**, following the diagram below.



DIAGRAM 15

- Join one (1) $16\frac{1}{2}$ " x $2\frac{1}{2}$ " rectangle from fabric **F** and one (1) $2\frac{1}{2}$ " square from fabric **E**, following the diagram below.



DIAGRAM 16

- Follow steps 1-11 in order to assemble block 4.

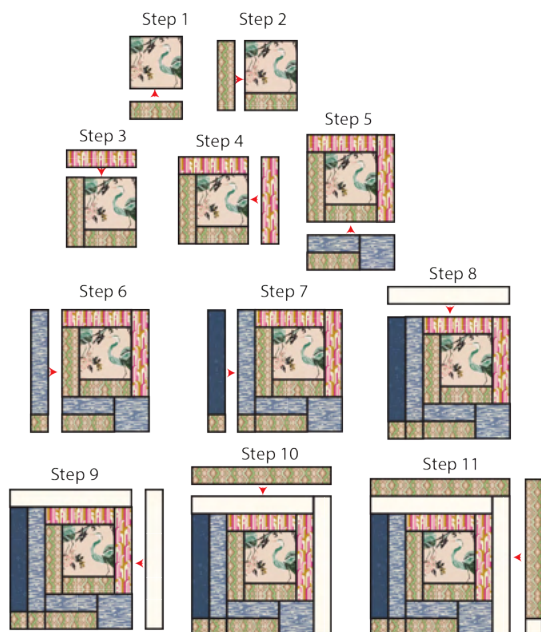
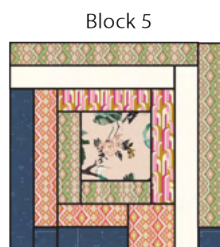


DIAGRAM 17



Block 5

Block 5

- One (1) $6\frac{1}{2}$ " square from fabric **B**.
- One (1) $14\frac{1}{2}$ " x $2\frac{1}{2}$ " rectangle from fabric **C**.
- One (1) $6\frac{1}{2}$ " x $2\frac{1}{2}$ " rectangle from fabric **C**.
- Two (2) $2\frac{1}{2}$ " squares from fabric **C**.
- One (1) $16\frac{1}{2}$ " x $2\frac{1}{2}$ " rectangle from fabric **E**.
- One (1) $14\frac{1}{2}$ " x $2\frac{1}{2}$ " rectangle from fabric **E**.
- Two (2) $16\frac{1}{2}$ " x $2\frac{1}{2}$ " rectangles from fabric **F**.
- One (1) $8\frac{1}{2}$ " x $2\frac{1}{2}$ " rectangle from fabric **F**.
- One (1) $6\frac{1}{2}$ " x $2\frac{1}{2}$ " rectangle from fabric **F**.
- One (1) $12\frac{1}{2}$ " x $2\frac{1}{2}$ " rectangle from fabric **G**.

- One (1) $6\frac{1}{2}$ " x $2\frac{1}{2}$ " rectangle from fabric **G**.
- One (1) $4\frac{1}{2}$ " square from fabric **G**.
- One (1) $10\frac{1}{2}$ " x $2\frac{1}{2}$ " rectangle from fabric **J**.
- One (1) $8\frac{1}{2}$ " x $2\frac{1}{2}$ " rectangle from fabric **J**.

- Join one (1) $6\frac{1}{2}$ " x $2\frac{1}{2}$ " rectangle from fabrics **C** and **G**.
- Then, take one (1) $4\frac{1}{2}$ " square from fabric **G** and join it on the right side of the assembled unit.



DIAGRAM 18

- Join one (1) $12\frac{1}{2}$ " x $2\frac{1}{2}$ " rectangle from fabric **G** and one (1) $2\frac{1}{2}$ " square from fabric **C**, following the diagram below.



DIAGRAM 19

- Join one (1) $16\frac{1}{2}$ " x $2\frac{1}{2}$ " rectangle from fabric **F** and one (1) $2\frac{1}{2}$ " square from fabric **C**, following the diagram below.

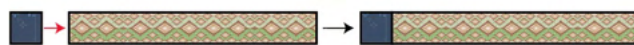


DIAGRAM 20

- Follow steps 1-11 in order to assemble block 5.

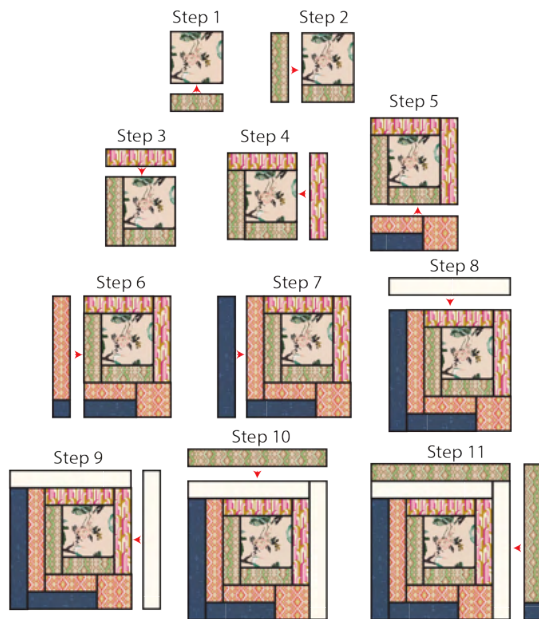
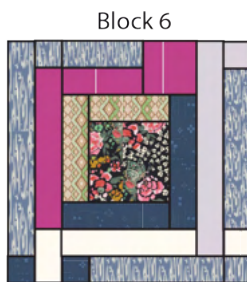


DIAGRAM 21



Block 6

- One (1) $6\frac{1}{2}$ " square from fabric **A**.
- One (1) $10\frac{1}{2}$ " x $2\frac{1}{2}$ " rectangle from fabric **C**.
- One (1) $8\frac{1}{2}$ " x $2\frac{1}{2}$ " rectangle from fabric **C**.
- Two (2) $2\frac{1}{2}$ " squares from fabric **C**.
- One (1) $16\frac{1}{2}$ " x $2\frac{1}{2}$ " rectangle from fabric **D**.
- One (1) $12\frac{1}{2}$ " x $2\frac{1}{2}$ " rectangle from fabric **D**.
- One (1) $10\frac{1}{2}$ " x $2\frac{1}{2}$ " rectangle from fabric **D**.
- One (1) $6\frac{1}{2}$ " x $2\frac{1}{2}$ " rectangle from fabric **D**.
- Two (2) $2\frac{1}{2}$ " squares from fabric **D**.
- One (1) $10\frac{1}{2}$ " x $2\frac{1}{2}$ " rectangle from fabric **E**.

- One (1) $4\frac{1}{2}$ " x $2\frac{1}{2}$ " rectangle from fabric **E**.
- One (1) $2\frac{1}{2}$ " square from fabric **E**.
- One (1) $8\frac{1}{2}$ " x $2\frac{1}{2}$ " rectangle from fabric **F**.
- One (1) $6\frac{1}{2}$ " x $2\frac{1}{2}$ " rectangle from fabric **F**.
- One (1) $12\frac{1}{2}$ " x $2\frac{3}{4}$ " rectangle from fabric **H**.
- One (1) $6\frac{1}{2}$ " x $2\frac{1}{2}$ " rectangle from fabric **H**.
- One (1) $4\frac{1}{2}$ " square from fabric **H**.
- One (1) $16\frac{1}{2}$ " x $2\frac{1}{2}$ " rectangle from fabric **I**.
- One (1) $2\frac{1}{2}$ " square from fabric **I**.
- Join one (1) $6\frac{1}{2}$ " x $2\frac{1}{2}$ " rectangle from fabrics **D** and **H**, then, take one (1) $4\frac{1}{2}$ " square from fabric **H** and join it on the right side of the assembled unit.

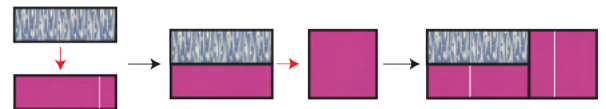


DIAGRAM 22

- Join one (1) $10\frac{1}{2}$ " x $2\frac{1}{2}$ " rectangle from fabric **E** and one (1) $2\frac{1}{2}$ " square from fabric **I**, following the diagram below.



DIAGRAM 23

- Join one (1) $10\frac{1}{2}$ " x $2\frac{1}{2}$ " rectangle from fabric **D** and one (1) $2\frac{1}{2}$ " square from fabric **C**, following the diagram below.



DIAGRAM 24

- Join one (1) $12\frac{1}{2}$ " x $2\frac{1}{2}$ " rectangle from fabric **H**, one (1) $4\frac{1}{2}$ " x $2\frac{1}{2}$ " rectangle from fabric **E**, and one (1) $2\frac{1}{2}$ " square from fabric **C**, following the diagram below.

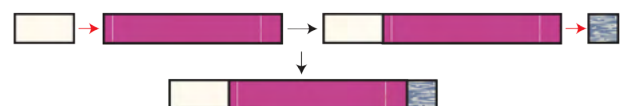


DIAGRAM 25

- Join one (1) $16\frac{1}{2}$ " x $2\frac{1}{2}$ " rectangle from fabric **D** and one (1) $2\frac{1}{2}$ " square from fabric **C**, following the diagram below.



DIAGRAM 26

- Join one (1) $12\frac{1}{2}$ " x $2\frac{1}{2}$ " rectangle from fabric **D**, one (1) $2\frac{1}{2}$ " square from fabrics **D**, **E** and **I** following the diagram below.

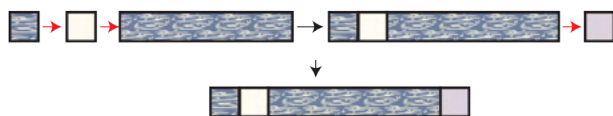


DIAGRAM 27

- Follow steps 1-11 in order to assemble block 6.

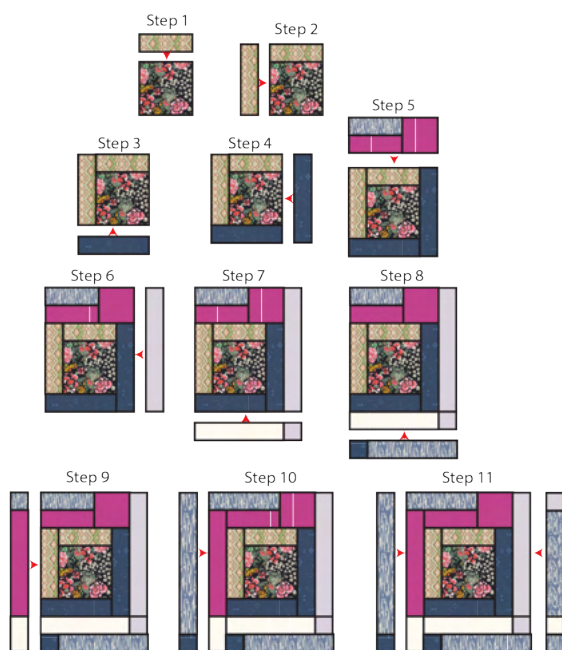
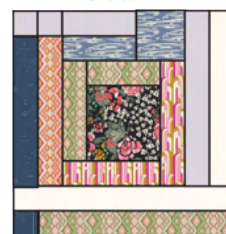


DIAGRAM 28

Block 7



Block 7

- One (1) $6\frac{1}{2}$ " square from fabric **A**.
- One (1) $12\frac{1}{2}$ " x $2\frac{1}{2}$ " rectangle from fabric **C**.
- One (1) $2\frac{1}{2}$ " square from fabric **C**.
- One (1) $6\frac{1}{2}$ " x $2\frac{1}{2}$ " rectangle from fabric **D**.
- One (1) $4\frac{1}{2}$ " square from fabric **D**.
- One (1) $18\frac{1}{2}$ " x $2\frac{1}{2}$ " rectangle from fabric **E**.
- One (1) $14\frac{1}{2}$ " x $2\frac{1}{2}$ " rectangle from fabric **E**.
- One (1) $16\frac{1}{2}$ " x $2\frac{1}{2}$ " rectangle from fabric **F**.
- One (1) $8\frac{1}{2}$ " x $2\frac{1}{2}$ " rectangle from fabric **F**.
- One (1) $6\frac{1}{2}$ " x $2\frac{1}{2}$ " rectangle from fabric **F**.
- One (1) $12\frac{1}{2}$ " x $2\frac{1}{2}$ " rectangle from fabric **G**.
- One (1) $14\frac{1}{2}$ " x $2\frac{1}{2}$ " rectangle from fabric **I**.
- One (1) $6\frac{1}{2}$ " x $2\frac{1}{2}$ " rectangle from fabric **I**.
- Two (2) $2\frac{1}{2}$ " squares from fabric **I**.
- One (1) $10\frac{1}{2}$ " x $2\frac{1}{2}$ " rectangle from fabric **J**.
- One (1) $8\frac{1}{2}$ " x $2\frac{1}{2}$ " rectangle from fabric **J**.

- Join one (1) $6\frac{1}{2}$ " x $2\frac{1}{2}$ " rectangle from fabrics **D** and **I**.
- Then, take one (1) $4\frac{1}{2}$ " square from fabric **D** and join it on the right side of the assembled unit.

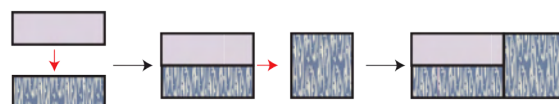


DIAGRAM 29

- Join one (1) $12\frac{1}{2}$ " x $2\frac{1}{2}$ " rectangle from fabric **G** and one (1) $2\frac{1}{2}$ " square from fabric **I**, following the diagram below.



DIAGRAM 30

- Join one (1) $12\frac{1}{2}$ " x $2\frac{1}{2}$ " rectangle from fabric **C** and one (1) $2\frac{1}{2}$ " square from fabric **I**, following the diagram below.



DIAGRAM 31

- Join one (1) $16\frac{1}{2}$ " x $2\frac{1}{2}$ " rectangle from fabric **C** and one (1) $2\frac{1}{2}$ " square from fabric **I**, following the diagram below.



DIAGRAM 32

- Follow steps 1-11 in order to assemble block 7.

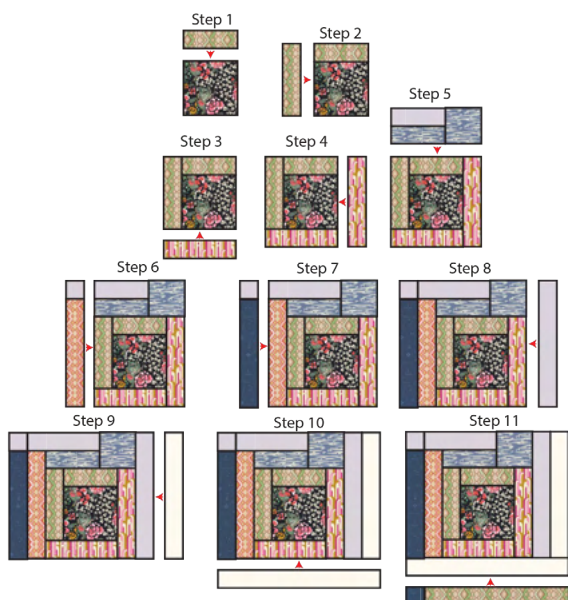


DIAGRAM 33

Block 8



Block 8

- One (1) $6\frac{1}{2}$ " square from fabric **A**.
- One (1) $12\frac{1}{2}$ " x $2\frac{1}{2}$ " rectangle from fabric **C**.
- One (1) $2\frac{1}{2}$ " square from fabric **C**.
- One (1) $6\frac{1}{2}$ " x $2\frac{1}{2}$ " rectangle from fabric **D**.
- One (1) $4\frac{1}{2}$ " square from fabric **D**.
- One (1) $18\frac{1}{2}$ " x $2\frac{1}{2}$ " rectangle from fabric **E**.
- One (1) $14\frac{1}{2}$ " x $2\frac{1}{2}$ " rectangle from fabric **E**.
- One (1) $16\frac{1}{2}$ " x $2\frac{1}{2}$ " rectangle from fabric **F**.
- One (1) $8\frac{1}{2}$ " x $2\frac{1}{2}$ " rectangle from fabric **F**.
- One (1) $6\frac{1}{2}$ " x $2\frac{1}{2}$ " rectangle from fabric **F**.
- One (1) $12\frac{1}{2}$ " x $2\frac{1}{2}$ " rectangle from fabric **G**.
- One (1) $14\frac{1}{2}$ " x $2\frac{1}{2}$ " rectangle from fabric **I**.
- One (1) $6\frac{1}{2}$ " x $2\frac{1}{2}$ " rectangle from fabric **I**.
- Two (2) $2\frac{1}{2}$ " squares from fabric **I**.
- One (1) $10\frac{1}{2}$ " x $2\frac{1}{2}$ " rectangle from fabric **J**.
- One (1) $8\frac{1}{2}$ " x $2\frac{1}{2}$ " rectangle from fabric **J**.
- Join one (1) $8\frac{1}{2}$ " x $2\frac{1}{2}$ " rectangle from fabric **A**, one (1) $6\frac{1}{2}$ " x $2\frac{1}{2}$ " rectangle from fabric **E**, one (1) $4\frac{1}{2}$ " square from fabric **E**, one (1) $2\frac{1}{2}$ " square from fabric **C** and join the pieces following the diagram below.

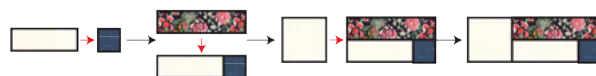


DIAGRAM 34

- Join one (1) $10\frac{1}{2}$ " rectangle from fabrics **A** and **F**, then, take one $4\frac{1}{2}$ " x $2\frac{1}{2}$ " rectangle from fabric **F** and join it on the right side of the assembled unit.



DIAGRAM 35

- Join one (1) $16\frac{1}{2}$ " x $2\frac{1}{2}$ " rectangle from fabric **D** and one (1) $2\frac{1}{2}$ " square from fabric **C**, following the diagram below.

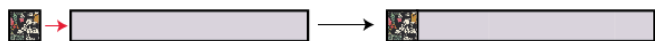


DIAGRAM 36

- Take two (2) $2\frac{1}{2}$ " squares from fabric **A**, one (1) $6\frac{1}{2}$ " x $2\frac{1}{2}$ " rectangle from fabric **A**, one (1) $4\frac{1}{2}$ " x $2\frac{1}{2}$ " rectangle from fabric **C**, one (1) $2\frac{1}{2}$ " square from fabrics **C** and **F** and join each piece following the diagram below.



DIAGRAM 37

- Follow steps 1-10 in order to assemble block 8.

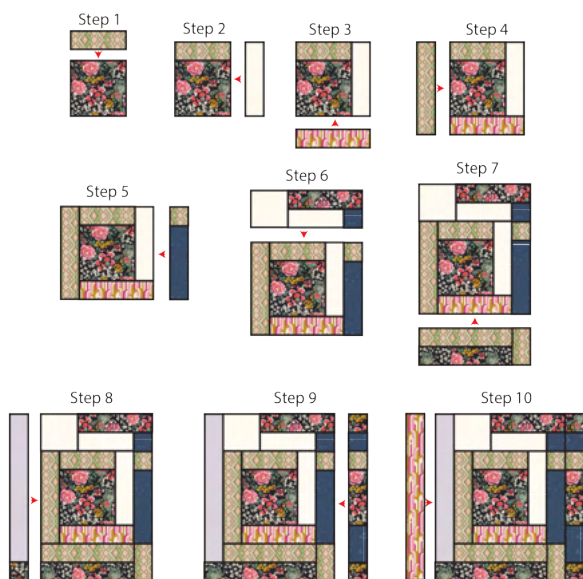


DIAGRAM 38

Block 9



Block 9

- One (1) $6\frac{1}{2}$ " square from fabric **A**.
- One (1) $18\frac{1}{2}$ " x $2\frac{1}{2}$ " rectangle from fabric **A**.
- Two (2) $6\frac{1}{2}$ " x $2\frac{1}{2}$ " rectangles from fabric **A**.
- Three (3) $2\frac{1}{2}$ " squares from fabric **A**.
- One (1) $12\frac{1}{2}$ " x $2\frac{1}{2}$ " rectangle from fabric **C**.
- One (1) $6\frac{1}{2}$ " x $2\frac{1}{2}$ " rectangle from fabric **C**.
- One (1) $4\frac{1}{2}$ " x $2\frac{1}{2}$ " rectangle from fabric **C**.
- One (1) $4\frac{1}{2}$ " square from fabric **C**.
- One (1) $2\frac{1}{2}$ " square from fabric **C**.
- One (1) $12\frac{1}{2}$ " x $2\frac{1}{2}$ " rectangle from fabric **D**.
- One (1) $14\frac{1}{2}$ " x $2\frac{1}{2}$ " rectangle from fabric **E**.
- One (1) $6\frac{1}{2}$ " x $2\frac{1}{2}$ " rectangle from fabric **E**.
- One (1) $4\frac{1}{2}$ " x $2\frac{1}{2}$ " rectangle from fabric **E**.
- One (1) $2\frac{1}{2}$ " square from fabric **E**.
- One (1) $10\frac{1}{2}$ " x $2\frac{1}{2}$ " rectangle from fabric **F**.
- One (1) $8\frac{1}{2}$ " x $2\frac{1}{2}$ " rectangle from fabric **F**.
- One (1) $6\frac{1}{2}$ " x $2\frac{1}{2}$ " rectangle from fabric **F**.
- One (1) $2\frac{1}{2}$ " square from fabric **F**.
- One (1) $6\frac{1}{2}$ " x $2\frac{1}{2}$ " rectangle from fabric **G**.
- One (1) $2\frac{1}{2}$ " square from fabric **G**.
- Join one (1) $8\frac{1}{2}$ " x $2\frac{1}{2}$ " rectangle from fabric **F** and one (1) $2\frac{1}{2}$ " square from fabric **C**, following the diagram below.



DIAGRAM 39

- Join one (1) 6½" x 2½" rectangle from fabrics **A** and **C**.
- Then, take one (1) 4½" square from fabric **C** and join it on the left side of the assembled unit.



DIAGRAM 40

- Join one (1) 12½" x 2½" rectangle from fabric **C** and one (1) 2½" square from fabric **A**, following the diagram below.

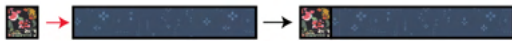


DIAGRAM 41

- Take one (1) 6½" x 2½" rectangle from fabrics **A** and **E**, one (1) 2½" square from fabrics **E** and **G**, one (1) 4½" x 2½" rectangle from fabrics **C** and **E** and join each piece following the diagram below.



DIAGRAM 42

- Take one (1) 14½" x 2½" rectangle from fabric **C** and two (2) 2½" squares from fabric **A** and join the pieces following the diagram below.



DIAGRAM 43

- Take one (1) 12½" x 2½" rectangle from fabric **D**, one (1) 4½" x 2½" rectangle from fabric **C** and one (1) 2½" square from fabric **F** and join the pieces following the diagram below.

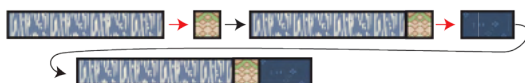


DIAGRAM 44

- Follow steps 1-10 in order to assemble block 9.

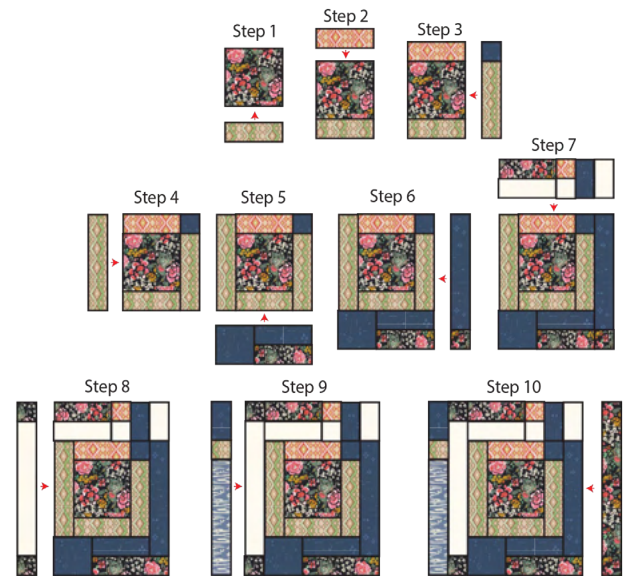
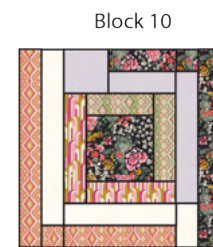


DIAGRAM 45

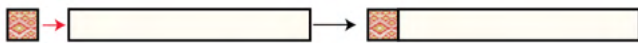


Block 10

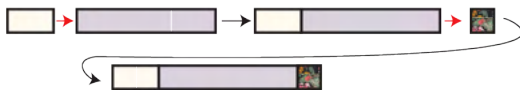
- One (1) $6\frac{1}{2}$ " square from fabric **A**.
- One (1) $18\frac{1}{2}$ " x $2\frac{1}{2}$ " rectangle from fabric **A**.
- One (1) $6\frac{1}{2}$ " x $2\frac{1}{2}$ " rectangle from fabric **A**.
- One (1) $2\frac{1}{2}$ " square from fabric **A**.
- One (1) $16\frac{1}{2}$ " x $2\frac{1}{2}$ " rectangle from fabric **E**.
- One (1) $10\frac{1}{2}$ " x $2\frac{1}{2}$ " rectangle from fabric **E**.
- One (1) $4\frac{1}{2}$ " x $2\frac{1}{2}$ " rectangle from fabric **E**.
- One (1) $8\frac{1}{2}$ " x $2\frac{1}{2}$ " rectangle from fabric **F**.
- One (1) $6\frac{1}{2}$ " x $2\frac{1}{2}$ " rectangle from fabric **F**.
- One (1) $18\frac{1}{2}$ " x $2\frac{1}{2}$ " rectangle from fabric **G**.
- One (1) $10\frac{1}{2}$ " x $2\frac{1}{2}$ " rectangle from fabric **G**.
- One (1) $2\frac{1}{2}$ " square from fabric **G**.
- One (1) $12\frac{3}{4}$ " x $2\frac{1}{2}$ " rectangle from fabric **I**.
- One (1) $6\frac{1}{2}$ " x $2\frac{1}{2}$ " rectangle from fabric **I**.
- One (1) $4\frac{1}{2}$ " square from fabric **I**.

-
- The diagram illustrates the process of inserting a new element into a list. It starts with a list containing one element (a red flower). A new element (a blue flower) is added to the end of the list. The resulting list now contains two elements: the red flower and the blue flower.

- Join one (1) 16½" x 2½" rectangle from fabric **E** and one (1) 2½" square from fabric **G**, following the diagram below



- Take one (1) 12½" x 2½" rectangle from fabric **I**, one (1) 4½" x 2½" rectangle from fabric **E**, one (1) 2½" square from fabric **A** and join the pieces following the diagram below.



- Follow steps 1-10 in order to assemble block 10.



Block 11



- One (1) $6\frac{1}{2}$ " square from fabric **A**.
- One (1) $12\frac{1}{2}$ " x $2\frac{1}{2}$ " rectangle from fabric **A**.
- One (1) $2\frac{1}{2}$ " square from fabric **A**.
- One (1) $18\frac{1}{2}$ " x $2\frac{1}{2}$ " rectangle from fabric **C**.
- One (1) $16\frac{1}{2}$ " x $2\frac{1}{2}$ " rectangle from fabric **C**.
- One (1) $10\frac{1}{2}$ " x $2\frac{1}{2}$ " rectangle from fabric **C**.
- One (1) $8\frac{1}{2}$ " x $2\frac{1}{2}$ " rectangle from fabric **C**.
- One (1) $12\frac{1}{2}$ " x $2\frac{1}{2}$ " rectangle from fabric **D**.
- One (1) $8\frac{1}{2}$ " x $2\frac{1}{2}$ " rectangle from fabric **D**.
- One (1) $8\frac{1}{2}$ " x $2\frac{1}{2}$ " rectangle from fabric **F**.
- One (1) $6\frac{1}{2}$ " x $2\frac{1}{2}$ " rectangle from fabric **F**.
- One (1) $16\frac{1}{2}$ " x $2\frac{1}{2}$ " rectangle from fabric **I**.
- One (1) $10\frac{1}{2}$ " x $2\frac{1}{2}$ " rectangle from fabric **I**.
- One (1) $6\frac{1}{2}$ " x $2\frac{1}{2}$ " rectangle from fabric **J**.
- One (1) 4 " x $2\frac{1}{2}$ " rectangle from fabric **J**.
- One (1) $4\frac{1}{2}$ " square from fabric **J**.
- Join one (1) $6\frac{1}{2}$ " x $2\frac{1}{2}$ " rectangle from fabric **J** with one (1) $2\frac{1}{2}$ " square from fabric **A**.
- Now, join one (1) $8\frac{1}{2}$ " x $2\frac{1}{2}$ " rectangle from fabric **D**. Then, join one (1) $4\frac{1}{2}$ " square from fabric **J** following the diagram below.

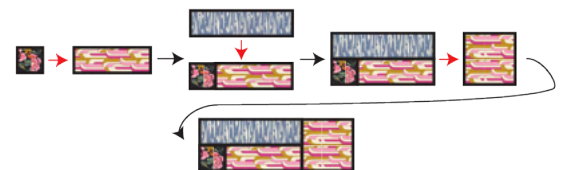


DIAGRAM 50

- Join one (1) $12\frac{1}{2}$ " x $2\frac{1}{2}$ " rectangle from fabric **D** and one (1) $4\frac{1}{2}$ " x $2\frac{1}{2}$ " rectangle from fabric **J**, following the diagram below.



DIAGRAM 51

- Follow steps 1-10 in order to assemble block 11.

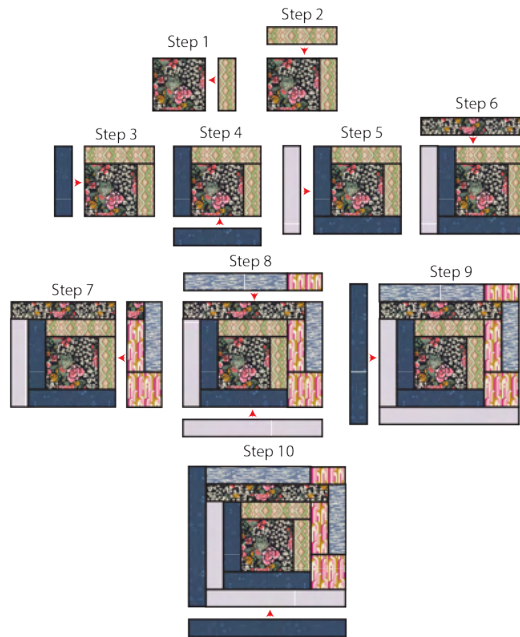


DIAGRAM 52

Block 12



Block 12

- One (1) $6\frac{1}{2}$ " square from fabric **A**.
- One (1) $14\frac{1}{2}$ " x $2\frac{1}{2}$ " rectangle from fabric **C**.
- One (1) $6\frac{1}{2}$ " x $2\frac{1}{2}$ " rectangle from fabric **C**.
- Two (2) $2\frac{1}{2}$ " squares from fabric **C**.
- One (1) $18\frac{1}{2}$ " x $2\frac{1}{2}$ " rectangle from fabric **E**.
- One (1) $16\frac{1}{2}$ " x $2\frac{1}{2}$ " rectangle from fabric **F**.
- One (1) $14\frac{1}{2}$ " x $2\frac{1}{2}$ " rectangle from fabric **F**.

- One (1) $8\frac{1}{2}$ " x $2\frac{1}{2}$ " rectangle from fabric **F**.
- One (1) $6\frac{1}{2}$ " x $2\frac{1}{2}$ " rectangle from fabric **F**.
- One (1) $12\frac{1}{2}$ " x $2\frac{1}{2}$ " rectangle from fabric **G**.
- One (1) $6\frac{1}{2}$ " x $2\frac{1}{2}$ " rectangle from fabric **G**.
- One (1) $4\frac{1}{2}$ " square from fabric **G**.
- One (1) $14\frac{1}{2}$ " x $2\frac{1}{2}$ " rectangle from fabric **I**.
- One (1) $10\frac{1}{2}$ " x $2\frac{1}{2}$ " rectangle from fabric **J**.
- One (1) $8\frac{1}{2}$ " x $2\frac{1}{2}$ " rectangle from fabric **J**.
- Join one (1) $6\frac{1}{2}$ " x $2\frac{1}{2}$ " rectangle from fabrics **C** and **G**, then, take one (1) $4\frac{3}{4}$ " square from fabric **G** and join it on the left side of the assembled unit.



DIAGRAM 53

- Join one (1) $12\frac{1}{2}$ " x $2\frac{1}{2}$ " rectangle from fabric **G** and one (1) $2\frac{1}{2}$ " square from fabric **C**, following the diagram below.



DIAGRAM 54

- Join one (1) $16\frac{1}{2}$ " x 2" rectangle from fabric **F** and one (1) $2\frac{1}{2}$ " square from fabric **C**, following the diagram below.

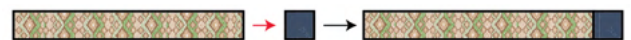


DIAGRAM 55

- Follow steps 1-10 in order to assemble block 12 log cabin.

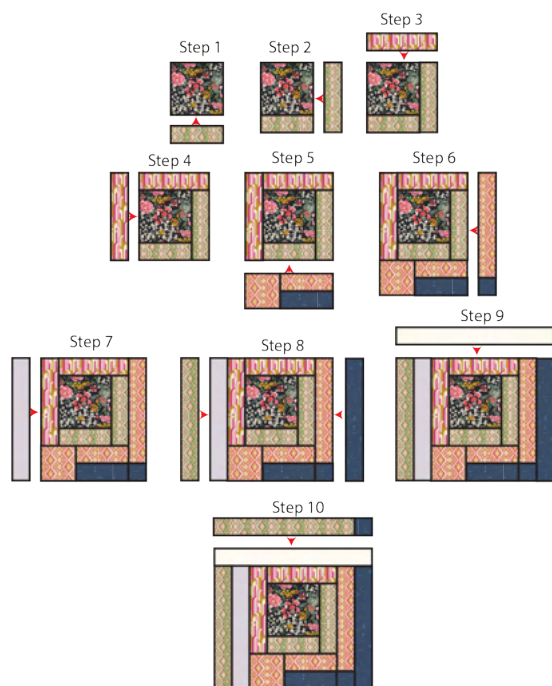


DIAGRAM 56



Block 13

- One (1) $6\frac{1}{2}$ " square from fabric **A**.
- One (1) $10\frac{1}{2}$ " x $2\frac{1}{2}$ " rectangle from fabric **C**.
- One (1) $8\frac{1}{2}$ " x $2\frac{1}{2}$ " rectangle from fabric **C**.
- One (1) $2\frac{1}{2}$ " square from fabric **C**.
- One (1) $18\frac{1}{2}$ " x $2\frac{1}{2}$ " rectangle from fabric **D**.
- One (1) $16\frac{1}{2}$ " x $2\frac{1}{2}$ " rectangle from fabric **D**.
- One (1) $8\frac{1}{2}$ " x $2\frac{1}{2}$ " rectangle from fabric **D**.
- One (1) $6\frac{1}{2}$ " x $2\frac{1}{2}$ " rectangle from fabric **D**.
- One (1) $2\frac{1}{2}$ " square from fabric **D**.
- One (1) $14\frac{1}{2}$ " x $2\frac{1}{2}$ " rectangle from fabric **E**.

- One (1) $10\frac{1}{2}$ " x $2\frac{1}{2}$ " rectangle from fabric **E**.
- One (1) $4\frac{1}{2}$ " x $2\frac{1}{2}$ " rectangle from fabric **E**.
- One (1) $2\frac{1}{2}$ " square from fabric **E**.
- One (1) $8\frac{1}{2}$ " x $2\frac{1}{2}$ " rectangle from fabric **F**.
- One (1) $6\frac{1}{2}$ " x $2\frac{1}{2}$ " rectangle from fabric **F**.
- One (1) $16\frac{1}{2}$ " x $2\frac{1}{2}$ " rectangle from fabric **I**.
- One (1) $6\frac{1}{2}$ " x $2\frac{1}{2}$ " rectangle from fabric **J**.
- One (1) $4\frac{1}{2}$ " square from fabric **J**.
- Join one (1) $6\frac{1}{2}$ " x $2\frac{1}{2}$ " rectangle from fabrics **D** and **J**.
- Then, take one (1) $4\frac{1}{2}$ " square from fabric **J** and join it on the left side of the assembled unit.

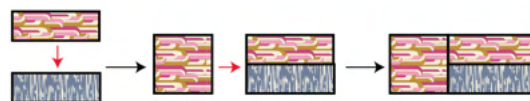


DIAGRAM 57

- Join one (1) $14\frac{1}{2}$ " x $2\frac{1}{2}$ " rectangle from fabric **E** and one (1) $2\frac{1}{2}$ " square from fabric **D**, following the diagram below.



DIAGRAM 58

- Join one (1) $2\frac{1}{2}$ " square from fabrics **C** and **E**.
- Now, join one (1) $8\frac{1}{2}$ " x $2\frac{1}{2}$ " rectangle from fabric **D** on the right side of the pieces.
- Then, take one (1) $4\frac{1}{2}$ " x $2\frac{1}{2}$ " rectangle from fabric **E** and join it on the right side of the assembled piece, following the diagram below.



DIAGRAM 59

- Follow steps 1-10 in order to assemble block 13.

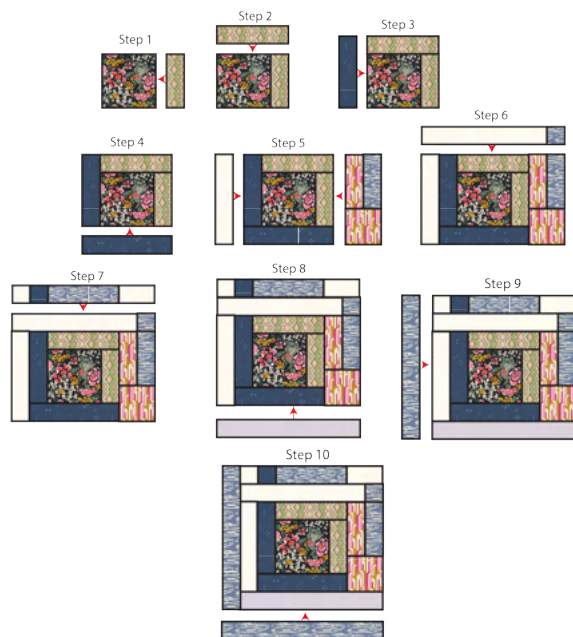
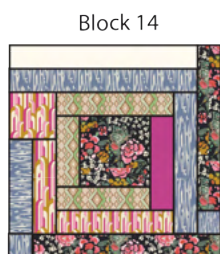


DIAGRAM 60



Block 14

- One (1) $6\frac{1}{2}$ " x $2\frac{1}{2}$ " rectangle from fabric **A**.
- One (1) $16\frac{1}{2}$ " x $2\frac{1}{2}$ " rectangle from fabric **A**.
- One (1) $14\frac{1}{2}$ " x $2\frac{1}{2}$ " rectangle from fabric **A**.
- One (1) $16\frac{1}{2}$ " x $2\frac{1}{2}$ " rectangle from fabric **D**.
- One (1) $12\frac{1}{2}$ " x $2\frac{1}{2}$ " rectangle from fabric **D**.
- One (1) $8\frac{1}{2}$ " x $2\frac{1}{2}$ " rectangle from fabric **D**.
- Two (2) $2\frac{1}{2}$ " squares from fabric **D**.
- One (1) $16\frac{1}{2}$ " x $2\frac{1}{2}$ " rectangle from fabric **E**.
- One (1) $10\frac{1}{2}$ " x $2\frac{1}{2}$ " rectangle from fabric **F**.
- One (1) $8\frac{1}{2}$ " x $2\frac{1}{2}$ " rectangle from fabric **F**.
- One (1) $6\frac{1}{2}$ " x $2\frac{1}{2}$ " rectangle from fabric **F**.

- One (1) $8\frac{1}{2}$ " x $2\frac{1}{2}$ " rectangle from fabric **H**.
- One (1) $10\frac{1}{2}$ " x $2\frac{1}{2}$ " rectangle from fabric **J**.
- One (1) $8\frac{1}{2}$ " x $2\frac{1}{2}$ " rectangle from fabric **J**.
- One (1) $4\frac{1}{2}$ " square from fabric **J**.

- Join one (1) $8\frac{1}{2}$ " x $2\frac{1}{2}$ " rectangle from fabrics **D** and **J**.
- Then, take one (1) $4\frac{1}{2}$ " square from fabric **J** and join it on the left side of the assembled unit.



DIAGRAM 61

- Join one (1) $14\frac{1}{2}$ " x $2\frac{1}{2}$ " rectangle from fabric **A** and one (1) $2\frac{1}{2}$ " square from fabric **D**, following the diagram below.



DIAGRAM 62

- Join one (1) $16\frac{1}{2}$ " x $2\frac{1}{2}$ " rectangle from fabric **A** and one (1) $2\frac{1}{2}$ " square from fabric **D**, following the diagram below.



DIAGRAM 63

- Follow steps 1-10 in order to assemble block 14.

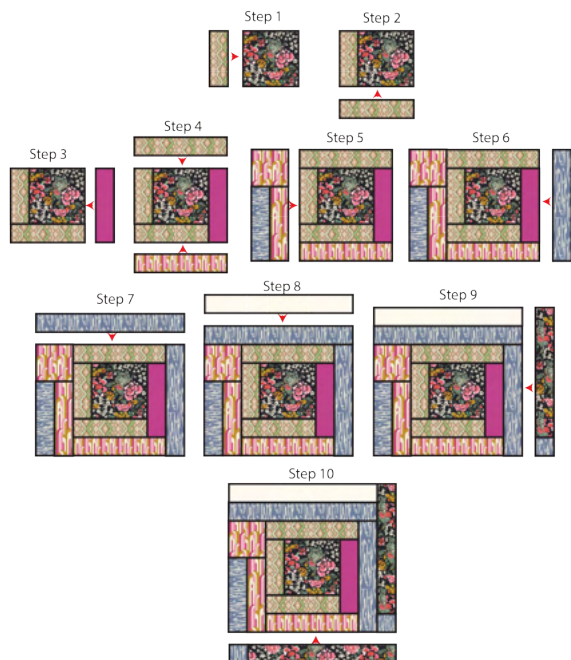
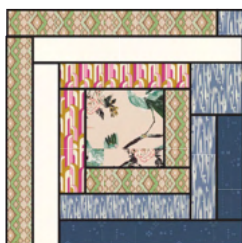


DIAGRAM 64

Block 15



Block 15

- One (1) $6\frac{1}{2}$ " square from fabric **B**.
- One (1) $14\frac{1}{2}$ " x $2\frac{1}{2}$ " rectangle from fabric **C**.
- One (1) $8\frac{1}{2}$ " x $2\frac{1}{2}$ " rectangle from fabric **C**.
- One (1) $10\frac{1}{2}$ " x $2\frac{1}{2}$ " rectangle from fabric **D**.
- One (1) $8\frac{1}{2}$ " x $2\frac{1}{2}$ " rectangle from fabric **D**.
- One (1) $4\frac{1}{2}$ " square from fabric **D**.
- One (1) $2\frac{1}{2}$ " square from fabric **D**.
- One (1) $16\frac{1}{2}$ " x $2\frac{1}{2}$ " rectangle from fabric **E**.
- One (1) $14\frac{1}{2}$ " x $2\frac{1}{2}$ " rectangle from fabric **E**.
- Two (2) $16\frac{1}{2}$ " x $2\frac{1}{2}$ " rectangles from fabric **F**.
- One (1) $8\frac{1}{2}$ " x $2\frac{1}{2}$ " rectangle from fabric **F**.
- One (1) $6\frac{1}{2}$ " x $2\frac{1}{2}$ " rectangle from fabric **F**.

- One (1) $10\frac{1}{2}$ " x $2\frac{1}{2}$ " rectangle from fabric **J**.
- One (1) $8\frac{1}{2}$ " x $2\frac{1}{2}$ " rectangle from fabric **J**.
- Join one (1) $8\frac{1}{2}$ " x $2\frac{1}{2}$ " rectangle from fabrics **C** and **D**.
- Then, take one (1) $4\frac{1}{2}$ " square from fabric **D** and join it on the left side of the assembled unit.

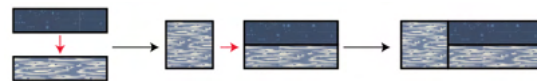


DIAGRAM 65

- Join one (1) $16\frac{1}{2}$ " x $2\frac{1}{2}$ " rectangle from fabric **F** and one (1) $2\frac{1}{2}$ " square from fabric **D**, following the diagram below.



DIAGRAM 66

- Follow steps 1-11 in order to assemble block 15.

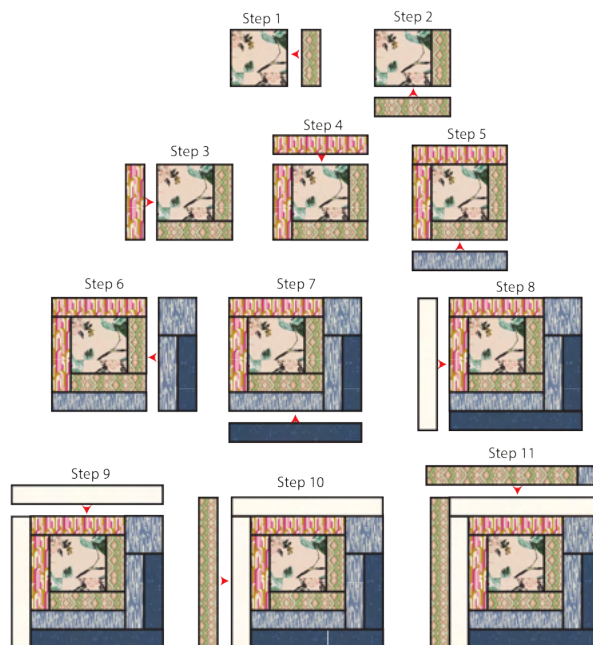


DIAGRAM 67

- Sew blocks together by rows following the diagram below.

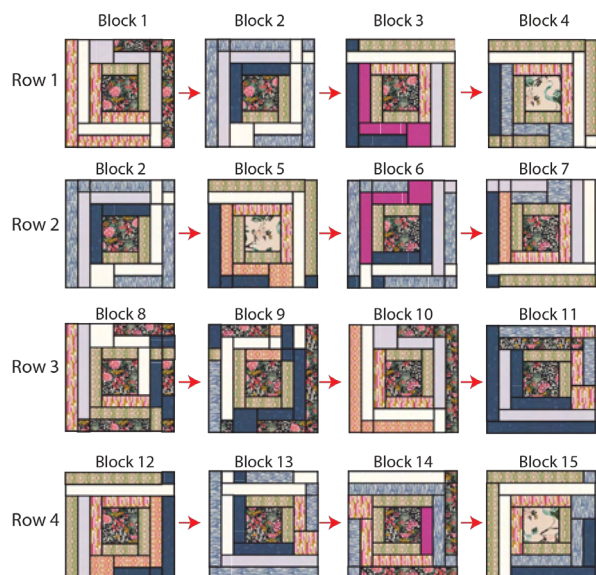


DIAGRAM 68

- Then, sew rows 1-4.

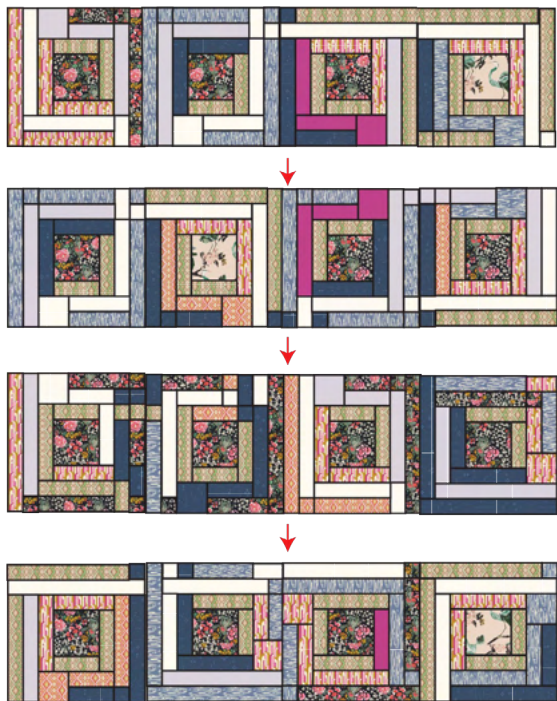


DIAGRAM 69

QUILT ASSEMBLY

Sew rights sides together.

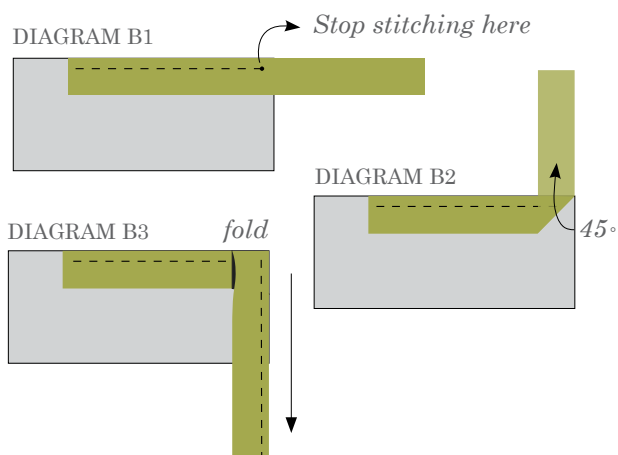
- Place BACKING FABRIC on a large surface wrong side up. Stretch it with masking tape against that surface.
- Place BATTING on top of backing fabric.
- Place TOP on top of the batting with right side facing up. Smooth away wrinkles using your hands.
- Pin all layers together and baste with basting thread, using long stitches. You can also use safety pins to join the layers.
- Machine or hand quilt starting at the center and working towards the corners. Remember that quilting motifs are a matter of personal preference. Have fun choosing yours!
- After you finished, trim excess of any fabric or batting, squaring the quilt to proceed to bind it.

BINDING

Sew rights sides together.

- Cut enough strips $1\frac{1}{2}$ " wide by the width of the fabric **K** to make a final strip 298" long. Start sewing the binding strip in the middle of one of the sides of the quilt, placing the strip right side down and leaving an approximated 5" tail. Sew with $\frac{1}{4}$ " seam allowance (using straight stitch), aligning the strip's raw edge with the quilt top's raw edge.
- Stop stitching $\frac{1}{4}$ " before the edge of the quilt (DIAGRAM B 1). Clip the threads. Remove the quilt from under the machine presser foot. Fold the strip in a motion of 45° and upward, pressing with your fingers (DIAGRAM B2). Hold this fold with your finger, bring the strip down in line with the next edge, making a horizontal fold that aligns with the top edge of the quilt (DIAGRAM B3). Start sewing at $\frac{1}{4}$ " of the border, stitching all the layers. Do the same in the four corners of the quilt.

- Stop stitching before you reach the last 5 or 6 inches. Cut the threads and remove the quilt from under the machine presser foot. Lay the loose ends of the binding flat along the quilt edge, folding the ends back on themselves where they meet. Press them together to form a crease. Using this crease as the stitching line, sew the two open ends of the binding with right sides together (you can help yourself marking with a pencil if the crease is difficult to see).
- Trim seam to $\frac{1}{4}$ " and press open. Complete the sewing. Turn binding to back of the quilt, turn raw edge inside and stitch by hand using blind stitch.



XXXXXXXXXXXXXXXXXXXXXXXXXXXXXXXXXXXX

Congratulations
& enjoy

XXXXXXXXXXXXXXXXXXXXXXXXXXXXXXXXXXXX



artgalleryfabrics.com

NOTE: While all possible care has been taken to ensure the accuracy of this pattern, We are not responsible for printing errors or the way in which individual work varies.

Please read instructions carefully before starting the construction of this quilt. If desired, wash and iron your fabrics before starting to cut.

© 2021 Courtesy of Art Gallery Quilts LLC. All Rights Reserved.