

# Summery PILLOW\*



FREE PATTERN

XXXXXXXXXXXXXXXXXXXXXXXXXXXXXXXX





# Summery **PILLOW**

DESIGNED BY AGF STUDIO



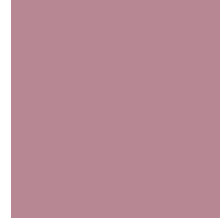
PE-515  
OLIVE OIL



PE-511  
DRAGON FRUIT



PE-517  
EVERGREEN



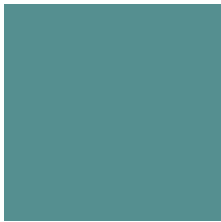
PE-510  
SWEET FIG



PE-514  
SUMMER SUN



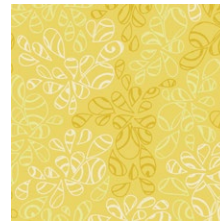
PE-516  
GARDEN FERN



PE-518  
SWIMMING POOL



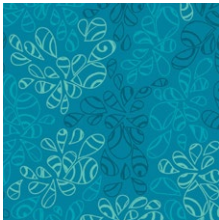
PE-513  
GINGERBREAD



NE-105  
MIMOSA



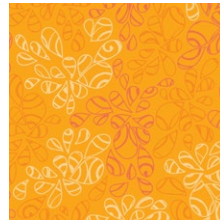
NE-111  
HOT PINK



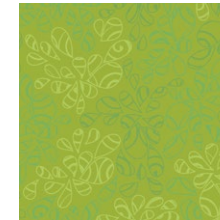
NE-123  
SEAWATER



NE-110  
ORCHID BLOOM



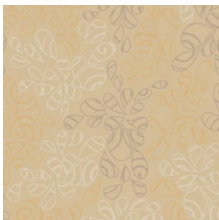
NE-119  
SWEET MANGO



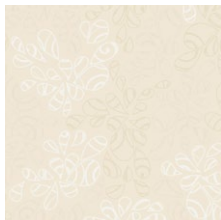
NE-112  
GREEN TEA



NE-113  
BLUE GREEN



NE-115  
BISCOTTI



NE-104  
NATURAL



# Summery PILLOW\*

FINISHED SIZE | 20" x 20"

## FABRIC REQUIREMENTS

Fabric <b>A</b>	PE-515	F8.
Fabric <b>B</b>	PE-511	F8.
Fabric <b>C</b>	PE-517	F8.
Fabric <b>D</b>	PE-510	F8.
Fabric <b>E</b>	PE-514	F8.
Fabric <b>F</b>	PE-516	F8.
Fabric <b>G</b>	PE-518	F8.
Fabric <b>H</b>	PE-513	F8.
Fabric <b>I</b>	NE-105	F8.
Fabric <b>J</b>	NE-111	F8.
Fabric <b>K</b>	NE-123	F8.
Fabric <b>L</b>	NE-110	F8.
Fabric <b>M</b>	NE-119	F8.
Fabric <b>N</b>	NE-112	F8.
Fabric <b>O</b>	NE-118	F8.
Fabric <b>P</b>	NE-115	F8.
Fabric <b>Q</b>	NE-104	¾ yd.

### BACKING FABRIC

Fabric **Q** NE-104 1½ yds. *(Suggested)*

## CUTTING DIRECTIONS

- Two (2) 4½" x 2" rectangle from fabrics **A, B, C, D, E, F, G, H.**
- One (1) 10" x 2" rectangle from fabrics **A, B, C, D, E, F, G, H.**
- Four (4) 4½" squares from fabrics **I, J, K, L, M, N, O, P.**
- Thirty two (32) 3⅜" squares from fabric **Q.**
- Two (2) 20½" x 12" rectangles from fabric **Q.** (backing)

## CONSTRUCTION

- You will need four (4) 4½" squares from fabric **I**, two (2) 4½" x 2" strips from fabric **A**, one (1) 10" x 2" strip from fabric **A**, and four (4) 3⅜" squares from fabric **Q.**
- Take four (4) 4½" squares from fabric **I**, two (2) 4½" x 2" strips from fabric **A**, and join them into two fabric strips: **IAI**

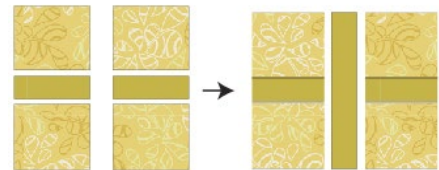


DIAGRAM 1

- Take one (1) 10" x 2" strip from fabric **A** and join it in the center of the two strips.
- Make a template of a 6¼" square. Place it on top of the assembled piece on point making sure it is perfectly centered and aligned with the fabrics, and trim it, following the diagram below..

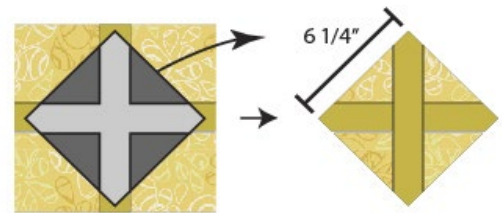
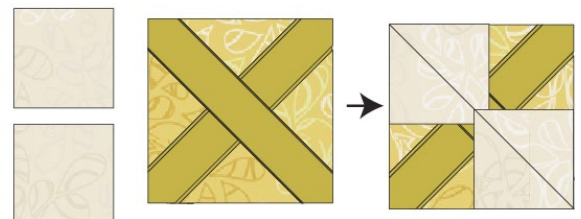


DIAGRAM 2

- Take two (2) 3⅜" squares from fabric **Q** and place them on the diagonal aligned to the corners. Pin them in place, and draw a line from point to point.
- Stitch at ¼" from the drawn line on each side. Cut on the drawn line.
- Open and press.



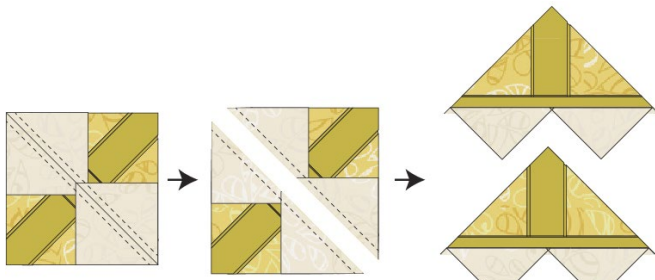


DIAGRAM 3

- Take two (2)  $3\frac{3}{8}$ " x  $3\frac{3}{8}$ " squares from fabric Q and place them on the diagonal aligned to the corner of fabric I.
- Pin them in place, and draw a line on the diagonal of fabric Q.
- Stitch at  $\frac{1}{4}$ " from the drawn line on each side. Cut on the drawn line. Open and press.
- Each piece should measure  $5\frac{1}{2}$ " x 3".

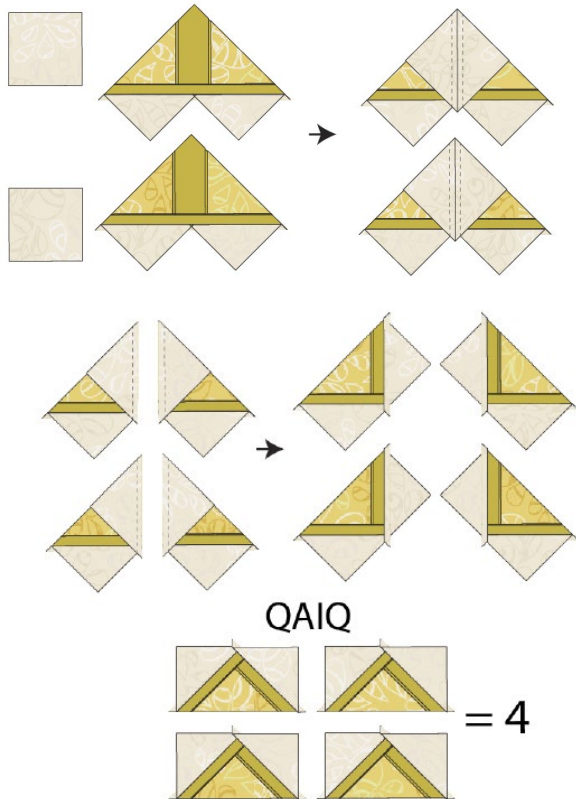


DIAGRAM 4

- Repeat the same instructions for the following fabrics combinations:

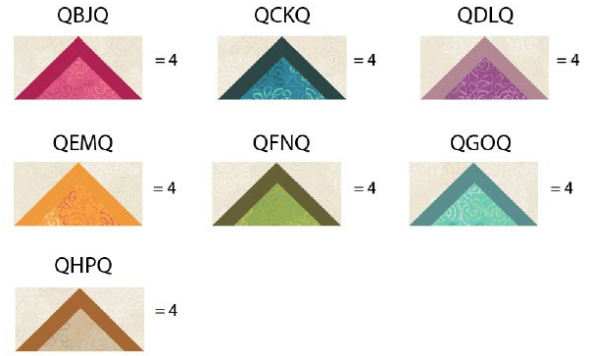


DIAGRAM 5

- Assemble each piece by rows following the diagram below.

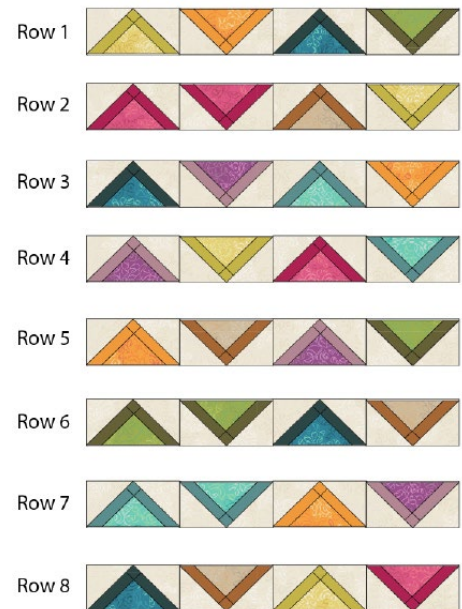


DIAGRAM 6

- Join Rows 1-8.
- Quilt as desired.



DIAGRAM 7



# BACK OF PILLOW

- Take both 20½" x 12" rectangles from fabric Q.
- Fold one bottom edge ½" towards the wrong side of the fabric of one of the rectangle.
- Fold the same edge ½" again and edge stitch the fold in place to have a clean edge.
- Repeat the same for the top edge of the bottom piece.
- Take the quilted pillow top and lay it flat right side up.
- Take one rectangle from fabric Q and align it wrong side up to the right side of the pillow top.
- Take the other rectangle from fabric Q and align it wrong side up to the left side of the pillow top.
- Pin the three pieces in place and sew around the edges at ¼".
- Clip the corners and flip the piece to the right side of the fabric.
- Fill the pillow with a 20" x 20" pillow form and enjoy!





XXXXXXXXXXXXXXXXXXXXXXXXXXXX

# Congratulations & enjoy

XXXXXXXXXXXXXXXXXXXXXXXXXXXX



[artgalleryfabrics.com](https://artgalleryfabrics.com)

NOTE: While all possible care has been taken to ensure the accuracy of this pattern, We are not responsible for printing errors or the way in which individual work varies.

Please read instructions carefully before starting the construction of this quilt. If desired, wash and iron your fabrics before starting to cut.