

# Lush Jungle





# Lush Jungle

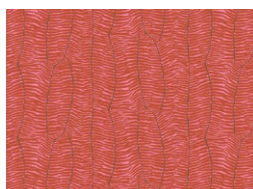
QUILT DESIGNED BY AGFstudio

## Boscage

FABRICS DESIGNED BY KATARINA ROCELLA



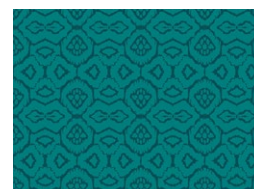
BSC-39900  
LUSH RAINFOREST



BSC-39901  
SHIFTING FRONDS



BSC-39902  
BLOOMING EUCALYPTUS



BSC-39903  
TROPICAL TAPESTRY



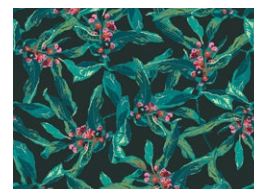
BSC-39904  
BORNEO IMPRINT



BSC-39905  
PARROT GRASSLAND



BSC-39906  
FERAL ESSENCE NUDE



BSC-39907  
JUNGLE BERRIES



BSC-39908  
WANDERING LEOPARDS  
RUBY



BSC-39909  
CEREMONIAL KAIN



BSC-39910  
WOVEN HERD



BSC-39911  
PUA NIGHTFALL



FEEL THE DIFFERENCE © 2021 Courtesy of Art Gallery Quilts LLC. All Rights Reserved.





FINISHED SIZE | 60" x 80"

## FABRIC REQUIREMENTS

Fabric <b>A</b>	BSC-39910	2 yd.
Fabric <b>B</b>	BSC-39909	2 yd.
Fabric <b>C</b>	PE-456	2½ yd.
Fabric <b>D</b>	BSC-39903	¾ yd.
Fabric <b>E</b>	BSC-39911	¾ yd.
Fabric <b>F</b>	BSC-39908	¼ yd.
Fabric <b>G</b>	BSC-39904	¼ yd.
Fabric <b>H</b>	BSC-39905	¼ yd.
Fabric <b>I</b>	BSC-39902	¼ yd.
Fabric <b>J</b>	BSC-39907	¼ yd.
Fabric <b>K</b>	BSC-39906	¼ yd.
Fabric <b>L</b>	BSC-39900	¼ yd.
Fabric <b>M</b>	BSC-39901	1½ yd.

### BACKING FABRIC

BSC-39905 4 ½ yds (*Suggested*)

### BINDING FABRIC

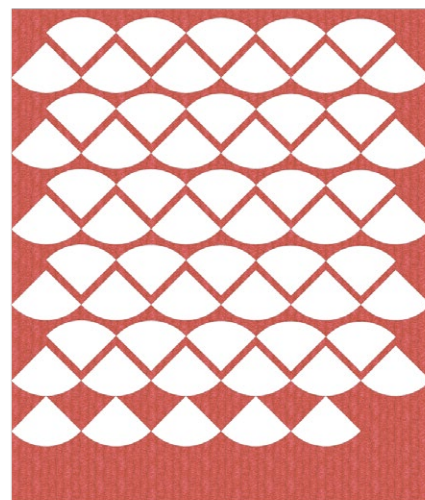
Fabric **C** PE-456 (*Included*)

## CUTTING DIRECTIONS

*¼" seam allowances are included.  
WOF means width of fabric.*

- Ninety-six (96) 5½" x 3" rectangles from fabric **A**.
- Ninety-Six (96) 3" squares from fabric **A**.
- Ninety-six (96) 5½" x 3" rectangles from fabric **B**.

- Ninety-six (96) 3" squares from fabric **B**.
- Ninety-six (96) template **b** from fabric **C**.
- Eight (8) 3" x WOF strips from fabric **D**.
- Eight (8) 3" x WOF strips from fabric **E**.
- Three (3) fussy cut & on point 5" squares from fabric **F**.
- Two (2) fussy cut & on point 5" squares from fabric **G**.
- Two (2) fussy cut & on point 5" squares from fabric **H**.
- Two (2) on point 5" squares from fabric **I**.
- Two (2) on point 5" squares from fabric **J**.
- Two (2) on point 5" squares from fabric **K**.
- Two (2) fussy cut & on point 5" squares from fabric **L**.
- Sixty (60) template **a** from fabric **M**.



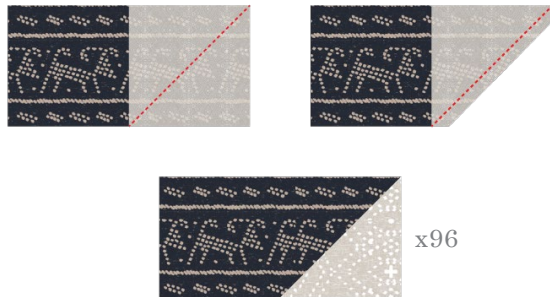
## CONSTRUCTION

*Sew all rights sides together with ¼" seam allowance.*

- Take ninety-six (96) 5½" x 3" rectangles from fabric **A** and ninety-six (96) 3" squares from fabric **B**.
- Place one 3" square from fabric **B** aligned to the left of the 5½" x 3" rectangle from fabric **A** right sides of the fabrics together and sew accross the square from the bottom left corner to the top right corner.
- Trim excess fabric and press open.



- Repeat the same procedure with all the remaining rectangles to end up with ninety-six (96) **AB** rectangles.
- Set aside.



- Take ninety-six (96)  $5\frac{1}{2}$ " x 3" rectangles from fabric **B** and ninety-six (96) 3" squares from fabric **A**.
- 
- Place one 3" square from fabric **A** aligned to the left corner of the  $5\frac{1}{2}$ " x 3" rectangle from fabric **B** right sides of the fabrics together and sew across the square from the bottom right corner to the top left corner.
- Trim excess fabric and press open.
- Repeat the same procedure with all the remaining rectangles to end up with ninety-six (96) **BA** rectangles.
- Set aside.



Borders:

- Take twelve (12) **AB** rectangles and twelve (12) **BA** rectangles.
- Starting with a **BA** rectangle, attach the rectangles together alternating their order, to create a row ending with a AB rectangle.
- Make a total of eight (8) rows and press.



DIAGRAM 3

- Take two (2) rows, turn one of the rows 180° and attach them together.
- Make a total of four (4) rows, press and set aside.



DIAGRAM 4

Block #1:

- Take eight (8) 3" x WOF strips from fabrics **D** and **E**.
- Attach one (1) **D** strip and one (1) **E** strip together, repeat with all the strips to make a total of eight (8).
- Take the template **a** and cut a total of thirty-six (36) **DE** using the seam line as a guide to align the pattern with the seam.

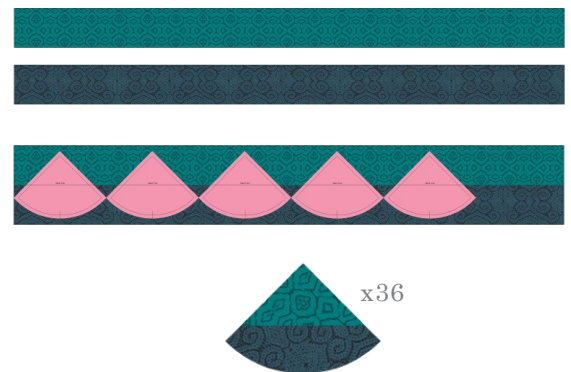


DIAGRAM 5

- Take thirty six (36) template **b** pieces from fabric **C** and the thirty-six (36) **DE** previously made.
- Align the pieces and attach them together.

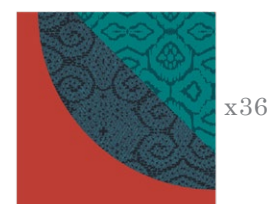


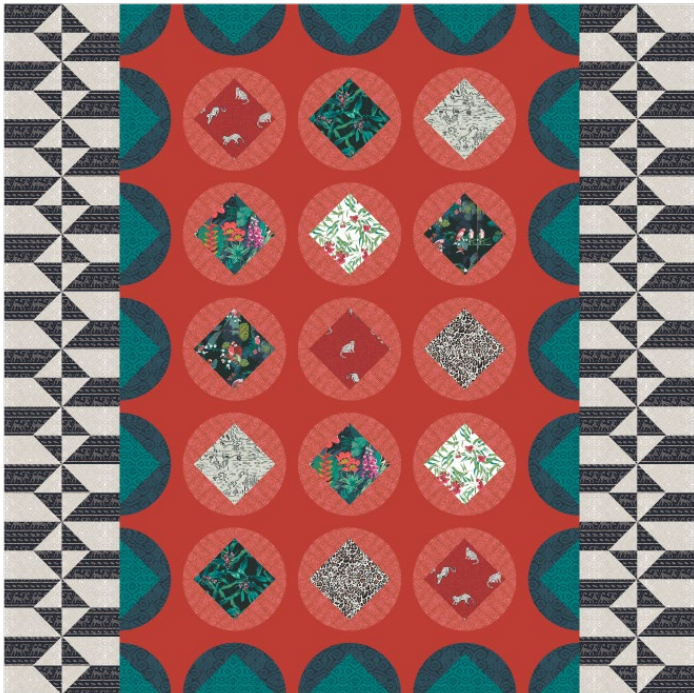
DIAGRAM 6





## QUILT TOP ASSEMBLY

- Bring the border units and attach two of them to the right and left sides of the center unit.



- Attach the remaining two (2) to the top and bottom edges of the center unit.



## QUILT ASSEMBLY

*Sew rights sides together.*

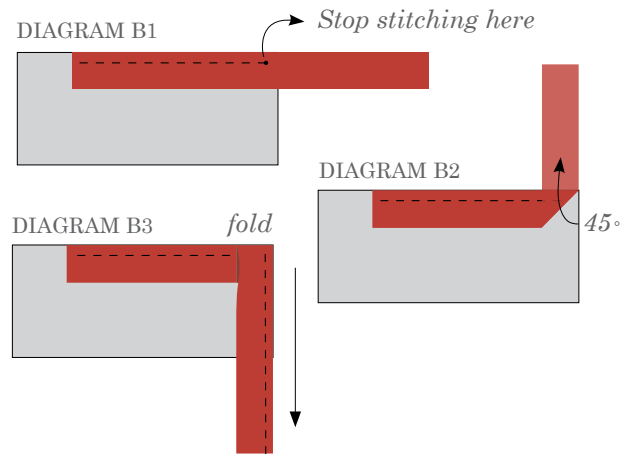
- Place BACKING FABRIC on a large surface wrong side up. Stretch it with masking tape against that surface.
- Place BATTING on top of backing fabric.
- Place TOP on top of the batting with right side facing up. Smooth away wrinkles using your hands.
- Pin all layers together and baste with basting thread, using long stitches. You can also use safety pins to join the layers.
- Machine or hand quilt starting at the center and working towards the corners. Remember that quilting motifs are a matter of personal preference. Have fun choosing yours!
- After you finished, trim excess of any fabric or batting, squaring the quilt to proceed to bind it.

## BINDING

*Sew rights sides together.*

- Cut enough strips 1½" wide by the width of the fabric **C** to make a final strip 290" long. Start sewing the binding strip in the middle of one of the sides of the quilt, placing the strip right side down and leaving an approximated 5" tail. Sew with ¼" seam allowance (using straight stitch), aligning the strip's raw edge with the quilt top's raw edge.
- Stop stitching ¼" before the edge of the quilt (DIAGRAM B 1). Clip the threads. Remove the quilt from under the machine presser foot. Fold the strip in a motion of 45° and upward, pressing with your fingers (DIAGRAM B2). Hold this fold with your finger, bring the strip down in line with the next edge, making a horizontal fold that aligns with the top edge of the quilt (DIAGRAM B3). Start sewing at ¼" of the border, stitching all the layers. Do the same in the four corners of the quilt.

- Stop stitching before you reach the last 5 or 6 inches. Cut the threads and remove the quilt from under the machine presser foot. Lay the loose ends of the binding flat along the quilt edge, folding the ends back on themselves where they meet. Press them together to form a crease. Using this crease as the stitching line, sew the two open ends of the binding with right sides together (you can help yourself marking with a pencil if the crease is difficult to see).
- Trim seam to  $\frac{1}{4}$ " and press open. Complete the sewing. Turn binding to back of the quilt, turn raw edge inside and stitch by hand using blind stitch.





XXXXXXXXXXXXXXXXXXXXXXXXXXXXXXXXXXXX

*Congratulations  
& enjoy*

XXXXXXXXXXXXXXXXXXXXXXXXXXXXXXXXXXXX



[artgalleryfabrics.com](http://artgalleryfabrics.com)

NOTE: While all possible care has been taken to ensure the accuracy of this pattern, We are not responsible for printing errors or the way in which individual work varies.

Please read instructions carefully before starting the construction of this quilt. If desired, wash and iron your fabrics before starting to cut.

© 2021 Courtesy of Art Gallery Quilts LLC. All Rights Reserved.

