

JUNGLE HEART



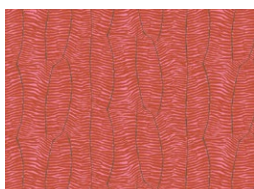
JUNGLE HEART

POUF DESIGNED BY AGFstudio



Boscage

FABRICS DESIGNED BY KATARINA ROCELLA



BSC-39901
SHIFTING FRONDS



BSC-39903
TROPICAL TAPESTRY



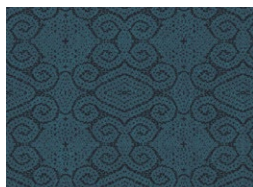
BSC-39905
PARROT GRASSLAND



BSC-39908
WANDERING LEOPARDS
RUBY



BSC-39910
WOVEN HERD



BSC-39911
PUA NIGHTFALL



FEEL THE DIFFERENCE © 2021 Courtesy of Art Gallery Quilts LLC. All Rights Reserved.

ADDITIONAL BLENDERS FOR THIS PROJECT



PE-403
FRESH WATTER



PE-418
TILE BLUE



PE-456
AURORA RED



PE-475
VERY BERRY



DEN-T-3000
BLUE BOTTLED FIELD



FINISHED SIZE | 20" x 21"

FABRIC REQUIREMENTS

Fabric A	BSC-39901	$\frac{3}{8}$ yd.
Fabric B	BSC-39903	$\frac{3}{8}$ yd.
Fabric C	BSC-39905	$\frac{5}{8}$ yd.
Fabric D	BSC-39908	$\frac{1}{4}$ yd.
Fabric E	BSC-39910	$\frac{3}{4}$ yd.
Fabric F	BSC-39911	$\frac{1}{2}$ yd.
Fabric G	PE-403	$\frac{1}{2}$ yd.
Fabric H	PE-418	$\frac{1}{2}$ yd.
Fabric I	PE-456	$\frac{1}{4}$ yd.
Fabric J	PE-475	$\frac{3}{8}$ yd.
Fabric K	DEN-T-3000	$\frac{5}{8}$ yd.

EXTRA MATERIALS

- Thick interfacing
- Card board 20" diameter circle.
- Pillow fill stuffing.

CUTTING DIRECTIONS

$\frac{1}{4}$ " seam allowances are included.
WOF means width of fabric.

- Three (3) $8\frac{1}{4}$ " squares from fabric **A**.
- Twenty four (24) 4" squares from fabric **B**.
- One (1) $20\frac{1}{2}$ " diameter circle from fabric **C**.
- Four (4) $7\frac{1}{2}$ " squares from fabric **D**.
- Twelve (12) $7\frac{1}{2}$ " squares from fabric **E**.
- Six (6) $8\frac{1}{4}$ " squares from fabric **F**.

- Twelve (12) 4" squares from fabric **G**.
- Twenty four (24) petal templates from fabric **G**.
- Twelve (12) 4" squares from fabric **H**.
- Twenty four (24) petal templates from fabric **H**.
- Twelve (12) 4" squares from fabric **I**.
- Three (3) $8\frac{1}{4}$ " squares from fabric **J**.
- Two (2) $1\frac{1}{2}$ " strips from fabric **J**.
- One (1) $20\frac{1}{2}$ " diameter circle template from fabric **C**.

CONSTRUCTION

Sew all rights sides together with $\frac{1}{4}$ " seam allowance.

- Start with the construction of the block needed to construct the Pouf.

HOUR GLASS

- Bring one (1) $8\frac{1}{4}$ " squares from fabrics **A** & **J** and two (2) $8\frac{1}{4}$ " squares from fabric **F**.



DIAGRAM 1

- With right sides together, align one of the **F** fabric square to any other square on top.
- Draw a diagonal line from corner to corner that is perpendicular to the seam.
- Stitch $\frac{1}{4}$ " away from both sides of the marked line.
- Cut the squares apart on the marked diagonal line, making 2 HST's.
- Open and press.

- Make the following combinations, **AF** and **JF**.



DIAGRAM 2

- Take one (1) **AF** and one (1) **JF**.
- With right sides together, align one of the half square triangles on top of the other.
- Make sure that fabric **F** are opposite one another and nest the seams.



DIAGRAM 3

- Draw a diagonal line from corner to corner that is perpendicular to the seam.
- Stitch $\frac{1}{4}$ " away from both sides of the marked line.
- Cut the squares apart on the marked diagonal line, making two (2) hourglass blocks.
- Open and press.

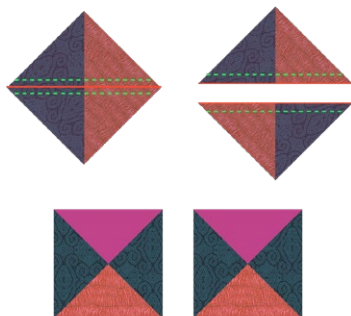


DIAGRAM 4

- Make a total of four (4) hourglass to construct the block.

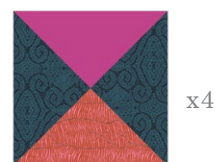


DIAGRAM 5

PETAL TEMPLATES

- Take two template petals from fabrics **G** & **H**.
- Attach them together as shown in the diagram below to create a star.
- Make a total of four (4) stars for the construction of the block.



DIAGRAM 6

- Applique the stars on top of the hourglass blocks as shown in the diagram below.
- Set aside.

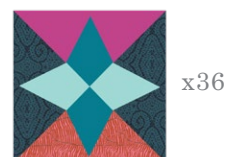


DIAGRAM 7

CORNER BLOCKS

- Take one (1) $7\frac{1}{2}$ " square from fabric **E**, two (2) 4" squares from fabric **B**, one (1) 4" squares from fabrics **G** & **H**.
- Place one (1) 4" square from fabric **B** on top of the right top corner of the $7\frac{1}{2}$ " square from fabric **E**, right sides of fabrics together.
- Sew a diagonal line as shown in the diagram below and trim excess fabric.
- Open it up and press.



DIAGRAM 8

- Move on with the next corner, place the 4" square from fabric **H** on top of the left top corner of the 7½" square from fabric **E**, right sides of fabrics together.
- Sew a diagonal line as shown in the diagram and trim excess fabric.
- Open it up and press.



DIAGRAM 9

- Move on with the bottom corners, place the remaining 4" square from fabric **B** on top of the left bottom corner of the 7½" square from fabric **E**, right sides of fabrics together.
- Sew a diagonal line as shown in the diagram and trim excess fabric.
- Open it up and press.



DIAGRAM 10

- Move on with the bottom corners, place the remaining 4" square from fabric **E** on top of the left bottom corner of the 7½" square from fabric **G**, right sides of fabrics together.
- Sew a diagonal line as shown in the diagram and trim excess fabric.
- Open it up and press.
- Make a total of four (4) corner blocks, for the construction of the block.



DIAGRAM 11

CENTER BLOCK

- Take one (1) 7½" squares from fabric **D** and four (4) 4" squares from fabric **I**.
- Repeat the previous steps made for the corner blocks.



DIAGRAM 15

- Attach the blocks together as shown in the diagram below.
- Add the fusable interfacing on the wrong side of fabric to give it more body.

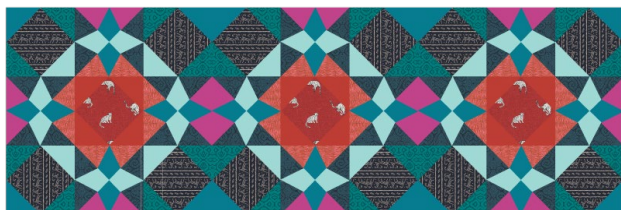


DIAGRAM 16

POUF ASSEMBLY

- Fold the strip of blocks in half, then sew the ends together to create a cylinder.



DIAGRAM 17

- Bring the 20½" diameter circle from fabric **K** and sew it to the bottom of the cylinder.



DIAGRAM 18

- Turn the cylinder inside out, place a cardboard or a hard flat surface on the bottom and start with the stuffing of your puf.



DIAGRAM 19

- Quilt as desired your 20½" diameter circle from fabric **C**.
- Then, when you are done stuffing close your puf using the fabric **C** circle, it doesn't matter that the raw edges are showing since you are going to bind it.



DIAGRAM 20

BINDING

Sew rights sides together.

- Use the 1½" strips from fabric **J** to bind the raw edges. make a final strip 70" long. Start sewing the binding strip in the middle of one of the sides of the raw edges, placing the strip right side down and leaving an approximated 5" tail. Sew with ¼" seam allowance (using straight stitch), aligning the strip's raw edge with the puf raw edge.
- Stop stitching before you reach the last 5 or 6 inches. Cut the threads and remove the puf from under the machine presser foot. Lay the loose ends of the binding flat along the edge, folding the ends back on themselves where they meet. Press them together to form a crease. Using this crease as the stitching line, sew the two open ends of the binding with right sides together (you can help yourself marking with a pencil if the crease is difficult to see).
- Trim seam to ¼" and press open. Complete the sewing. Turn binding to the other side, turn raw edge inside and stitch by hand using blind stitch.



DIAGRAM 21

XXXXXXXXXXXXXXXXXXXXXXXXXXXXXXXXXXXX

*Congratulations
& enjoy*

XXXXXXXXXXXXXXXXXXXXXXXXXXXXXXXXXXXX

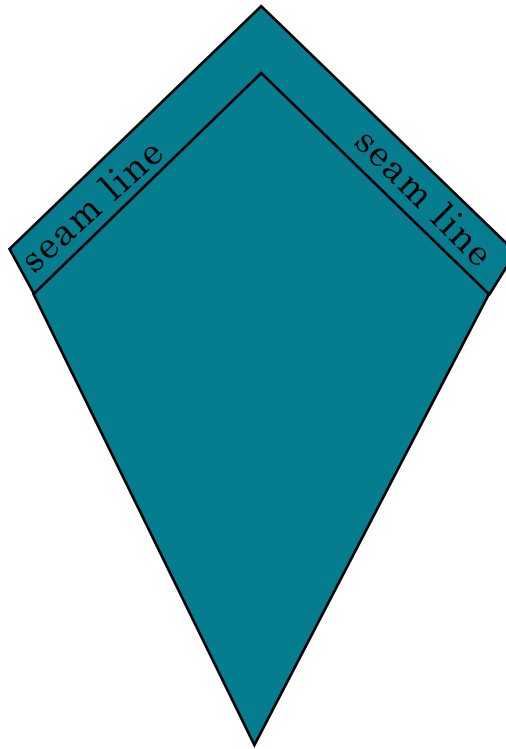


artgalleryfabrics.com

NOTE: While all possible care has been taken to ensure the accuracy of this pattern, We are not responsible for printing errors or the way in which individual work varies.

Please read instructions carefully before starting the construction of this quilt. If desired, wash and iron your fabrics before starting to cut.

© 2021 Courtesy of Art Gallery Quilts LLC. All Rights Reserved.

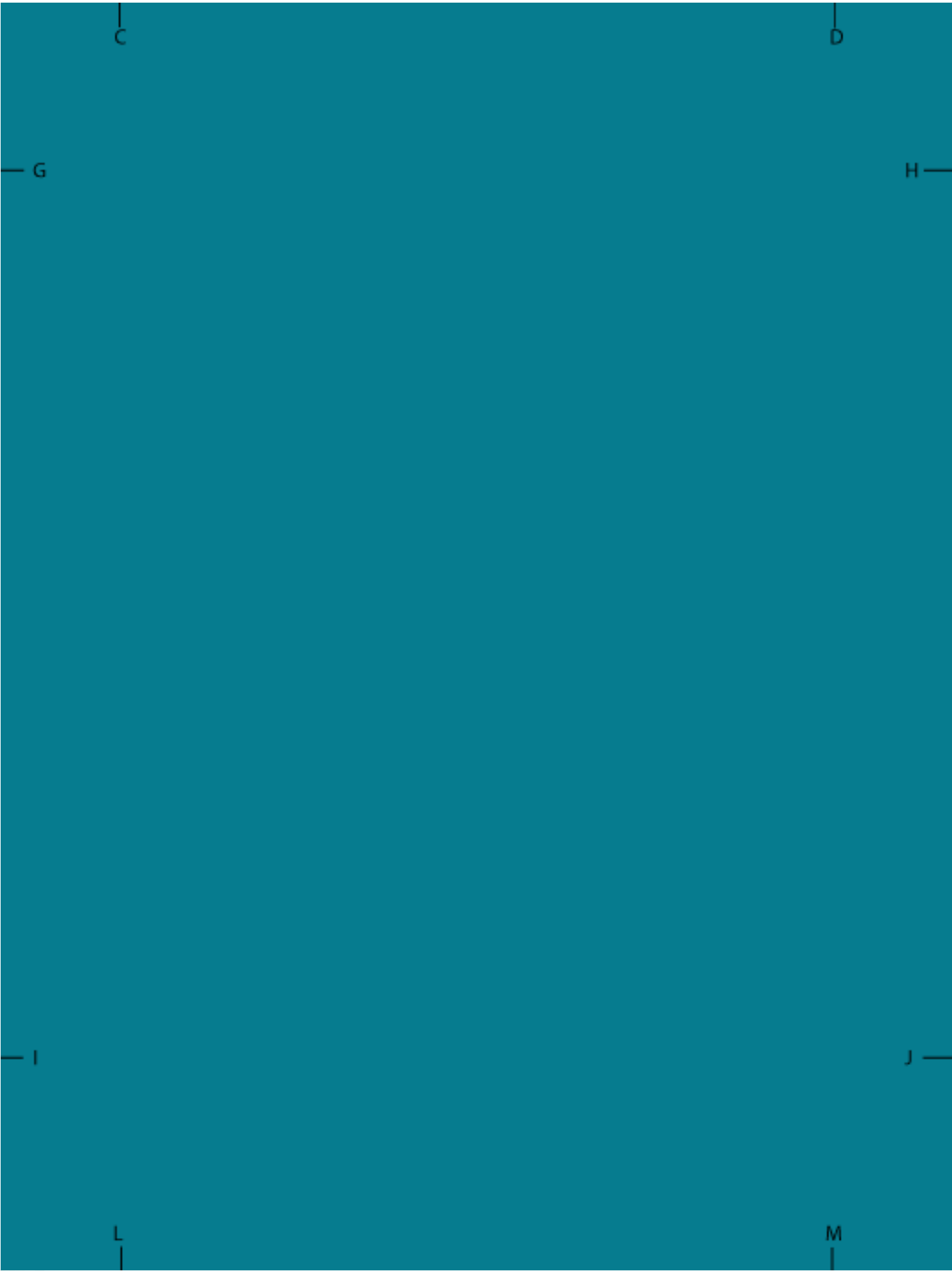




artgalleryfabrics.com







XX

F

H

J

N

x x x x x x x x x x x x x x x x x x x x

K

0

XXXXXXXXXXXXXXXXXXXXXXXXXXXX

L

M

0

p -

XX

