

A collection of colorful, patterned pillows. In the foreground, a black pillow features a repeating pattern of small, multi-colored rainbows. To its right, a white pillow is decorated with diagonal stripes in green and orange, interspersed with small red, stylized figures. In the background, a large orange pillow with a subtle pattern is visible, along with a grey pillow on the left.

XXXXXXXXXXXXXXXXXXXXXXXXXXXX

A DIVISION OF AGF

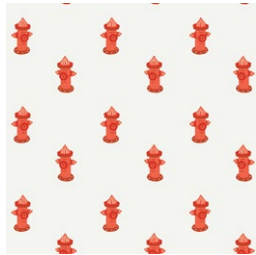
Joyous Pillows

DESIGNED BY AGFstudio

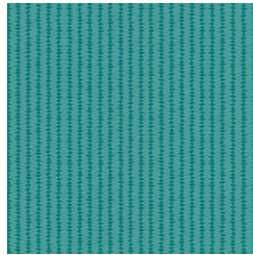


OH, WOOF!

FABRICS DESIGNED BY JESSICA SWIFT



OHW-68685
POTTY BREAK



OHW-68690
ATTACHED TO YOU



OHW-68688
FORTUNATE LOVE



OHW-68683
BREAKFAST HOUR



ADDITIONAL BLENDERS FOR THIS PROJECT



PE-449
MANDARIN



PE-459
TURMERIC

Joyous Pillows

FINISHED SIZE | 16" x 16",
22" x 14", 20" x 20"

FABRIC REQUIREMENTS

Fabric A	OHW-68685	1 yd.
Fabric B	OHW-68690	¼ yd.
Fabric C	PE-449	¼ yd.
Fabric D	OHW-68688	⅞ yd.
Fabric E	PE-459	FQ.
Fabric F	OHW-68683	⅞ yd.

BACKING FABRIC

Pillow 1: OHW-68685 (Included)

Pillow 2: OHW-68688 (Included)

Pillow 3: OHW-68683 (Included)

Additional materials:

- Piping cord.
- Batting.
- Coordinating thread.
- Assorted color Pom poms.

CUTTING DIRECTIONS

¼" seam allowances are included.
WOF means width of fabric.

- One (1) 30" x WOF rectangle from fabric **A**.
- Four (4) 30" x 1½" strips from fabric **B**.
- Four (4) 30" x 1½" strips from fabric **C**.
- Two (2) 16½" x 11" rectangles from fabric **A** (backing).
- One (1) 23" x 15" rectangle from fabric **D**.
- Two (2) 17" x 14½" rectangles from fabric **D** (backing).
- One (1) 21" square from fabric **F**.
- Two (2) 20½" x 15" rectangles from fabric **F** (backing).

CONSTRUCTION

Sew all rights sides together with ¼" seam allowance.

Pillow 1:

- Take one (1) 30" x WOF rectangle from fabric **A** and sub cut nine (9) strips at a 45 degree angle.
- You will be fussy cutting the print making sure the strip measures 2¼".

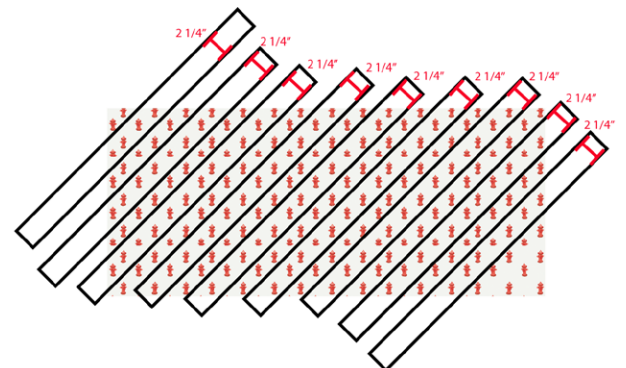


DIAGRAM 1

BACK OF PILLOW

- Align the fabric **A**, **B** and **C** strips following the diagram below.

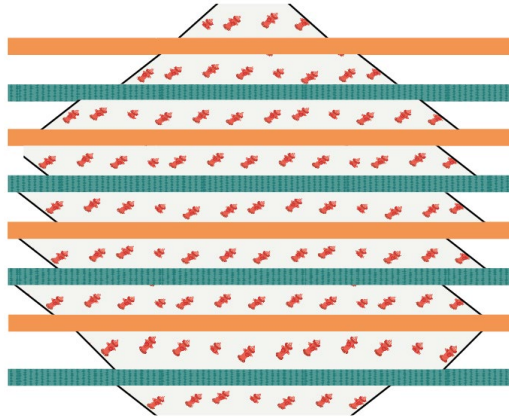


DIAGRAM 2

- Create a square template of $16\frac{1}{2}$ " x $16\frac{1}{2}$ " and place it on point.
- Trace and cut out your piece.

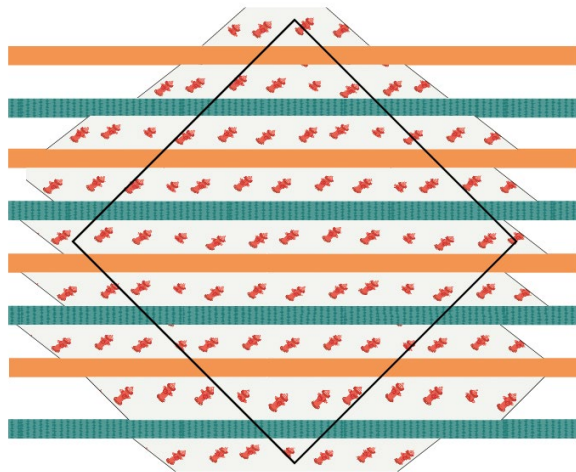


DIAGRAM 3

- Rotate the square and quilt as desired.



DIAGRAM 4

- Take both $16\frac{1}{2}$ " x 11" rectangles from fabric **A**.
- Fold one bottom edge $\frac{1}{2}$ " towards the wrong side of the fabric of one of the rectangle.
- Fold the same edge $\frac{1}{2}$ " again and edge stitch the fold in place to have a clean edge.
- Repeat the same for the top edge of the bottom piece.
- Take the quilted pillow top and lay it flat right side up.
- Take one rectangle from fabric **A** and align it wrong side up to the top side of the pillow top.
- Take the other rectangle from fabric **A** and align it wrong side up to the bottom side of the pillow top.
- Pin the three pieces in place and sew around the edges at $\frac{1}{4}$ ".
- Clip the corners and flip the piece to the right side of the fabric.
- Fill the pillow with a 16" x 16" pillow form and enjoy!

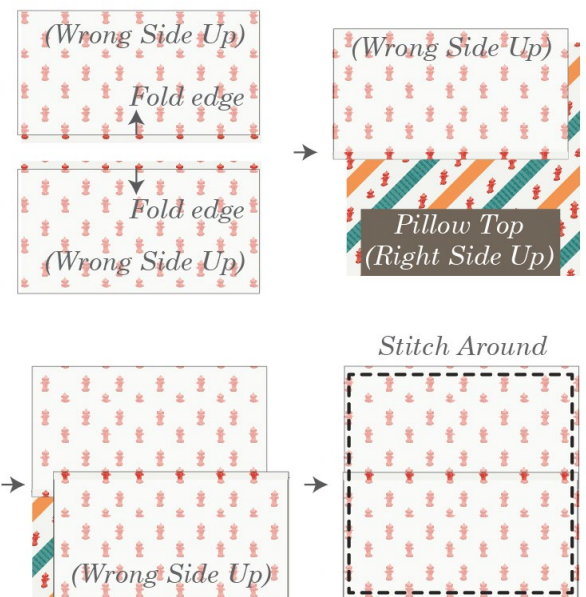


DIAGRAM 5

Pillow 2:

- Take one (1) 23" x 15" rectangle from fabric **B** and quilt as desired.
- Trim the piece to 22½" x 14½".



DIAGRAM 6

Piping:

- Take one (1) 18" x 22" rectangle from fabric **E**.
- Sub-cut 2" strips in a 45 degree angle and join them until you get a 70" long bias strip.

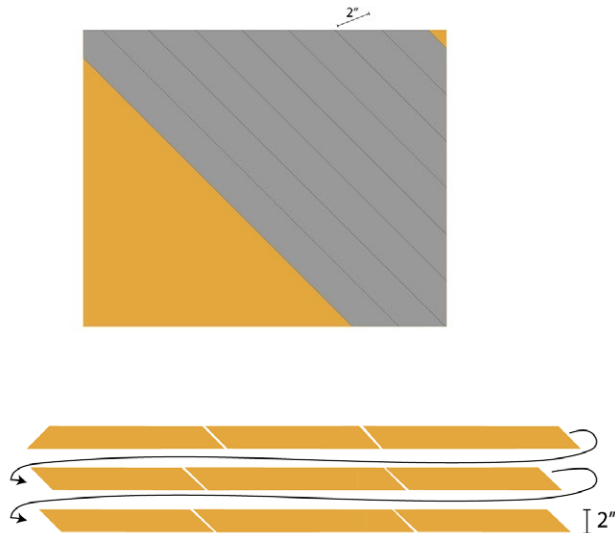


DIAGRAM 7

- Insert the cording inside the bias tape.
- Align the folded bias tape face to face with the edge of the square of fabric.
- Sew them together using a zipper foot and starting 2" from the edge of the bias tape.
- Before getting to the end of the square, clip the outside edges of the bias tape to ease the curve.

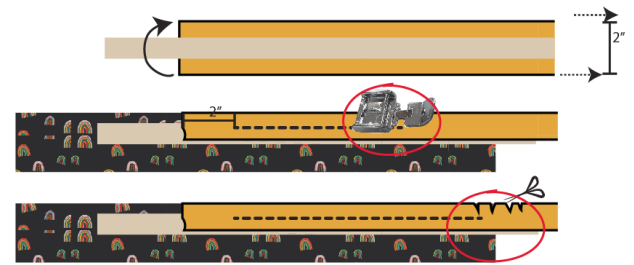


DIAGRAM 8

- After sewing all the curves and going around the square, stop 4" before the starting stitch, and align the cording to get them ready to be cut.
- Make sure the tips of the cording are flush.
- Place the bias tape on the left around the cord. Fold towards the inside the edge of the bias tape to the right to hide the raw edge.
- Cover the cording and the bias tape of the left with the bias tape of the right.
- Finish the stitch

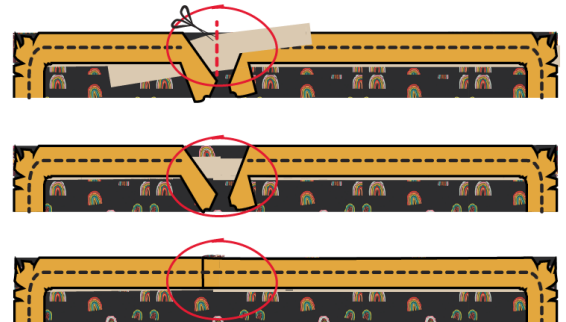


DIAGRAM 9

BACK OF PILLOW

- Take both 17" x 14½" rectangles from fabric D.
- Fold one bottom edge ½" towards the wrong side of the fabric of one of the rectangle.
- Fold the same edge ½" again and edge stitch the fold in place to have a clean edge.
- Repeat the same for the top edge of the bottom piece.

- Take the quilted pillow top and lay it flat right side up.
- Take one rectangle from fabric **D** and align it wrong side up to the right side of the pillow top.
- Take the other rectangle from fabric **D** and align it wrong side up to the left side of the pillow top.
- Pin the three pieces in place and sew around the edges at $\frac{1}{4}$ ".
- Clip the corners and flip the piece to the right side of the fabric.
- Fill the pillow with a 22" x 14" pillow form and enjoy!



DIAGRAM 10

Pillow 3:

- Take one (1) 21" square from fabric **F** and quilt as desired.
- Trim the piece to $20\frac{1}{2}$ " x $20\frac{1}{2}$ ".



DIAGRAM 11

- Lay one side of your pillow fabric on your work surface, right side up.
- Lay the pom poms along the edge of the fabric with the poms toward the center of the pillow and the threads extending outward over the edge.
- Pin the pom-poms to the edge and baste in place with your sewing machine.

BACK OF PILLOW

- Take both $20\frac{1}{2}$ " x 15" rectangles from fabric **F**.
- Fold one bottom edge $\frac{1}{2}$ " towards the wrong side of the fabric of one of the rectangle.
- Fold the same edge $\frac{1}{2}$ " again and edge stitch the fold in place to have a clean edge.
- Repeat the same for the top edge of the bottom piece.
- Take the quilted pillow top and lay it flat right side up.
- Take one rectangle from fabric **F** and align it wrong side up to the right side of the pillow top.

- Take the other rectangle from fabric **F** and align it wrong side up to the left side of the pillow top.
- Pin the three pieces in place and sew around the edges at $\frac{1}{4}$ ".
- Clip the corners and flip the piece to the right side of the fabric.
- Fill the pillow with a 20" x 20" pillow form and enjoy!

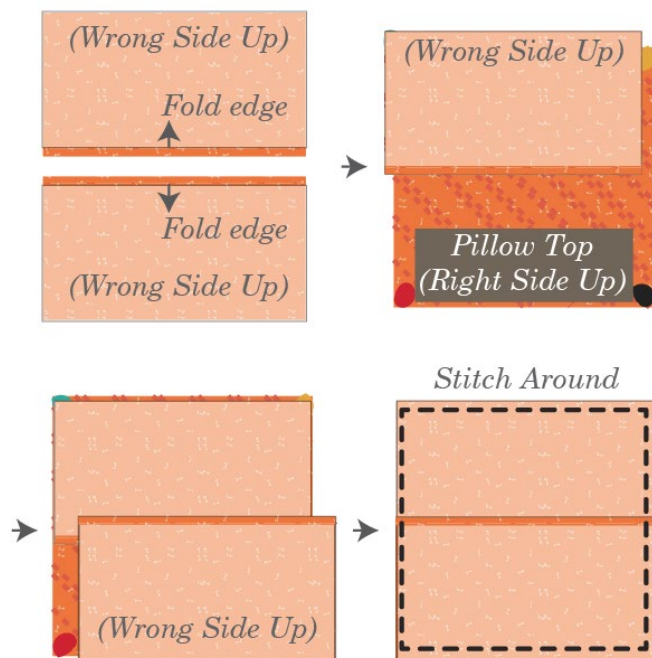


DIAGRAM 12

XXXXXXXXXXXXXXXXXXXXXXXXXXXXXXXXXXXX

*Congratulations
& enjoy*

XXXXXXXXXXXXXXXXXXXXXXXXXXXXXXXXXXXX



artgalleryfabrics.com

NOTE: While all possible care has been taken to ensure the accuracy of this pattern, We are not responsible for printing errors or the way in which individual work varies.

Please read instructions carefully before starting the construction of this quilt. If desired, wash and iron your fabrics before starting to cut.

© 2021 Courtesy of Art Gallery Quilts LLC. All Rights Reserved.