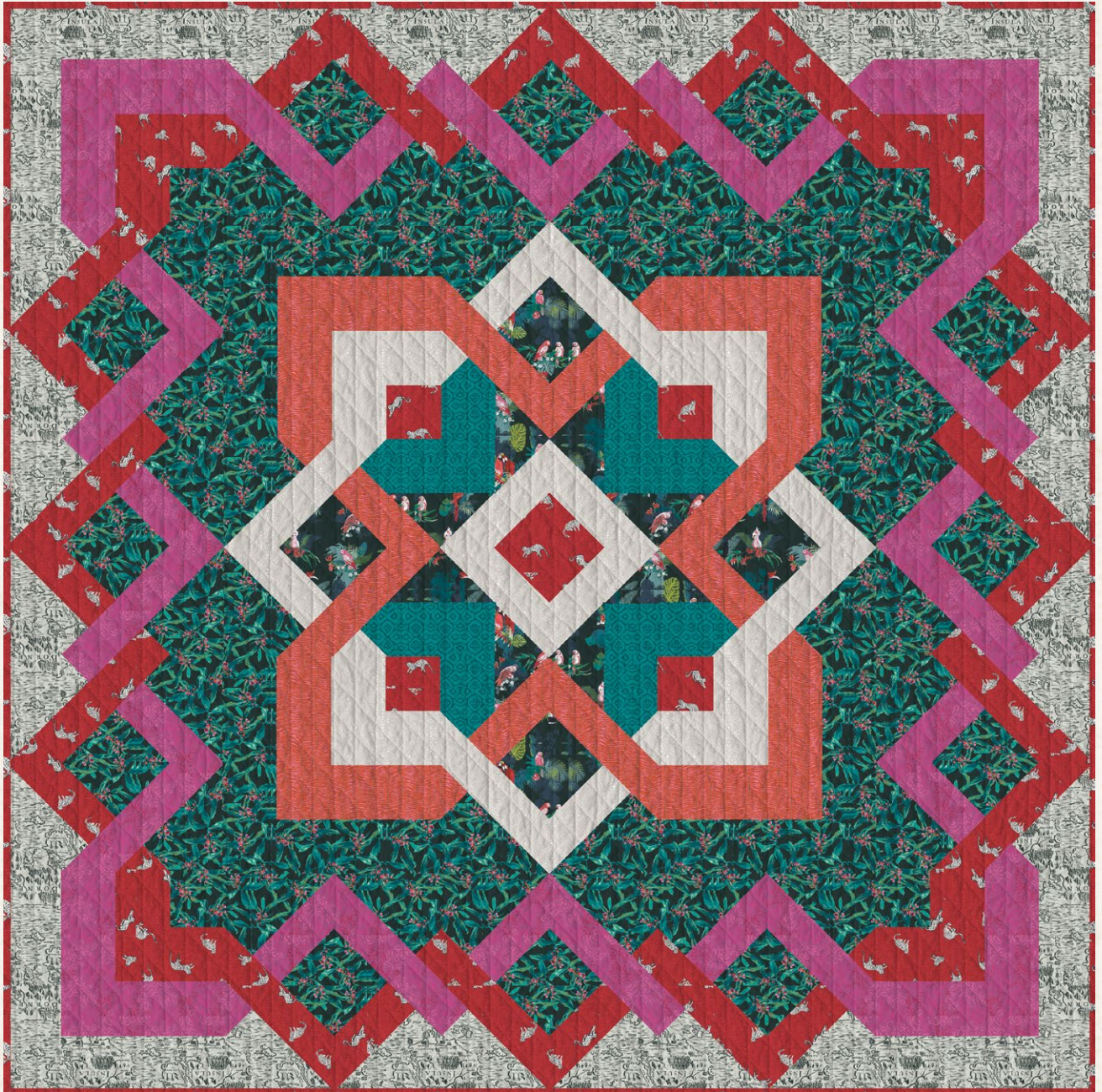


hibiscus

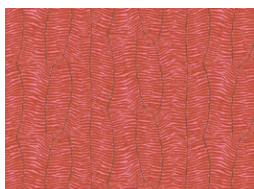


hibiscus

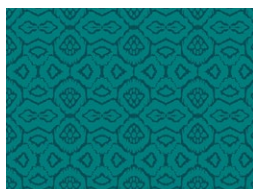
QUILT DESIGNED BY AGFstudio

Boscage

FABRICS DESIGNED BY KATARINA ROCELLA



BSC-39901
SHIFTING FRONDS



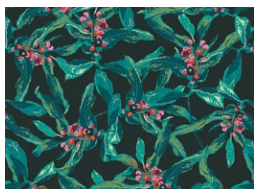
BSC-39903
TROPICAL TAPESTRY



BSC-39904
BORNEO IMPRINT



BSC-39905
PARROT GRASSLAND



BSC-39907
JUNGLE BERRIES



BSC-39908
WANDERING LEOPARDS
RUBY



BSC-39909
CEREMONIAL KAIN



FEEL THE DIFFERENCE © 2021 Courtesy of Art Gallery Quilts LLC. All Rights Reserved.



NE-127
CYCLAMEN



FINISHED SIZE | 80" x 80"

FABRIC REQUIREMENTS

Fabric A	BSC-39907	2¼ yd.
Fabric B	BSC-39904	1½ yd.
Fabric C	BSC-39908	2⅛ yd.
Fabric D	NE-127	1¾ yd.
Fabric E	BSC-39903	½ yd.
Fabric G	BSC-39909	⅞ yd.
Fabric H	BSC-39901	1 yd.
Fabric I	BSC-39905	¾ yd.

BACKING FABRIC
BSC-39906 5 ½ yds (*Suggested*)

BINDING FABRIC
Fabric **C** BSC-39908 (*Included*)

CUTTING DIRECTIONS

¼" seam allowances are included.
WOF means width of fabric.

- Thirty six (36) 4½" squares from fabric **A**.
- Four (4) 12½" x 4½" rectangles from fabric **A**.
- Four (4) 16½" x 4½" rectangles from fabric **A**.

- Ten (10) 9¾" squares from fabric **A**.
- Four (4) 10½" squares from fabric **A**.
- Four (4) 5¼" squares from fabrics **A**.
- Twenty four (24) 4½" from fabric **B**.
- Four (4) 12½" x 4½" rectangles from fabric **B**.
- Four (4) 16½" x 4½" rectangles from fabric **B**.
- Three (3) 9¾" squares from fabric **B**.
- Four (4) 10½" squares from fabric **B**.
- Eight (8) 4½" squares from fabric **C**.
- Four (4) 8½" x 4½" rectangles from fabric **C**.
- Seven (7) 9¾" squares from fabric **C**.
- Twenty four (24) 4⅞" squares from fabric **C**.
- Four (4) 10½" squares from fabric **C**.
- Four (4) 8½" x 4½" rectangles from fabric **D**.
- Four (4) 12½" x 4½" rectangles from fabric **D**.
- Six (6) 9¾" squares from fabric **D**.
- Twenty four (24) 4⅞" squares from fabric **D**.
- Four (4) 10½" squares from fabric **D**.
- Twelve (12) 4½" squares from fabric **E**.
- Four (4) 5¼" squares from fabrics **E**.
- Four (4) 8½" x 4½" rectangles from fabric **G**.
- Four (4) 4½" x squares from fabric **G**.
- Four (4) 9¾" squares from fabric **G**.
- Eight (8) 4⅞" squares from fabric **G**.
- Four (4) 5¼" squares from fabrics **G**.
- Four (4) 8½" x 4½" rectangles from fabric **H**.
- Four (4) 12½" x 4½" rectangles from fabric **H**.
- Two (2) 9¾" squares from fabric **H**.
- Eight (8) 4⅞" squares from fabric **H**.
- Four (4) 5¼" squares from fabrics **H**.
- Four (4) 9¾" squares from fabric **I**.

CONSTRUCTION

Sew all rights sides together with 1/4" seam allowance.

Eight at a time HST (Half Square Triangles):

- So you will take one (1) 9 3/4" square from each fabric and place them face to face.
- Draw two lines on the diagonal and stitch at 1/4" from each side of each line.
- Cut following the red lines. Open and press.
- You should get eight (8) 4 1/2" half square triangles.

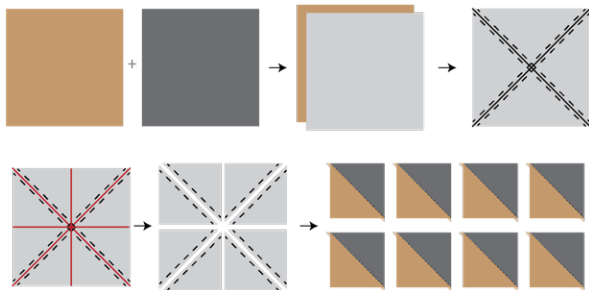






DIAGRAM 1


- Pair them in the following way to get 4 1/2" HSTs.


3 **BC** = 24 

3 **AC** = 24 

6 **AD** = 48 

1 **AG** = 8 

2 **HI** = 16 

2 **GI** = 16 

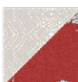



1 **GC** = 8 

DIAGRAM 2

- Take four (4) 10 1/2" squares from fabrics **A**, **B**, **C**, and **D**.
- Pair them in the following way to get 4 7/8" HSTs.

2 **BD** = 16 

2 **AD** = 16 

2 **BC** = 16 


2 **AC** = 16 

DIAGRAM 3

- Take twenty four (24) 4 7/8" squares from fabrics **C** and **D**.
- Pair them with the 4 7/8" HST following the diagram to get 4 1/2" QST (Quarter Square Triangles).
- For this quilt you will only use the QST that are circled in the following diagram, save the other ones for future projects.

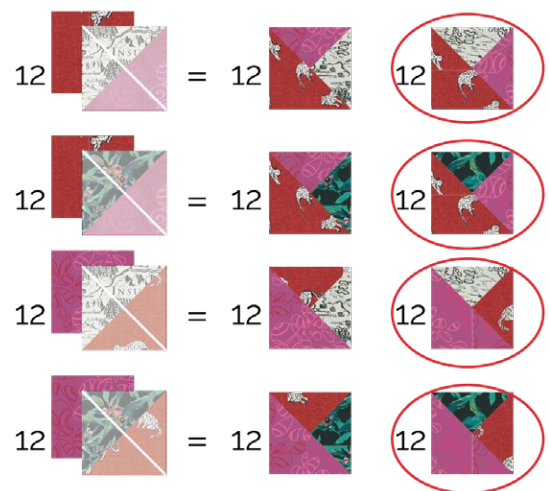


DIAGRAM 4

HST (Half Square Triangles):

- Place the squares face to face. Draw a diagonal line and stitch at 1/4" from each side of the line.
- Trim on the drawn line. Open and press.

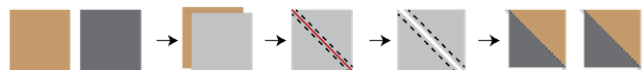


DIAGRAM 5

- Take four (4) 5 1/4" squares from fabrics **A**, **E**, **G**, and **H**.
- Pair them in the following diagram 6 to get 4 7/8" HST.

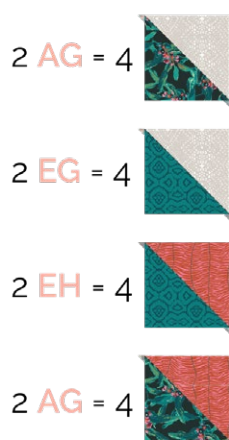


DIAGRAM 6

- Take eight (8) 4 7/8" squares from fabrics **G** and **H** and pair them following diagram 7 with the 4 7/8" HSTs to get 4 1/2" QSTs.
- Make sure to draw and stitch on the diagonal that crosses both fabrics.
- For this quilt you will only use the QST that are circled in the following diagram, save the other ones for future projects.

XXXXXXXXXXXXXXXXXXXXXXXXXXXXXXXXXXXX

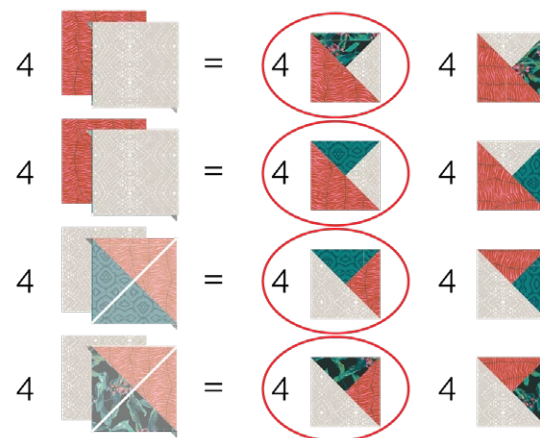


DIAGRAM 7

Block A:

- Take four (4) 16 1/2" x 4 1/2" rectangles from fabric **B**, four (4) 12 1/2" x 4 1/2" rectangles from fabrics **B** and **D**, four (4) 8 1/2" x 4 1/2" rectangles from fabric **D** and **C**, and four (4) 4 1/2" squares from fabrics **A** and **C**.
- Make four (4) blocks:

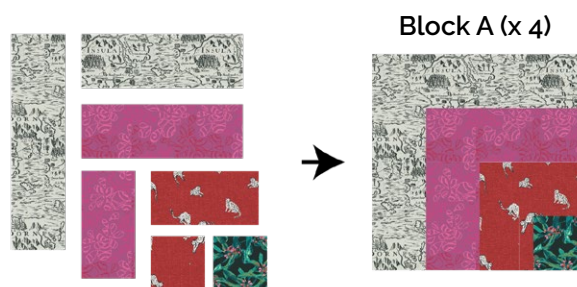


DIAGRAM 8

Block B:

- Take twenty four (24) 4 1/2" squares from fabrics **A** and **B**, and the HSTs following the diagram.
- Make twelve (12) blocks.

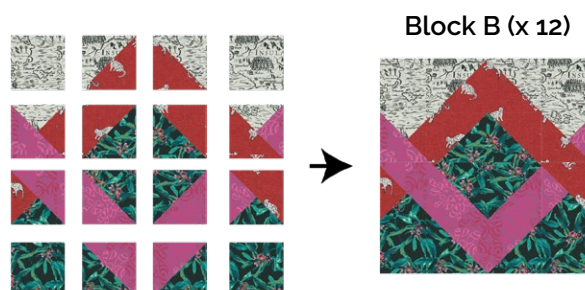


DIAGRAM 9

Block C:

- Take four (4) $16\frac{1}{2}$ " rectangles from fabric **A**, four (4) $12\frac{1}{2}$ " x $4\frac{1}{2}$ " rectangles from fabrics **A** and **H**, four (4) $8\frac{1}{2}$ " x $4\frac{1}{2}$ " rectangles from fabric **H** and **G**, and four (4) $4\frac{1}{2}$ " squares from fabrics **G** and **C**.
- Make four (4) blocks.

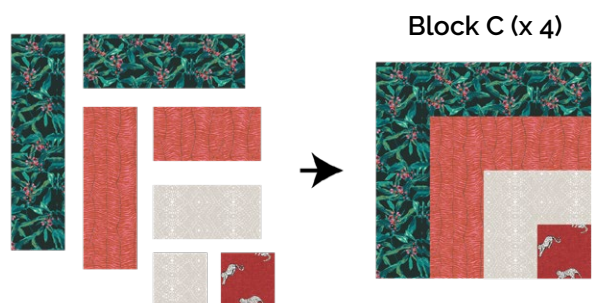


DIAGRAM 10

Block D:

- Take eight (8) 4½" squares from fabrics **A** and **E**, and the HSTs following the diagram.
- Make four (4) blocks.

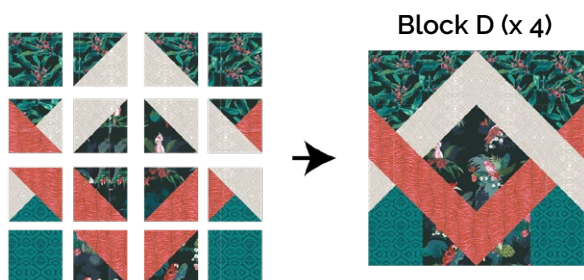


DIAGRAM 11

Block E:

- Take four (4) 4½" squares from fabric **E**, and the HSTs following the diagram.

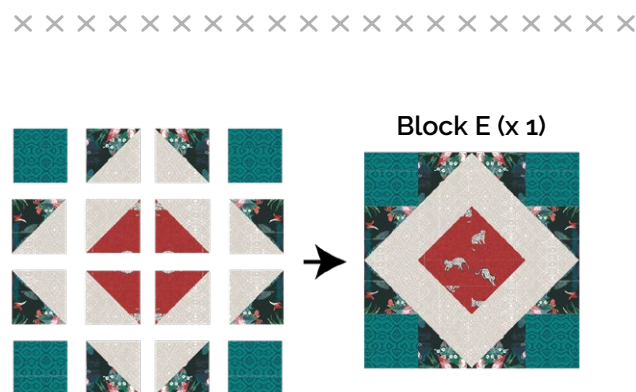


DIAGRAM 12

QUILT TOP

- Join the blocks following diagram 12.

A	B	B	B	A
B	C	D	C	B
B	D	E	D	B
B	C	D	C	B
A	B	B	B	A

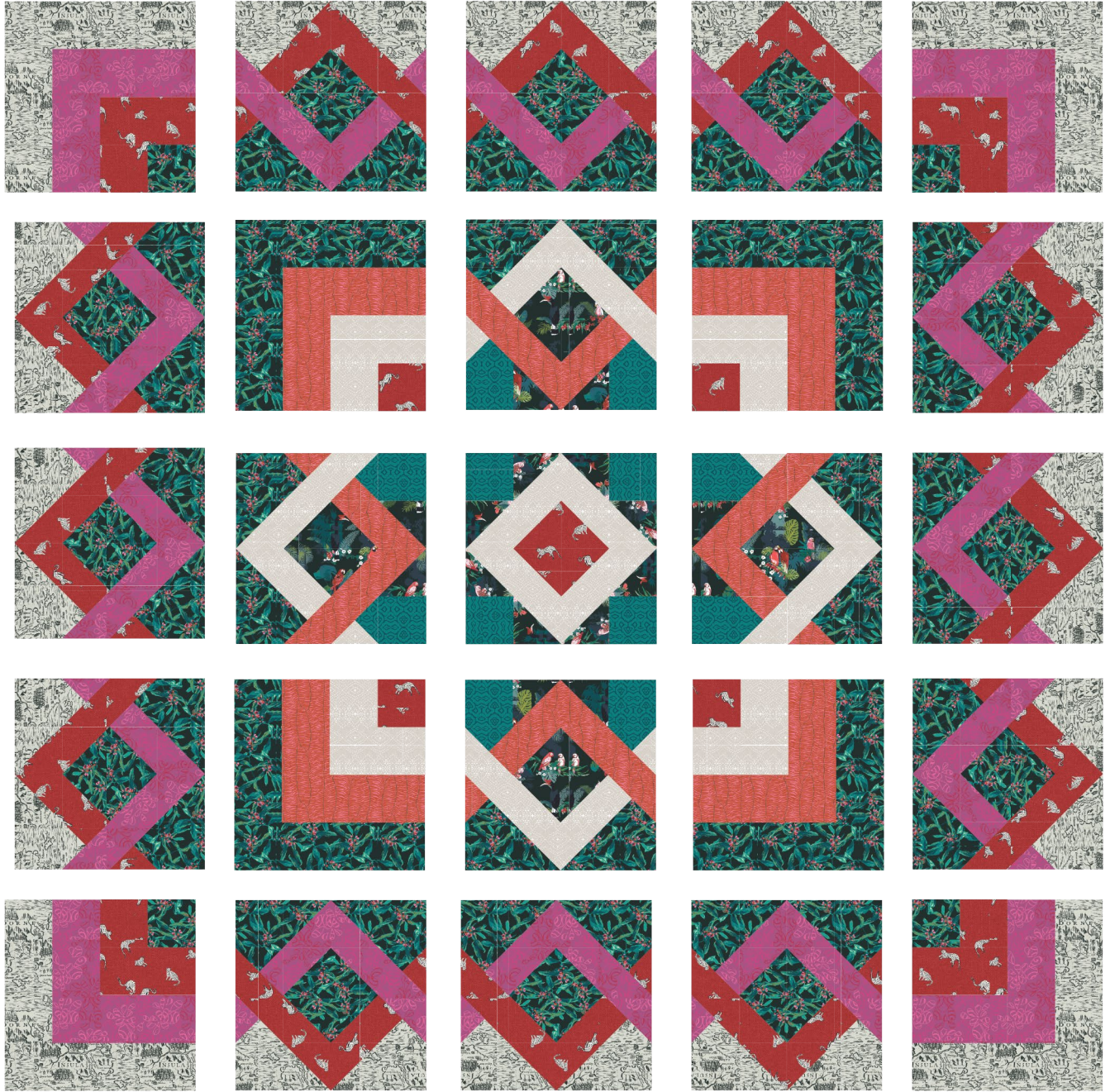


DIAGRAM 13

QUILT ASSEMBLY

Sew rights sides together.

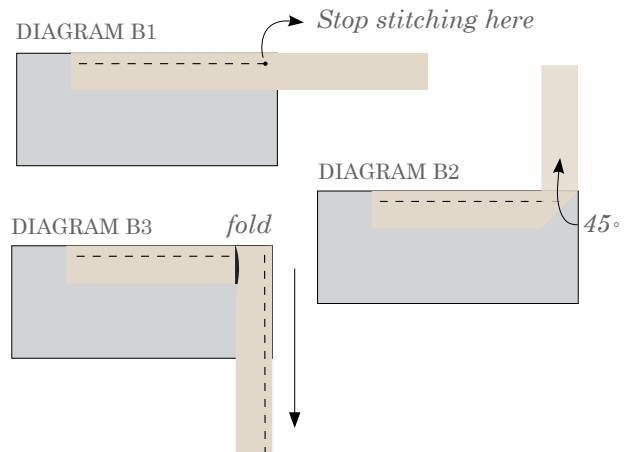
- Place BACKING FABRIC on a large surface wrong side up. Stretch it with masking tape against that surface.
- Place BATTING on top of backing fabric.
- Place TOP on top of the batting with right side facing up. Smooth away wrinkles using your hands.
- Pin all layers together and baste with basting thread, using long stitches. You can also use safety pins to join the layers.
- Machine or hand quilt starting at the center and working towards the corners. Remember that quilting motifs are a matter of personal preference. Have fun choosing yours!
- After you finished, trim excess of any fabric or batting, squaring the quilt to proceed to bind it.

BINDING

Sew rights sides together.

- Cut enough strips $1\frac{1}{2}$ " wide by the width of the fabric **C** to make a final strip 330" long. Start sewing the binding strip in the middle of one of the sides of the quilt, placing the strip right side down and leaving an approximated 5" tail. Sew with $\frac{1}{4}$ " seam allowance (using straight stitch), aligning the strip's raw edge with the quilt top's raw edge.
- Stop stitching $\frac{1}{4}$ " before the edge of the quilt (DIAGRAM B 1). Clip the threads. Remove the quilt from under the machine presser foot. Fold the strip in a motion of 45° and upward, pressing with your fingers (DIAGRAM B2). Hold this fold with your finger, bring the strip down in line with the next edge, making a horizontal fold that aligns with the top edge of the quilt (DIAGRAM B3). Start sewing at $\frac{1}{4}$ " of the border, stitching all the layers. Do the same in the four corners of the quilt.

- Stop stitching before you reach the last 5 or 6 inches. Cut the threads and remove the quilt from under the machine presser foot. Lay the loose ends of the binding flat along the quilt edge, folding the ends back on themselves where they meet. Press them together to form a crease. Using this crease as the stitching line, sew the two open ends of the binding with right sides together (you can help yourself marking with a pencil if the crease is difficult to see).
- Trim seam to $\frac{1}{4}$ " and press open. Complete the sewing. Turn binding to back of the quilt, turn raw edge inside and stitch by hand using blind stitch.



XXXXXXXXXXXXXXXXXXXXXXXXXXXX

*Congratulations
& enjoy*

XXXXXXXXXXXXXXXXXXXXXXXXXXXX



artgalleryfabrics.com

NOTE: While all possible care has been taken to ensure the accuracy of this pattern, We are not responsible for printing errors or the way in which individual work varies.

Please read instructions carefully before starting the construction of this quilt. If desired, wash and iron your fabrics before starting to cut.

© 2021 Courtesy of Art Gallery Quilts LLC. All Rights Reserved.