



XXXXXXXXXXXXXXXXXXXXXXXXXXXX

A DIVISION OF AGF

Daydream

Dog Bed

DESIGNED BY AGFstudio



OH, WOOF!

FABRICS DESIGNED BY JESSICA SWIFT



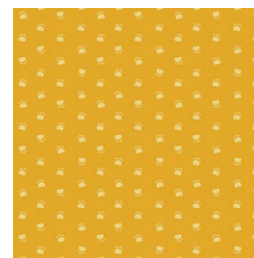
OHW-68681
DINNER HOUR



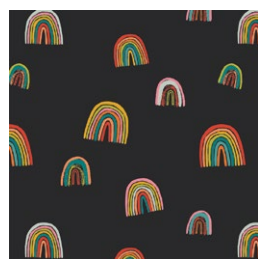
OHW-68682
FREEDOM STROLL



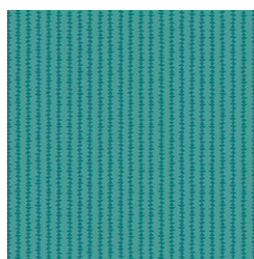
OHW-68683
BREAKFAST HOUR



OHW-68686
PAWSOME WALK



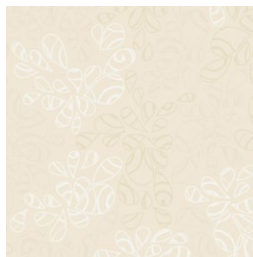
OHW-68688
FORTUNATE LOVE



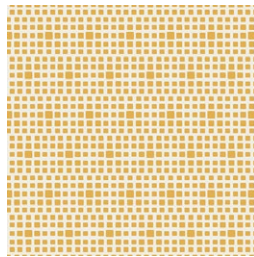
OHW-68690
ATTACHED TO YOU



ADDITIONAL BLENDERS FOR THIS PROJECT



NE-104
NATURAL



SE-602
HONEYCOMB

Daydream Dog Bed

FINISHED SIZE | 27" x 27" x 3½"

FABRIC REQUIREMENTS

Fabric A	OHW-68690	¼ yd.
Fabric B	OHW-68682	¼ yd.
Fabric C	OHW-68686	¼ yd.
Fabric D	OHW-68688	¼ yd.
Fabric E	OHW-68683	¼ yd.
Fabric F	SE-602	Fat 8
Fabric G	NE-104	3⅞ yd.
Fabric H	OHW-68681	1½ yd.

EXTRA MATERIAL
28" Zipper or longer

CUTTING DIRECTIONS

¼" seam allowances are included.
WOF means width of fabric.

- Fifteen (15) 4" squares from fabric **A**.
- Four (4) 5" x 1½" strips from fabric **A**.
- Twenty (20) 4" squares from fabric **B**.
- Sixteen (16) 4" squares from fabric **C**.
- Twelve (12) 4" squares from fabric **D**.
- Ten (10) 4" squares from fabric **E**.
- Eight (8) 4" squares from fabric **F**.

- Eighty one (81) 3½" squares from fabric **G**.
- One (1) 29" square from fabric **G**.
- One (1) 31" x 18" rectangle from fabric **G**.
- One (1) 31" square from fabric **G**.
- One (1) 31" x 18" rectangle from fabric **H**.
- One (1) 31" square from fabric **H**.

CONSTRUCTION

Sew all rights sides together with ¼" seam allowance.

- Take all the 4" squares from fabrics **A, B, C, D, E, and F**, and pair them with a 3½" square from fabric **G**.
- Align each 4" square on top of a square from fabric **G** in corner 1.
- Make 4 to 6 stitches to join them.
- Align both fabrics on corner 2.
- Fold the top fabric between corners 1 and 2 and finish to stitch both fabrics together.

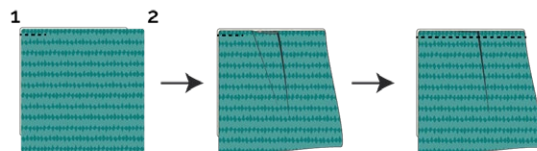
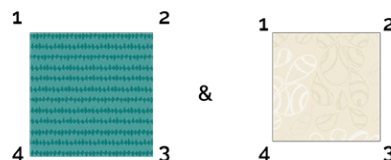


DIAGRAM 1

- You can chain stitch your squares in any order, then separate them.

Chain Stitch

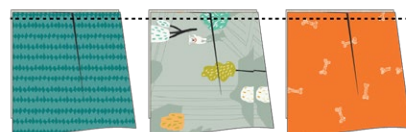
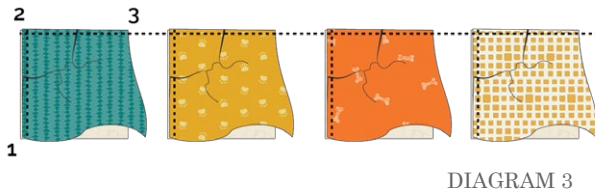
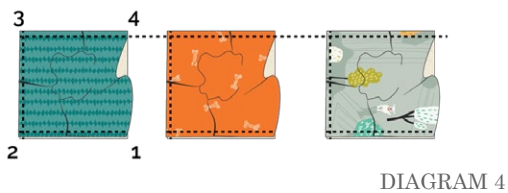


DIAGRAM 2

- Repeat the same process for corners 2 to 3.
- You can chain stitch your squares in any order, then separate them.



- Repeat the same process for corners 3 to 4.
- You can chain stitch your squares in any order, then separate them.

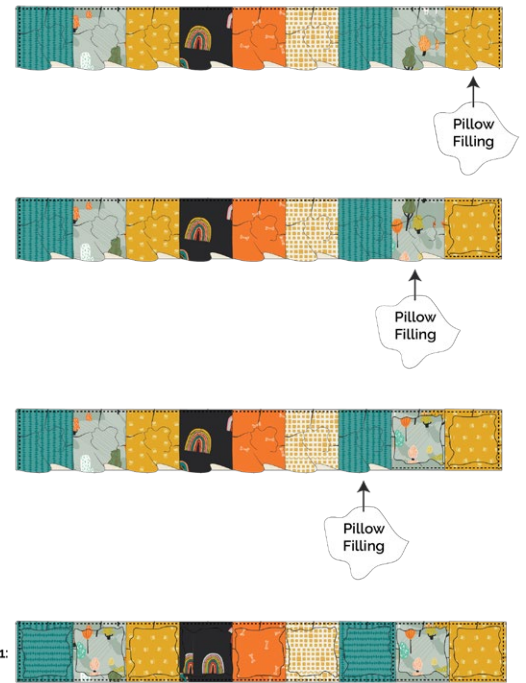


- As a result you should have the following:



- Row 1: **A - B - C - D - E - F - A - B - C**
- Fill the first puff case.
- Stitch the edge as you did previously.
- Continue puff by puff until you have the whole row finished.

XX



- Row 2: **B - A - B - C - D - E - F - A - B**
- Join row 2 to row 1.
- Fill the cases from row 2, in the same way you did row 1.



- Row 3: **C - B - A - B - C - D - E - F - A**
- Join row 3 to row 1 & 2.
- Fill the cases from row 3, in the same way you did row 1 & 2.

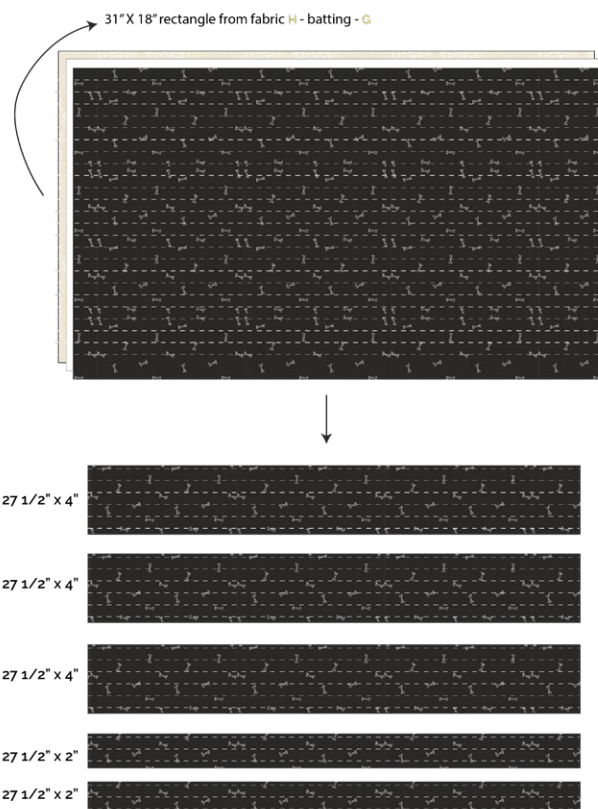


-
- A 9x9 grid of 81 small images. The images are arranged in a checkerboard-like pattern of 9 rows and 9 columns. The patterns and objects include:
 - Teal background with white vertical stripes.
 - Light blue background with small white fish.
 - Yellow background with white polka dots.
 - Dark blue background with a white rainbow.
 - Orange background with white polka dots.
 - White background with a grid of small black dots.
 - Teal background with white horizontal stripes.
 - Light blue background with a white fish.
 - Yellow background with white polka dots.
 The grid is labeled 'Row 1' through 'Row 9' on the left side.

XX



- Layer the 31" X 18" rectangles from fabric **H** - batting - fabric **G**.
- Quilt the whole piece.
- Sub-cut three (3) 27½ x 4" rectangles and two (2) 27½ x 2" rectangles.



artgalleryfabrics.com

- Take the two (2) 27½" x 2" quilted strips and the zipper.
- Join them.
- Trim the whole piece to 27½" x 4".

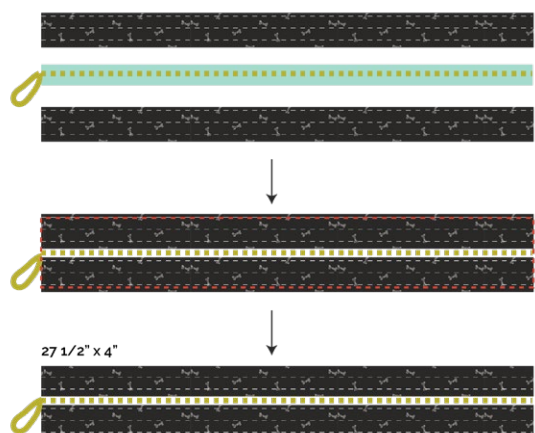


DIAGRAM 10

- Join the four quilted strips wrong sides together.
- Bind the raw edges with fabric A.

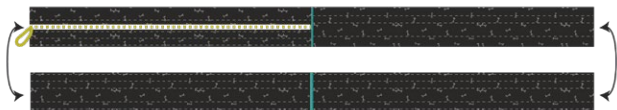


DIAGRAM 11

- Layer the 31" squares from fabric H - batting - fabric G.
- Quilt as desired.
- Trim to a 27½" square.

XXXXXXXXXXXXXXXXXXXXXXXXXXXXXXXXXXXX

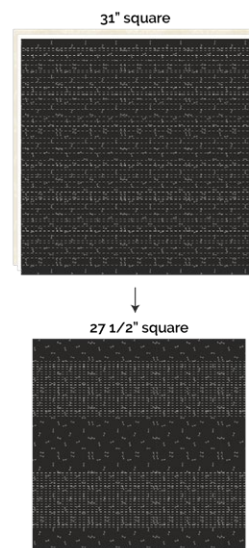


DIAGRAM 12

- Join the top, the sides and the bottom.
- Fill the bed with pillow filling.

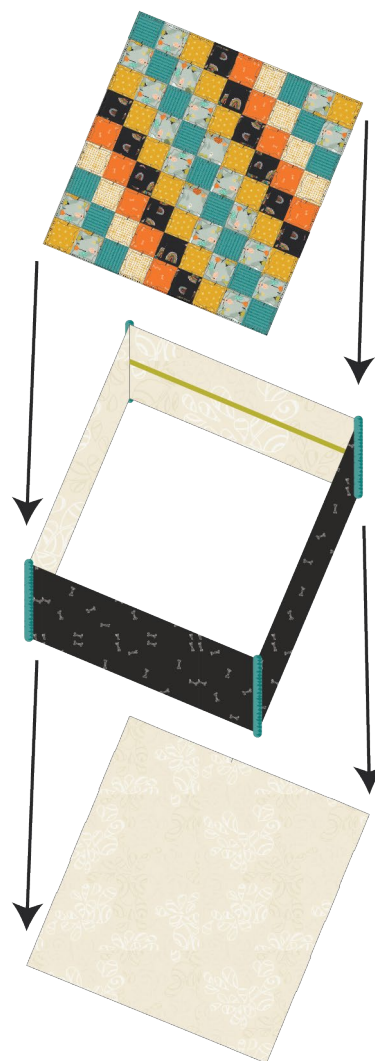


DIAGRAM 13

XXXXXXXXXXXXXXXXXXXXXXXXXXXXXXXXXXXX

*Congratulations
& enjoy*

XXXXXXXXXXXXXXXXXXXXXXXXXXXXXXXXXXXX



artgalleryfabrics.com

NOTE: While all possible care has been taken to ensure the accuracy of this pattern, We are not responsible for printing errors or the way in which individual work varies.

Please read instructions carefully before starting the construction of this quilt. If desired, wash and iron your fabrics before starting to cut.

© 2021 Courtesy of Art Gallery Quilts LLC. All Rights Reserved.