





Triangle

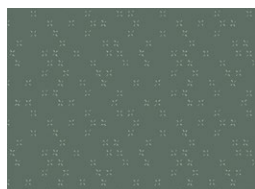
DESIGNED BY AGFstudio



FABRICS DESIGNED BY SHARON HOLLAND



LLP-56708
FORT IMAGINATION



LLP-56711
TWINKLE TWINKLE
EVERGREEN



LLP-56713
ODE TO TOADY

ADDITIONAL BLENDERS FOR THIS PROJECT



PE-496
CRYSTALLINE



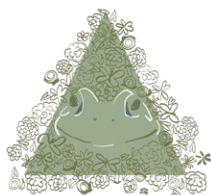
DSE 700
CLOUD



DEN-S-2001
INDIGO SHADOW



FEEL THE DIFFERENCE © 2021 Courtesy of Art Gallery Quilts LLC. All Rights Reserved.



Triangle

FINISHED SIZE | 24" x 18"

FABRIC REQUIREMENTS

Fabric A	LLP-56713	¼ yd.
Fabric B	LLP-56708	¼ yd.
Fabric C	DEN-S-2001	¼ yd.
Fabric D	PE-496	¼ yd.
Fabric E	LLP-56711	¼ yd.
Fabric F	DSE-700	¼ yd.

CUTTING DIRECTIONS

¼" seam allowances are included.
WOF means width of fabric.

- Cut one (1) 6⅞" x WOF strip from fabrics **A**, **B**, **C**, **D**, **E**, and **F**.
- Sub-cut the template from each strip as indicated in Diagram 1, until you have the following:
- Ten (10) templates from fabric **A**.
- Ten (10) templates from fabric **B**.
- Eight (8) templates from fabric **C**.
- Eight (8) templates from fabric **D**.
- Eight (8) templates from fabric **E**.
- Ten (10) templates from fabric **F**.

XXXXXXXXXXXXXXXXXXXXXXXXXXXXXXXXXXXX

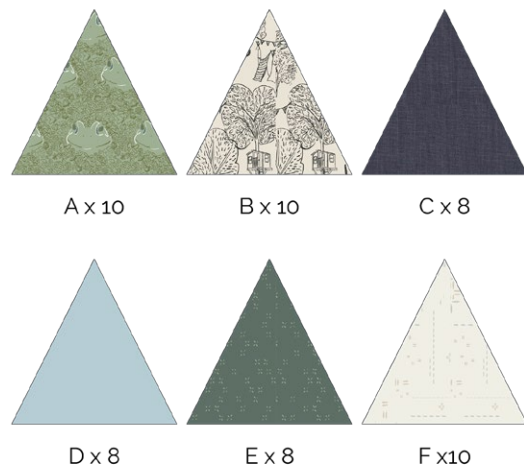


DIAGRAM 1

CONSTRUCTION

Sew all rights sides together with ¼" seam allowance.

Block (x 2):

- Join the triangles into three rows to make each block:
- Row 1: **A - B - C - D - E - F - A - F - C**
- Row 2: **E - D - F - B - A - C - B - D - E**
- Row 3: **B - A - C - D - F - E - A - F - B**



DIAGRAM 2

- Trim the side edges and quilt as desired.



DIAGRAM 3

- Align both pieces face to face.
- Join them at $\frac{1}{4}$ " from the edge leaving a 3" opening.
- Turn your pillow case to the right side.
- Fill it out with pillow filling.
- Close the 3" opening by hand.



DIAGRAM 4

XXXXXXXXXXXXXXXXXXXXXXXXXXXXXXXXXXXX

*Congratulations
& enjoy*

XXXXXXXXXXXXXXXXXXXXXXXXXXXXXXXXXXXX



artgalleryfabrics.com

NOTE: While all possible care has been taken to ensure the accuracy of this pattern, We are not responsible for printing errors or the way in which individual work varies.

Please read instructions carefully before starting the construction of this quilt. If desired, wash and iron your fabrics before starting to cut.

© 2021 Courtesy of Art Gallery Quilts LLC. All Rights Reserved.

1" x 1"
printer
test
square



Triangle

Template