

X
X
X
X
X
X
X
X
X
X
X
X



Tree House



XXXXXXXXXXXXXXXXXXXXXXXXXXXX



Tree House

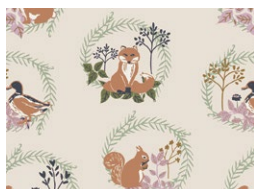
QUILT DESIGNED BY AGFstudio

Lilliput

FABRICS DESIGNED BY SHARON HOLLAND



LLP-56704
DAISY CHAIN



LLP-56702
FOREST FRIENDS



LLP-56709
FIELD DAY



LLP-56715
SECRET GARDEN



LLP-56706
FERNGULLY



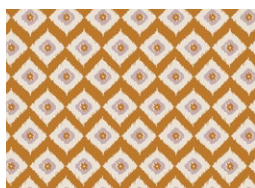
LLP-56712
SKIMMERS



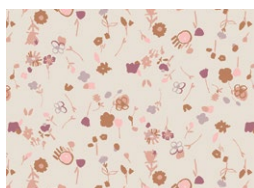
LLP-56713
ODE TO TOADY



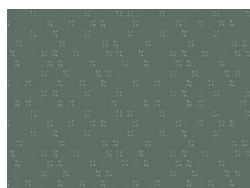
LLP-56700
FULL BLOOM



LLP-56707
LILLIPUTIAN



LLP-56705
BUDDING ARTIST



LLP-56711
TWINKLE TWINKLE
EVERGREEN



LLP-56703
TWINKLE TWINKLE
GALAXY

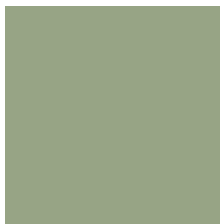


FEEL THE DIFFERENCE © 2021 Courtesy of Art Gallery Quilts LLC. All Rights Reserved.

ADDITIONAL BLENDERS FOR THIS PROJECT



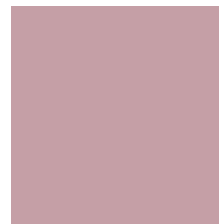
PE-488
BLOSSOMED



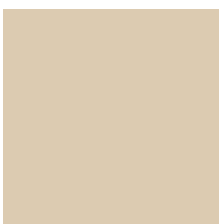
PE-502
FRESH SAGE



PE-508
TERRACOTTA TILE



PE-425
MAUVELOUS



PE-432
SANDSTONE



FINISHED SIZE | 70" x 70"

FABRIC REQUIREMENTS

Fabric A	LLP-56704	½ yd.
Fabric B	LLP-56702	½ yd.
Fabric C	LLP-56709	½ yd.
Fabric D	PE-488	½ yd.
Fabric E	LLP-56715	¼ yd.
Fabric F	PE-502	½ yd.
Fabric G	LLP-56706	½ yd.
Fabric H	LLP-56712	¼ yd.
Fabric I	LLP-567013	¼ yd.
Fabric J	LLP-56700	½ yd.
Fabric K	PE-508	¾ yd.
Fabric L	PE-425	¼ yd.
Fabric M	LLP-56707	¼ yd.
Fabric N	LLP-56705	¼ yd.
Fabric O	LLP-56711	¼ yd.
Fabric P	LLP-56703	¼ yd.
Fabric Q	PE-432	¼ yd.

BACKING FABRIC

LLP-56706 4 ½ yds (*Suggested*)

BINDING FABRIC

Fabric **K** PE-508 (*Included*)

CUTTING DIRECTIONS

¼" seam allowances are included.
WOF means width of fabric.

- Seven (7) 7⅞" squares from fabric **A**.
- Ten (10) 7⅞" squares from fabric **B**.
- Six (6) 7⅞" squares from fabric **C**.
- Seven (7) 7⅞" squares from fabric **D**.
- Five (5) 7⅞" squares from fabric **E**.
- Eight (8) 7⅞" squares from Fabric **F**.
- Six (6) 7⅞" squares from Fabric **G**.
- Five (5) 7⅞" squares from fabric **H**.
- Five (5) 7⅞" squares from fabric **I**.
- Six (6) 7⅞" squares from fabric **J**.
- Six (6) 7⅞" squares from fabric **K**.
- Five (5) 7⅞" squares from fabric **L**.
- Five (5) 7⅞" squares from fabric **M**.
- Five (5) 7⅞" squares from fabric **N**.
- Five (5) 7⅞" squares from fabric **O**.
- Five (5) 7⅞" squares from fabric **P**.
- Four (4) 7⅞" squares from fabric **Q**.

CONSTRUCTION

Sew all rights sides together with ¼" seam allowance.

HST construction

- Pair two (2) 7⅞" fabric squares, right sides facing each other.
- Draw a line diagonally corner to corner using a mechanical pencil or frixion pen.
- Stitch ¼" from each side of the drawn lines.
- Cut the pieces apart along the marked diagonal line.
- Press and trim to a 7½" square.

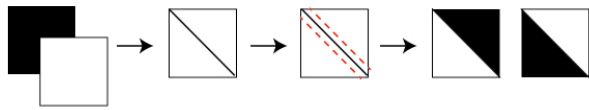
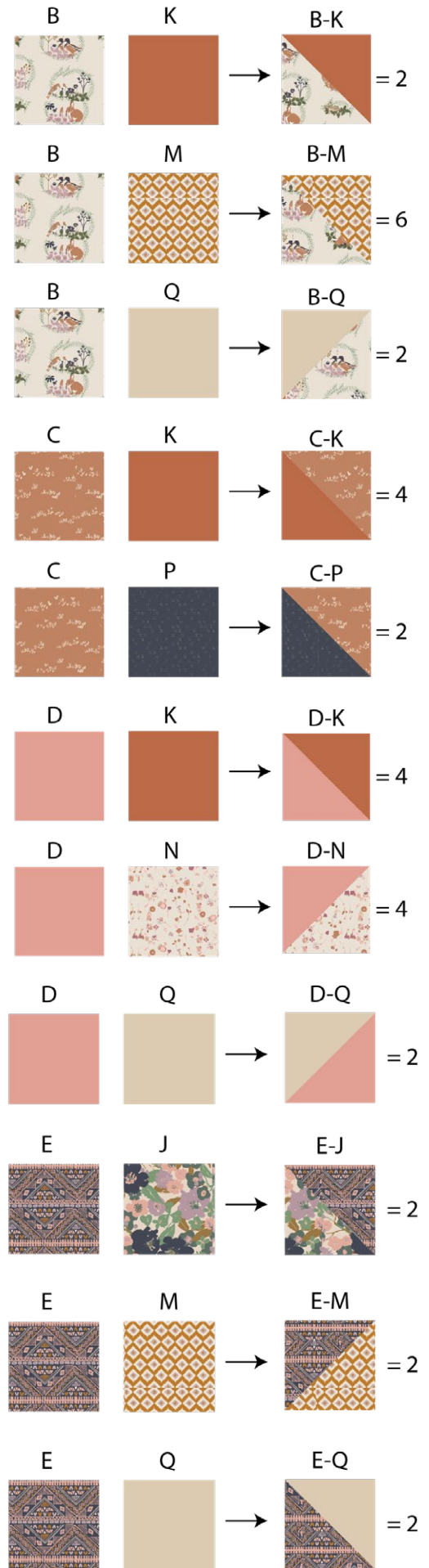
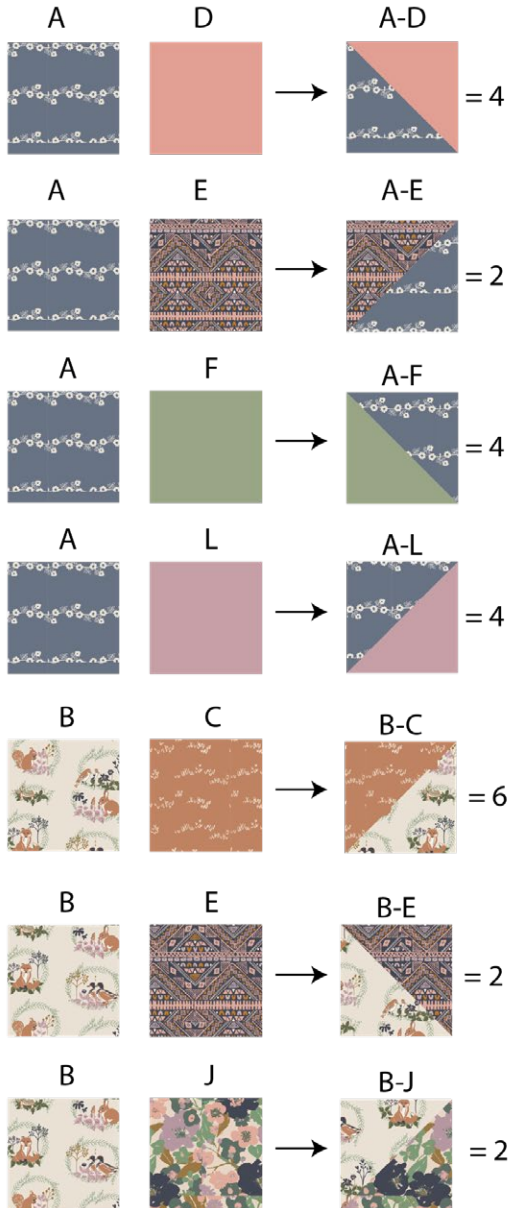


DIAGRAM 1

- Follow the diagrams below for each HST construction.



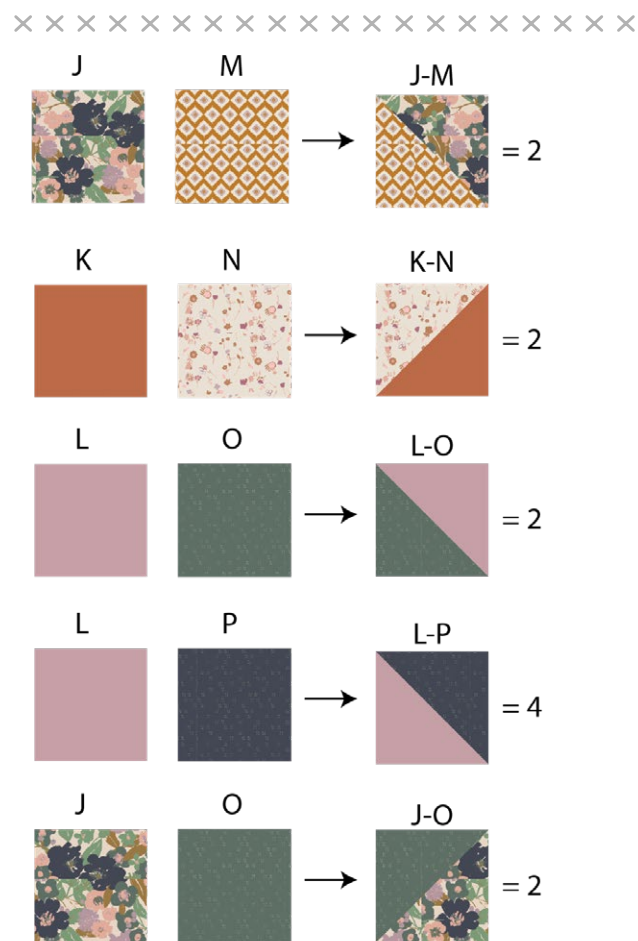
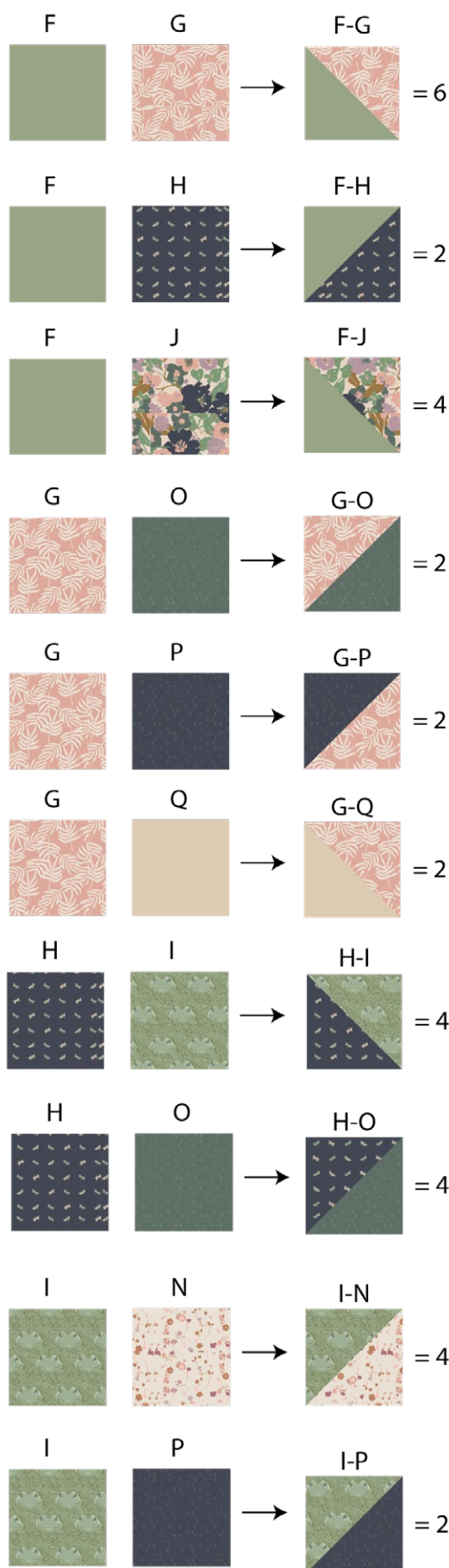


DIAGRAM 2

- To assemble your quilt top, join your hst by rows in the following order:
- Row 1: **B-C, A-D, B-E, F-G, H-I, B-J, D-K, A-I, B-M, B-C.**
- Row 2: **D-N, G-P, D-Q, F-H, A-E, I-N, C-K, L-O, J-M, D-N.**
- Row 3: **F-J, K-N, J-O, B-C, L-P, F-G, E-Q, A-D, H-I, F-J.**
- Row 4: **L-P, E-M, A-I, D-N, F-J, B-K, H-O, C-P, G-Q, L-P.**
- Row 5: **A-F, B-Q, M-P, G-O, B-M, B-C, A-F, E-J, D-K, A-F.**
- Row 6: **H-O, D-K, E-J, A-F, B-C, B-M, G-O, I-P, B-Q, H-O.**
- Row 7: **B-M, G-Q, C-P, H-O, B-K, F-J, D-N, A-I, E-M, B-M.**
- Row 8: **I-N, H-I, A-D, E-Q, F-G, L-P, B-C, J-O, K-N, I-N.**
- Row 9: **F-G, J-M, L-O, C-K, I-N, A-E, F-H, D-Q, G-P, F-G.**
- Row 10: **C-K, A-D, B-E, F-G, I-H, B-J, D-K, A-I, B-M, C-K.**

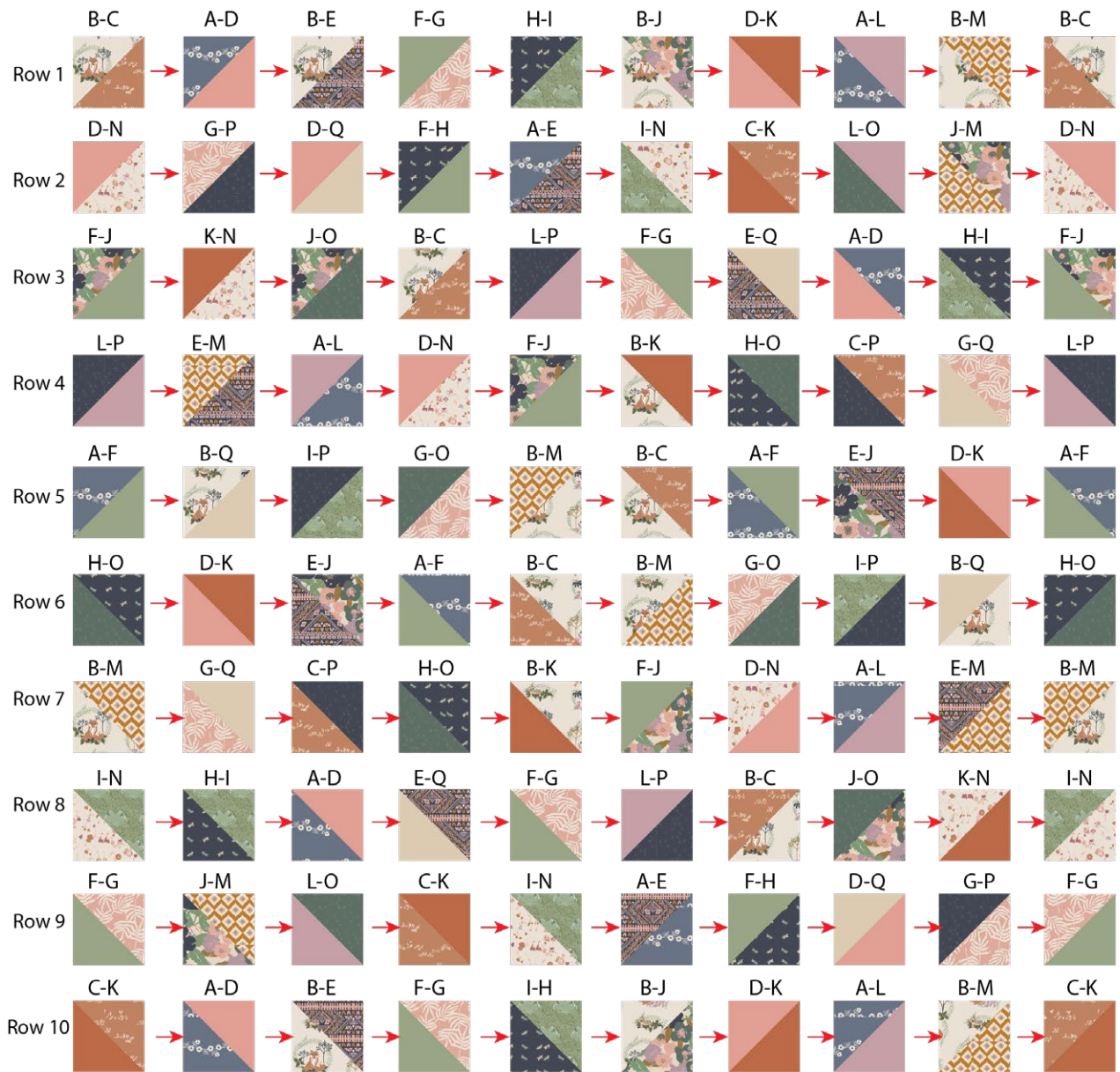


DIAGRAM 3

- Now, join rows 1 through 10.

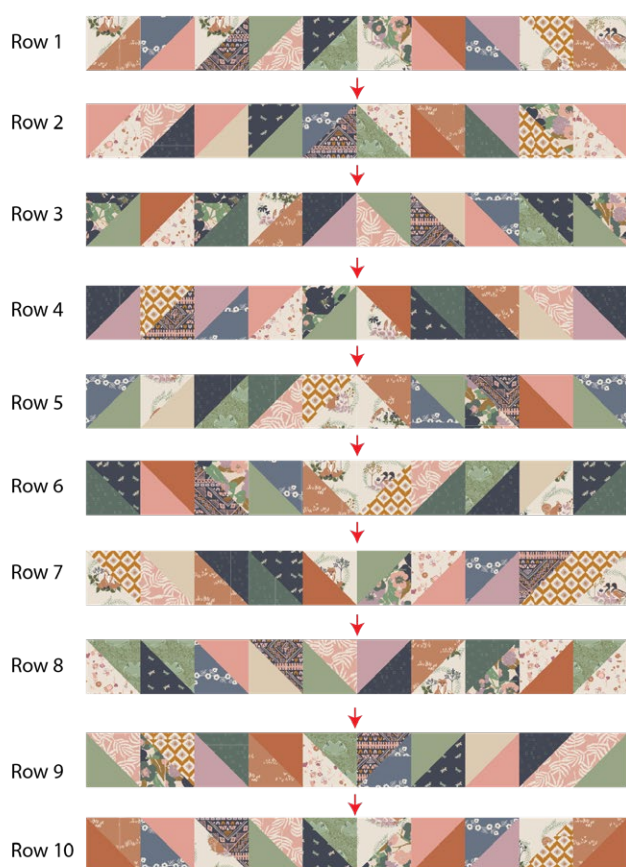


DIAGRAM 4

QUILT ASSEMBLY

Sew rights sides together.

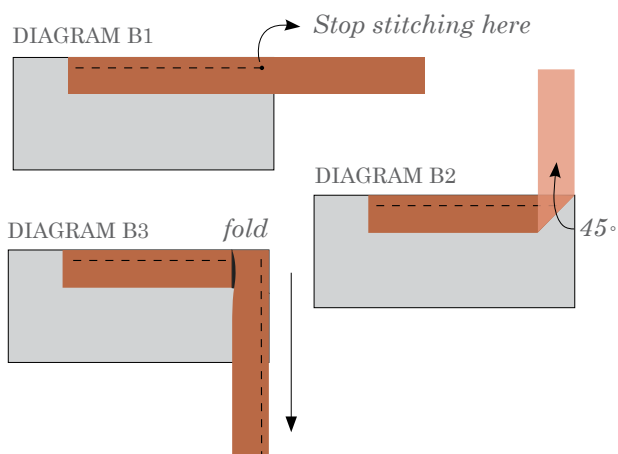
- Place BACKING FABRIC on a large surface wrong side up. Stretch it with masking tape against that surface.
- Place BATTING on top of backing fabric.
- Place TOP on top of the batting with right side facing up. Smooth away wrinkles using your hands.
- Pin all layers together and baste with basting thread, using long stitches. You can also use safety pins to join the layers.
- Machine or hand quilt starting at the center and working towards the corners. Remember that quilting motifs are a matter of personal preference. Have fun choosing yours!
- After you finished, trim excess of any fabric or batting, squaring the quilt to proceed to bind it.

BINDING

Sew rights sides together.

- Cut enough strips 1½" wide by the width of the fabric **K** to make a final strip 290" long. Start sewing the binding strip in the middle of one of the sides of the quilt, placing the strip right side down and leaving an approximated 5" tail. Sew with ¼" seam allowance (using straight stitch), aligning the strip's raw edge with the quilt top's raw edge.
- Stop stitching ¼" before the edge of the quilt (DIAGRAM B 1). Clip the threads. Remove the quilt from under the machine presser foot. Fold the strip in a motion of 45° and upward, pressing with your fingers (DIAGRAM B2). Hold this fold with your finger, bring the strip down in line with the next edge, making a horizontal fold that aligns with the top edge of the quilt (DIAGRAM B3). Start sewing at ¼" of the border, stitching all the layers. Do the same in the four corners of the quilt.

- Stop stitching before you reach the last 5 or 6 inches. Cut the threads and remove the quilt from under the machine presser foot. Lay the loose ends of the binding flat along the quilt edge, folding the ends back on themselves where they meet. Press them together to form a crease. Using this crease as the stitching line, sew the two open ends of the binding with right sides together (you can help yourself marking with a pencil if the crease is difficult to see).
- Trim seam to $\frac{1}{4}$ " and press open. Complete the sewing. Turn binding to back of the quilt, turn raw edge inside and stitch by hand using blind stitch.



XXXXXXXXXXXXXXXXXXXXXXXXXXXXXXXXXXXX

*Congratulations
& enjoy*

XXXXXXXXXXXXXXXXXXXXXXXXXXXXXXXXXXXX



artgalleryfabrics.com

NOTE: While all possible care has been taken to ensure the accuracy of this pattern, We are not responsible for printing errors or the way in which individual work varies.

Please read instructions carefully before starting the construction of this quilt. If desired, wash and iron your fabrics before starting to cut.

© 2021 Courtesy of Art Gallery Quilts LLC. All Rights Reserved.