

XXXXXX

A top-down view of a colorful striped and geometric patterned rug laid on a textured brown surface. An open book with text is placed on the left side of the rug, and a pair of brown leather sandals is placed on the right side.

XXXXXXXXXXXXXXXXXXXXXXXXXXXX



Tambo

QUILT DESIGNED BY AGFstudio

ANDINA
△△△△

FABRICS DESIGNED BY AGF STUDIO



AND-63703
VIBRANT FRAZADA



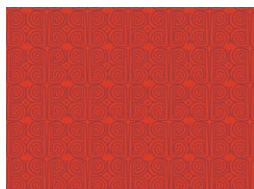
AND-63713
MUNAY TIES



AND-63715
MACHU PICCHU



AND-63712
NAZCA LINES



AND-63710
CRIMSON CHUSI



AND-63708
INCAN TOOLS CLAY

ADDITIONAL BLENDERS FOR THIS PROJECT



DEN-S-2000
WICKED SKY



FEEL THE DIFFERENCE © 2021 Courtesy of Art Gallery Quilts LLC. All Rights Reserved.

Tambo

FINISHED SIZE | 34" x 16"

FABRIC REQUIREMENTS

Fabric A	AND-63703	½ yd.
Fabric B	AND-63713	¼ yd.
Fabric C	AND-63715	⅝ yd.
Fabric D	AND-63712	¼ yd.
Fabric E	AND-63710	¼ yd.
Fabric F	AND-63708	¼ yd.
Fabric G	DEN-S-2000	¼ yd.

BACKING FABRIC
AND-63715 *(Included)*

ADDITIONAL MATERIALS:
Non-Slip Indoor Rug Pad *(Optional)*
Fringe Tassel Trim *(Optional)*

CUTTING DIRECTIONS

¼" seam allowances are included.
WOF means width of fabric.

Fabric **A**

- One (1) 20½" x 16½" rectangle.

Fabric **B**

- Two (2) 16½" x 1½" strips.

Fabric **C**

- Two (2) 16½" x 2½" strips.
- One (1) 34½" x 16½" rectangle

Fabric **D**

- Eight (8) 4½" x 2½" fussy cut rectangles.

Fabric **E**

- Sixteen (16) 2½" squares.

Fabric **F**

- Two (2) 16½" x 1½" strips.

Fabric **G**

- Two (2) 16½" x 1½" strips.

CONSTRUCTION

Sew all rights sides together with ¼" seam allowance.

Flying Geese

- Place a 2½" square from fabric **E** to the right edge of one (1) 4½" x 2½" rectangle from fabric **D**, mark a diagonal line from the top left corner to the bottom right corner, sew through the line and trim ¼" away from the seam. Press.
- Now place another 2½" square from fabric **E** and place it to the left edge of the sewn piece, mark a diagonal line from the top right corner to the bottom left corner, sew through the line and trim ¼" away from the seam. Press.
- Repeat this step to make a total of eight (8) **EDE** flying geese.

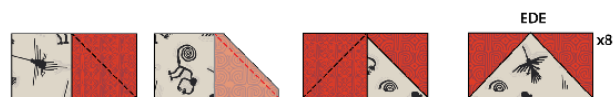


DIAGRAM 1

- Sew four (4) **EDE** flying geese as shown on diagram below. Repeat this step one more time.



DIAGRAM 2

- Sew strips from fabrics **A**, **B**, **C**, **G**, **F** and **EDE** flying geese, as shown on diagram below.

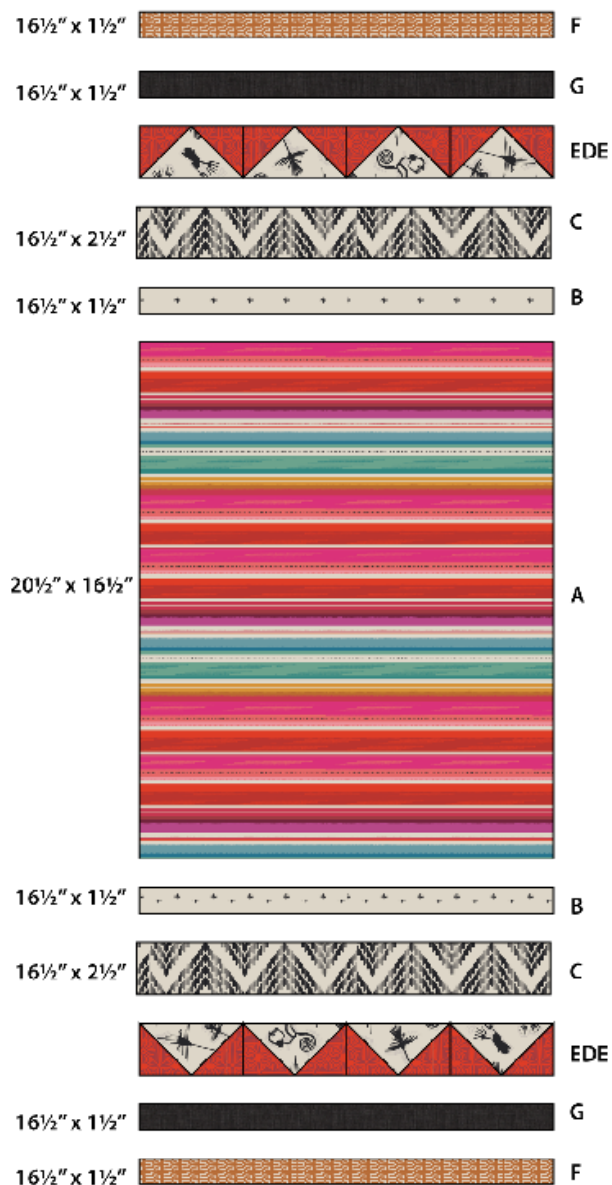


DIAGRAM 3

- Quilt as desired.

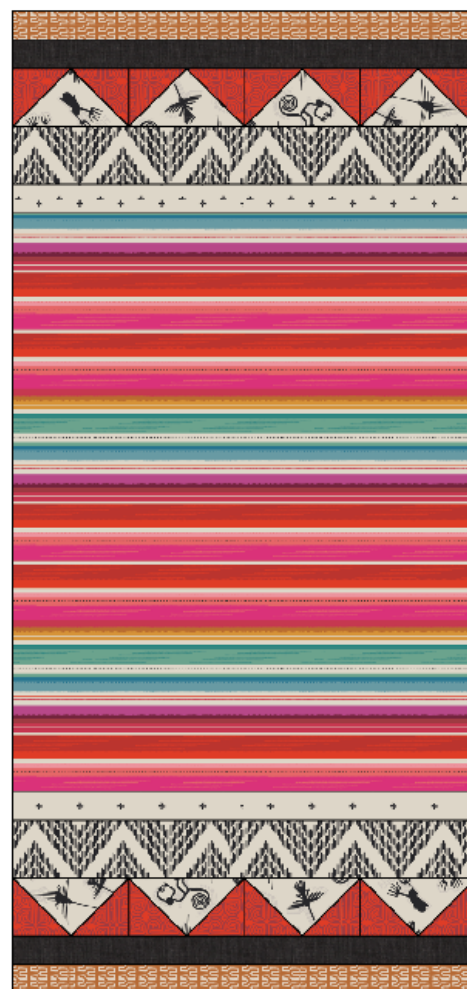


DIAGRAM 4

- Place the quilted piece with one (1) $34\frac{1}{2}$ " x $16\frac{1}{2}$ " rectangle from fabric **C** right sides facing together.
- Sew all around it leaving around 3" opening to turn the piece inside out and edge stitch the opening.
- Cut a 33" x 15" of Non-Slip Indoor Rug Pad and place it under your rug.

XXXXXXXXXXXXXXXXXXXXXXXXXXXXXXXXXXXX

*Congratulations
& enjoy*

XXXXXXXXXXXXXXXXXXXXXXXXXXXXXXXXXXXX



artgalleryfabrics.com

NOTE: While all possible care has been taken to ensure the accuracy of this pattern, We are not responsible for printing errors or the way in which individual work varies.

Please read instructions carefully before starting the construction of this quilt. If desired, wash and iron your fabrics before starting to cut.