

X  
X  
X  
X  
X  
X  
X  
X  
X  
X  
X  
X

## A person is holding a large, colorful, quilted bag with a geometric pattern and a fringe. The bag features a mix of yellow, blue, and white quilted sections, with a central panel of vibrant, multi-colored geometric patterns. The bag has a wide, flat top and a long, fringed strap. The person is wearing black leggings and is standing outdoors on a wooden bench, with a blurred background of green foliage and a palm tree.

XXXXXXXXXXXXXXXXXXXXXXXXXXXX



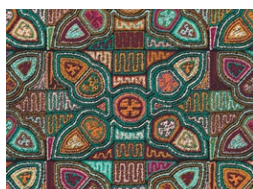


Sammi

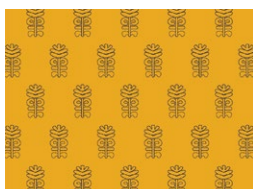
DESIGNED BY AGFstudio

ANDINA  
△△△△

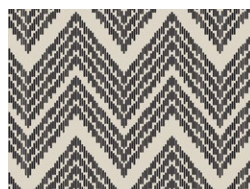
FABRICS DESIGNED BY AGF STUDIO



AND-63700  
FLOWERING MOLAS



AND-63707  
GOLDEN HUACA



AND-63715  
MACHU PICCHU

## ADDITIONAL BLENDERS FOR THIS PROJECT



PE-439  
RASPBERRY ROSE



PE-418  
TILE BLUE



PE-486  
VANILLA CUSTARD



FEEL THE DIFFERENCE © 2021 Courtesy of Art Gallery Quilts LLC. All Rights Reserved.

# Sami

FINISHED SIZE | 18" x 12½"

## FABRIC REQUIREMENTS

Fabric <b>A</b>	AND-63700	⅝ yd.
Fabric <b>B</b>	AND-63707	¾ yd.
Fabric <b>C</b>	PE-439	¼ yd.
Fabric <b>D</b>	PE-418	Fat 8.
Fabric <b>E</b>	PE-486	⅞ yd.
Fabric <b>F</b>	AND-63715	¾ yd.

### BINDING FABRIC

Fabric **E** AND-63715 (Included)

### Additional Materials

- Fusible interfacing
- 18"-20" zipper.

## CUTTING DIRECTIONS

¼" seam allowances are included.  
WOF means width of fabric.

- One (1) 10½" x 8" rectangle from fabric **A**.
- Two (2) 9½" x 4" rectangles from fabric **A**.
- Two (2) 6½" x 5" rectangles from fabric **A**.
- Two (2) 6" x 4" rectangles from fabric **A**.
- Two (2) 6½" x 3½" rectangles from fabric **A**.
- Two (2) 6" x 2½" rectangles from fabric **A**.
- One (1) 4" x 5" rectangle from fabric **A**.

- One (1) 8" x 1½" rectangle from fabric **A**.
- Two (2) Circle template from fabric **B**.
- Two (2) 8" x 7" rectangles from fabric **B**. (pocket)
- Two (2) 6½" x 2" rectangles from fabric **C**.
- One (1) 8" x 2" rectangle from fabric **C**.
- One (1) 4" x 3½" rectangle from fabric **C**.
- Two (2) 6" x 4" rectangles from fabric **D**.
- Two (2) Circle template from fabric **E**. (lining)
- One (1) 25" x 18" rectangle from fabric **E**. (lining)
- Two (2) 9½" x 4" rectangles from fabric **E**.
- One (1) 8" x 3" rectangle from fabric **E**.
- Two (2) 3½" x WOF strips from fabric **F**. (straps)

## CONSTRUCTION

Sew all rights sides together with ¼" seam allowance.

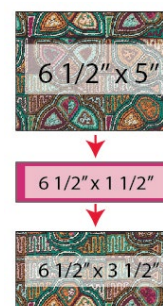
- Join one (1) 9½" x 4" rectangle from fabric **A** with one (1) 9½" x 4" rectangle from fabric **E**.



Block 1

DIAGRAM 1

- Take one (1) 6½" x 5" rectangle from fabric **A**, one (1) 6½" x 3½" rectangle from fabric **A** and one (1) 6½" x 1½" rectangle from fabric **C** and join them following the diagram below.



Block 2

DIAGRAM 2

- Join one (1) 6" x 4" rectangle from fabric **D** with one (1) 6" x 2½" rectangle from fabric **A**.



DIAGRAM 3

- Then, take one (1) 6" x 4" rectangle from fabric **A** and join it on the bottom of the assemble unit.

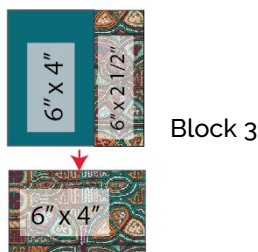


DIAGRAM 4

- Now, join Blocks 1, 2 and 3.



DIAGRAM 5

- Join one (1) 8" x 3" rectangle from fabric **E** with one (1) 8" x 1½" rectangle from fabric **A**.

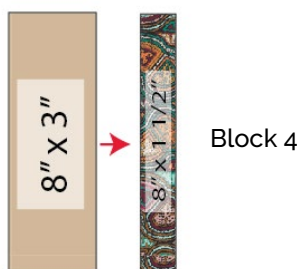


DIAGRAM 6

- Join one (1) 4" x 3½" rectangle from fabric **C** with one (1) 4" x 5" rectangle from fabric **A**.

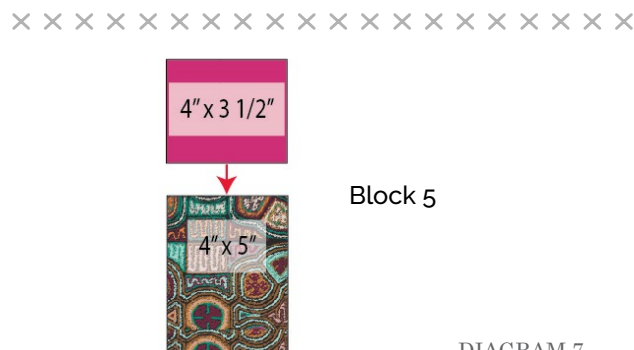


DIAGRAM 7

- Join one (1) 10½" x 8" rectangle from fabric **A** with one (1) 8" x 2" rectangle from fabric **C**.

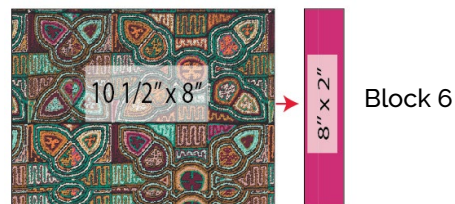


DIAGRAM 8

- Join Blocks 4, 5 and 6.



DIAGRAM 9

- Join one (1) 6" x 2½" rectangle from fabric **A** with one (1) 6" x 4" rectangle from fabric **D**.



DIAGRAM 10

- Then, take one (1) 6" x 4" rectangle from fabric D and join it on the top of the assemble unit.

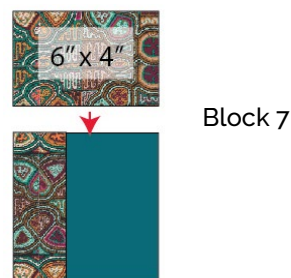


DIAGRAM 11



- Take one (1)  $6\frac{1}{2}$ " x  $3\frac{1}{2}$ " rectangle from fabric **A**, one (1)  $6\frac{1}{2}$ " x 5" rectangle from fabric **A** and one (1)  $6\frac{1}{2}$ " x  $1\frac{1}{2}$ " rectangle from fabric **C** and join them following the diagram below.

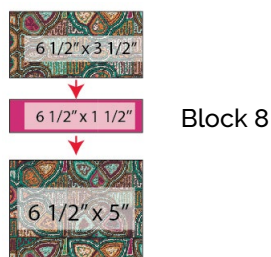


DIAGRAM 11

- Join one (1)  $9\frac{1}{2}$ " x 4" rectangle from fabric **A** with one (1)  $9\frac{1}{2}$ " x 4" rectangle from fabric **E**.

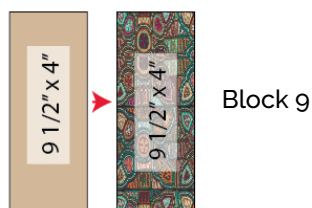


DIAGRAM 12

- Join Blocks 7, 8 and 9.



DIAGRAM 13

- Now, join rows 1, 2 and 3.
- Trim the main piece to 18" x 25".

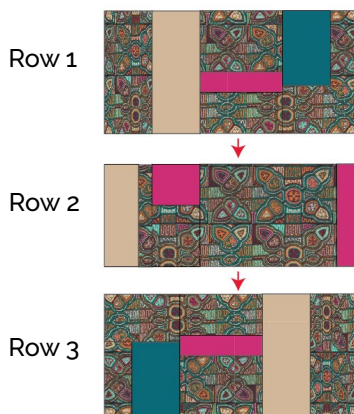


DIAGRAM 14

## Creating the traps:

- Take two (2)  $3\frac{1}{2}$ " x WOF" strips from fabric **F**, and place fusible interfacing on the wrong side of the fabric.
- Fold one of the strips in half lengthwise to create a crease in the center.
- Open them and fold the edges towards the center crease.
- Fold the folded edges and top stitch.
- Repeat the same for the other strip.

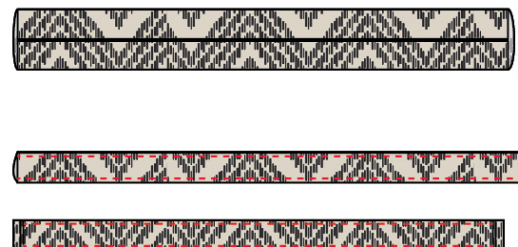


DIAGRAM 15

- Now, join both strips creating a long strap.
- Then join the two ends and sew closed in order to create a long loop.



DIAGRAM 16

## Assembling the Duffle bag:

- Take one 18" x 25" of interfacing and iron it on the wrong side of the main piece.
- Then, take the lining piece and place it right sides facing together.
- Sew all around leaving 5" of opening to turn inside out.
- Turn your piece inside out, sew the opening and set aside.

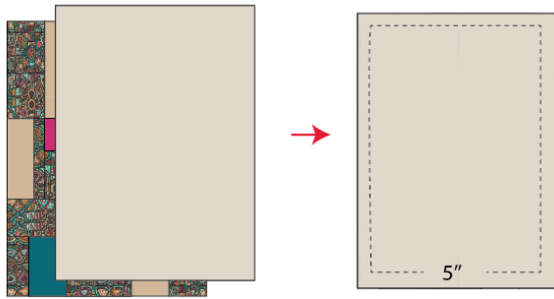


DIAGRAM 17

- Now, take your circle template pieces from fabric **B** and **E** (lining pieces) and place them right sides facing together.
- Sew all around, leaving about 3" of opening.
- Turn your piece inside out and close the opening.

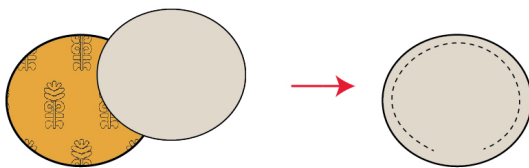


DIAGRAM 18

### Creating the pocket:

- Take two (2) 8" x 7" rectangles from fabric **B** and place them right sides facing.
- Sew all around leaving one side open.

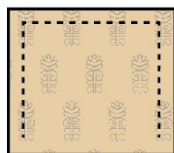


DIAGRAM 19

- Turn the piece inside out. Close the opening.
- Stitch a decorative line  $\frac{1}{4}$ " from the folded edge. This will ensure your lined drop-in pocket doesn't wrinkle or buckle during normal use.

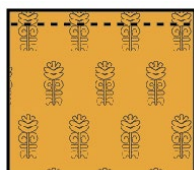


DIAGRAM 20

- Take the main piece and fold it in half and place the pocket on the middle of the folded main piece.
- Baste stitch the pocket with the main piece leaving the top of the pocket open.



DIAGRAM 21

- Center the straps in the middle of the main piece on the edge of the pocket piece. Pin.
- Sew all the way around about 3" to 4" from the top of each side.
- Sew an X at the top of each side to make the straps more secure.

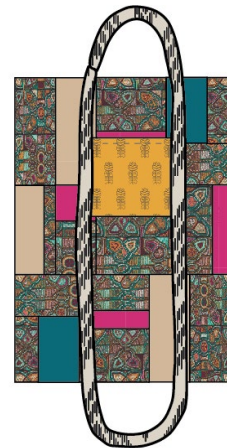


DIAGRAM 22

### Attaching the zipper:

- Place the zipper and the main piece, right sides facing together and sew the zipper.
- Then, sew the other end and top stitch the zipper.



DIAGRAM 23

- 

100

XXXXXXXXXXXXXXXXXXXXXXXXXXXXXXXXXXXX

*Congratulations  
& enjoy*

XXXXXXXXXXXXXXXXXXXXXXXXXXXXXXXXXXXX




[artgalleryfabrics.com](http://artgalleryfabrics.com)

NOTE: While all possible care has been taken to ensure the accuracy of this pattern, We are not responsible for printing errors or the way in which individual work varies.

Please read instructions carefully before starting the construction of this quilt. If desired, wash and iron your fabrics before starting to cut.





artgalleryfabrics.com

