

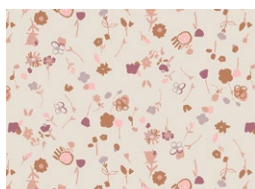
## A close-up photograph of a handmade quilt square. The square features a complex geometric pattern with a central star or 'X' design made of dark blue fabric. The background is composed of light pink and white fabric with floral and abstract patterns. Several decorative patches are sewn onto the quilt: two red squares with white centers and two green hexagons with red centers. The quilt is bordered by a wide orange fabric strip. In the background, other quilt materials are visible, including a blue fabric with white floral patterns and a piece of light-colored fabric with a grid pattern. A small, fluffy, light-colored object is also visible in the upper left corner.

# Let's Play

DESIGNED BY AGFstudio



FABRICS DESIGNED BY SHARON HOLLAND



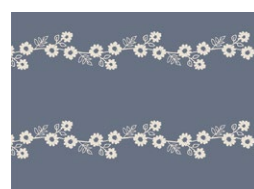
LLP-56705  
BUDDING ARTIST



LLP-56706  
FERNGULLY



LLP-56703  
TWINKLE TWINKLE GALAXY



LLP-56704  
DAISY CHAIN

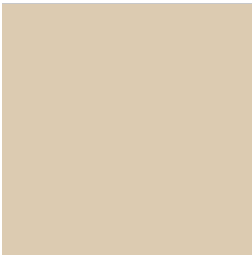


FEEL THE DIFFERENCE © 2021 Courtesy of Art Gallery Quilts LLC. All Rights Reserved.

ADDITIONAL BLENDERS FOR THIS PROJECT



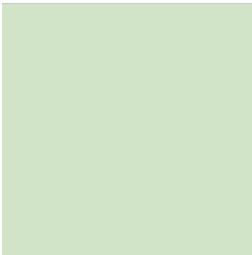
PE-508  
TERRACOTTA TILE



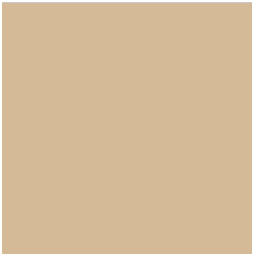
PE-432  
SANDSTONE



PE-502  
FRESH SAGE



PE-443  
SWEET MINT



PE-486  
VANILLA CUSTARD



PE-485  
RAW GOLD

# Let's Play

FINISHED SIZE | 12" x 12", 15" x 18"

## FABRIC REQUIREMENTS

Fabric <b>A</b>	LLP-56705	Fat 8.
Fabric <b>B</b>	LLP-56706	Fat 8.
Fabric <b>C</b>	LLP-56703	½ yd.
Fabric <b>D</b>	PE-508	Fat 8.
Fabric <b>E</b>	PE-432	Fat 8.
Fabric <b>F</b>	PE-502	Fat 8.
Fabric <b>G</b>	LLP-56704	⅝ yd.
Fabric <b>H</b>	PE-486	½ yd.
Fabric <b>I</b>	PE-485	⅛ yd.

### BACKING FABRIC

Game board: LLP-56703 ½ yd (*Suggested*)

### BINDING FABRIC

Game board: Fabric **I** PE-485 (*Included*)

Pouch: Fabric **G** LLP-56705 (*Included*)

## CUTTING DIRECTIONS

¼" seam allowances are included.  
WOF means width of fabric.

- Five (5) 4" squares from fabric **A**.
- Four (4) 4" squares from fabric **B**.
- Six (6) 4" x 1¼" rectangles from fabric **C**.
- Two (2) 12½" x 1¼" strips from fabric **C**.
- Ten (10) template 1 from fabric **D**.
- Five (5) template 4 from fabric **D**.
- Five (5) template 2 from fabric **E**.
- Ten (10) template 3 from fabric **F**.
- One (1) 17" x 20" rectangle from fabric **G**.
- One (1) 17" x 20" rectangle from fabric **H**.

## CONSTRUCTION

Sew all rights sides together with ¼" seam allowance.

### Board construction:

#### Row 1:

- Take two (2) 4" squares from fabric **A**, one (1) 4" square from fabric **B** and two (2) 4" x 1¼" rectangles from fabric **C** and join them in the following order: **A-C-B-C-A**.



DIAGRAM 1

#### Row 3:

- Take two (2) 4" squares from fabric **B**, one (1) 4" square from fabric **A** and two (2) 4" x 1¼" rectangles from fabric **C** and join them in the following order: **B-C-A-C-B**.



DIAGRAM 2

Row 5:

- Take two (2) 4" squares from fabric **A**, one (1) 4" square from fabric **B** and two (2) 4" x 1¼" rectangles from fabric **C** and join them in the following order: **A-C-B-C-A**.



DIAGRAM 3

- Take two (2) 12½" x 1¼" strips from fabric **C** and join each row following the diagram below.

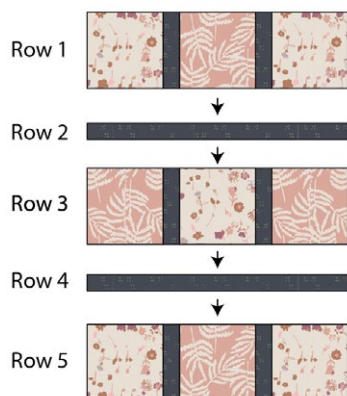


DIAGRAM 4

- Quilt as desired.
- Follow the binding instruction at the binding section.

#### Board chips construction:

- Take template 1 fabric **D** and template 2 fabric **E** pieces.
- Place template 2 from fabric **E** on top of template 1, wrong side facing the right side of template 1 from fabric **D** and top stitch the edges.



DIAGRAM 5

- Take another template 1 piece from fabric **D** and place them right sides facing.
- Sew all around leaving about 2" of opening.
- Flip inside out and handstitch the opening.
- Repeat four (4) more times, to have a total of five (5) game chips.

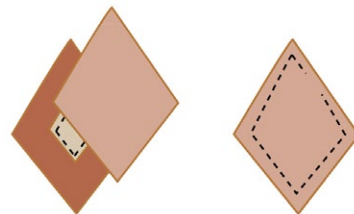


DIAGRAM 6

- Take template 3 from fabric **F** and template 4 from fabric **E**.
- Place template 4 on top of fabric **F**, wrong side facing down, and top stitch.

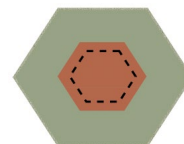


DIAGRAM 7

- Take another template 3 piece from fabric **F** and place it right sides facing.
- Sew all around leaving about 2" of opening.
- Flip inside out and handstitch the opening.
- Repeat four (4) more times, to have a total of five (5) game chips.

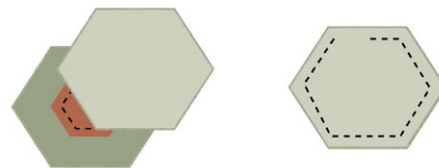


DIAGRAM 8

## Pouch construction:

- Layer fabric **G** 17" x 20" rectangle, batting and 17" x 20" rectangle from fabric **H**.
- Quilt as desired and trim the piece to 15" x 18".

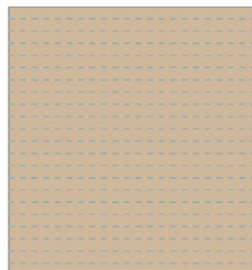


DIAGRAM 9

- Now, take your binding strips and bind on the bottom part of the quilted piece.

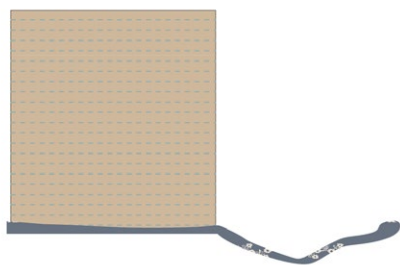


DIAGRAM 10

- Fold your piece 6" from the bottom.
- Bind the three sides.
- Now you have your pouch to store the tic-tac-toe game!

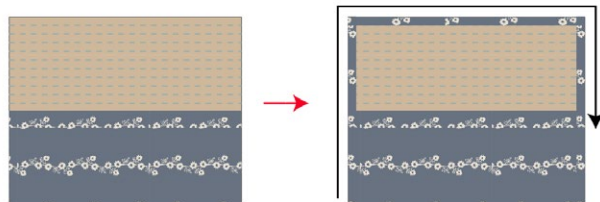


DIAGRAM 11

## BOARD ASSEMBLY

*Sew rights sides together.*

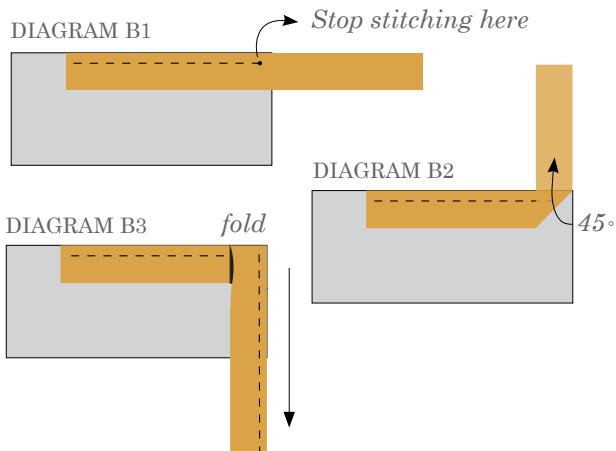
- Place BACKING FABRIC on a large surface wrong side up. Stretch it with masking tape against that surface.
- Place BATTING on top of backing fabric.
- Place TOP on top of the batting with right side facing up. Smooth away wrinkles using your hands.
- Pin all layers together and baste with basting thread, using long stitches. You can also use safety pins to join the layers.
- Machine or hand quilt starting at the center and working towards the corners. Remember that quilting motifs are a matter of personal preference. Have fun choosing yours!
- After you finished, trim excess of any fabric or batting, squaring the board to proceed to bind it.

## BINDING

*Sew rights sides together.*

- Cut enough strips 1½" wide by the width of the fabric **I** to make a final strip 58" long. Start sewing the binding strip in the middle of one of the sides of the quilt, placing the strip right side down and leaving an approximated 5" tail. Sew with ¼" seam allowance (using straight stitch), aligning the strip's raw edge with the quilt top's raw edge.
- Stop stitching ¼" before the edge of the quilt (DIAGRAM B 1). Clip the threads. Remove the quilt from under the machine presser foot. Fold the strip in a motion of 45° and upward, pressing with your fingers (DIAGRAM B2). Hold this fold with your finger, bring the strip down in line with the next edge, making a horizontal fold that aligns with the top edge of the quilt (DIAGRAM B3). Start sewing at ¼" of the border, stitching all the layers. Do the same in the four corners of the quilt.

- Stop stitching before you reach the last 5 or 6 inches. Cut the threads and remove the quilt from under the machine presser foot. Lay the loose ends of the binding flat along the quilt edge, folding the ends back on themselves where they meet. Press them together to form a crease. Using this crease as the stitching line, sew the two open ends of the binding with right sides together (you can help yourself marking with a pencil if the crease is difficult to see).
- Trim seam to  $\frac{1}{4}$ " and press open. Complete the sewing. Turn binding to back of the quilt, turn raw edge inside and stitch by hand using blind stitch.



XXXXXXXXXXXXXXXXXXXXXXXXXXXXXXXXXXXX

*Congratulations  
& enjoy*

XXXXXXXXXXXXXXXXXXXXXXXXXXXXXXXXXXXX



[artgalleryfabrics.com](http://artgalleryfabrics.com)

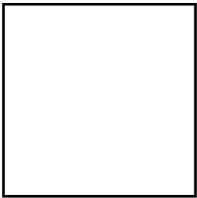
NOTE: While all possible care has been taken to ensure the accuracy of this pattern, We are not responsible for printing errors or the way in which individual work varies.

Please read instructions carefully before starting the construction of this quilt. If desired, wash and iron your fabrics before starting to cut.

© 2021 Courtesy of Art Gallery Quilts LLC. All Rights Reserved.

TEMPLATES

Printer Test



1" square

