

A square pillow with a light beige background, featuring four vertical columns of colorful, geometric, triangular patterns. The patterns are arranged in a way that creates a sense of depth and movement. The pillow is resting on a wooden stool against a textured, brown wall.

Arrow

DESIGNED BY AGF STUDIO

decostitch Elements

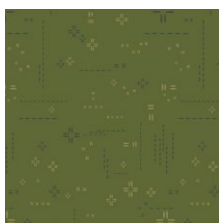
FABRICS DESIGNED BY ART GALLERY FABRICS



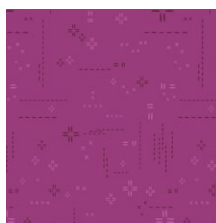
DECOSTITCH



DSE-715
CAFE LATTE



DSE-705
MORNING MOSS



DSE-707
ORCHIDBERRY



DSE-72
CORAL ROSE



DSE-716
TEAL FOG



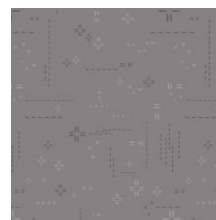
DSE-723
SUBTLE SAGE



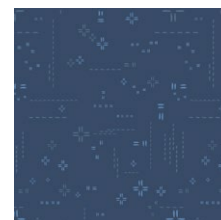
DSE-710
BLUE MINERALE



DSE-700
CLOUD



DSE-703
GRANITE



DSE-708
INDIGO SKY



DSE-714
PECAN PRALINE



DSE-704
SHADOW



DSE-711
BORGOGNA



DSE-709
STELLAR



DSE-706
SUNGLOW



DSE-722
GOLDEN EARTH



FEEL THE DIFFERENCE © 2021 Courtesy of Art Gallery Quilts LLC. All Rights Reserved.

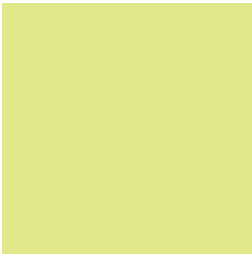
ADDITIONAL BLENDERS FOR THIS PROJECT



PE-421
HONEY



PE-485
RAW GOLD



PE-409
LIGHT CITRON



DEN-S-2006
ADOBE CLAY

Arrow

FINISHED SIZE | 18" x 18"

FABRIC REQUIREMENTS

Fabric A	DSE-715	1 yd.
Fabric B	DSE-705	$\frac{1}{8}$ yd.
Fabric C	DSE-707	$\frac{1}{8}$ yd.
Fabric D	DSE-721	$\frac{1}{8}$ yd.
Fabric E	DSE-716	$\frac{1}{8}$ yd.
Fabric F	DSE-723	$\frac{1}{8}$ yd.
Fabric G	DSE-710	$\frac{1}{8}$ yd.
Fabric H	DSE-700	$\frac{1}{8}$ yd.
Fabric I	DSE-703	$\frac{1}{8}$ yd.
Fabric J	DSE-708	$\frac{1}{8}$ yd.
Fabric K	DSE-714	$\frac{1}{8}$ yd.
Fabric L	DSE-704	$\frac{1}{8}$ yd.
Fabric M	DSE-711	$\frac{1}{8}$ yd.
Fabric N	DSE-709	$\frac{1}{8}$ yd.
Fabric O	DSE-706	$\frac{1}{8}$ yd.
Fabric P	DSE-722	$\frac{1}{8}$ yd.
Fabric Q	PE-421	$\frac{1}{8}$ yd.
Fabric R	PE-409	$\frac{1}{8}$ yd.
Fabric S	PE-485	$\frac{1}{8}$ yd.
Fabric T	DEN-S-2006	$\frac{1}{8}$ yd.

BACKING FABRIC

Fabric **A** DSE-715. *(Included)*

CUTTING DIRECTIONS

$\frac{1}{4}$ " seam allowances are included.
WOF means width of fabric.

- One hundred and twelve (112) $1\frac{1}{2}$ " squares from fabric **A**.
- Five (5) $14\frac{1}{2}$ " x $2\frac{1}{2}$ " strips from fabric **A**.
- Two (2) $18\frac{1}{2}$ " x $2\frac{1}{2}$ " strips from fabric **A**.
- Three (3) $2\frac{1}{2}$ " x $1\frac{1}{2}$ " rectangles from fabric **B, C, D, E, F, G**.
- Four (4) $2\frac{1}{2}$ " x $1\frac{1}{2}$ " rectangles from fabric **H**.
- Three (3) $2\frac{1}{2}$ " x $1\frac{1}{2}$ " rectangles from fabric **I, J, K, L, M, N**.
- Four (4) $2\frac{1}{2}$ " x $1\frac{1}{2}$ " rectangles from fabric **O**.
- Two (2) $2\frac{1}{2}$ " x $1\frac{1}{2}$ " rectangles from fabric **P, Q**.
- Three (3) $2\frac{1}{2}$ " x $1\frac{1}{2}$ " rectangles from fabric **R, S, T**.

CONSTRUCTION

Sew all rights sides together with $\frac{1}{4}$ " seam allowance.

Flying Geese Construction:

- Place a $1\frac{1}{2}$ " square from fabric **A** to the right edge of a $2\frac{1}{2}$ " x $1\frac{1}{2}$ " rectangle from fabric **Q** mark a diagonal line from the top left corner to the bottom right corner of fabric **A** square, sew through the line, trim $\frac{1}{4}$ " away from the stitch line and press.
- Take another $1\frac{1}{2}$ " square from fabric **A** and place it to the left edge of the sewn piece, mark a diagonal line from the bottom left corner to the top right corner of fabric **A** square, sew through the line and trim $\frac{1}{4}$ " away from the stitch line, and press.
- Repeat this step one more time to get a total of two (2) **AQA** flying geese.

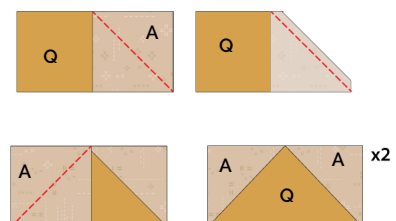


DIAGRAM 1

- Repeat the flying geese method to get the following combinations using $1\frac{1}{2}$ " squares from fabric **A** for all $2\frac{1}{2}$ " x $1\frac{1}{2}$ " rectangle from fabrics **B, C, D, E, F, G, H, I, J, K, L, M, N, O, P, R, S, T** rectangles.



DIAGRAM 2

- Divide all flying geese into four (4) columns and sew them as shown on diagram 3.

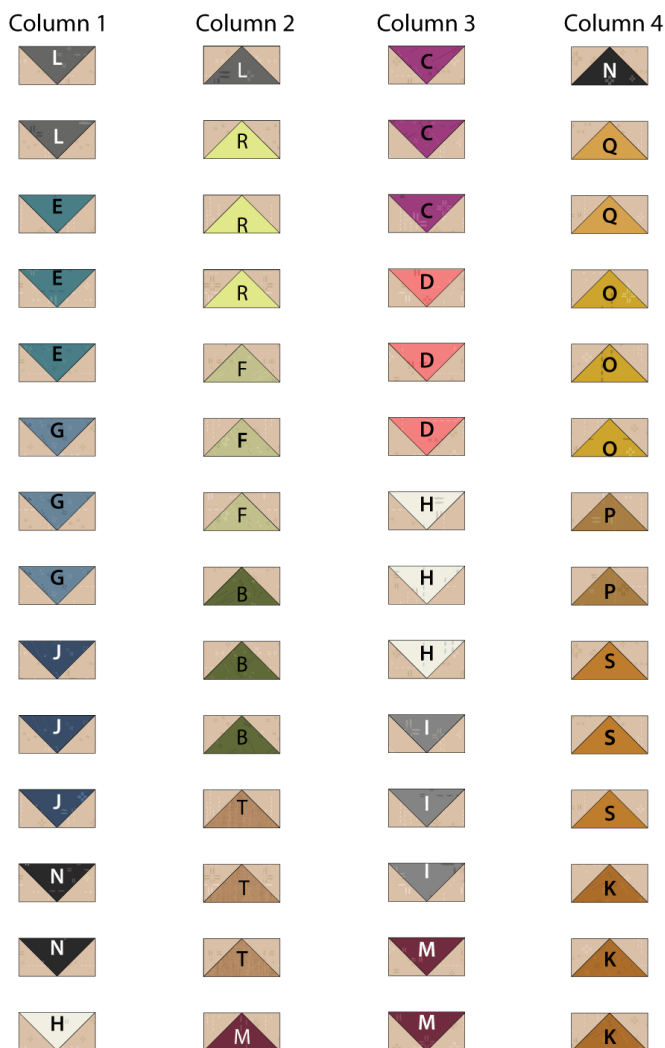


DIAGRAM 3

- Place one (1) $14\frac{1}{2}$ " x $2\frac{1}{2}$ " strip from fabric **A** in between each column. See diagram 4 for reference.

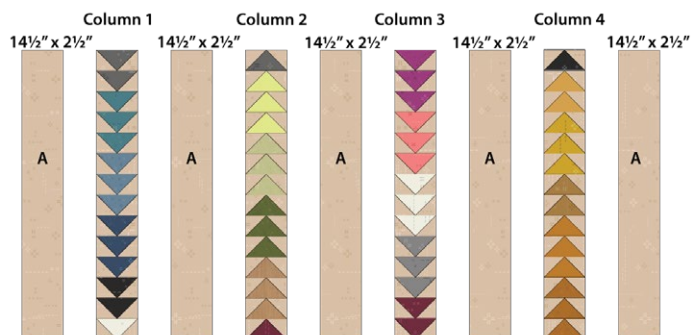


DIAGRAM 4

- Place one (1) $18\frac{1}{2}$ " x $2\frac{1}{2}$ " strip from fabric **A** at the top and bottom of the previously sewn piece.

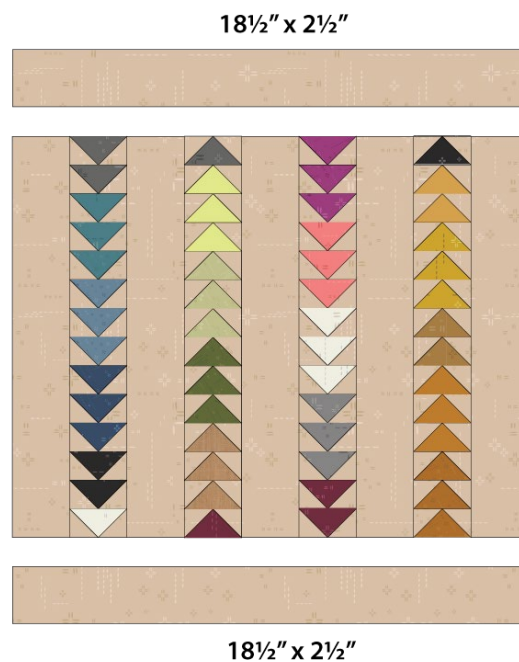


DIAGRAM 5

BACK OF THE PILLOW

*¼" seam allowances are included.
WOF means width of fabric.*

- Take both 13½" x 18½" rectangles from fabric **A**.
- Fold on the top edge ½" towards the wrong side of the fabric of one of the rectangle.
- Fold the same edge ½" again and edge stitch the fold in place to have a clean edge.
- Repeat the same but this time on the top edge of the other piece.
- Take the quilted pillow top and lay it flat right side up.
- Take one rectangle from fabric **A** and align it wrong side up to the right side of the pillow top.
- Take the other rectangle from fabric **A** and align it wrong side up to the left side of the pillow top.
- Pin the three pieces in place and sew around the edges at ¼".
- Clip the corners and flip the piece to the right side of the fabric.
- Fill the pillow with a 18" x 18" pillow form and enjoy!

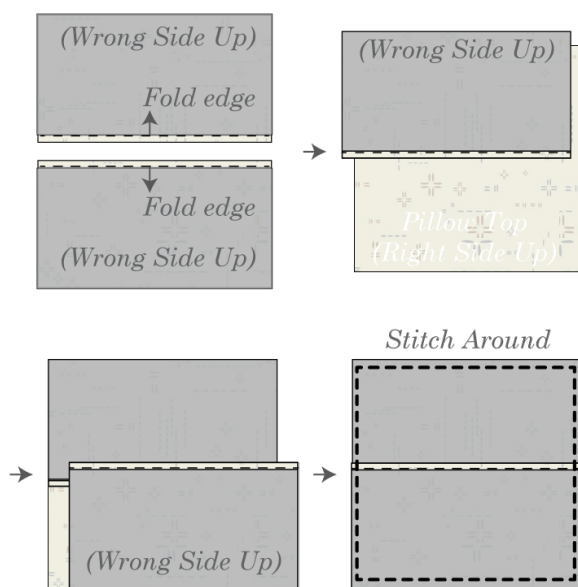


DIAGRAM 6

*Congratulations
& enjoy*



artgalleryfabrics.com

NOTE: While all possible care has been taken to ensure the accuracy of this pattern, We are not responsible for printing errors or the way in which individual work varies.

Please read instructions carefully before starting the construction of this quilt. If desired, wash and iron your fabrics before starting to cut.

© 2021 Courtesy of Art Gallery Quilts LLC. All Rights Reserved.