

X
X
X
X
X
X
X
X
X
X
X
X
X

A square quilted pillow with a complex geometric pattern. The design features a central diamond shape composed of various colorful fabrics, including floral, paisley, and solid colors like pink and blue. This central motif is surrounded by a wide border of light-colored, textured fabric. The entire pillow is set against a background of white wooden planks.

XXXXXXXXXXXXXXXXXXXX



XXXXXXXXXXXXXXXXXXXXXXXXXXXXXXXXXXXX

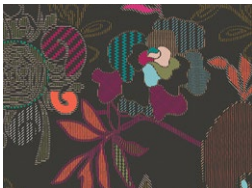
Tulum Pillow

DESIGNED BY PAT BRAVO



LEGENDARY

FABRICS DESIGNED BY PAT BRAVO



LGD-39700
STITCHED ANTHOMANIA BOLD



LGD-49704
FEMME METALE BOHO



LGD-39704
FEMME METALE BOLD



LGD-39703
BRIT BOUTIQUE BOLD

ADDITIONAL BLENDERS FOR THIS PROJECT



FE-536
FUCHSIA



FE-522
COOKIE DOUGH



Tulum Pillow

FINISHED SIZE | 28" x 28"

FABRIC REQUIREMENTS

Fabric A	LGD-39700	1 $\frac{5}{8}$ yd.
Fabric B	LGD-49704	$\frac{1}{4}$ yd.
Fabric C	LGD-39704	$\frac{1}{4}$ yd.
Fabric D	LGD-39703	$\frac{1}{4}$ yd.
Fabric E	FE-536	$\frac{1}{4}$ yd.
Fabric E	FE-522	$\frac{1}{2}$ yd.

BACKING FABRIC
LGD-39700 1 $\frac{5}{8}$ yds (Included)

CUTTING DIRECTIONS

$\frac{1}{4}$ " seam allowances are included.
WOF means width of fabric.

- Six (6) $4\frac{7}{8}$ " squares from fabric **A**.
- Four (4) $26\frac{1}{2}$ " x $2\frac{1}{2}$ " strips from fabric **A**.
- Four (4) $28\frac{1}{2}$ " x $3\frac{1}{2}$ " strips from fabric **A**.
- One (1) $28\frac{1}{2}$ " square from fabric **A**.
- Six (6) $4\frac{7}{8}$ " squares from fabric **B**.
- Two (2) $4\frac{7}{8}$ " squares from fabric **C**.
- Four (4) $4\frac{7}{8}$ " squares from fabric **D**.
- Two (2) $4\frac{7}{8}$ " squares from fabric **E**.
- Eight (8) $4\frac{7}{8}$ " squares from fabric **F**.
- Eight (8) $4\frac{1}{2}$ " squares from fabric **F**.

CONSTRUCTION

Sew all rights sides together with $\frac{1}{4}$ " seam allowance.

- This Floor Pillow is made out of five (5) different HST combinations, start making the different HST's following the diagram below.
- Combination 1 **A-F** =4
- Combination 2 **B-F** =8
- Combination 3 **E-B** =4
- Combination 4 **D-A** =8
- Combination 5 **C-F** =4



DIAGRAM 1

- Once you have all the HST's sewn, start building the rows, each row is made out of six (6) squares.
- Make two (2) of each row.

Row #1:

- **AF-F-BF-BF-F-AF.**



DIAGRAM 2

Row #2:

- **F-EB-DA-DA-EB-F.**



DIAGRAM 3

Row #3:

- **BF-DA-CF-CF-DA-BF.**

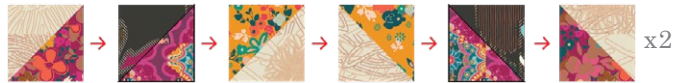


DIAGRAM 4

- Sew rows together in the order Row #1, Row #2, Row #3, Row #3, Row #2, Row #1.



DIAGRAM 5

- Grab one (1) 28½" x 2½" strip and sew it to the top side of the pillow top, leaving the left over tail towards the right side of the pillow.



DIAGRAM 6

- Take another 28½" x 2½" strip and sew it to the left side of the pillow top.



DIAGRAM 7

- Repeat the same steps at the bottom and right side with the remaining 28½" x 2½" strips.



DIAGRAM 8

- Take four (4) 28 ½" x 3 ½" strips and sew them together.
- You should end up with a 112" strip.



DIAGRAM 9

- Take the 28 ½" square from fabric **A** and start sewing the 112" x 3½" strip all around it.



DIAGRAM 10

- Sew the pillow top on leaving approx a 3" opening to turn the pillow right side out.



DIAGRAM 11

- When the pillow is right side out, stuff it and hand stitch the 3" opening.
- Voila!



XXXXXXXXXXXXXXXXXXXXXXXXXXXXXXXXXXXX

Congratulations
& enjoy

XXXXXXXXXXXXXXXXXXXXXXXXXXXXXXXXXXXX



artgalleryfabrics.com

NOTE: While all possible care has been taken to ensure the accuracy of this pattern, We are not responsible for printing errors or the way in which individual work varies.

Please read instructions carefully before starting the construction of this quilt. If desired, wash and iron your fabrics before starting to cut.

© 2021 Courtesy of Art Gallery Quilts LLC. All Rights Reserved.