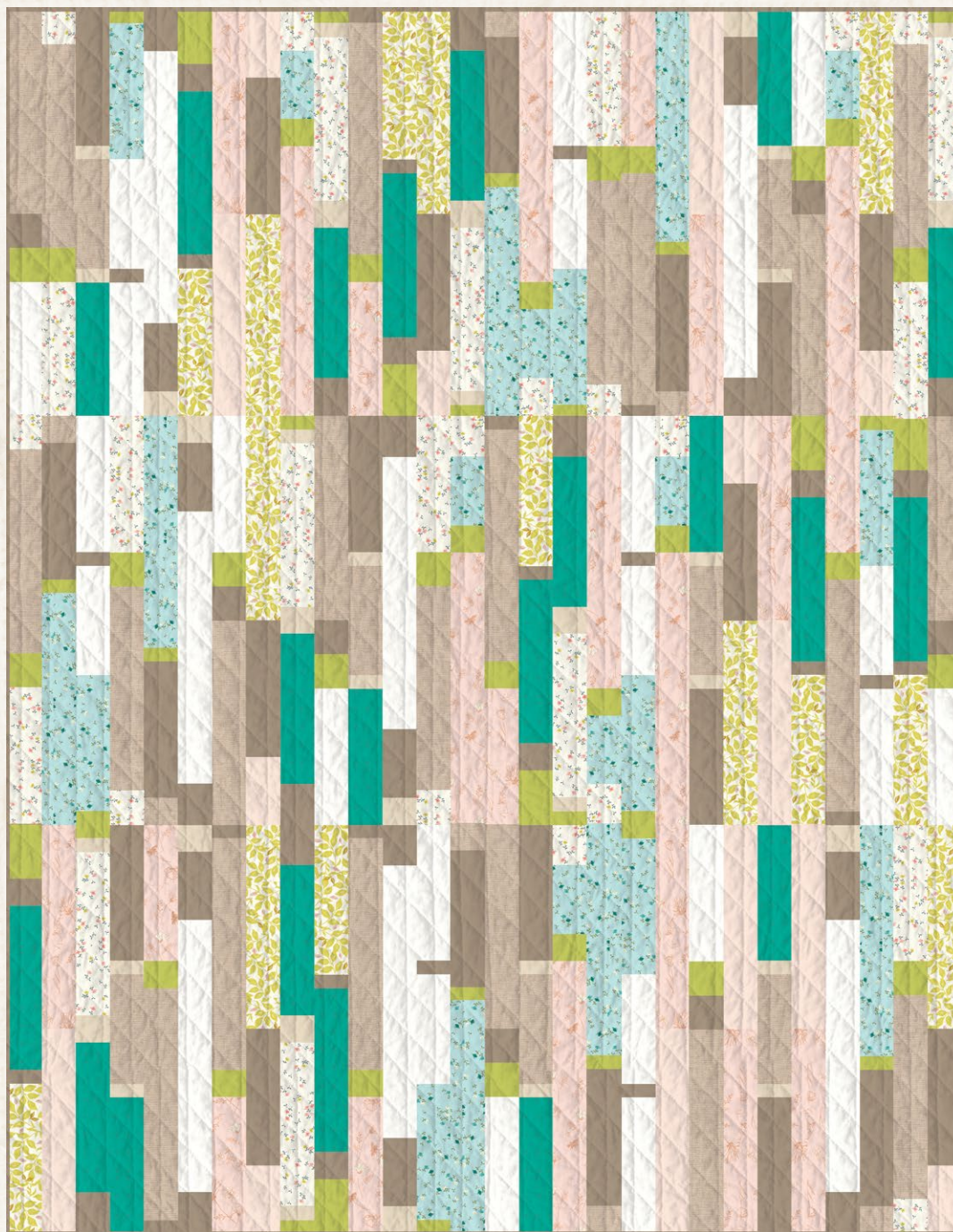


XXXXXX

Falling Rain



ANGLES

A DIVISION OF AGF

FREE PATTERN

XXXXXXXXXXXXXXXXXXXXXXXXXXXX

Falling Rain

QUILT DESIGNED BY AGFstudio



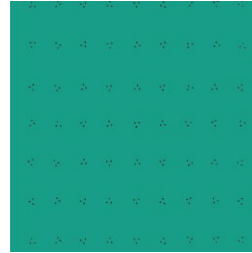
FABRICS DESIGNED BY AMY SINIBALDI



VLV-49654
HILLSIDE GUST



VLV-49656
OLIVIA DULCET



VLV-59652
INK VERT



VLV-59656
OLIVIA CELESTE



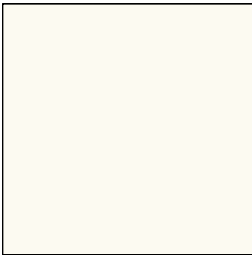
VLV-59657
WOODCUT SUNRISE



ADDITIONAL BLENDERS FOR THIS PROJECT



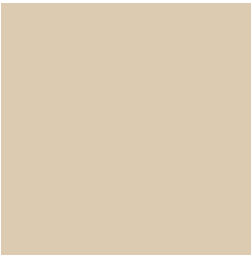
DEN-L-4000
SOFT SAND



PE-408
WHITE LINEN



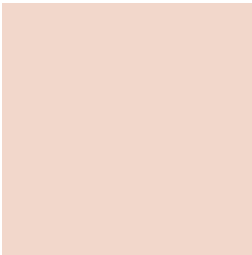
PE-423
APPLETONI



PE-432
SANDSTONE



PE-445
MINK



PE-471
SWEET MACADAMIA



FINISHED SIZE | 70" x 90"

FABRIC REQUIREMENTS

Fabric A	VLV-59656	$\frac{5}{8}$ yd.
Fabric B	DEN-L-4000	1 yd.
Fabric C	VLV-49656	$\frac{5}{8}$ yd.
Fabric D	VLV-59652	$\frac{3}{4}$ yd.
Fabric E	VLV-59657	$\frac{1}{2}$ yd.
Fabric F	PE-471	$\frac{1}{2}$ yd.
Fabric G	VLV-49654	$\frac{7}{8}$ yd.
Fabric H	PE-408	$\frac{7}{8}$ yd.
Fabric I	PE-445	$1\frac{3}{8}$ yd.
Fabric J	PE-423	$\frac{3}{8}$ yd.
Fabric K	PE-432	$\frac{1}{4}$ yd.

BACKING FABRIC
CAP-V-2002 $5\frac{1}{2}$ yd. (Suggested)

BINDING FABRIC
DEN-S-2000 (Fabric **I**) (Included)

CUTTING DIRECTIONS

$\frac{1}{4}$ " seam allowances are included.
WOF means width of fabric.

- One (1) $5\frac{1}{2}$ " x 21" strip from fabric **A**.
- One (1) $10\frac{1}{2}$ " x 21" rectangle from fabric **A**.
- One (1) $17\frac{1}{2}$ " x 21" rectangle from fabric **A**.
- One (1) $2\frac{1}{2}$ " x 21" strip from fabric **B**.
- One (1) $8\frac{1}{2}$ " x 21" rectangle from fabric **B**.

- Two (2) $15\frac{1}{2}$ " x 21" rectangle from fabric **B**.
- One (1) $17\frac{1}{2}$ " x 21" rectangle from fabric **B**.
- One (1) 3" x 21" strip from fabric **C**.
- One (1) $3\frac{1}{2}$ " x 21" strip from fabric **C**.
- One (1) $10\frac{1}{2}$ " x 21" rectangle from fabric **C**.
- One (1) $12\frac{1}{2}$ " x 21" rectangle from fabric **C**.
- One (1) $10\frac{1}{2}$ " x 21" rectangle from fabric **D**.
- One (1) $11\frac{1}{2}$ " x 21" rectangle from fabric **D**.
- One (1) $12\frac{1}{2}$ " x 21" rectangle from fabric **D**.
- One (1) $11\frac{1}{2}$ " x 21" rectangle from fabric **E**.
- One (1) $15\frac{1}{2}$ " x 21" rectangle from fabric **E**.
- One (1) $5\frac{1}{2}$ " x 21" strip from fabric **F**.
- One (1) $15\frac{1}{2}$ " x 21" rectangle from fabric **F**.
- One (1) $10\frac{1}{2}$ " x 21" rectangle from fabric **G**.
- One (1) $15\frac{1}{2}$ " x 21" rectangle from fabric **G**.
- One (1) $20\frac{1}{2}$ " x 21" rectangle from fabric **G**.
- One (1) $8\frac{1}{2}$ " x 21" rectangle from fabric **H**.
- Two (2) $10\frac{1}{2}$ " x 21" rectangles from fabric **H**.
- One (1) $20\frac{1}{2}$ " x 21" rectangle from fabric **H**.
- Three (3) $1\frac{1}{2}$ " x 21" strips from fabric **I**.
- One (1) 3" x 21" strip from fabric **I**.
- One (1) $2\frac{1}{2}$ " x 21" strip from fabric **I**.
- Two (2) $3\frac{1}{2}$ " x 21" strips from fabric **I**.
- One (1) $5\frac{1}{2}$ " x 21" strip from fabric **I**.
- Three (3) $10\frac{1}{2}$ " x 21" rectangles from fabric **I**.
- Three (3) $1\frac{1}{2}$ " x 21" strips from fabric **J**.
- Two (2) $2\frac{1}{2}$ " x 21" strips from fabric **J**.
- Two (2) 3" x 21" strips from fabric **J**.
- One (1) $4\frac{1}{2}$ " x 21" strip from fabric **J**.
- Three (3) $1\frac{1}{2}$ " x 21" strips from fabric **K**.
- Two (2) $2\frac{1}{2}$ " x 21" strips from fabric **K**.

CONSTRUCTION

Sew all rights sides together with ¼" seam allowance.

- Unit **a**: Take one (1) 15½" x 21" rectangle from fabric **B**, one (1) 3" x 21" strip from fabric **I**, one (1) 3" x 21" strip from fabric **J**, and one (1) 10½" x 21" rectangle from fabric **H**; and attach them in the same order.
- Once the units are completed, crosscut them into seven (7) 3" strips as shown in Diagram 1.

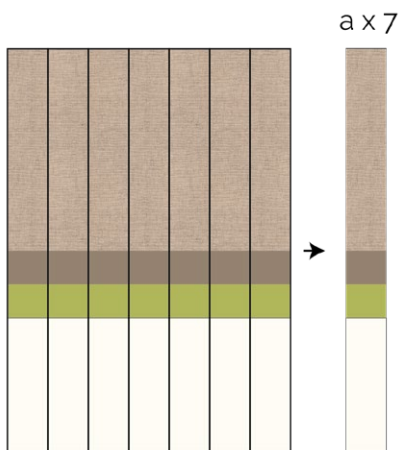


DIAGRAM 1

- Unit **b**: Take one (1) 3" x 21" strip from fabric **C**, one (1) 15½" x 21" rectangle from fabric **B**, one (1) 3" x 21" strip from fabric **J**, and one (1) 10½" x 21" rectangle from fabric **C**; and attach them in the same order.
- Once the units are completed, crosscut them into seven (7) 3" strips as shown in Diagram 2.

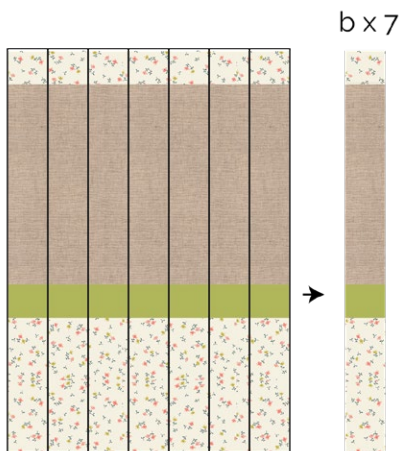


DIAGRAM 2

- Unit **c**: Take one (1) 10½" x 21" rectangle from fabric **I**, one (1) 1½" x 21" strip from fabric **K**, one (1) 8½" x 21" rectangle from fabric **B**, one (1) 1½" x 21" strip from fabric **K**, one (1) 10½" x 21" rectangle from fabric **D**; and attach them in the same order.
- Once the units are completed, crosscut them into seven (7) 3" strips as shown in Diagram 3.

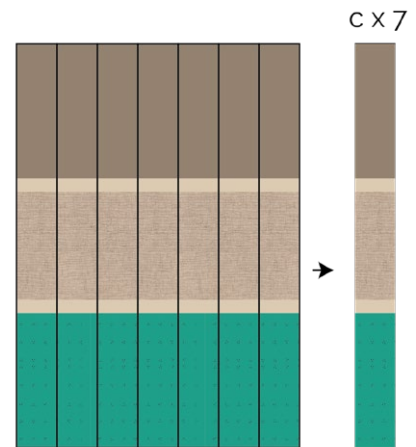


DIAGRAM 3

- Unit **d**: Take one (1) 1½" x 21" strip from fabric **J**, one (1) 10½" x 21" rectangle from fabric **A**, one (1) 8½" x 21" rectangle from fabric **H**, one (1) 1½" x 21" strip from fabric **I**, and one (1) 10½" x 21" rectangle from fabric **H**; and attach them in the same order.
- Once the units are completed, crosscut them into seven (7) 3" strips as shown in Diagram 4.

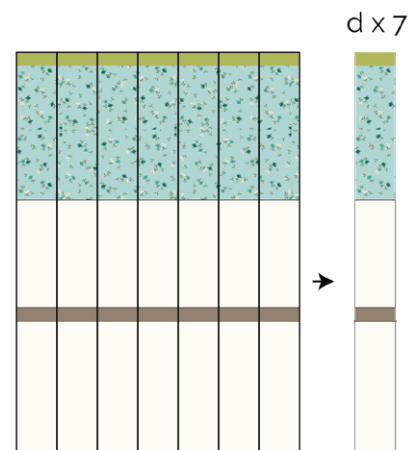


DIAGRAM 4

- DIAGRAM 8

- Unit **i**: Take one (1) $3\frac{1}{2}$ " x 21" strip from fabric **C**, one (1) $5\frac{1}{2}$ " x 21" strip from fabric **A**, one (1) $2\frac{1}{2}$ " x 21" strip from fabric **J**, and one (1) $20\frac{1}{2}$ " x 21" rectangle from fabric **G**; and attach them in the same order.
- Once the units are completed, crosscut them into seven (7) 3" strips as shown in Diagram 9.

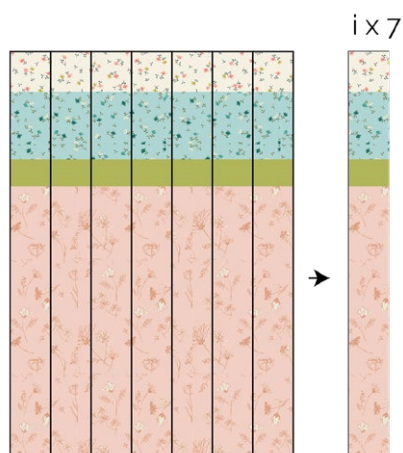


DIAGRAM 9

- Unit **j**: Take one (1) $1\frac{1}{2}$ " x 21" strip from fabric **J**, one (1) $1\frac{1}{2}$ " x 21" strip from fabric **K**, one (1) $12\frac{1}{2}$ " x 21" rectangle from fabric **C**, one (1) $2\frac{1}{2}$ " x 21" strip from fabric **K**, one (1) $11\frac{1}{2}$ " x 21" rectangle from fabric **D**, and one (1) $3\frac{1}{2}$ " x 21" strip from fabric **I**; and attach them in the same order.
- Once the units are completed, crosscut them into seven (7) 3" strips as shown in Diagram 10.

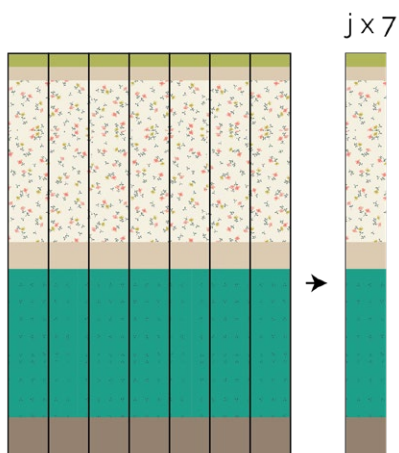


DIAGRAM 10

- Unit **k**: Take one (1) $1\frac{1}{2}$ " x 21" strip from fabric **I**, one (1) $17\frac{1}{2}$ " x 21" rectangle from fabric **B**, one (1) $2\frac{1}{2}$ " x 21" strip from fabric **J**, and one (1) $10\frac{1}{2}$ " x 21" rectangle from fabric **G**; and attach them in the same order.
- Once the units are completed, crosscut them into seven (7) 3" strips as shown in Diagram 11.

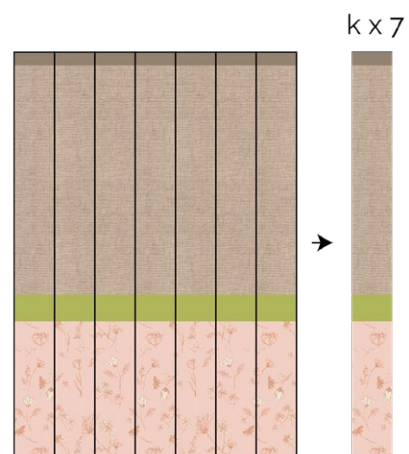


DIAGRAM 11

- Unit **l**: Take one (1) $2\frac{1}{2}$ " x 21" strip from fabric **B**, one (1) $10\frac{1}{2}$ " x 21" rectangle from fabric **I**, one (1) $1\frac{1}{2}$ " x 21" strip from fabric **J**, and one (1) $17\frac{1}{2}$ " x 21" rectangle from fabric **A**; and attach them in the same order.
- Once the units are completed, crosscut them into seven (7) 3" strips as shown in Diagram 12.

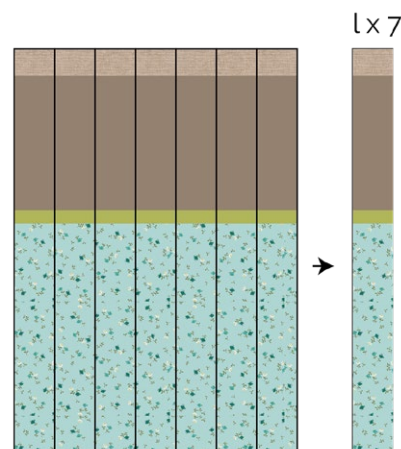


DIAGRAM 12

QUILT TOP

Sew all rights sides together with ¼" seam allowance.

- Arrange all the strips into three (3) rows of twenty eight (28) following diagram 14.
- Organize the strips for each row. If the unit number is in turquoise, place the strip upside down as shown in Diagram 13.



DIAGRAM 13

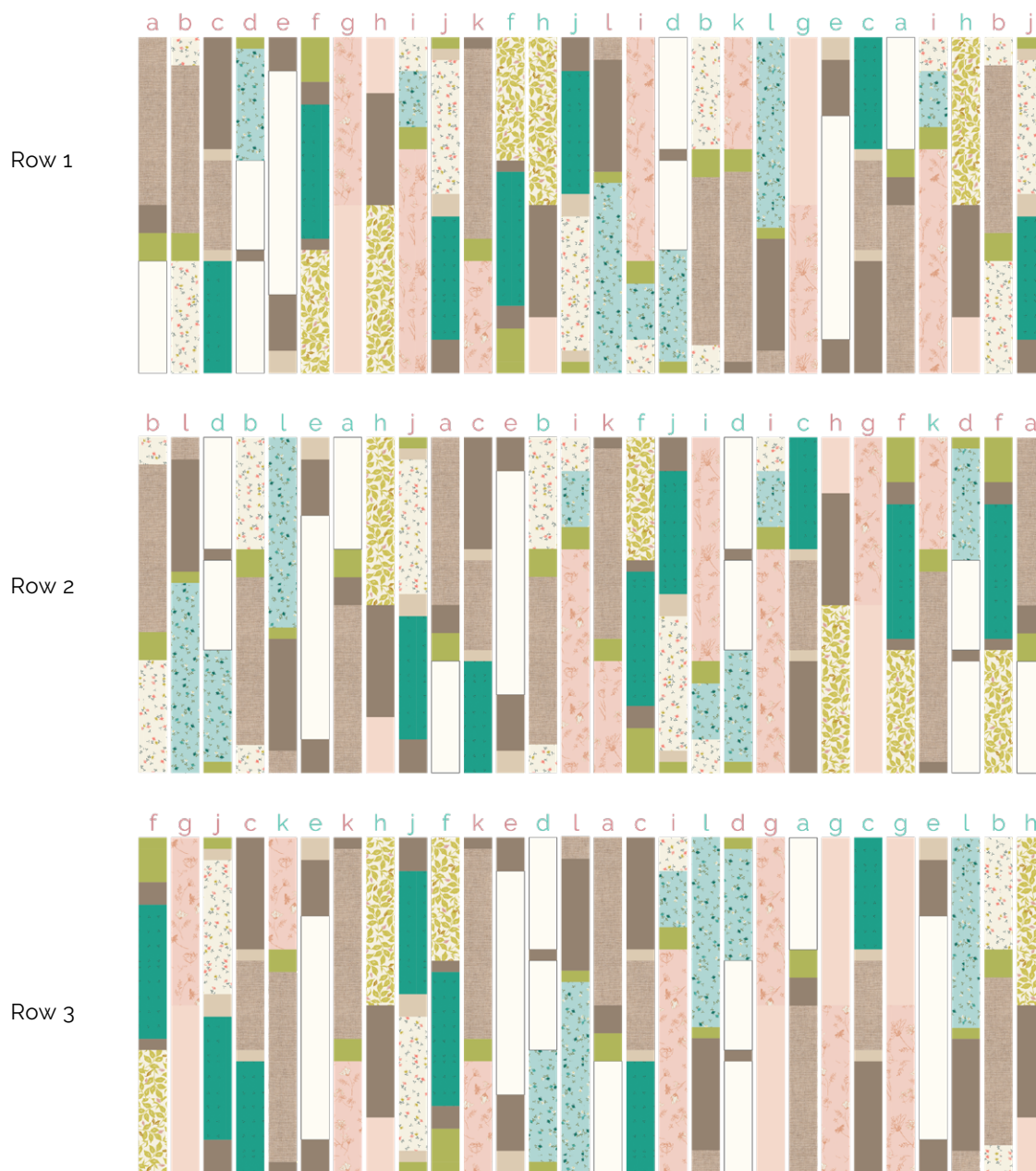


DIAGRAM 14

- Once each row is completed, Attach them in the following order: Row 1 > Row 2 > Row 3.

QUILT ASSEMBLY

Sew rights sides together.

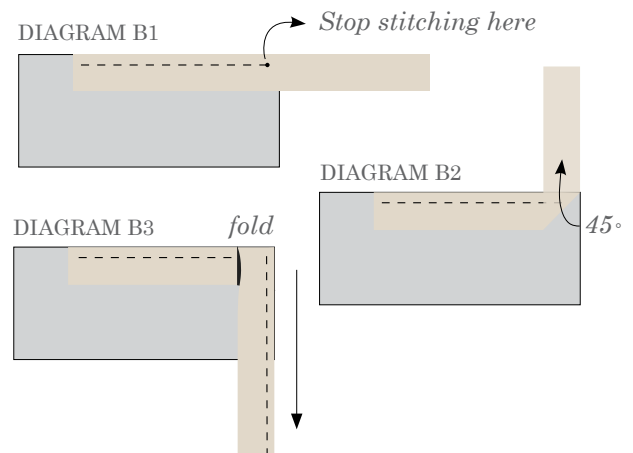
- Place BACKING FABRIC on a large surface wrong side up. Stretch it with masking tape against that surface.
- Place BATTING on top of backing fabric.
- Place TOP on top of the batting with right side facing up. Smooth away wrinkles using your hands.
- Pin all layers together and baste with basting thread, using long stitches. You can also use safety pins to join the layers.
- Machine or hand quilt starting at the center and working towards the corners. Remember that quilting motifs are a matter of personal preference. Have fun choosing yours!
- After you finished, trim excess of any fabric or batting, squaring the quilt to proceed to bind it.

BINDING

Sew rights sides together.

- Cut enough strips $1\frac{1}{2}$ " wide by the width of the fabric **I** to make a final strip 330" long. Start sewing the binding strip in the middle of one of the sides of the quilt, placing the strip right side down and leaving an approximated 5" tail. Sew with $\frac{1}{4}$ " seam allowance (using straight stitch), aligning the strip's raw edge with the quilt top's raw edge.
- Stop stitching $\frac{1}{4}$ " before the edge of the quilt (DIAGRAM B 1). Clip the threads. Remove the quilt from under the machine presser foot. Fold the strip in a motion of 45° and upward, pressing with your fingers (DIAGRAM B2). Hold this fold with your finger, bring the strip down in line with the next edge, making a horizontal fold that aligns with the top edge of the quilt (DIAGRAM B3). Start sewing at $\frac{1}{4}$ " of the border, stitching all the layers. Do the same in the four corners of the quilt.

- Stop stitching before you reach the last 5 or 6 inches. Cut the threads and remove the quilt from under the machine presser foot. Lay the loose ends of the binding flat along the quilt edge, folding the ends back on themselves where they meet. Press them together to form a crease. Using this crease as the stitching line, sew the two open ends of the binding with right sides together (you can help yourself marking with a pencil if the crease is difficult to see).
- Trim seam to $\frac{1}{4}$ " and press open. Complete the sewing. Turn binding to back of the quilt, turn raw edge inside and stitch by hand using blind stitch.



XXXXXXXXXXXXXXXXXXXXXXXXXXXXXXXXXXXX

*Congratulations
& enjoy*

XXXXXXXXXXXXXXXXXXXXXXXXXXXXXXXXXXXX



artgalleryfabrics.com

NOTE: While all possible care has been taken to ensure the accuracy of this pattern, We are not responsible for printing errors or the way in which individual work varies.

Please read instructions carefully before starting the construction of this quilt. If desired, wash and iron your fabrics before starting to cut.

© 2021 Courtesy of Art Gallery Quilts LLC. All Rights Reserved.