

X  
X  
X  
X  
X  
X  
X  
X  
X  
X  
X  
X



# ANGLES

XXXXXXXXXXXXXXXXXXXXXXXXXXXX

A DIVISION OF AGF



# Petals

DESIGNED BY AGFstudio



## POLLINATE

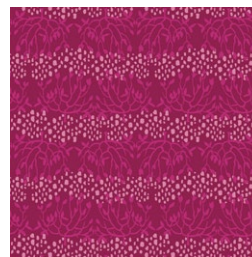
FABRICS DESIGNED BY JESSICA SWIFT



PLN-94507  
HONEYLEAF



PLN-94510  
WILDSEED



PLN-94501  
GROUNDCOVER



PLN-94508  
NECTARLOVE

### ADDITIONAL BLENDERS FOR THIS PROJECT



PE-463  
ZAMBIA STONE



## FABRIC REQUIREMENTS

### Placemat 1

Fabric <b>A</b>	PLN-94507	F8.
Fabric <b>B</b>	PLN-94510	F8.
Fabric <b>C</b>	PLN-94501	FQ.

### Placemat 2

Fabric <b>A</b>	PLN-94510	F8.
Fabric <b>B</b>	PLN-94508	F8.
Fabric <b>C</b>	PE-463	FQ.

### BACKING FABRIC

Fabric **C** (Included)

## CUTTING DIRECTIONS

*1/4" seam allowances are included.  
WOF means width of fabric.*

### Fabric **A**.

- Six (6) Hexie templates.

### Fabric **B**.

- Six (6) Hexie templates.

### Fabric **C**.

- One (1) Hexie template.

## CONSTRUCTION

*Sew all rights sides together with 1/4" seam allowance.*

For this project we will be using the Y seam technique, normally used to sew hexagons together.

### Y Seam Technique:

- Start by marking dots on the wrong side of each hexagons 1/4" away from each corner, use the diagram below as a reference.
- Sew the seams, beginning and ending at the dots (backstitch to secure the stitching at each end).
- Do not sew past the dot in either direction, stop just shy of the dot.
- You don't need to mark all the dots on each hexagon if you are comfortable with your 1/4" seam allowance. But accurate sewing is important in order for your hexagon seams to lay flat.
- Each column of hexagons will be sewn together in this manner.

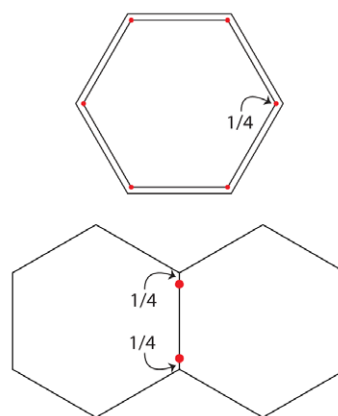


DIAGRAM 1

- Sew all hexis together in columns by aligning the raw edges that are on the straight of grain, right sides together and stitching with a ¼" seam allowance.
- Sew together in pairs of two, then press the seams open.
- Continuing until the desired number of hexis are sewn together.

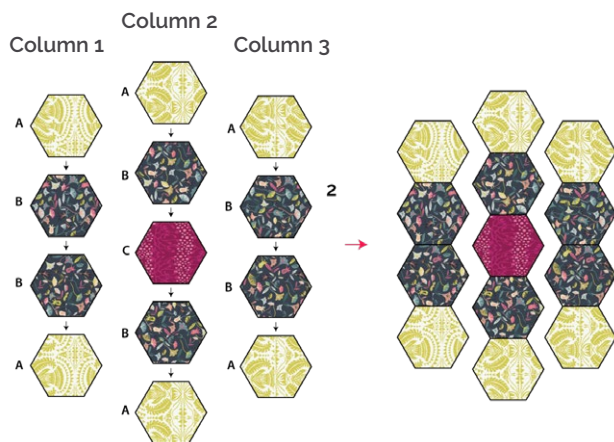


DIAGRAM 2

- Using the same technique sew the columns together.

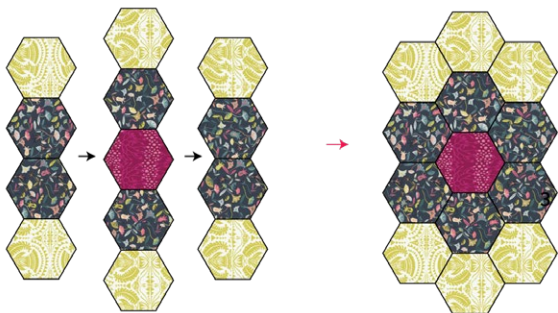


DIAGRAM 3

- Quilt as desired

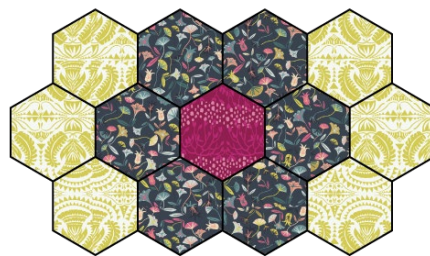


DIAGRAM 4

- Place the finished block on top of fabric C and cut by following the edges of the block.

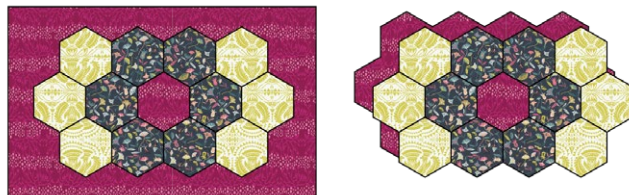


DIAGRAM 5

- Place both pieces facing right sides together and sew all around it, leave around 3" opening to turn your placemat inside out and edge stitch the opening.

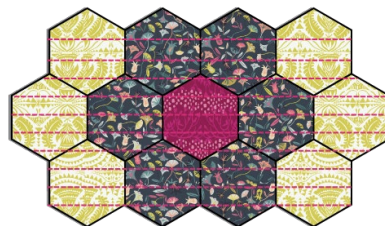


DIAGRAM 6





XXXXXXXXXXXXXXXXXXXXXXXXXXXXXXXXXXXX

*Congratulations  
& enjoy*

XXXXXXXXXXXXXXXXXXXXXXXXXXXXXXXXXXXX



[artgalleryfabrics.com](http://artgalleryfabrics.com)

NOTE: While all possible care has been taken to ensure the accuracy of this pattern, We are not responsible for printing errors or the way in which individual work varies.

Please read instructions carefully before starting the construction of this quilt. If desired, wash and iron your fabrics before starting to cut.

© 2021 Courtesy of Art Gallery Quilts LLC. All Rights Reserved.