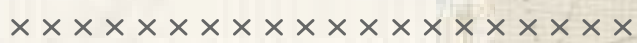




Orchestra



FREE PATTERN



A DIVISION OF AGF



DESIGNED BY PAT BRAVO



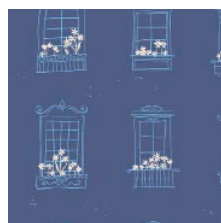
FABRICS DESIGNED BY AMY SINIBALDI



BEETHOVEN



SNT-33104
SINFONIE IN DANUBE



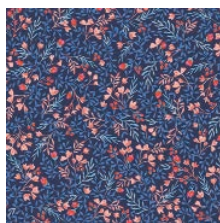
SNT-33107
VIENNA MOONLIGHT



SNT-33101
PASTORAL CRESCENDO



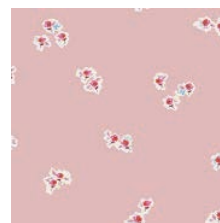
SNT-33100
EIDELWEISS JOY



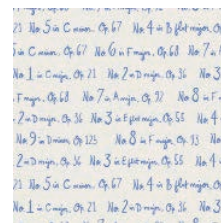
SNT-33103
FLORAL NO. 9 BOLD



SNT-33108
INK LIGHT



SNT-33102
JOSEPHINE POETIC



SNT-33106
1812

LUDWIG



SNT-23104
SINFONIE IN MELODY



SNT-23107
VIENNA ROSEBEAM



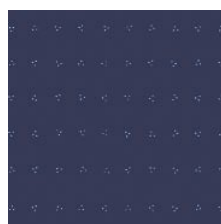
SNT-23101
PASTORAL MAGENTA



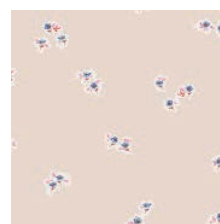
SNT-23100
EIDELWEISS ODE



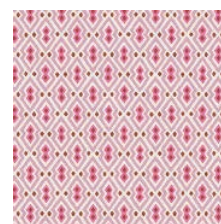
SNT-23103
FLORAL NO. 9 SHARP



SNT-23108
INK THUNDER



SNT-23102
JOSEPHINE CLASSIC



SNT-23105
OCTET



FEEL THE DIFFERENCE © 2018 Courtesy of Art Gallery Quilts LLC. All Rights Reserved.



FINISHED SIZE | 97' x 84'

FABRIC REQUIREMENTS

Fabric A	SNT-33108	4 5/8 yd.
Fabric B	SNT-23101	1/2 yd.
Fabric C	SNT-23105	3/4 yd.
Fabric D	SNT-33101	1/4 yd.
Fabric E	SNT-33107	1 1/8 yd.
Fabric F	SNT-23103	1 1/8 yd.
Fabric G	SNT-33102	1 3/8 yd.
Fabric H	SNT-33103	1 1/4 yd.
Fabric I	SNT-23100	1 1/8 yd.
Fabric J	SNT-33104	1 1/4 yd.

BACKING FABRIC

SNT-23101 8 yds (*Suggested*)

BINDING FABRIC

Fabric **H** SNT-33103 (*Included*)

CUTTING INSTRUCTIONS

Blocks

- Seventy-four (80) 2" x WOF strips from fabric **A**.
- Six (6) 2" x WOF strips from fabric **B**.
- Ten (10) 2" x WOF strips from fabric **C**.
- Two (2) 2" x 1 WOF strips from fabric **D**.
- Six (6) 2" x WOF strips from fabric **E**.
- Fifteen (15) 2" x WOF strips from fabric **F**.
- Six (6) 2" x WOF strips from fabric **G**.
- Ten (10) 2" x WOF strips from fabric **H**.
- Fifteen (15) 2" x WOF strips from fabric **I**.
- Six (6) 2" x WOF strips from fabric **J**.

Borders

- Two 1 1/2" x 79 1/2" strips from fabric **G**.
- Two 1 1/2" x 93 3/4" strips from fabric **G**.
- Two 2 1/2" x 81 1/2" strips from fabric **E**.
- Two 2 1/2" x 97 3/4" strips from fabric **E**.

CONSTRUCTION

Sew all rights sides together with 1/4" seam allowance.

Combination a:

- Grab 2 strips of fabric **H** and 1 strip of fabric **D**
- Sew them cross grain wise in the order **HDH**. (DIAGRAM 1)

Combination b:

- Repeat previous steps with fabrics **F** & **H**, in the order of **FHF** until you have a total of 42 strips. (DIAGRAM 2)
- Proceed to cut 2" strips parallel to the sel-vage. You will have 21 strips in total for blocks **P1** and **P2**. (DIAGRAM 3)



DIAGRAM 1



DIAGRAM 2

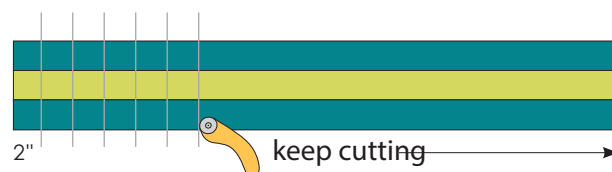


DIAGRAM 3

Combination c:

- Repeat with fabrics **C** & **D**, in the order of **CDC** until you have a total of 21 strips. (DIAGRAM 4)

Combination d:

- Repeat with fabrics **C** & **I**, in the order of **ICI** until you have a total of 42 strips. (DIAGRAM 5)



DIAGRAM 4



DIAGRAM 5

- Grab 2 combination b strips and 1 combination a strip at a time. Sew them together with a ¼" seam allowance cross grain wise making sure that all seams match.
- Repeat until you have a total of 21 patches for the **P1** and **P2** blocks.
- The finished square should look as follows:



- Grab 2 combination d strips and 1 combination c strip at a time. Sew them together with a ¼" seam allowance cross grain wise making sure that all seams match.
- Repeat until you have a total of 21 patches for the **B1** and **B2** blocks.
- The finished square should look as follows:



XX

Lateral Panels:

- Grab 2 strips of fabric **A** and 1 strip of fabric **F**
- Sew them cross grain wise in the order **AFA**.
- Proceed to cut 9" strips parallel to the selvage. Per each time you do this with the WOF, you will have 4 panels.
- Repeat until you have a total of 42 panels. Set aside.



LATERAL PANEL FOR **P1** & **P2** BLOCKS

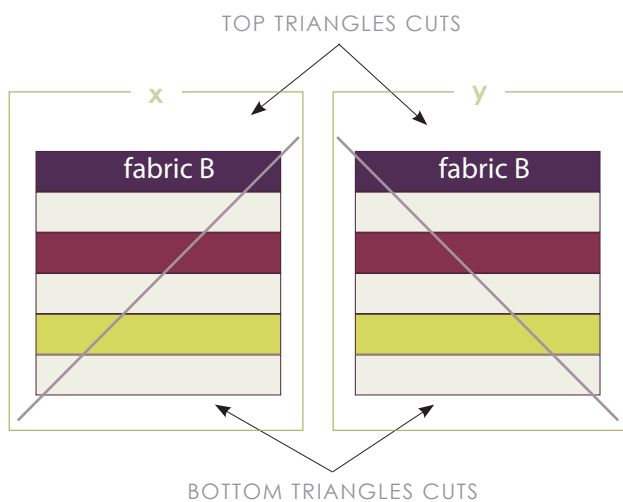
- Repeat previous steps with 2 strips of fabric **A** and 1 strip of fabric **I**.
- Sew them cross grain wise in the order **AIA**.
- Repeat until you have a total of 42 panels. Set aside.



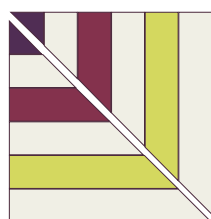
LATERAL PANEL FOR **B1** & **B2** BLOCKS

Half Square Triangle Units:

- Grab 3 strips of fabric **A** and 1 strip of each of the following fabrics: **B**, **G**, and **C**.
- Sew them cross grain wise in the order **BAG-ACA**. Proceed to cut 9 ½" squares parallel to the selvage. Per each time you do this, you will have 4 squares.
- Repeat the previous step until you have 22 squares, or about 6 times.
- Now you will cut one-half of these squares diagonally upwards (**x**), and the other half diagonally downwards (**y**) always positioning fabric **B** on top.



- Grab one bottom triangle cut from way "x", and one bottom triangle cut from way "y" and position them together on the diagonal so that the same fabrics match making 90° angles.



BOTTOM TRIANGLES CUTS

- Sew along the diagonal with a $\frac{1}{4}$ " seam allowance making sure that all seams match. Repeat this step with the top triangle cuts. You can disregard 2 of the TOP triangle cuts as they will not be needed for this quilt.
- Repeat the previous step with all squares.
- You will end up with 11 new squares for **P1** block, and 10 new squares for **P2** block.

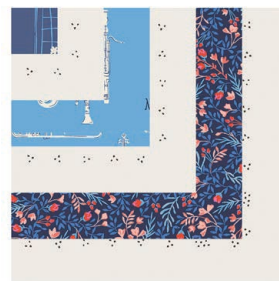


P1 BLOCK



P2 BLOCK

- XXXXXXXXXXXXXXXXXXXXXXXXXXXXXXXXXXXX
- Repeat Step 3 for blocks **B1** and **B2**, but this time grab 3 strips of fabric **A** and 1 strip of each of the following fabrics: **E**, **J**, and **H**.
 - Sew them cross grain wise in the order **EAJA-HA** with a $\frac{1}{4}$ seam allowance. Repeat steps as above only this time you can disregard 2 of the BOTTOM triangle cuts as they will not be needed for this quilt. In this case you will end up with 10 rectangles for **B1** and 11 rectangles for **B2**.



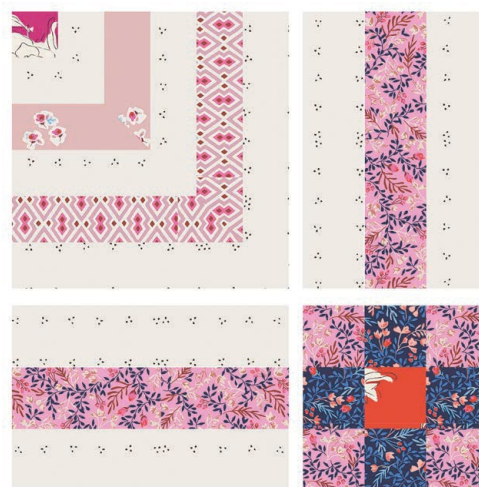
B1 BLOCK



B2 BLOCK

Assemble Block:

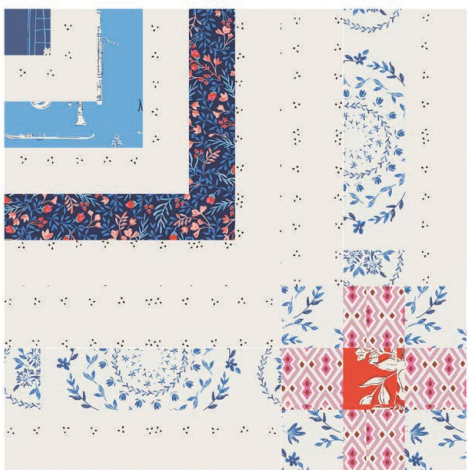
- Grab 1 nine-patch square, 2 lateral panels, and 1 Half-square triangle unit; for the latter always make sure to leave the smallest square toward the outside, whether you see it with fabric **A** or fabric **B**.



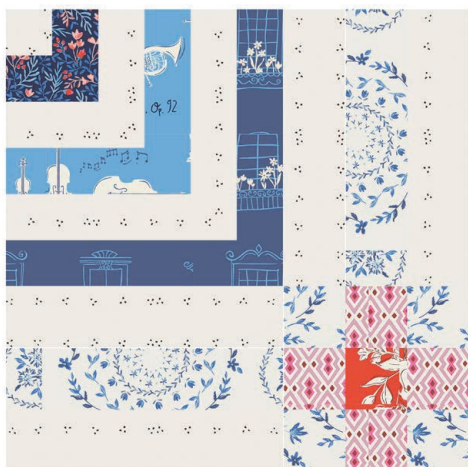
P1 BLOCK



P2 BLOCK



B1 BLOCK



B2 BLOCK

- Repeat for blocks **B1** and **B2**. Always make sure to leave the smallest square toward the outside, whether you see it with fabric **A** or fabric **E**.

TOP ASSEMBLE

- The blocks in this quilt rotate as the assembling progresses; please refer to the cover picture to determine the original position of each block.
- Sew the rows in the following order with the indicated angle rotations (or follow the cover photo):

1 st ROW:	P1	B2 -90°	P2	B1 -90°	P1	B2 -90°
2 nd ROW:	B2 90°	P1 180°	B1 90°	P2 180°	B2 90°	P1 180°
3 rd ROW:	P2	B1 -90°	P1	B2 -90°	P2	B1 -90°
4 th ROW:	B1 90°	P2 180°	B2 90°	P1 180°	B1 90°	P2 180°
5 th ROW:	P1	B2 -90°	P2	B1 -90°	P1	B2 -90°
6 th ROW:	B2 90°	P1 180°	B1 90°	P2 180°	B2 90°	P1 180°
7 th ROW:	P2	B1 -90°	P1	B2 -90°	P2	B1 -90°

- After each row is sewn, assembly the rows together maintaining the order from top to bottom or vice versa.

Borders:

Inner Border:

- Sew two 79 1/2" x 1 1/2" fabric **G** strips along the top and bottom sides of the quilt top.
- Sew the other two 93 3/4" x 1 1/2" fabric **G** strips along the left & right sides of the quilt top.

Outer Border:

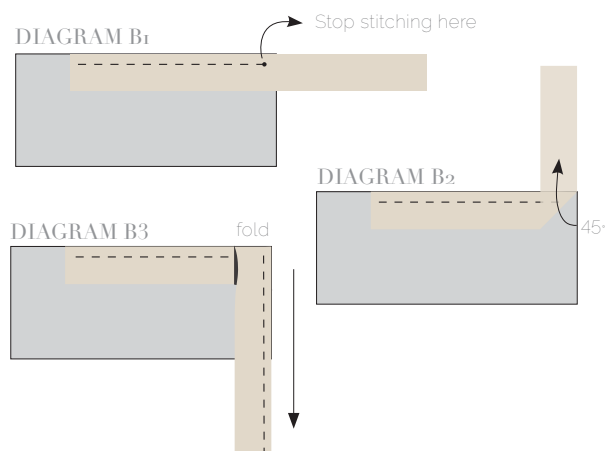
- Sew two 81 1/2" x 2 1/2" fabric **E** strips along the top and bottom sides of the quilt top.
- Sew the other two 97 3/4" x 2 1/2" fabric **E** strips along the left & right sides of the quilt top.

QUILT ASSEMBLY

Sew rights sides together

- Place BACKING FABRIC on a large surface wrong side up. Stretch it with masking tape against that surface.
- Place BATTING on top of backing fabric.
- Place TOP on top of the batting with right side facing up. Smooth away wrinkles using your hands.
- Pin all layers together and baste with basting thread, using long stitches. You can also use safety pins to join the layers.
- Machine or hand quilt starting at the center and working towards the corners. Remember that quilting motifs are a matter of personal preference. Have fun choosing yours!
- After you finished, trim excess of any fabric or batting, squaring the quilt to proceed to bind it.

- Stop stitching before you reach the last 5 or 6 inches. Cut the threads and remove the quilt from under the machine presser foot. Lay the loose ends of the binding flat along the quilt edge, folding the ends back on themselves where they meet. Press them together to form a crease. Using this crease as the stitching line, sew the two open ends of the binding with right sides together (you can help yourself marking with a pencil if the crease is difficult to see).
- Trim seam to ¼" and press open. Complete the sewing. Turn binding to back of the quilt, turn raw edge inside and stitch by hand using blind stitch.



BINDING

Sew rights sides together.

- Cut enough strips 1½" wide by the width of the fabric H to make a final strip 372" long. Start sewing the binding strip in the middle of one of the sides of the quilt, placing the strip right side down and leaving an approximated 5" tail. Sew with ¼" seam allowance (using straight stitch), aligning the strip's raw edge with the quilt top's raw edge.
- Stop stitching ¼" before the edge of the quilt (DIAGRAM B 1). Clip the threads. Remove the quilt from under the machine presser foot. Fold the strip in a motion of 45° and upward, pressing with your fingers (DIAGRAM B2). Hold this fold with your finger, bring the strip down in line with the next edge, making a horizontal fold that aligns with the top edge of the quilt (DIAGRAM B3). Start sewing at ¼" of the border, stitching all the layers. Do the same in the four corners of the quilt.



artgalleryfabrics.com

NOTE: While all possible care has been taken to ensure the accuracy of this pattern, We are not responsible for printing errors or the way in which individual work varies. Please read instructions carefully before starting the construction of this quilt. If desired, wash and iron your fabrics before starting to cut.