

X  
X  
X  
X  
X  
X  
X  
X  
X  
X  
X  
X

## This image displays a complex, repeating geometric pattern. The design is composed of various shapes, including circles and diamonds, arranged in a grid-like fashion. The primary colors used are teal, light blue, brown, yellow, pink, and orange, which are set against a dark green background. The pattern features a variety of textures, including solid colors, floral motifs, and geometric designs. The overall effect is a vibrant and intricate visual composition.

# ANGLES

A DIVISION OF AGF

XXXXXXXXXXXXXXXXXXXXXXXXXXXX

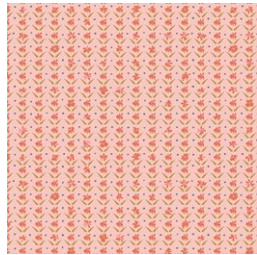
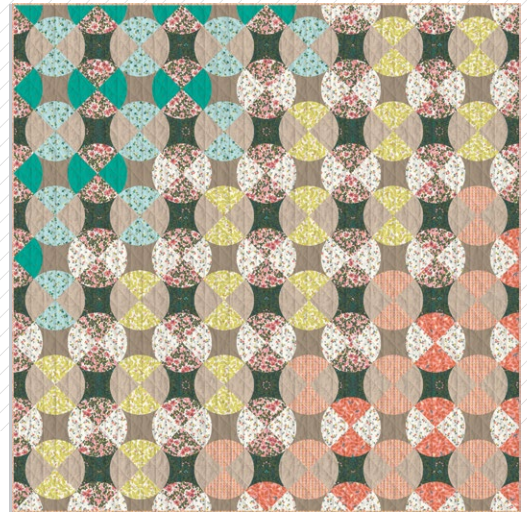


# CHANDELIER

QUILT DESIGNED BY AGFstudio



FABRICS DESIGNED BY AMY SINIBALDI



VLV-49651  
SWEET DARLING



VLV-49656  
OLIVIA DULCET



VLV-49657  
WOODCUT SUNSET



VLV-59650  
FIREFLY SLUMBER



VLV-59652  
INK VERT



VLV-59653  
JASMINE SOULFUL



VLV-59656  
OLIVIA CELESTE



VLV-59657  
WOODCUT SUNRISE



ADDITIONAL BLENDERS FOR THIS PROJECT



DEN-L-4000  
SOFT SAND



PE-445  
MINK

# CHANDELIER

FINISHED SIZE | 85" x 85"

## FABRIC REQUIREMENTS

Fabric <b>A</b>	VLV-49657	½ yd.
Fabric <b>B</b>	VLV-49651	1 yd.
Fabric <b>C</b>	VLV-49656	1⅝ yd.
Fabric <b>D</b>	VLV-59657	⅞ yd.
Fabric <b>E</b>	VLV-59652	½ yd.
Fabric <b>F</b>	VLV-59653	1⅝ yd.
Fabric <b>G</b>	VLV-59656	½ yd.
Fabric <b>H</b>	DEN-L-4000	1⅜ yd.
Fabric <b>I</b>	VLV-59650	3⅜ yd.
Fabric <b>J</b>	PE-445	3⅜ yd.

**BACKING FABRIC**  
VLV-49653 8 yds (*Suggested*)

**BINDING FABRIC**  
Fabric **B** VLV-49651 (*Included*)

## CUTTING DIRECTIONS

¼" seam allowances are included.  
WOF means width of fabric.

- Sixteen (16) template a from fabric **A**.
- Twenty (20) template a from fabric **B**.
- Sixty eight (68) template a from fabric **C**.
- Thirty two (32) template a from fabric **D**.
- Sixteen (16) template a from fabric **E**.
- Sixty eight (68) template a from fabric **F**.
- Twenty (20) template a from fabric **G**.
- Seventy two (72) template a from fabric **H**.
- Thirty (30) template b from fabric **I**.
- Twelve (12) template c from fabric **I**.
- Thirty (30) template b from fabric **J**.
- Twelve (12) template c from fabric **J**.

x 16



x 68



x 16



x 20



x 20



x 32



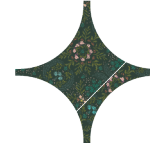
x 68



x 72



x 30



x 12



x 30



x 12



DIAGRAM 1

## CONSTRUCTION

*Sew all rights sides together with 1/4" seam allowance.*

- Join template a to template b and c following the diagram to make the blocks:



DIAGRAM 2

- For fabric placement and attachment for blocks A-P, follow diagram 3.



DIAGRAM 3

## QUILT TOP

- Join the blocks into the following rows:

Row 1: A - C

Row 2: A - D - B - C

Row 3: A - D - B - D - B - C

Row 4: A - F - B - F - B - F - B - E

Row 5: A - G - B - G - B - G - B - G - B - H

Row 6: A - I - B - I - B - I - B - I - B - I - B - H

Row 7: H - B - I - B - I - B - I - B - I - B - I - A

Row 8: H - B - J - B - J - B - J - B - J - A

Row 9: K - N - L - N - L - N - L - M

Row 10: K - P - L - P - L - O

Row 11: K - P - L - O

Row 12: K - O

- For fabric placement and attachment follow diagram 4.

- Trim the edges to square it.



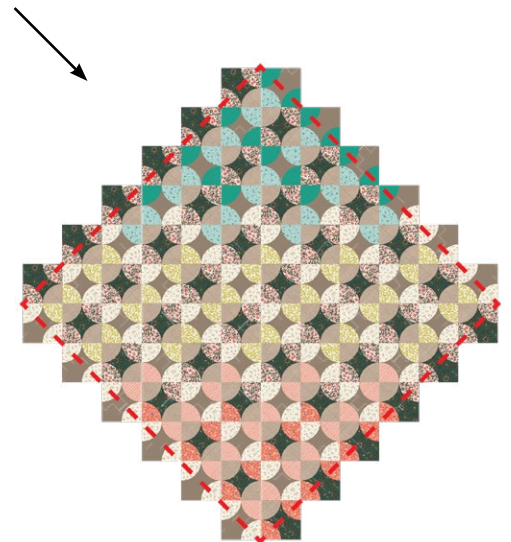
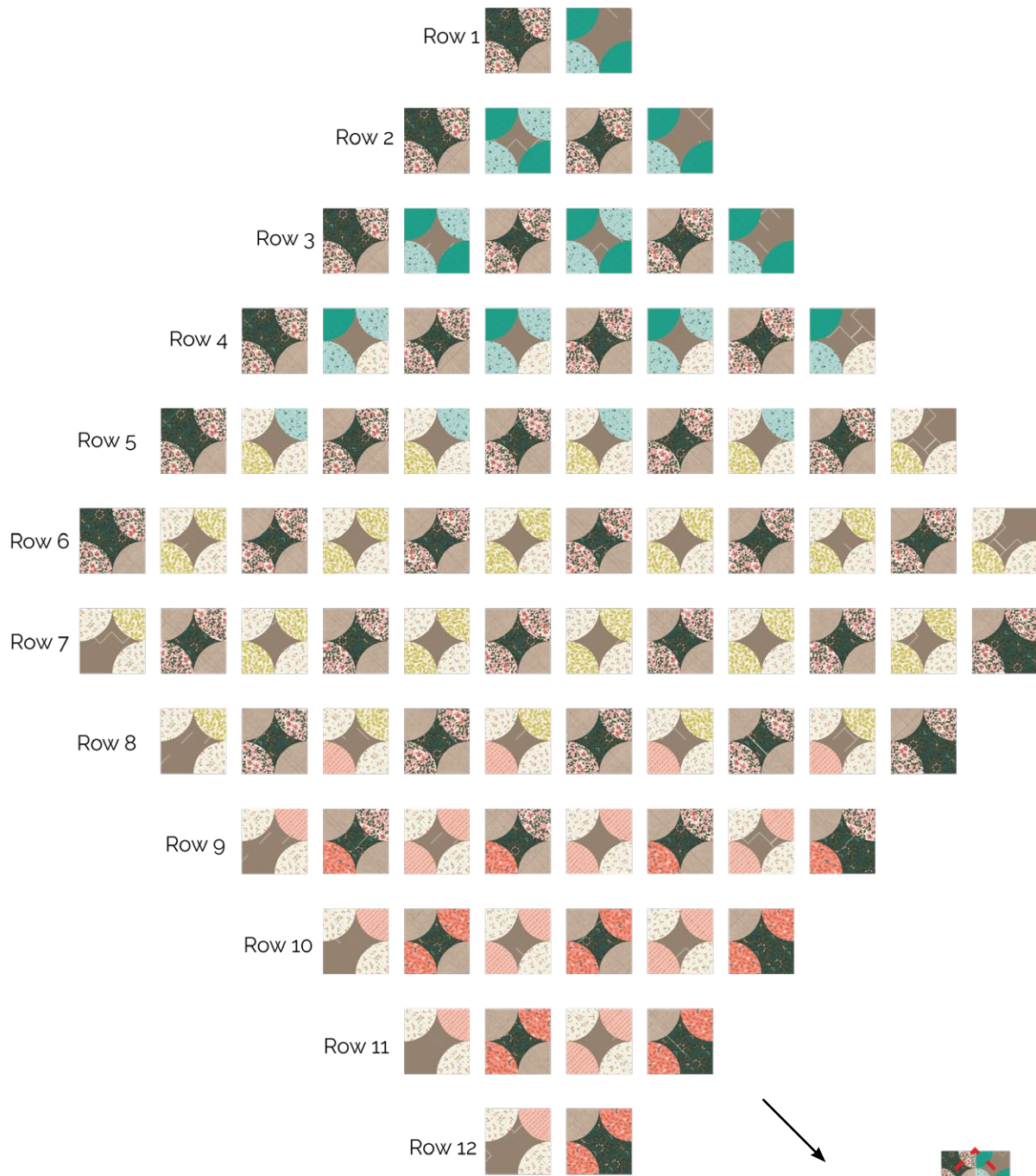


DIAGRAM 4

## QUILT ASSEMBLY

*Sew rights sides together.*

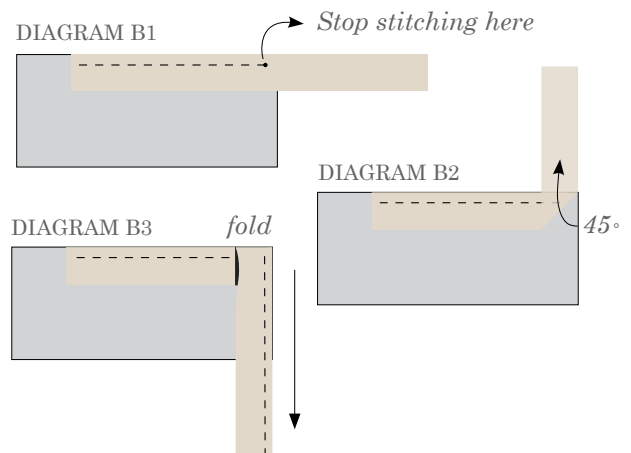
- Place BACKING FABRIC on a large surface wrong side up. Stretch it with masking tape against that surface.
- Place BATTING on top of backing fabric.
- Place TOP on top of the batting with right side facing up. Smooth away wrinkles using your hands.
- Pin all layers together and baste with basting thread, using long stitches. You can also use safety pins to join the layers.
- Machine or hand quilt starting at the center and working towards the corners. Remember that quilting motifs are a matter of personal preference. Have fun choosing yours!
- After you finished, trim excess of any fabric or batting, squaring the quilt to proceed to bind it.

## BINDING

*Sew rights sides together.*

- Cut enough strips  $1\frac{1}{2}$ " wide by the width of the fabric **B** to make a final strip 350" long. Start sewing the binding strip in the middle of one of the sides of the quilt, placing the strip right side down and leaving an approximated 5" tail. Sew with  $\frac{1}{4}$ " seam allowance (using straight stitch), aligning the strip's raw edge with the quilt top's raw edge.
- Stop stitching  $\frac{1}{4}$ " before the edge of the quilt (DIAGRAM B 1). Clip the threads. Remove the quilt from under the machine presser foot. Fold the strip in a motion of  $45^\circ$  and upward, pressing with your fingers (DIAGRAM B2). Hold this fold with your finger, bring the strip down in line with the next edge, making a horizontal fold that aligns with the top edge of the quilt (DIAGRAM B3). Start sewing at  $\frac{1}{4}$ " of the border, stitching all the layers. Do the same in the four corners of the quilt.

- Stop stitching before you reach the last 5 or 6 inches. Cut the threads and remove the quilt from under the machine presser foot. Lay the loose ends of the binding flat along the quilt edge, folding the ends back on themselves where they meet. Press them together to form a crease. Using this crease as the stitching line, sew the two open ends of the binding with right sides together (you can help yourself marking with a pencil if the crease is difficult to see).
- Trim seam to  $\frac{1}{4}$ " and press open. Complete the sewing. Turn binding to back of the quilt, turn raw edge inside and stitch by hand using blind stitch.

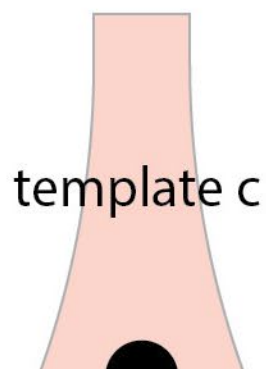
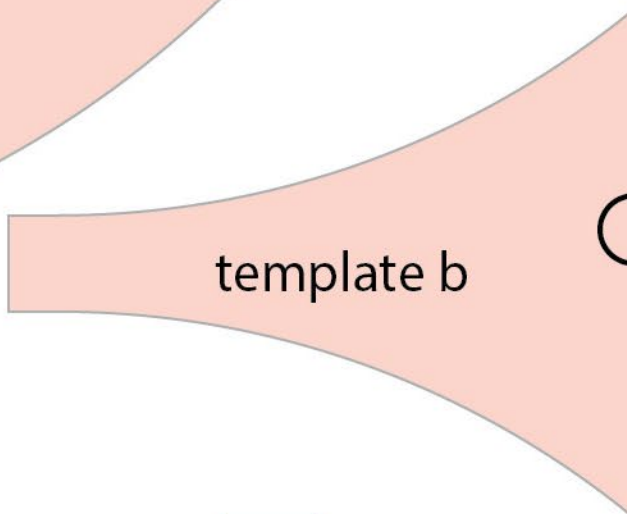
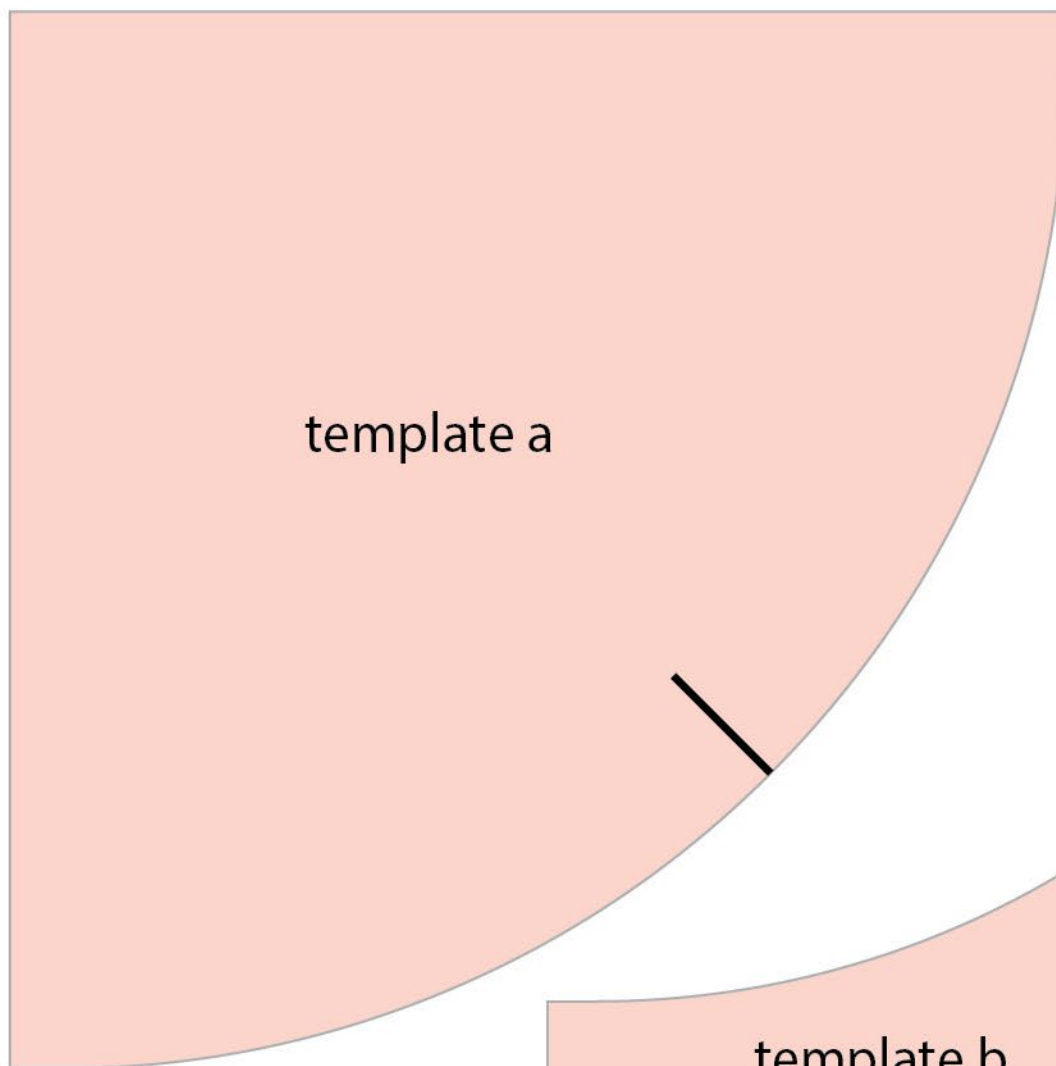


[artgalleryfabrics.com](http://artgalleryfabrics.com)

NOTE: While all possible care has been taken to ensure the accuracy of this pattern, We are not responsible for printing errors or the way in which individual work varies.

Please read instructions carefully before starting the construction of this quilt. If desired, wash and iron your fabrics before starting to cut.

1" x 1"  
Printer Test  
Square







## template c



