

XXXXXX

A close-up photograph of a black fabric cushion featuring a repeating pattern of colorful, irregularly shaped patches. The patches are arranged in a grid-like fashion and contain various designs: some have dense floral prints in yellow, pink, and red; others have green leaves and red flowers; one is solid bright pink; another is white with black floral outlines; and some have abstract patterns. The patches are outlined with a white, hand-stitched border. The cushion is resting on a wooden surface, and a white flower is visible in the bottom left corner.

XXXXXXXXXXXXXXXXXXXXXXXXXXXX



Flower Power



DESIGNED BY AGFstudio

THE FLOWER SOCIETY

FABRICS DESIGNED BY AGF STUDIO



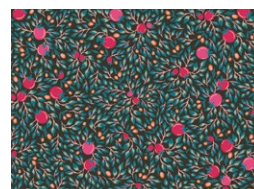
TFS-99102
BLOOMKIND MEADOW



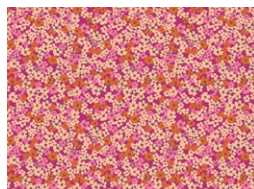
TFS-99101
PETALLED IDEAL



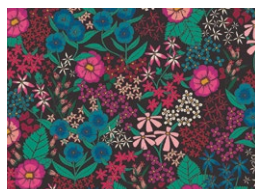
TFS-99104
DAINTY FLEURISTE RUBY



TFS-99110
GATHERING DITSY



TFS-99106
RETRO PRAIRIE BLUSH



TFS-99100
PERENNIAL SOIREE



TFS-99111
DAINTY FLEURISTE ECRU



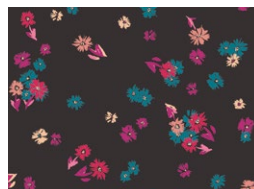
TFS-99113
GENTLE ROSEBUDS SOLAR



TFS-99103
RETRO PRAIRIE FRESH



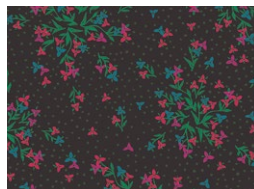
TFS-99114
LUMINOUS FLORICULTURE



TFS-99107
DREAMLIKE DAISIES



TFS-99108
WINDSWEPT ILLUMINATED



TFS-99112
WILD AT HEART



TFS-99109
STRIKING GARDENISTA

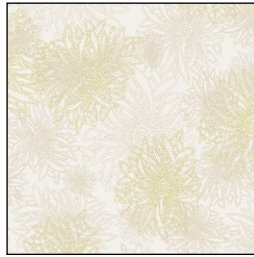


FEEL THE DIFFERENCE © 2021 Courtesy of Art Gallery Quilts LLC. All Rights Reserved.

ADDITIONAL BLENDERS FOR THIS PROJECT



FE-536
FUCHSIA



FE-533
WINTER WHEAT



FE-541
BLUE LAGOON



PE-413
CAVIAR



FINISHED SIZE | 24" x 12"

FABRIC REQUIREMENTS

Fabric A	TFS-99102	F8
Fabric B	TFS-99101	F8
Fabric C	TFS-99104	F8
Fabric D	TFS-99110	F8
Fabric E	TFS-99106	F8
Fabric F	TFS-99100	F8
Fabric G	TFS-99111	F8
Fabric H	TFS-99113	F8
Fabric I	TFS-99103	F8
Fabric J	TFS-99114	F8
Fabric K	TFS-99107	F8
Fabric L	TFS-99108	F8
Fabric M	TFS-99112	F8
Fabric N	TFS-99109	F8
Fabric O	FE-536	F8
Fabric P	FE-533	F8
Fabric Q	FE-541	F8
Fabric R	PE-413	$\frac{3}{4}$ yd.

BACKING FABRIC

Fabric **R** PE-413 (Included)

CUTTING DIRECTIONS

*$\frac{1}{4}$ " seam allowances are included.
WOF means width of fabric.*

- Three (3) templates from fabric **A**.
- One (1) template from fabric **B**.
- Two (2) templates from fabric **C**.
- Two (2) templates from fabric **D**.
- Four (4) templates from fabric **E**.
- Two (2) templates from fabric **F**.
- Two (2) templates from fabric **G**.
- Two (2) templates from fabric **H**.
- Three (3) templates from fabric **I**.
- One (1) template from fabric **J**.
- One (1) template from fabric **K**.
- One (1) template from fabric **L**.
- One (1) template from fabric **M**.
- One (1) template from fabric **N**.
- Three (3) templates from fabric **O**.
- Two (2) templates from fabric **P**.
- One (1) template from fabric **Q**.
- One (1) $24\frac{1}{2}$ " x $12\frac{1}{2}$ " rectangle from fabric **R**.
- Two (2) $16\frac{1}{2}$ " x $12\frac{1}{2}$ " rectangles from fabric **R** (backing).

CONSTRUCTION

Sew all rights sides together with $\frac{1}{4}$ " seam allowance.

This pillow construction is based on applique technique.

- Take one (1) $24\frac{1}{2}$ " x $12\frac{1}{2}$ " rectangle from fabric **R** with all of your fabric template pieces from fabrics **A-Q** and follow the placement for each piece on the diagram below.
- Use the attached template as your guide for template placement.
- Place stabilizer on the light fabric as needed.
- Secure each piece by pinning them.

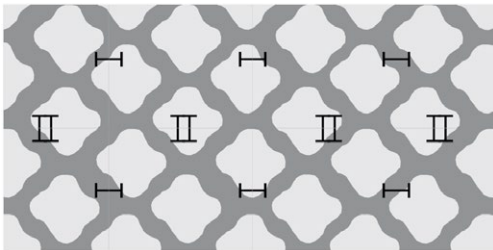


DIAGRAM 1

- Trim the pieces that are halfway out of the fabric **R** rectangle.
- Top stitch the edges of each fabric template with straight or zig zag stitch.



DIAGRAM 2

BACK OF PILLOW

- Take both $16\frac{1}{2}$ " x $12\frac{1}{2}$ " rectangles from fabric **R**.
- Fold one bottom edge $\frac{1}{2}$ " towards the wrong side of the fabric of one of the rectangle.
- Fold the same edge $\frac{1}{2}$ " again and edge stitch the fold in place to have a clean edge.
- Repeat the same for the top edge of the bottom piece.
- Take the quilted pillow top and lay it flat right side up.
- Take one rectangle from fabric **R** and align it wrong side up to the right side of the pillow top.
- Take the other rectangle from fabric **R** and align it wrong side up to the left side of the pillow top.
- Pin the three pieces in place and sew around the edges at $\frac{1}{4}$ ".
- Clip the corners and flip the piece to the right side of the fabric.
- Fill the pillow with a 24" x 12" pillow form and enjoy!

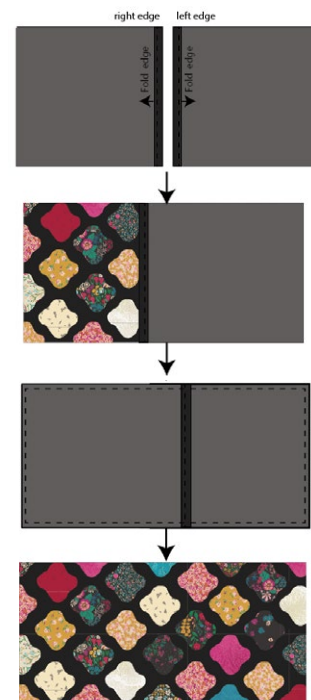


DIAGRAM 3

XXXXXXXXXXXXXXXXXXXXXXXXXXXXXXXXXXXX

*Congratulations
& enjoy*

XXXXXXXXXXXXXXXXXXXXXXXXXXXXXXXXXXXX

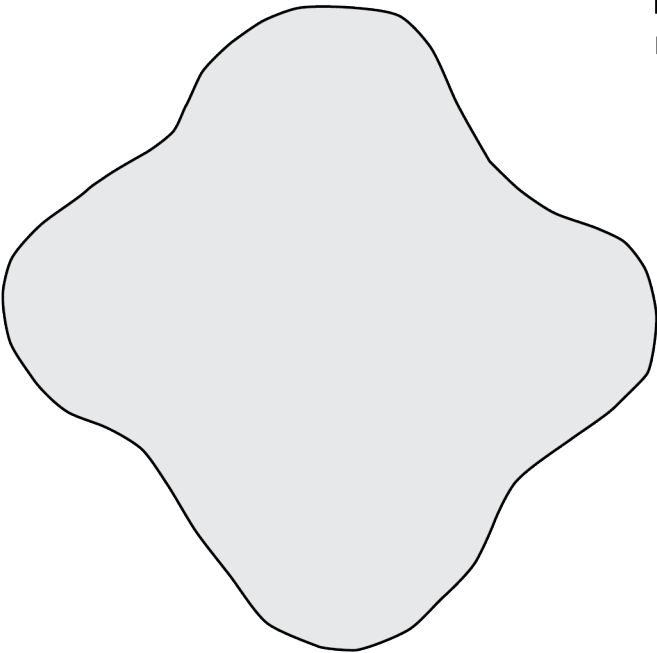


artgalleryfabrics.com

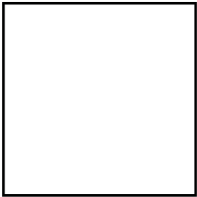
NOTE: While all possible care has been taken to ensure the accuracy of this pattern, We are not responsible for printing errors or the way in which individual work varies.

Please read instructions carefully before starting the construction of this quilt. If desired, wash and iron your fabrics before starting to cut.

© 2021 Courtesy of Art Gallery Quilts LLC. All Rights Reserved.



Printer Test

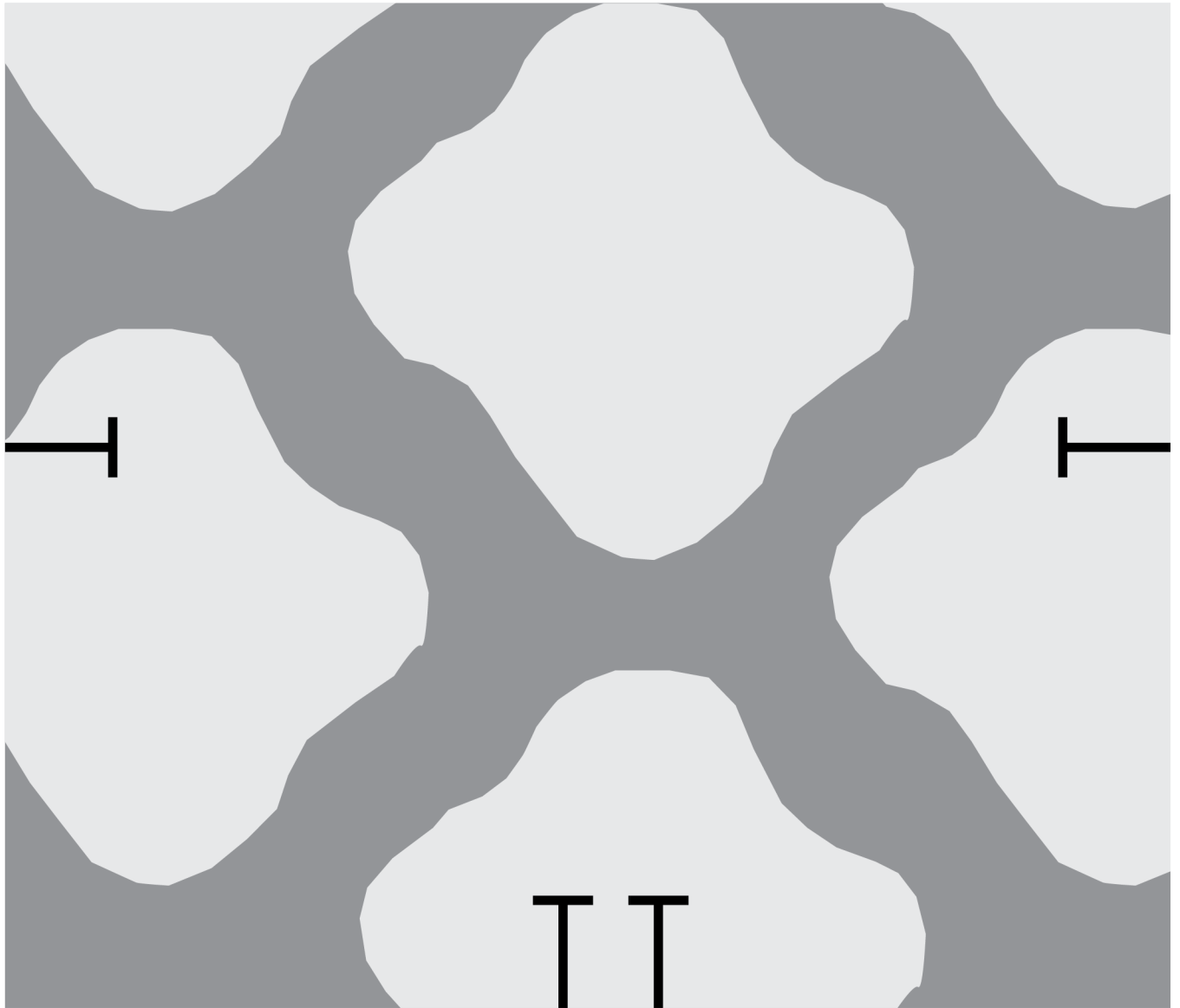


1" Square

1



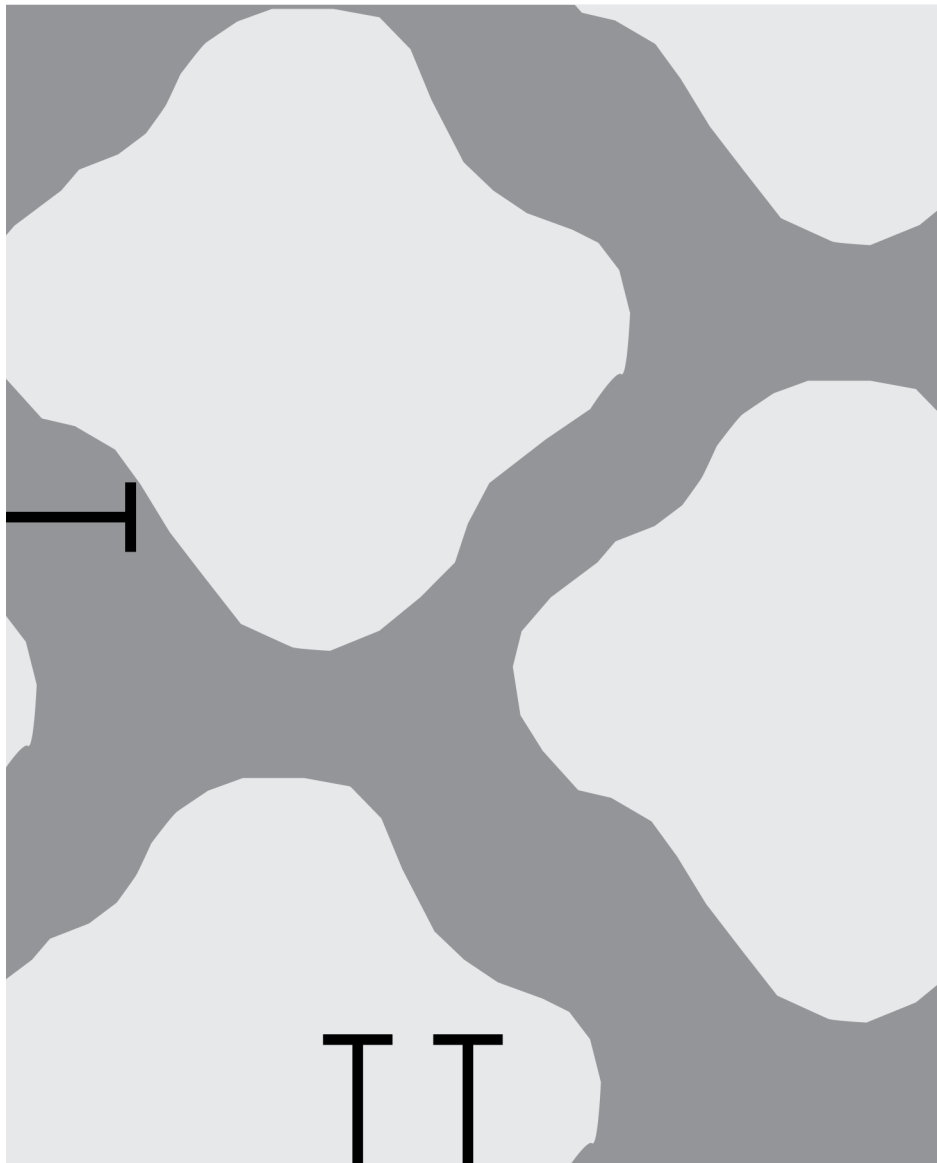
2

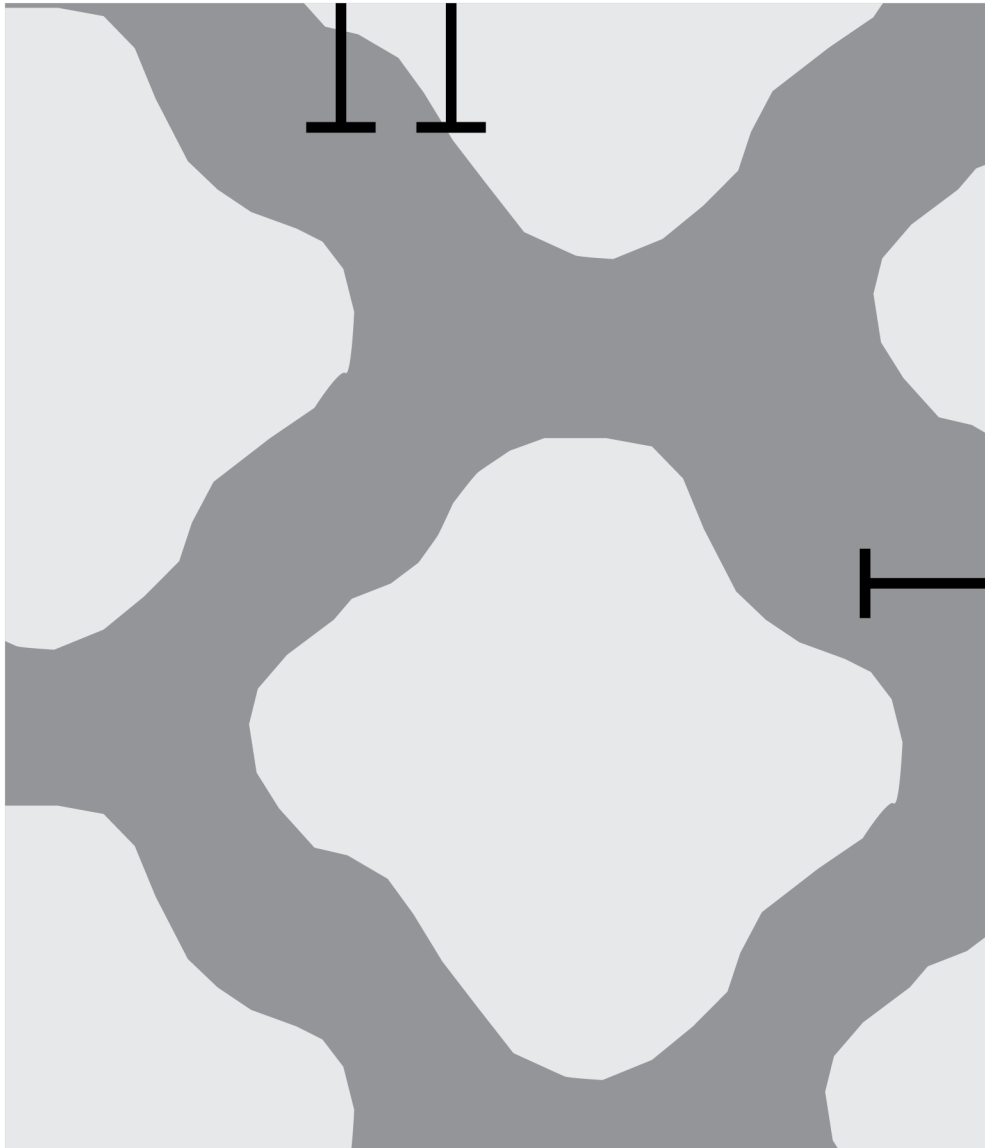


3

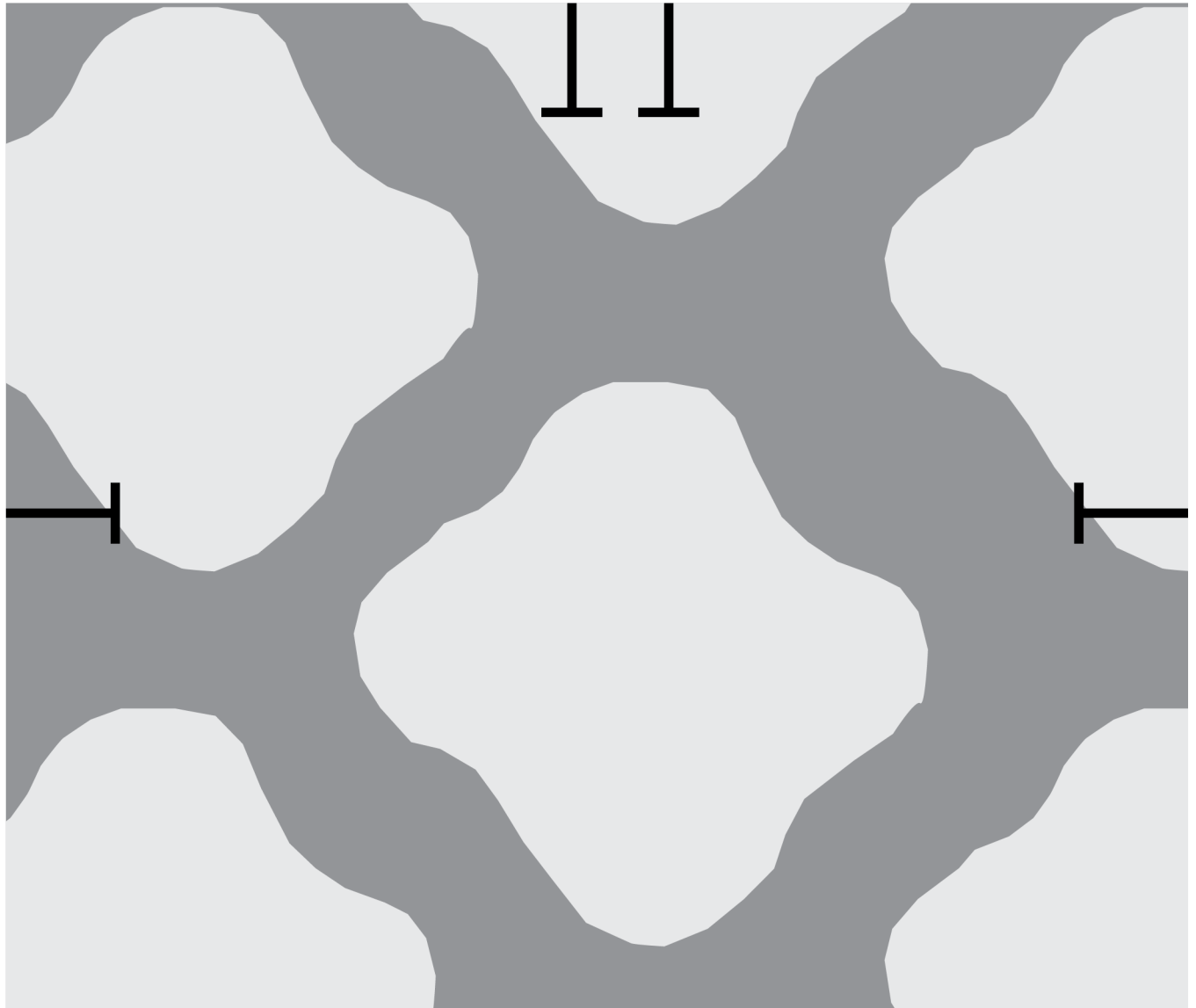


4





5



6

