

## A hand with blue nail polish and a brown beaded bracelet holds a tote bag. The bag has a dark blue side with a vibrant floral pattern of pink, red, and yellow flowers, and a white side with a similar pattern. The background is a dense wall of green leaves and bright orange flowers.



# Bouquet Bag

BAG DESIGNED BY AGF STUDIO



FABRICS DESIGNED BY BARI J.



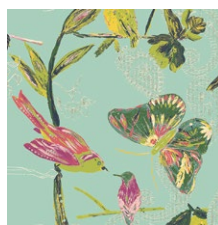
PRINTANIER SUN



**JOI-79120**  
PARADIS CITRUS



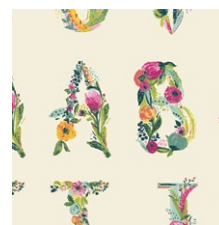
**JOI-79121**  
TRES STREAKED SHINE



**JOI-79127**  
C'EST LA VIE SPRING



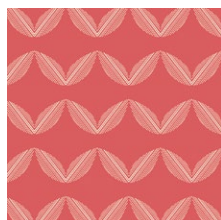
**JOI-79122**  
STITCHED DIAMANT ZEST



**JOI-79129**  
JOYEUX ALPHABET



**JOI-79125**  
PUG VILLE VERT



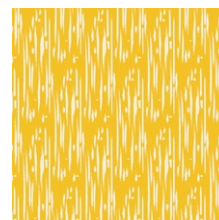
**JOI-79124**  
JOY PLANTE CORAL



**JOI-79123**  
PETIT POTPOURRI GOLD



**JOI-79126**  
ANGLE FOLIE PRISTINE



**JOI-79128**  
SHIBORI SUN

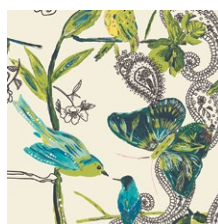
HIVERNAL CLOUD



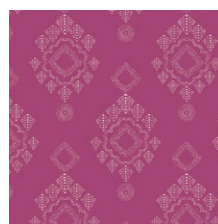
**JOI-89120**  
PARADIS SWEET



**JOI-89121**  
TRES STREAKED DIM



**JOI-89127**  
C'EST LA VIE WINTER



**JOI-89122**  
STITCHED DIAMANT VERVE



**JOI-89130**  
COQUET BOUQUET



**JOI-89125**  
PUG VILLE ROSE



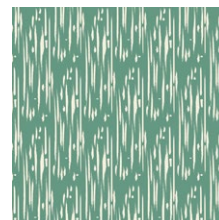
**JOI-89124**  
JOY PLANTE CHARTREUSE



**JOI-89123**  
PETIT POTPOURRI AZUR



**JOI-89126**  
ANGLE FOLIE MENTHE



**JOI-89128**  
SHIBORI JARDIN



FEEL THE DIFFERENCE © 2015 Courtesy of Art Gallery Quilts LLC. All Rights Reserved.

# Bouquet Bag

FINISHED SIZE | 28" x 15"

## FABRIC REQUIREMENTS

Fabric <b>A</b>	JOI-79129	$\frac{7}{8}$ yd.
Fabric <b>B</b>	JOI-89130	$\frac{7}{8}$ yd.
Fabric <b>C</b>	PE-464	$\frac{7}{8}$ yd.

COTTON BATTING  
 $\frac{7}{8}$  yd.

1 MAGNETIC SNAP

## CUTTING DIRECTIONS

*$\frac{1}{2}$ " seam allowances are included.*

Match the pattern pieces, tape together and cut out pattern pieces. The pattern includes  $\frac{1}{2}$ " seam allowance. Cut:

- (1) one Bag Side Piece from fabric **A**
- (1) one Bag Side Piece from fabric **B**
- (1) one Bottom Piece from fabric **B**
- (2) two Bag Side Pieces from fabric **C**
- (1) one Bottom Piece from fabric **C**
- (2) two Bag Side Pieces from BATTING
- (1) one Bottom Piece from BATTING

## CONSTRUCTION

*Sew all rights sides together with  $\frac{1}{2}$ " seam allowance.*

- Place batting pieces for purse sides on wrong sides of Bag Side Pieces.
- Sew together the two sides, right sides together with batting outside, at the front and back seams. (Fabric A & B)
- Sew the two lining pieces together at the front and back seams (Fabric C).
- See Diagram 1.

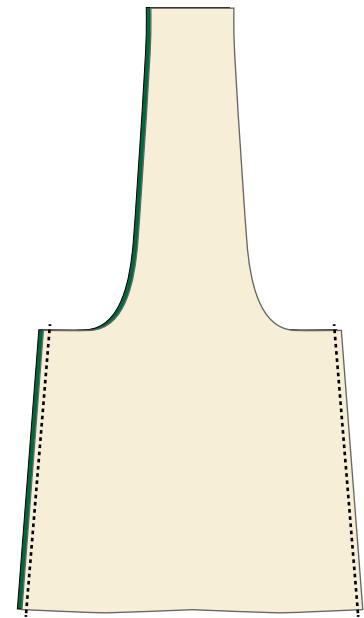


DIAGRAM 1

- Press open the front and back seams.
- Open the bag so the seams are in the center and the handles are at the sides.
- Iron just the bottom  $\frac{1}{2}$ " of each side to mark the sides.
- Take your Bottom Pieces and fold them in half lengthwise and iron  $\frac{1}{2}$ " at each edge of the fold. Fold in half width-wise and do the same. Now your reference points are marked. You can also mark these with pins or a disappearing marker.
- Place the Bottom Batting piece against the wrong side of the Bottom Bag Piece.
- Match the four marks on the bottom piece to the front, back and side seams of the bag body, pin together at those four points first. Pin the rest of the bottom to the bag body. (Diagram 2)
- Sew along the edge.
- Trim the batting seam allowances and clip the curves, being careful not to snip into the stitching.
- Turn right side out, press bottom seam.

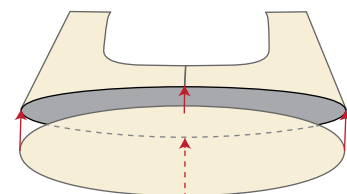


DIAGRAM 2

- Match and pin the lining bottom to the bag lining in the same manner.
- Mark (within seam allowance) 2½" on either side of the center back. Start sewing at first mark and stop sewing at the second mark, leaving a 5" space with which to flip the bag right side out later.
- Clip the curves of lining bottom, being careful not to snip into the stitching.
- Place the bag exterior into the bag lining, right sides together. Match edges and pin.
- Sew along the top of the bag, front and back, stopping 1½" before the ends of the handles. (Diagram 3)
- Clip the curves and trim the batting.

### Attaching the Snap

- Mark 1½" from the edge of the center front and center front of lining (seams mark centers).
- Follow package directions to attach the snap at the marks.
- (optional) Cut a little square of batting and place it against the back of the fabric over snap prongs (before folding down) for extra support.

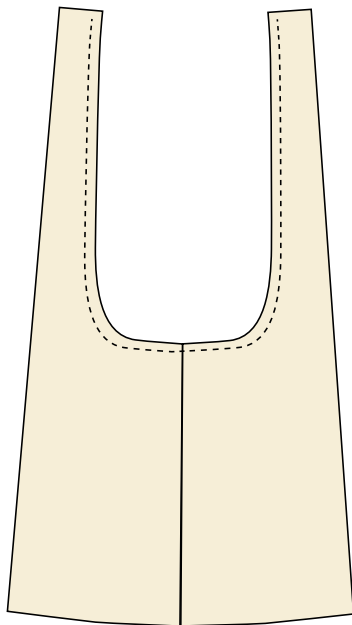


DIAGRAM 3

### Joining the Strap

- You may be familiar with this technique, it is the same technique you would use to join shoulder straps on a fully lined bodice.
- Read through all the instructions and if it's your first time doing this technique baste stitch or safety pin edges together, flip right side out to check that you didn't flip a strap, and if it's right then go ahead and sew.
- Take one strap and turn it right side out, only the strap, leave the body wrong side out. Let the end of the strap peek through the opening. Check to make sure the strap is not flipped. (Diagram 4)

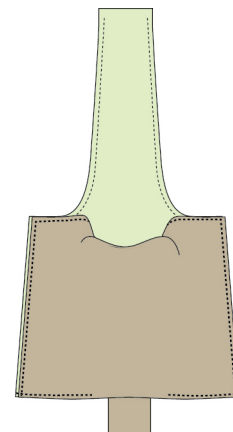


DIAGRAM 4

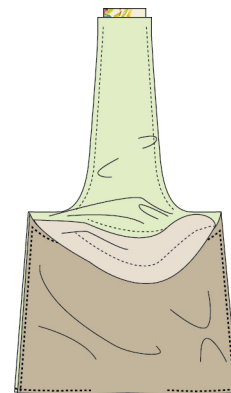


DIAGRAM 5

- XX



- Now comes the best part! Flip the bag right side out through the opening in the lining.
- Slip-stitch the lining opening closed.
- Press the bag.
- (Optional) Topstitch  $\frac{1}{4}$ " away from the top edge & strap edges.
- Most important step: Enjoy your new bag!



- Grab the inside of the inner strap and pull it through the outer strap several inches until all unsewn edges lay flat.
- Press the ends open and pin sides.
- Sew the unsewn sides of the strap. (Diagram 7)



artgalleryfabrics.com

NOTE: While all possible care has been taken to ensure the accuracy of this pattern, We are not responsible for printing errors or the way in which individual work varies. Please read instructions carefully before starting the construction of this quilt. If desired, wash and iron your fabrics before starting to cut.



artgalleryfabrics.com



# ach from & Batting







- 
- 
- 
- 
- 

- 
- 
- 
- 
- 

