

|||||



Stardust

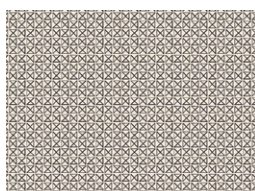
BLOCKS DESIGNED BY AGFstudio

luna & laurel

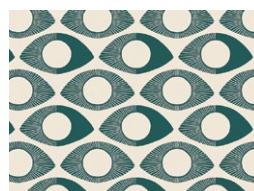
FABRICS DESIGNED BY AGF STUDIO



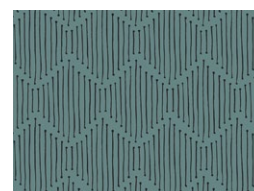
LUL-28500
TINTED BLOOMS



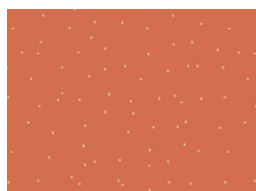
LUL-28501
INFINITY REFLECTIONS



LUL-28502
VISIONS WOODBLOCK



LUL-28507
MINDFUL PATHS



LUL-28504
SOLASTA SPECKS



LUL-28505
EYE SEE YOU DAY



LUL-28506
ESOTERIC ALIGNMENT



LUL-28508
LAUREL DARING



LUL-28510
STARDUST



LUL-28511
LAUREL MYSTIC



FEEL THE DIFFERENCE © 2020 Courtesy of Art Gallery Quilts LLC. All Rights Reserved.



FE-505
DEEP OCEAN

Stardust

FINISHED SIZE | 12" x 12"

FABRIC REQUIREMENTS

Block 1

Fabric A	LUL-28510	$\frac{3}{8}$ Yd.
Fabric B	LUL-28507	F8.
Fabric C	LUL-28501	F8.
Fabric D	FE-505	F8.
Fabric E	LUL-28502	F8.

Block 2

Fabric A	LUL-28501	$\frac{3}{8}$ Yd.
Fabric B	LUL-28510	F8.
Fabric C	LUL-28511	F8.
Fabric D	LUL-28506	F8.
Fabric E	FE-505	F8.

Block 3

Fabric A	LUL-28511	$\frac{3}{8}$ Yd.
Fabric B	LUL-28500	F8.
Fabric C	FE-505	F8.
Fabric D	LUL-28505	F8.
Fabric E	LUL-28506	F8.

Block 4

Fabric A	LUL-28507	$\frac{3}{8}$ Yd.
Fabric B	LUL-28501	F8.
Fabric C	LUL-28510	F8.
Fabric D	LUL-28504	F8.
Fabric E	LUL-28508	F8.

CUTTING DIRECTIONS

$\frac{1}{4}$ " seam allowances are included.
WOF means width of fabric.

- Twelve (12) $2\frac{1}{2}$ " squares from fabric **A**.
- Two (2) $12\frac{1}{2}$ " x $3\frac{1}{2}$ " rectangles from fabric **A**.
- Two (2) $18\frac{1}{2}$ " x $3\frac{1}{2}$ " rectangles from fabric **A**.
- One (1) $5\frac{1}{4}$ " square from fabric **A**.
- One (1) 4" square from fabric **B**.
- Four (4) $2\frac{7}{8}$ " squares fabric **B**.
- Four (4) $2\frac{7}{8}$ " squares fabric **C**.
- One (1) $5\frac{1}{4}$ " square from fabric **D**.
- One (1) 4" square from fabric **D**.
- One (1) $4\frac{1}{2}$ " square from fabric **E**.

CONSTRUCTION

Sew all rights sides together with $\frac{1}{4}$ " seam allowance.

- In this project we will be using two different methods. **The 4 at the time HST**, and **The not - waste Flying Geese**

4 at a time HST Method:

- Start by placing one 4" square from fabric **B** and **D** right sides together.
- Leaving a $\frac{1}{4}$ " seam allowance sew all around the four edges of the square.
- Mark a diagonal line across the wrong side of fabric square.
- Using your rotary blade, cut the square following the drawn lines.
- Press each HST and trim to a $2\frac{1}{2}$ " square.

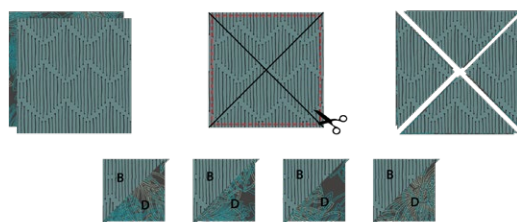


DIAGRAM 1

No - waste Flying Geese:

- Start by placing one (1) $2\frac{7}{8}$ " square from fabric **B** on each opposit corner of a $5\frac{1}{4}$ " square from fabric **A**. See diagram 2.
- Draw a diagonal line and sew $\frac{1}{4}$ " stitch on each side of the drawn line and cut through the line.

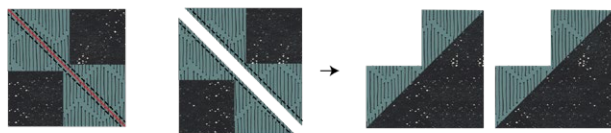


DIAGRAM 2

- Take another $2\frac{7}{8}$ " square from fabric **B**, place it on the right bottom corner.
- Draw a diagonal line on the square, and leaving $\frac{1}{4}$ " seam allowance sew on each side of the drawn line. See Fig 1.
- Cut through the line, press open, and repeat the same step with the other piece. See Fig 2. You will end up with four Flying Geese.



DIAGRAM 3

- Repeat the same method with one (1) $5\frac{1}{4}$ " square from fabric **D** and four (4) $2\frac{7}{8}$ " squares from fabric **C**.



DIAGRAM 4

Block Construction:

- For fabric placement and attachment follow the diagram below.

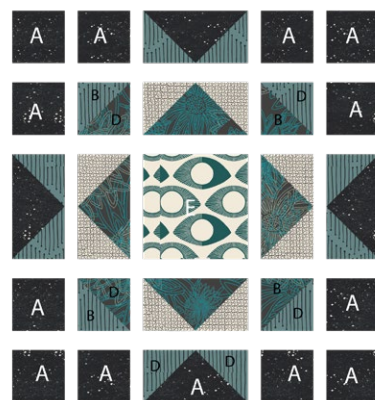


DIAGRAM 5

- Take a $12\frac{1}{2}$ " x $3\frac{1}{2}$ " rectangle from fabric **A**, and sew it to each side of sewn unit.

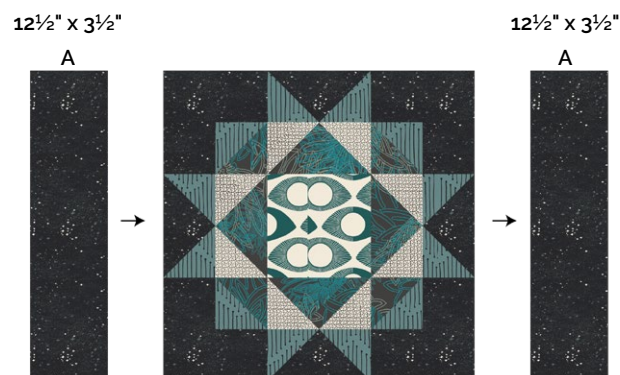


DIAGRAM 6

- Take a $18\frac{1}{2}$ " x $3\frac{1}{2}$ " rectangle from fabric **A**, and sew one on the top and the other one at the bottom of the sewn unit.

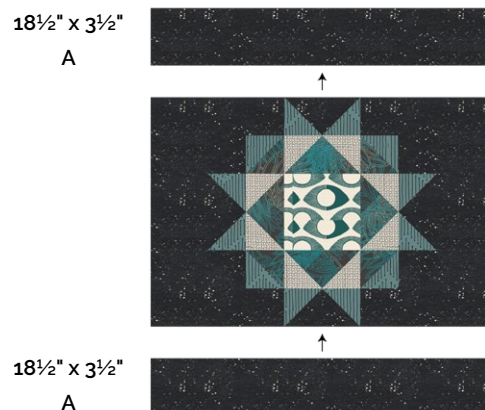


DIAGRAM 7

- Rotate the block 90° and trim to a 12" square.

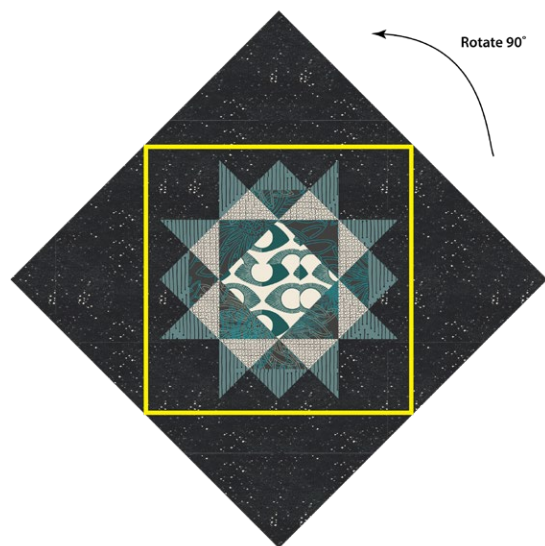


DIAGRAM 8

- Enjoy.



DIAGRAM 9

Congratulations
& enjoy



artgalleryfabrics.com

NOTE: While all possible care has been taken to ensure the accuracy of this pattern, We are not responsible for printing errors or the way in which individual work varies.

Please read instructions carefully before starting the construction of this quilt. If desired, wash and iron your fabrics before starting to cut.

© 2020 Courtesy of Art Gallery Quilts LLC. All Rights Reserved.