

# Rocky



# FUSIONS

by AGF

FREE PATTERN

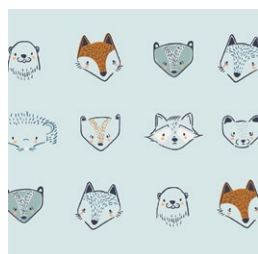
XXXXXXXXXXXXXXXXXXXX



# Rocky

DESIGNED BY AGFstudio

little  
FORESTER FUSION



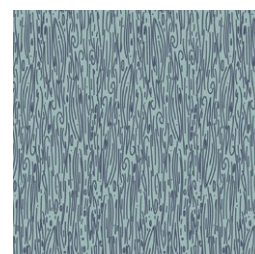
*FUS-LF-2204  
Furries Forester  
by AGF Studio*



*FUS-LF-2201  
Dew's Cloth-line  
Forester  
by Alexandra Bordallo*



*FUS-LF-2202  
Sova Forester  
by Jessica Swift*



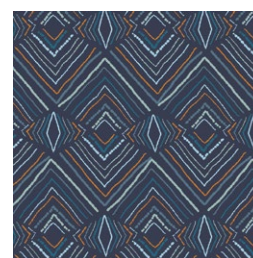
*FUS-LF-2203  
Wildwood Forester  
by Bonnie Christine*



*FUS-LF-2205  
Squirrels At Play  
Forester  
by Maureen Cracknell*



*FUS-LF-2206 Curious  
Paws Forester  
by AGF Studio*



*FUS-LF-2207  
Wavelength Forester  
by Jessica Swift*



ADDITIONAL BLENDERS FOR THIS PROJECT



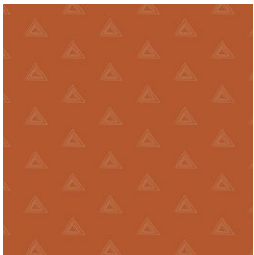
FE-526  
MOCHA



FE-503  
RUSSET ORANGE



FE-508  
AQUA HAZE



PRE-815  
DUSK ZIRCON



FINISHED SIZE | 11½" x 11"

## FABRIC REQUIREMENTS

### Block 1

Fabric <b>A</b>	FUS-LF-2207	¼ yd.
Fabric <b>B</b>	FUS-LF-2206	F8.
Fabric <b>C</b>	PRE-815	F8.
Fabric <b>D</b>	FE-503	F8.

### Block 2

Fabric <b>A</b>	FUS-LF-2206	¼ yd.
Fabric <b>B</b>	FE-526	F8.
Fabric <b>C</b>	FUS-LF-2201	F8.
Fabric <b>D</b>	FUS-LF-2207	F8.

### Block 3

Fabric <b>A</b>	FUS-LF-2205	¼ yd.
Fabric <b>B</b>	FUS-LF-2203	F8.
Fabric <b>C</b>	FUS-LF-2201	F8.
Fabric <b>D</b>	FUS-LF-2206	F8.

### Block 4

Fabric <b>A</b>	FUS-LF-2201	¼ yd.
Fabric <b>B</b>	FE-508	F8.
Fabric <b>C</b>	FE-503	F8.
Fabric <b>D</b>	FUS-LF-2202	F8.

## CUTTING DIRECTIONS

¼" seam allowances are included.  
WOF means width of fabric.

- One (1) 1⅞" square from fabric **A**.
- One (1) 2⅝" square from fabric **A**.
- One (1) 4⅞" square from fabric **A**.
- One (1) 7" x 2" rectangle from fabric **A**.
- One (1) 10" x 1" strip from fabric **A**.
- Two (2) 7½" x 1" strips from fabric **A**.
- One (1) 11" x 1" strip from fabric **A**.
- One (1) 11" x 1½" strip from fabric **A**.
- Two (2) 12" x 1" strips from fabric **A**.
- One (1) 4⅞" square from fabric **B**.
- Two (2) 4½" x 3½" rectangles from fabric **B**.
- One (1) 2⅝" square from fabric **C**.
- One (2) 1⅞" squares from fabric **C**.
- Two (2) 3" x 1" rectangles from fabric **C**.
- One (1) 1⅞" square from fabric **D**.
- Two (2) 2" squares from fabric **D**.
- One (1) 8" x 1½" strip from fabric **D**.
- One (1) 7½" x 2" strip from fabric **D**.

## CONSTRUCTION

Sew all rights sides together with ¼" seam allowance.

### Half Square Triangle Construction (HST)

- Place one (1) 4⅞" square from fabric **A** and **B** facing right sides together.
- Mark a diagonal line on the wrong side of the square.
- Sew ¼" on both side of the drawn line.
- Using a rotary blade, cut the square into two triangles.
- Trim each HST to a 4½" square.

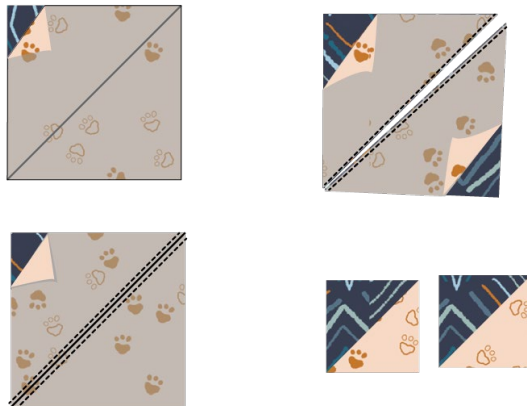


DIAGRAM 1

- Repeat the HST construction with one (1) 2 $\frac{7}{8}$ " squares from fabrics **A** and **C**.
- Trim each HST to a 2 $\frac{1}{2}$ " square.

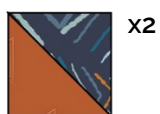


DIAGRAM 2

- Repeat the HST construction with one (1) 1⅞" squares from fabrics **C** and **D**.
- Trim each HST to a 1½" square.



DIAGRAM 3

- Repeat the HST construction with one (1) 1 7/8" squares from fabrics **A** and **C**.
- Trim each HST to a 1" square.



DIAGRAM 4



- Place one (1) 2" square from fabric **D** on the top right corner of one (1) 4½" x 1 ½" rectangle of fabric **B**.
- Mark a diagonal line from the top left corner to the bottom right corner of the 2" square from fabric **D**.
- Sew through the drawn line and cut excess fabric, leaving ¼" seam allowance.
- Press open.

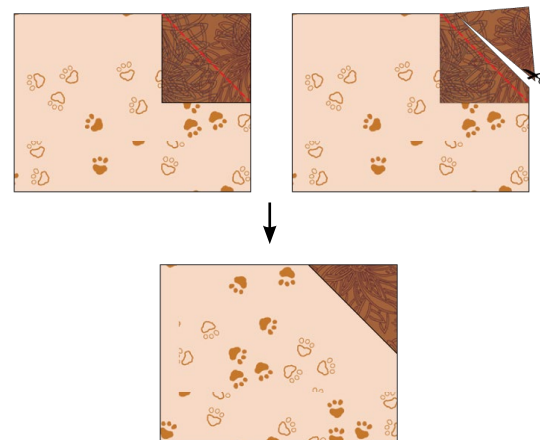


DIAGRAM 5

- Join one (1) 4½" **A-B** HST to the bottom of the sewn unit.

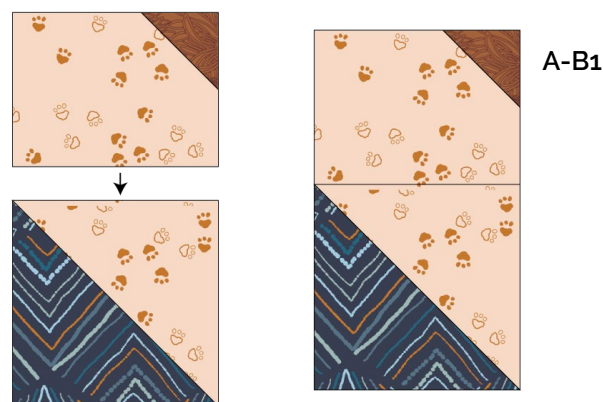
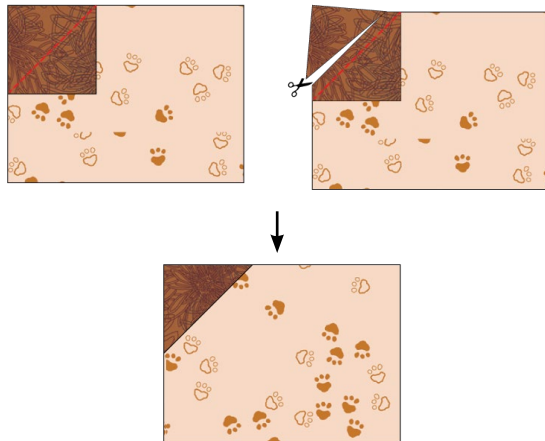


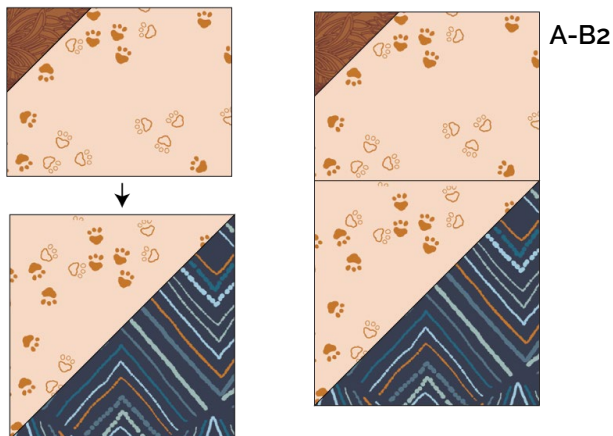
DIAGRAM 6



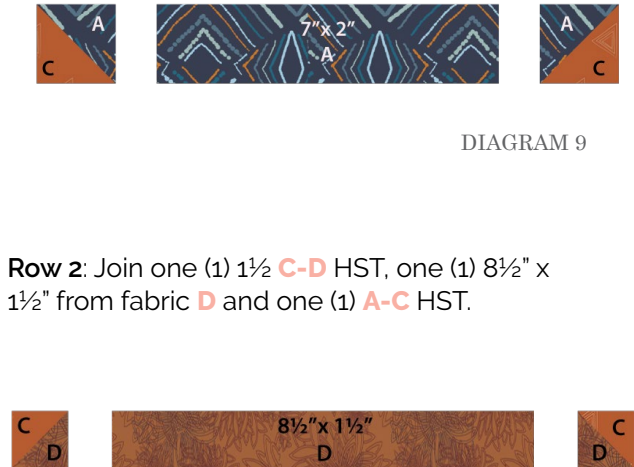
- Place one (1) 2" square from fabric **D** on the top left corner of one (1) 4½" x 1 ½" rectangle of fabric **B**.
- Draw a diagonal line from the top right corner to the bottom left corner of the 2" square from fabric **D**.
- Sew through the drawn line and cut excess fabric, leaving ¼" seam allowance.
- Press open.



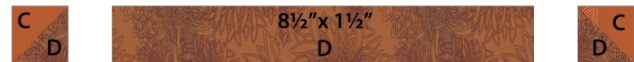
- Join one (1) 4½" **A-B** HST to the bottom of the sewn unit.



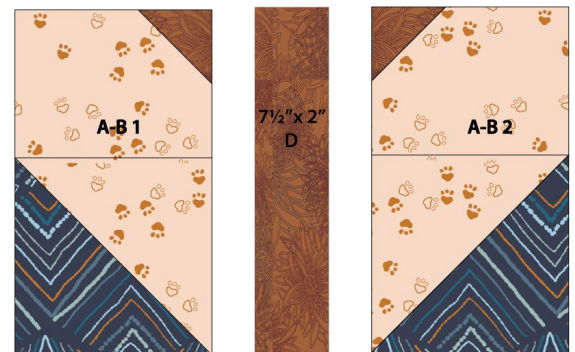
- **Row 1:** Join one (1) 2½ **A-C** HST, one (1) 7" x 2" from fabric **A** and one (1) **A-C** HST.



- **Row 2:** Join one (1) 1½ **C-D** HST, one (1) 8½" x 1½" from fabric **D** and one (1) **A-C** HST.



- **Row 3:** Join one (1) A-B1, one (1) 7½" x 2" from fabric **D** and one (1) A-B2.



- Join one (1) 10" x 1" strip from fabric **A**, Row 1, 2 and 3.

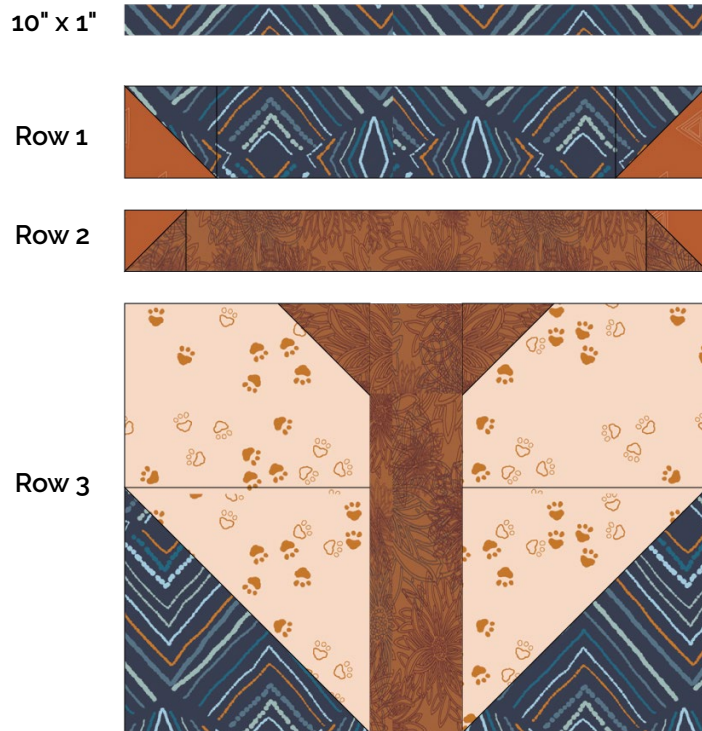


DIAGRAM 12

- Join one (1) 1" **A-C** HST, one (1) 3" x 1" strip from fabric **C** and one (1) 7½" x 1" strip from fabric **A**. Pay attention to the direction of the **A-C** HST.



DIAGRAM 13

- Join one (1) 1" **A-C** HST, one (1) 3" x 1" strip from fabric **C** and one (1) 7½" x 1" strip from fabric **A**. Pay attention to the direction of the **A-C** HST.



DIAGRAM 14

- Sew one (1) A-C2 to the left and one (1) A-C1 to the right of the sewn unit.



DIAGRAM 15



- Sew one (1) 11" x 1" strip from fabric **A** to the top and one (1) 11" x 1½" strip from fabric **A** to the bottom of the sewn unit.

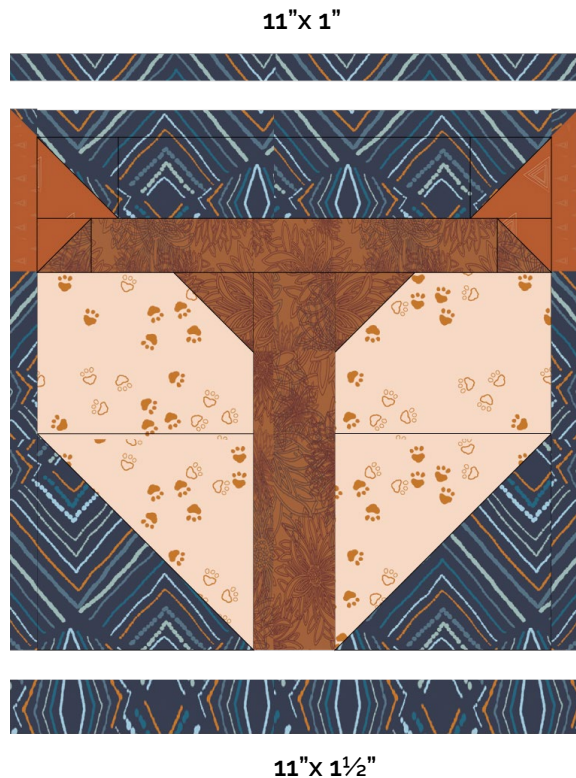


DIAGRAM 16

- Sew one (1) 12" x 1" strip from fabric **A** to the left and right of the sewn unit.

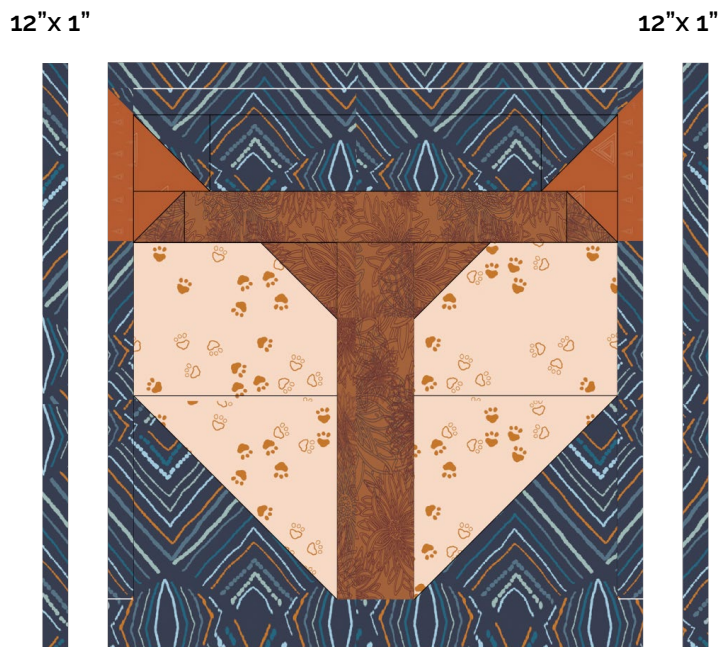


DIAGRAM 17

- For the eyes cut two (2) ½" squares of any dark fabric.
- For the nose, cut a 1" square of any pink fabric, then cut the square in diagonal and use one of the triangles for the nose.
- With "Steam A Seam" iron each piece as shown on diagram below.

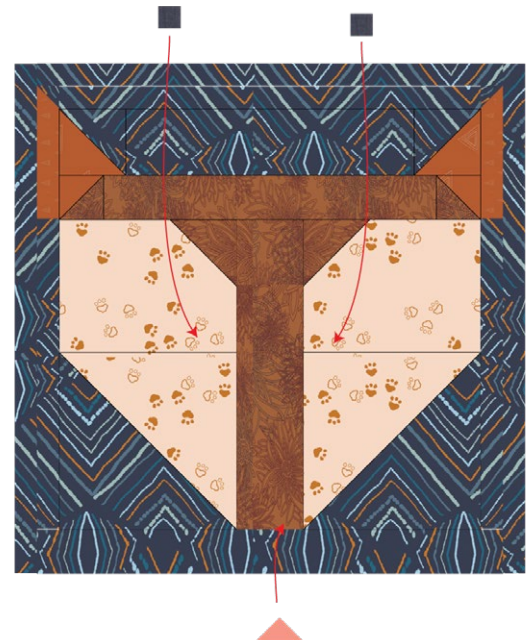


DIAGRAM 18

- Voila.



DIAGRAM 19



XXXXXXXXXXXXXXXXXXXXXXXXXXXXXXXXXXXX

*Congratulations  
& enjoy*

XXXXXXXXXXXXXXXXXXXXXXXXXXXXXXXXXXXX



[artgalleryfabrics.com](http://artgalleryfabrics.com)

NOTE: While all possible care has been taken to ensure the accuracy of this pattern, We are not responsible for printing errors or the way in which individual work varies.

Please read instructions carefully before starting the construction of this quilt. If desired, wash and iron your fabrics before starting to cut.

© 2020 Courtesy of Art Gallery Quilts LLC. All Rights Reserved.