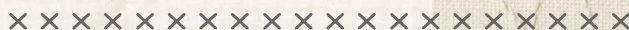




The
Reversible Tote



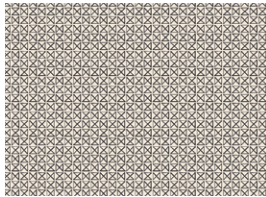


QUILT DESIGNED BY AGFstudio



luna & laurel

FABRICS DESIGNED BY AGF STUDIO



LUL-28501
INFINITY REFLECTIONS

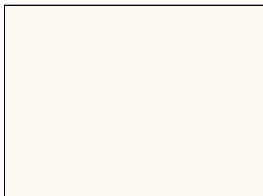


LUL-28503
PERFECTLY IMPERFECT



LUL-28513
STRIPED MUSE

ADDITIONAL BLENDERS FOR THIS PROJECT



PE-408
WHITE LINEN





FINISHED SIZE | 20" x 13" x 5"

FABRIC REQUIREMENTS

| | | |
|-----------------|-----------|-------------------|
| Fabric A | LUL-28503 | $\frac{7}{8}$ yd. |
| Fabric B | LUL-28513 | $\frac{7}{8}$ yd. |
| Fabric C | LUL-28501 | $\frac{1}{4}$ yd. |
| Fabric D | PE-408 | $\frac{7}{8}$ yd. |

| | | |
|-----------------------|--|-------|
| Extra Material | | |
| Fusible Interfacing | | 2 yd. |

CUTTING INSTRUCTIONS

$\frac{1}{4}$ " seam allowances are included.

- Two (2) 21" x 16" rectangles from fabric **A**.
- One (1) 21" x 11½" rectangle from fabric **A**.
- Two (2) 21" x 16" rectangles from fabric **B**.
- One (1) 21" x 11½" rectangle from fabric **B**.
- Four (4) 21" x 2" strips from fabric **C**.
- Two (2) 21" x 16" rectangles from fabric **D**.
- Two (2) 21" x 11½" rectangles from fabric **D**.
- Two (2) 21" x 16" rectangles from fusible interfacing.
- Two (2) 21" x 2" strips from fusible interfacing.

CONSTRUCTION

Sew all rights sides together with $\frac{1}{4}$ " seam allowance.

Bag Straps

- Take two (2) 21" x 2" strips from fabric **C** and interfacing. Interface the two strips.

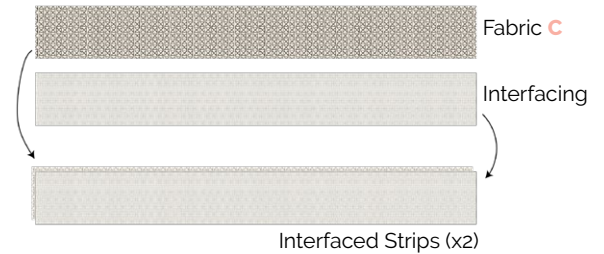


DIAGRAM 1

- Take two (2) 21" x 2" strips from fabric **C**, and two (2) interfaced strips.
- Align them face to face, stitch at $\frac{1}{4}$ " from the long edges.
- Turn them right side out and stitch at $\frac{1}{4}$ " from the edge.

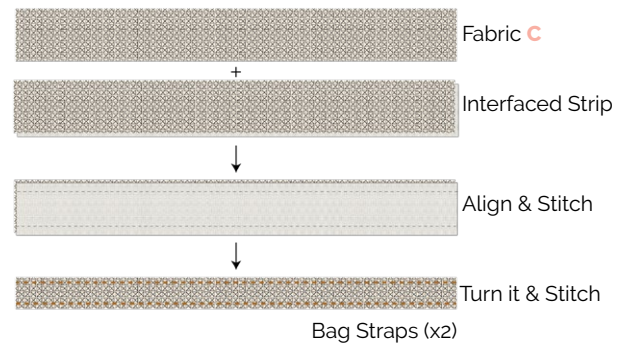
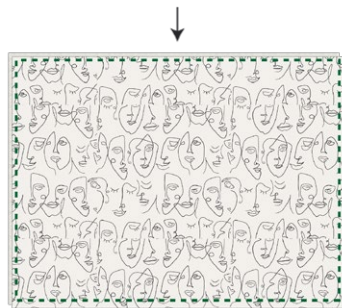
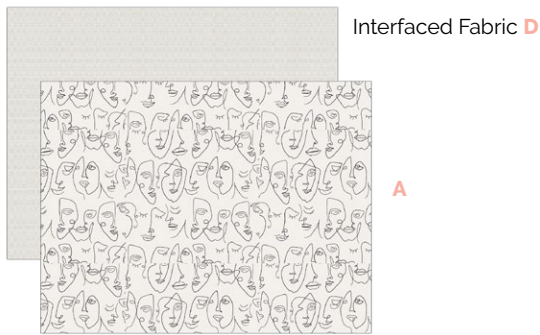


DIAGRAM 2

Pocket Foundation

- Take one (1) 21" x 11½" rectangle from fabrics **A** and **B**, and two (2) 21" x 11½" rectangles from fabric **D**.
- Align face to face rectangle **A** to **D** and **B** to **D**. Stitch at $\frac{1}{4}$ " from one long edge.
- Fold them right side out and edge stitch that side.

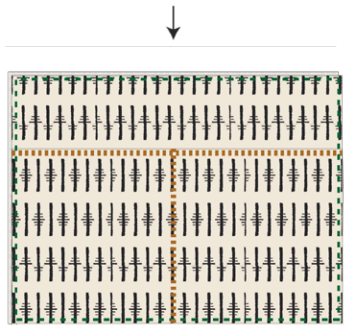
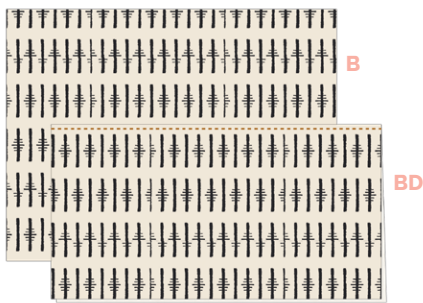


Back Tote Side 1

DIAGRAM 6

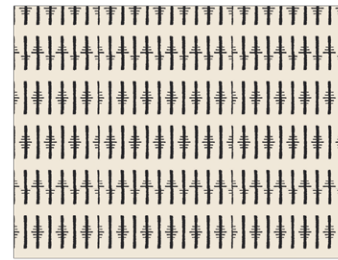
Bag Body Side 2

- Take (2) 21" x 16" rectangles from fabric **B**, and the **BD** pocket from diagram 3.
- Align them into two blocks following the diagram.
- Baste stitch around the edges to keep them in place.
- Make a vertical stitch in the center of the **BD** fabric to create (2) pockets.



Back Tote Side 2

DIAGRAM 7



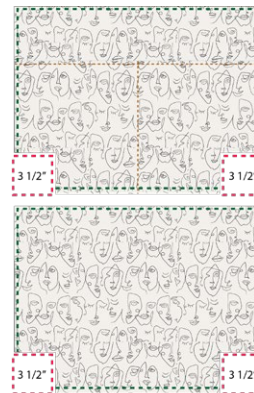
Front Tote Side 2

DIAGRAM 8

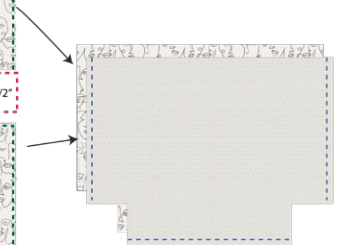
Assembling the Tote

- Cut a 3½" square on each of the bottom corners of the front and back pieces of side 1, and the front and back pieces of side 2.
- Align them face to face to sew the sides and bottom edges.

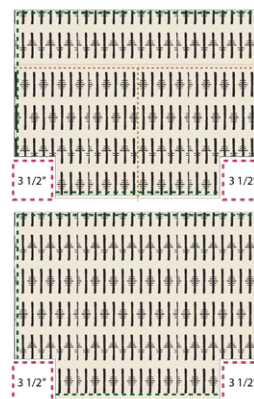
Front Tote Side 1



Back Tote Side 1



Back Tote Side 2



Front Tote Side 2

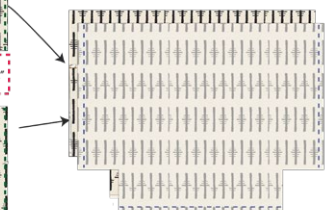


DIAGRAM 9

Boxed Corners

- For each corner, align the side seam with the bottom seam and stitch at $\frac{1}{4}$ ".

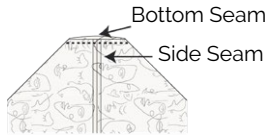


DIAGRAM 10

Assembling

- Take the two (2) straps and pin them to the right side of side 2.
- Make sure they are centered and 7" apart following diagram 11.
- Insert side 2 inside side 1 of the tote making sure they are face to face.
- Make sure the panel with the pocket of the side 1 is facing the panel without pocket of the side 2.

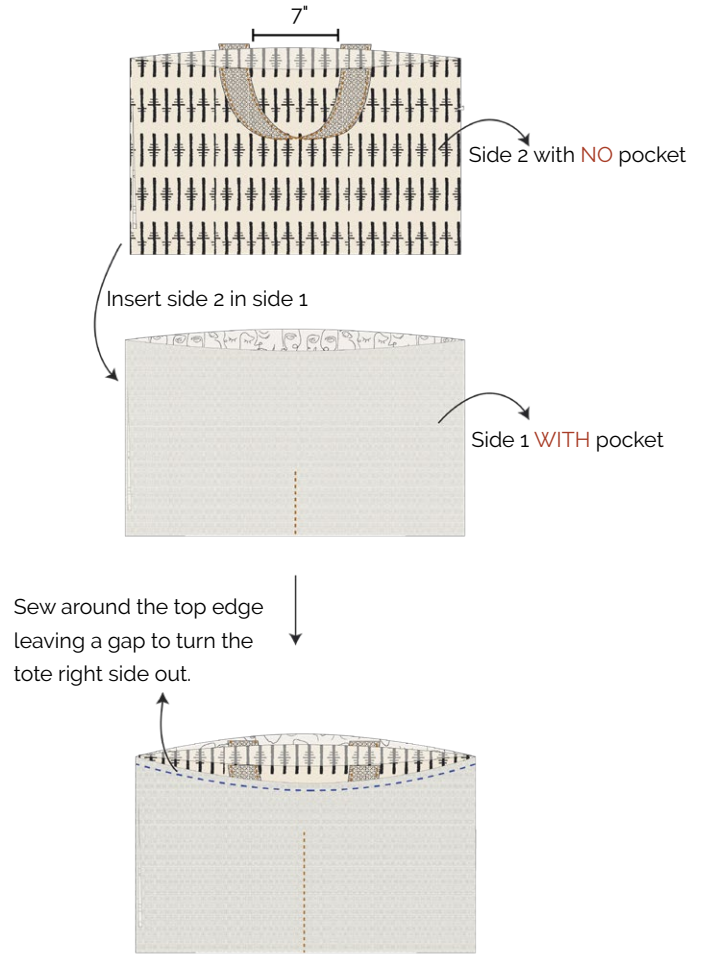


DIAGRAM 11



artgalleryfabrics.com

NOTE: While all possible care has been taken to ensure the accuracy of this pattern, We are not responsible for printing errors or the way in which individual work varies.

Please read instructions carefully before starting the construction of this quilt. If desired, wash and iron your fabrics before starting to cut.

© 2020 Courtesy of Art Gallery Quilts LLC. All Rights Reserved.