

A close-up of a quilted pillow featuring a geometric pattern of teal, black, and white triangles. The triangles are decorated with various patterns: some have white flowers with orange centers, some have black and white vertical stripes, and some have a dark background with white stars. The pillow is resting on a dark surface.

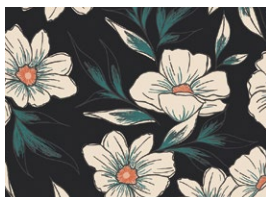


DESIGNED BY AGFstudio

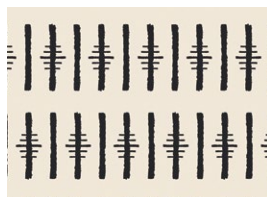


luna & laurel

FABRICS DESIGNED BY AGF STUDIO



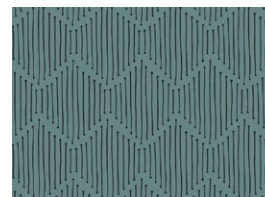
LUL-28500
TINTED BLOOMS



LUL-28513
STRIPED MUSE



LUL-28510
STARDUST



LUL-28507
MINDFUL PATHS



FEEL THE DIFFERENCE © 2020 Courtesy of Art Gallery Quilts LLC. All Rights Reserved.





FINISHED SIZE | 24" x 24"

FABRIC REQUIREMENTS

Fabric A	LUL-28500	$\frac{3}{8}$ yd.
Fabric B	LUL-28513	FQ.
Fabric C	LUL-28510	Fat 8.
Fabric D	LUL-28507	$1\frac{1}{2}$ yds.

BACKING FABRIC
LUL-28507 (Included)

CUTTING DIRECTIONS

$\frac{1}{4}$ " seam allowances are included.

- Nine (9) $8\frac{1}{2}$ " x $4\frac{1}{2}$ " rectangles from fabric **A**.
- Six (6) $8\frac{1}{2}$ " x $4\frac{1}{2}$ " rectangles from fabric **B**.
- Three (3) $8\frac{1}{2}$ " x $4\frac{1}{2}$ " rectangles from fabric **C**.
- Thirty six (36) $4\frac{1}{2}$ " squares from fabric **D**.
- Two (2) $24\frac{1}{2}$ " x 16" rectangles from fabric **D**.

CONSTRUCTION

Sew all rights sides together with $\frac{1}{4}$ " seam allowance.

Flying Geese Construction:

- Bring nine (9) $8\frac{1}{2}$ " x $4\frac{1}{2}$ " rectangles from fabric **A** and eighteen (18) $4\frac{1}{2}$ " squares from fabric **D**.
- Place one (1) fabric **D** square on top of the fabric **A** rectangle.
- Align it to the left side of the rectangle, right sides facing together and draw a diagonal line on top of the square, following the diagram below.



DIAGRAM 1

- Stitch on the drawn line.
- Trim excess fabric leaving $\frac{1}{4}$ " seam allowance and press open.



DIAGRAM 2

- Take another $4\frac{1}{2}$ " square from fabric **D** and align it on the right side of the fabric **A** rectangle, right sides facing together.
- Draw a diagonal line on top of the square.
- Stitch on the drawn line.
- Trim excess fabric leaving $\frac{1}{4}$ " seam allowance and press open.
- Repeat these steps to have a total of nine (9) **DAD** flying geeses.



DIAGRAM 3

- Following the flying geese instructions, take six (6) $8\frac{1}{2}$ " x $4\frac{1}{2}$ " rectangles from fabric **B**, three (3) $8\frac{1}{2}$ " x $4\frac{1}{2}$ " rectangles from fabric **C** and eighteen (18) $4\frac{1}{2}$ " squares from fabric **D**.
- Assemble six **DBD** flying geese and three **DCD**.



DIAGRAM 4

- Join three (3) **DAD**, and three (3) **DBD** following the order in the diagram below.
- Repeat the same construction to have a total of 2 columns.

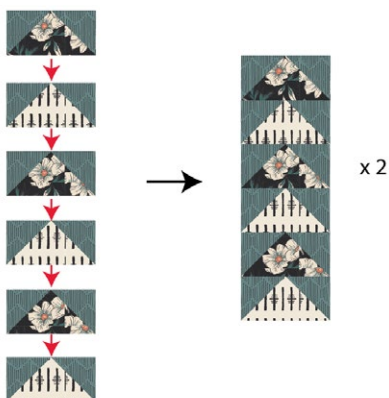


DIAGRAM 5

- Join three (3) **DAD**, and three (3) **DCD** following the order in the diagram below.

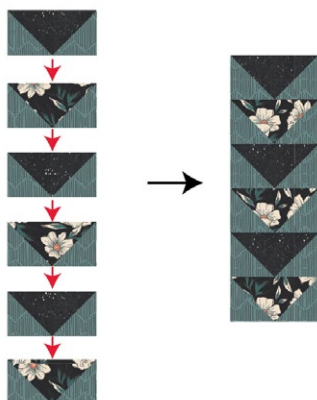


DIAGRAM 6

- Join the three columns creating your pillow top.

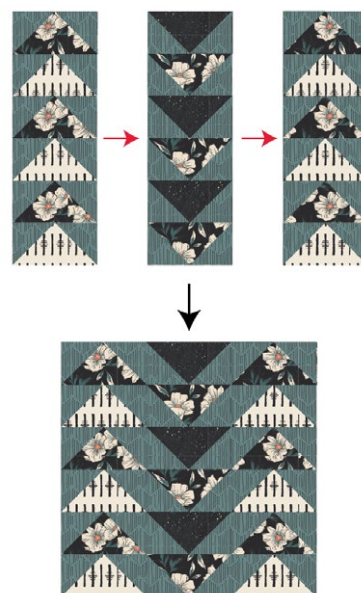


DIAGRAM 7

CREATING THE BACK PILLOW

Sew all rights sides together with $\frac{1}{4}$ " seam allowance. Press open.

- Take both $24\frac{1}{2}$ " x 16" rectangles from fabric **D**.
- Fold on the top edge $\frac{1}{2}$ " towards the wrong side of the fabric of one of the rectangle.
- Fold the same edge $\frac{1}{2}$ " again and edge stitch the fold in place to have a clean edge.
- Repeat the same but this time on the top edge of the other piece.
- Take the quilted pillow top and lay it flat right side up.
- Take one rectangle from fabric **D** and align it wrong side up to the right side of the pillow top.
- Take the other rectangle from fabric **D** and align it wrong side up to the left side of the pillow top.
- Pin the three pieces in place and sew around the edges at $\frac{1}{4}$ ".
- Clip the corners and flip the piece to the right side of the fabric.
- Fill the pillow with a 24" x 24" pillow form and enjoy!

XXXXXXXXXXXXXXXXXXXXXXXXXXXXXXXXXXXX

*Congratulations
& enjoy*

XXXXXXXXXXXXXXXXXXXXXXXXXXXXXXXXXXXX



artgalleryfabrics.com

NOTE: While all possible care has been taken to ensure the accuracy of this pattern, We are not responsible for printing errors or the way in which individual work varies.

Please read instructions carefully before starting the construction of this quilt. If desired, wash and iron your fabrics before starting to cut.

© 2020 Courtesy of Art Gallery Quilts LLC. All Rights Reserved.