

X
X
X
X
X
X
X
X
X
X
X
X
X

XXXXXXXXXXXXXXXXXXXX



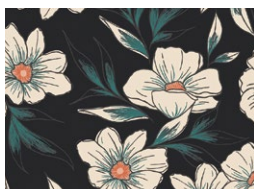
Daring

DESIGNED BY AGFstudio

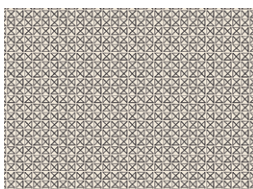


luna & laurel

FABRICS DESIGNED BY AGF STUDIO



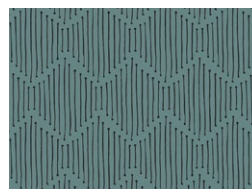
LUL-28500
TINTED BLOOMS



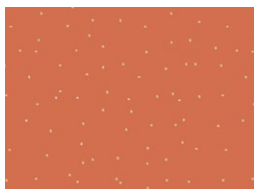
LUL-28501
INFINITY REFLECTIONS



LUL-28508
LAUREL DARING



LUL-28507
MINDFUL PATHS



LUL-28504
SOLASTA SPECKS



LUL-28510
STARDUST



FEEL THE DIFFERENCE © 2020 Courtesy of Art Gallery Quilts LLC. All Rights Reserved.



FINISHED SIZE | 38" x 10"

FABRIC REQUIREMENTS

Fabric A	LUL-28501	$\frac{3}{8}$ Yd.
Fabric B	LUL-28500	$\frac{1}{4}$ Yd.
Fabric C	LUL-28510	$\frac{3}{8}$ Yd.
Fabric D	LUL-28507	$\frac{1}{4}$ Yd.
Fabric E	LUL-28504	$\frac{1}{4}$ Yd.
Fabric E	LUL-28508	$\frac{3}{8}$ Yd.

BACKING FABRIC

Fabric **E** LUL-28504 (Included)

BINDING FABRIC

Fabric **C** LUL-28510 (Included)

CUTTING DIRECTIONS

$\frac{1}{4}$ " seam allowances are included.
WOF means width of fabric.

Fabric **A**.

- Twelve (16) template 1b.
- Two (2) template 2a.
- Two (2) template 2aa.
- Two (2) template 3a.
- Two (2) template 3aa.
- Two (2) $8\frac{1}{2}$ " x $1\frac{1}{2}$ " strips.
- Two (2) $8\frac{1}{2}$ " x $2\frac{1}{2}$ " strips.
- Two (2) $38\frac{1}{2}$ " x $1\frac{1}{2}$ " strips.
- Follow diagram 1 to arrange templates on fabric **A**.

XX

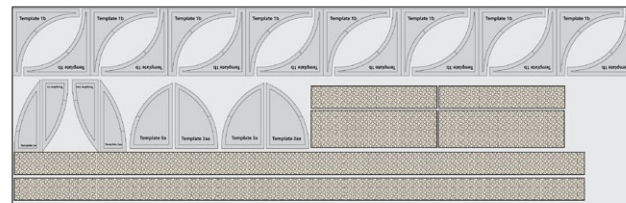


DIAGRAM 1

Fabric **B**.

- Four (4) template 1a.

Fabric **C**.

- Four (4) template 1a.

Three (3) $1\frac{1}{2}$ " x WOF. (Binding)

Fabric **D**.

- Two (2) template 2b.
- Two (2) template 2bb.

Fabric **E**.

- Two (2) template 3b.
- Two (2) template 3bb.

Fabric **F**.

- One (1) 40" x 12" (Backing)

CONSTRUCTION

Sew all rights sides together with $\frac{1}{4}$ " seam allowance.

Block 1

- Join one (1) template 1b from fabric **A**, with template 1a from fabric **B**.
- Repeat this step 3 more times, you should have a total of four unit A.

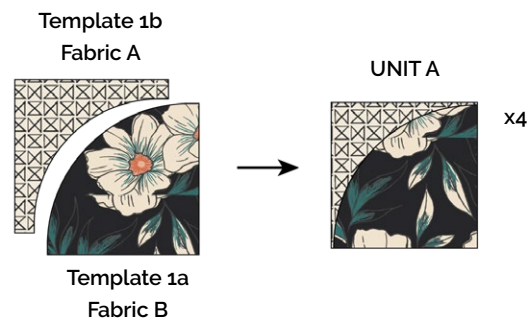


DIAGRAM 2

- Arrange all four units **A** as shown on diagram below.

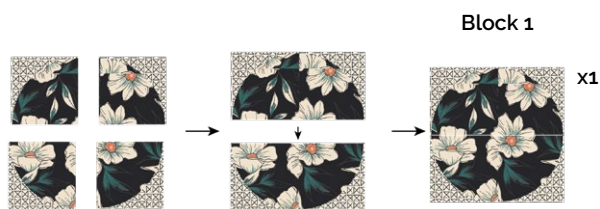


DIAGRAM 3

Block 2

- Join one (1) template 1b from fabric **A**, with template 1a from fabric **C**.
- Repeat this step 3 more times, you should have a total of four unit B.

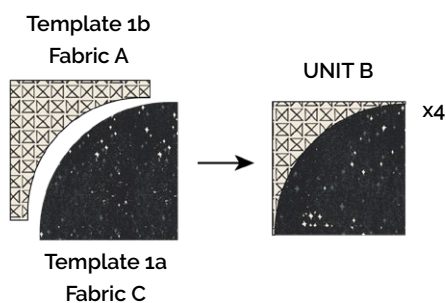


DIAGRAM 4

- Join two (2) units B as shown on the diagram below, repeat this step one more time.
- You should have a total of two blocks 2.

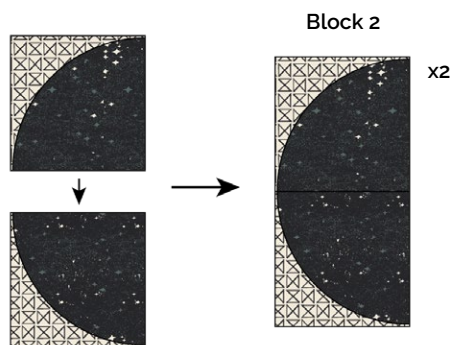


DIAGRAM 5

Block 3

- Join one (1) template 1b from fabric **A**, with template 2b from fabric **D**, and template 2a from fabric **A**.
- Repeat this step one more time, you should have a total of two unit C.

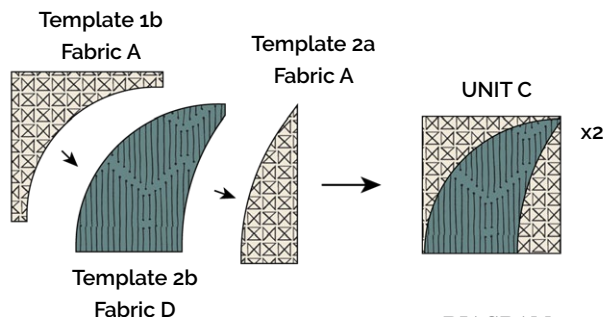


DIAGRAM 6

- Join one (1) template 2aa from fabric **A**, with template 2bb from fabric **D**, and template 1b from fabric **A**.
- Repeat this step one more time, you should have a total of two unit D.

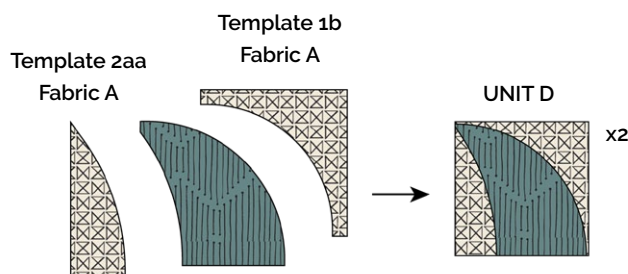


DIAGRAM 7

- Sew unit C and D . Repeat this step one more time.
- You should have a total of two block 3

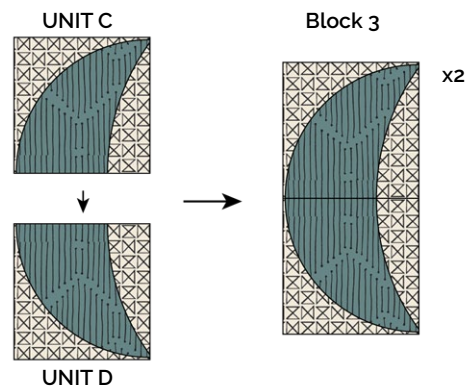


DIAGRAM 8

XXXXXXXXXXXXXXXXXXXXXXXXXXXX

- DIAGRAM 9

- DIAGRAM 10

- DIAGRAM 11

- DIAGRAM 12

- DIAGRAM 13

BINDING

Sew rights sides together.

- Sew one (1) $38\frac{1}{2}" \times 1\frac{1}{2}"$ strip from fabric **A** to the top and the other one at the bottom the sewn unit.

$38\frac{1}{2}" \times 1\frac{1}{2}"$
Fabric A



$38\frac{1}{2}" \times 1\frac{1}{2}"$
Fabric A

DIAGRAM 14

- Quilt as desired.



DIAGRAM 15

QUILT ASSEMBLY

Sew rights sides together.

- Place BACKING FABRIC on a large surface wrong side up. Stretch it with masking tape against that surface.
- Place BATTING on top of backing fabric.
- Place TOP on top of the batting with right side facing up. Smooth away wrinkles using your hands.
- Pin all layers together and baste with basting thread, using long stitches. You can also use safety pins to join the layers.
- Machine or hand quilt starting at the center and working towards the corners. Remember that quilting motifs are a matter of personal preference. Have fun choosing yours!
- After you finished, trim excess of any fabric or batting, squaring the quilt to proceed to bind it.

- Cut enough strips $1\frac{1}{2}"$ wide by the width of the fabric **C** to make a final strip 106" long. Start sewing the binding strip in the middle of one of the sides of the quilt, placing the strip right side down and leaving an approximated 5" tail. Sew with $\frac{1}{4}"$ seam allowance (using straight stitch), aligning the strip's raw edge with the quilt top's raw edge.

- Stop stitching $\frac{1}{4}"$ before the edge of the quilt (DIAGRAM B 1). Clip the threads. Remove the quilt from under the machine presser foot. Fold the strip in a motion of 45° and upward, pressing with your fingers (DIAGRAM B2). Hold this fold with your finger, bring the strip down in line with the next edge, making a horizontal fold that aligns with the top edge of the quilt (DIAGRAM B3). Start sewing at $\frac{1}{4}"$ of the border, stitching all the layers. Do the same in the four corners of the quilt.
- Stop stitching before you reach the last 5 or 6 inches. Cut the threads and remove the quilt from under the machine presser foot. Lay the loose ends of the binding flat along the quilt edge, folding the ends back on themselves where they meet. Press them together to form a crease. Using this crease as the stitching line, sew the two open ends of the binding with right sides together (you can help yourself marking with a pencil if the crease is difficult to see).
- Trim seam to $\frac{1}{4}"$ and press open. Complete the sewing. Turn binding to back of the quilt, turn raw edge inside and stitch by hand using blind stitch.

DIAGRAM B1

Stop stitching here

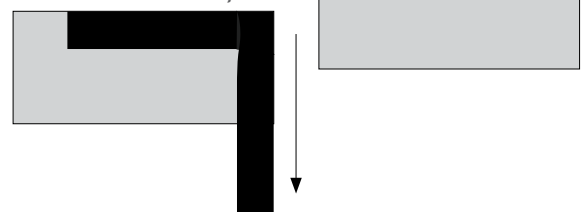


DIAGRAM B2

DIAGRAM B3

fold

45°



XXXXXXXXXXXXXXXXXXXXXXXXXXXXXXXXXXXX

*Congratulations
& enjoy*

XXXXXXXXXXXXXXXXXXXXXXXXXXXXXXXXXXXX



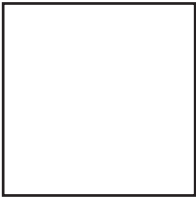
artgalleryfabrics.com

NOTE: While all possible care has been taken to ensure the accuracy of this pattern, We are not responsible for printing errors or the way in which individual work varies.

Please read instructions carefully before starting the construction of this quilt. If desired, wash and iron your fabrics before starting to cut.

© 2020 Courtesy of Art Gallery Quilts LLC. All Rights Reserved.

Printer Test



1" Square

