

Splashed



Splashed

DESIGNED BY *AGFstudio*



Aquarelle

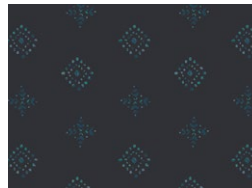
FABRICS DESIGNED BY KATARINA ROCCELLA



AQU-66758
PLEIN AIR BOUQUET

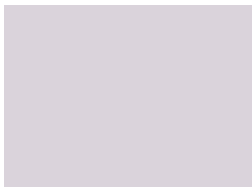


AQU-66752
ANEMONE STUDY MIDNIGHT



AQU-76756
RHOMBASTIC NEGATIVE

ADDITIONAL BLENDERS FOR THIS PROJECT



PE-470
LAVANDER WATER



PE-495
FIELD OF LAVENDER



FE-519
ICY BLUE



FE-508
AQUA HAZE



FE-543
LAVANDER HAZE



Splashed

FINISHED SIZE | 24½" x 24½"

FABRIC REQUIREMENTS

Fabric A	FE-519	¼ Yd.
Fabric B	FE-508	¼ Yd.
Fabric C	AQU-66758	1 ¼ Yd.
Fabric D	PE-470	¼ Yd.
Fabric E	PE-495	¼ Yd.
Fabric F	FE-543	¼ Yd.
Fabric G	AQU-66752	¼ Yd.
Fabric H	AQU-76756	¼ Yd.

BACKING FABRIC

Fabric C AQU-66758 (Included)

CUTTING DIRECTIONS

*¼" seam allowances are included.
WOF means width of fabric.*

- Twelve (12) 20½" x 1¼" strips from fabric A.
- Twelve (12) 20½" x 1¼" from fabric B.
- Twelve (12) 20½" x 1¼" from fabric C.
- Two (2) 25" x 17½" rectangles from fabric C.
- Twelve (12) 20½" x 1¼" from fabric D.
- Twelve (12) 20½" x 1¼" from fabric E.
- Twelve (12) 20½" x 1¼" from fabric F.
- Twelve (12) 20½" x 1¼" from fabric G.

x x

- Two (2) 12½" x 10" from fabric G.
- Twelve (12) 20½" x 1¼" from fabric H.

CONSTRUCTION

Sew all rights sides together with ¼" seam allowance.

- The pillow is made out of four (4) identical blocks.
- Each block will require three (3) identical sections.
- Each section will require one (1) stripe block from fabrics A, B, C, D, E, F, G, H.
- Join one (1) 20½" x 1¼" strip from fabric A -B-C-D-E-F-G-H and repeat the same step 11 more times. (See Diagram 1).

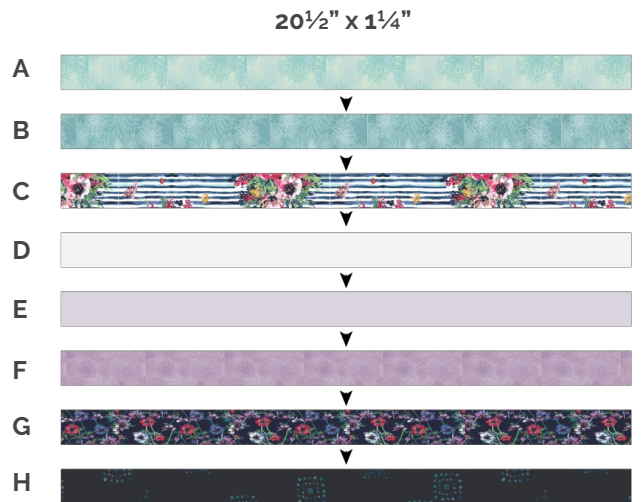


DIAGRAM 1

- You should end up with twelve (12) strip blocks of 20½" x 6½".



DIAGRAM 2

- Take three (3) strip blocks and sew them as shown on diagram below.
- Repeat this step 3 more times.

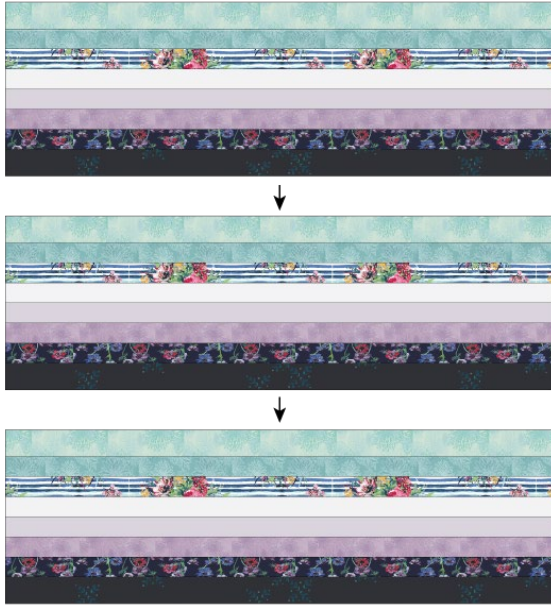


DIAGRAM 3

- Create a $12\frac{1}{2}$ " square template and place it on top of the previously sewn piece on point.
- Repeat this step with the other three (3) strip blocks.



DIAGRAM 4

x x

- Arrange the $12\frac{1}{2}$ " square blocks into two rows of two blocks each see diagram below.
- Sew by rows, and then sew the rows together.

Row 1



Row 2



DIAGRAM 5

- Quilt as desired.

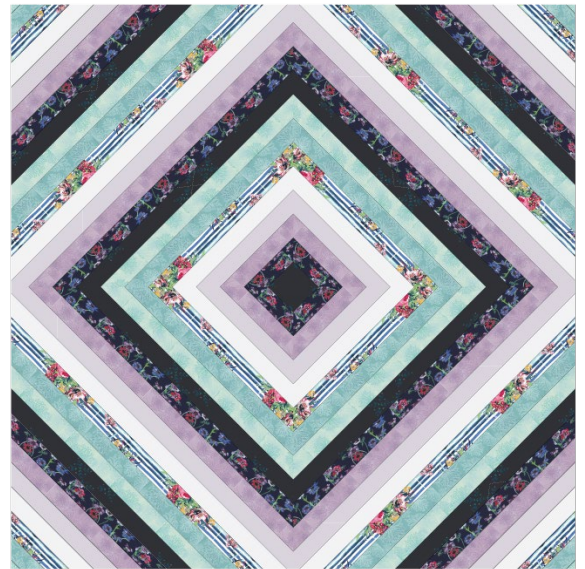


DIAGRAM 6

BACK OF THE PILLOW

*¼" seam allowances are included.
WOF means width of fabric.*

- Take both 25" x 17½" rectangles from fabric **C**.
- Fold on the top edge ½" towards the wrong side of the fabric of one of the rectangle.
- Fold the same edge ½" again and edgestitch the fold in place to have a clean edge.
- Repeat the same but this time on the top edge of the other piece.
- Take the quilted pillow top and lay it flat right side up.
- Take one rectangle from fabric **C** and align it wrong side up to the right side of the pillow top.
- Take the other rectangle from fabric **C** and align it wrong side up to the left side of the pillow top.
- Pin the three pieces in place and sew around the edges at ¼".
- Clip the corners and flip the piece to the right side of the fabric.
- Fill the pillow with a 24½" x 24½" pillow form and enjoy!

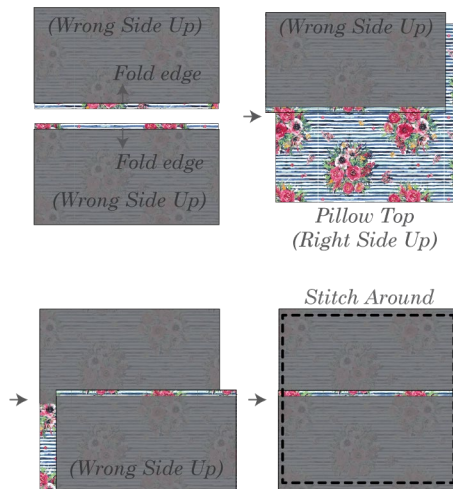


DIAGRAM 7

Congratulations
& enjoy



artgalleryfabrics.com

NOTE: While all possible care has been taken to ensure the accuracy of this pattern, We are not responsible for printing errors or the way in which individual work varies.

Please read instructions carefully before starting the construction of this quilt. If desired, wash and iron your fabrics before starting to cut.

© 2020 Courtesy of Art Gallery Quilts LLC. All Rights Reserved.