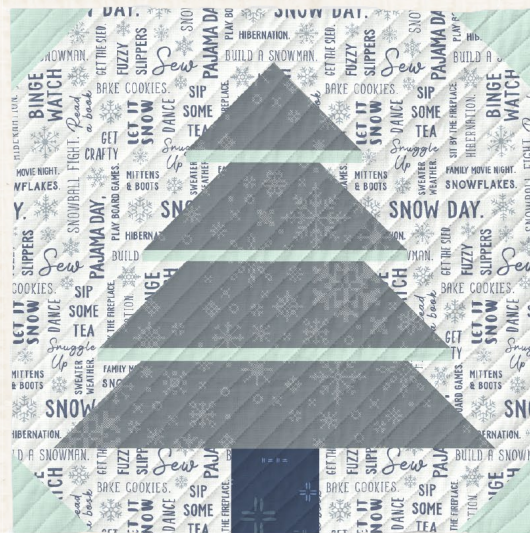




Winter Wonderland



ANGLES

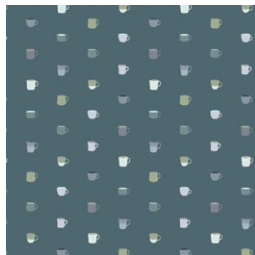
Winter Wonderland



BLOCKS DESIGNED BY *AGFstudio*



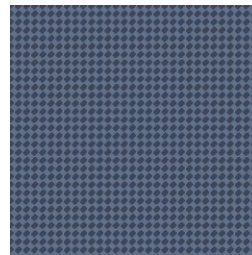
FABRICS DESIGNED BY MISTER DOMESTIC



SND-65407
DRINK IT UP



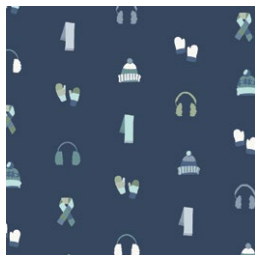
SND-65406
LET IT SNOW



SND-65401
CUDDLED UP



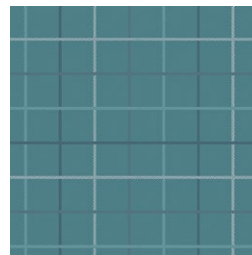
SND-65400
BUILDING A SNOWMAN



SND-65403
BUNDLED UP DIM



SND-65408
DOWN THE HILL



SND-65409
WINTRY CHECK SOFT



SND-65404
ICE CRYSTALS



SND-65410
SNOWBOUND



ADDITIONAL BLENDERS FOR THIS PROJECT



PE-500
OCEAN FOG



PE-501
NORTHERN WATERS



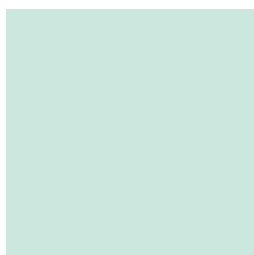
PE-467
NIGHT SEA



PE-465
DENIM BLUE



DSE-708
INDIGO SKY



PE-451
ICY MINT

Winter Wonderland

FINISHED SIZE | 12" x 12"

FABRIC REQUIREMENTS

Block 1

| | | |
|-----------------|-----------|--------|
| Fabric A | SND-65407 | Fat 8. |
| Fabric B | SND-65406 | FQ. |
| Fabric C | SND-65401 | Fat 8. |
| Fabric D | PE-500 | Fat 8. |

Block 2

| | | |
|-----------------|-----------|--------|
| Fabric A | SND-65401 | Fat 8. |
| Fabric B | SND-65400 | FQ. |
| Fabric C | PE-501 | Fat 8. |
| Fabric D | PE-467 | Fat 8. |

Block 3

| | | |
|-----------------|-----------|--------|
| Fabric A | SND-65403 | Fat 8. |
| Fabric B | SND-65408 | FQ. |
| Fabric C | SND-65409 | Fat 8. |
| Fabric D | PE-465 | Fat 8. |

Block 4

| | | |
|-----------------|-----------|--------|
| Fabric A | SND-65404 | Fat 8. |
| Fabric B | SND-65410 | FQ. |
| Fabric C | DSE-708 | Fat 8. |
| Fabric D | PE-451 | Fat 8. |

CUTTING DIRECTIONS

*¼" seam allowances are included.
WOF means width of fabric.*

- One (1) 10½" x 2½" rectangle from fabric **A**.
- One (1) 8½" x 2½" rectangle from fabric **A**.
- One (1) 6½" x 2½" rectangle from fabric **A**.
- One (1) 4½" x 2½" rectangle from fabric **A**.
- Two (2) 5½" x 2½" rectangle from fabric **B**.
- Two (2) 4½" x 2½" rectangles from fabric **B**.
- Two (2) 3½" x 2½" rectangles from fabric **B**.
- One (1) 12½" x 1¾" rectangle from fabric **B**.
- Ten (10) 2½" x 2½" squares from fabric **B**.
- Two (2) 1½" x 2½" rectangle from fabric **B**.
- Two (2) 4½" x ¾" strip from fabric **B**.
- Two (2) 3½" x ¾" strip from fabric **B**.
- Two (2) 2½" x ¾" strip from fabric **B**.
- One (1) 2½" square from fabric **C**.
- Four (4) 2½" squares from fabric **D**.
- One (1) 8½" x ¾" strip from fabric **D**.
- One (1) 6½" x ¾" strip from fabric **D**.
- One (1) 4½" x ¾" strip from fabric **D**.

CONSTRUCTION

Sew all rights sides together with $\frac{1}{4}$ " seam allowance.

- Take one $10\frac{1}{2}$ " x $2\frac{1}{2}$ " rectangle from fabric **A** and two $2\frac{1}{2}$ " squares from fabric **B**.
- Place one square from fabric **B** on each side of fabric **A** rectangle, right sides facing each other.
- Sew on the diagonal and trim excess fabric leaving $\frac{1}{4}$ " seam allowance.
- Press open.

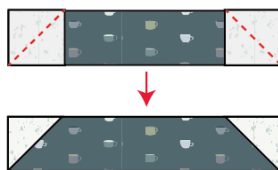


DIAGRAM 1

- Take two $1\frac{1}{2}$ " x $2\frac{1}{2}$ " rectangles from fabric **A** and join each piece on each side of the **AB** strip. This will be your Strip Set 1.



Strip Set 1

DIAGRAM 2

- Take one $8\frac{1}{2}$ " x $2\frac{1}{2}$ " rectangle from fabric **A** and two $2\frac{1}{2}$ " squares from fabric **B**.
- Place one square from fabric **B** on each side of fabric **A** rectangle, right sides facing each other.
- Sew on the diagonal and trim excess fabric leaving $\frac{1}{4}$ " seam allowance.
- Press open.

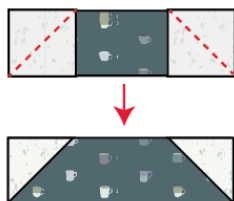


DIAGRAM 3

- Take two $3\frac{1}{2}$ " x $2\frac{1}{2}$ " rectangles from fabric **A** and join each piece on each side of **AB** strip. This will be your Strip Set 2



Strip Set 2

DIAGRAM 4

- Take one $6\frac{1}{2}$ " x $2\frac{1}{2}$ " rectangle from fabric **A** and two $2\frac{1}{2}$ " squares from fabric **B**.
- Place one square from fabric **B** on each side of fabric **A** rectangle, right sides facing each other.
- Sew on the diagonal and trim excess fabric leaving $\frac{1}{4}$ " seam allowance.
- Press open.

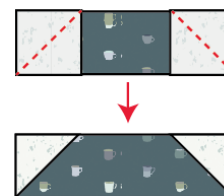
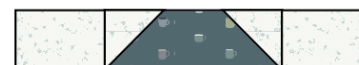


DIAGRAM 5

- Take two $3\frac{1}{2}$ " x $2\frac{1}{2}$ " rectangles from fabric **A** and join each piece on each side of **AB** strip. This will be your Strip Set 3.



Strip Set 3

DIAGRAM 6

- Take one $4\frac{1}{2}$ " x $2\frac{1}{2}$ " rectangle from fabric **A** and two $2\frac{1}{2}$ " squares from fabric **B**.
- Place one square from fabric **B** on the left side of fabric **A** rectangle, right sides facing each other.
- Sew on the diagonal and trim excess fabric leaving $\frac{1}{4}$ " seam allowance. Press open.
- Place the remaining $2\frac{1}{2}$ " square from fabric **B** on the right side of fabric **A** rectangle, right sides facing each other.

- Sew on the diagonal and trim excess fabric leaving $\frac{1}{4}$ " seam allowance.
- Press open.

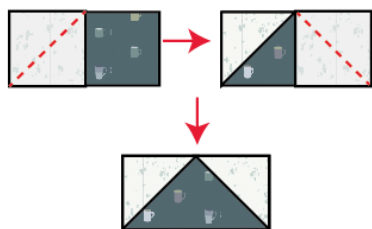


DIAGRAM 7

- Take two $4\frac{1}{2}$ " x $2\frac{1}{2}$ " rectangles from fabric **A** and join each piece on each side of **AB** strip. This will be your Strip Set 4.



DIAGRAM 8

- Take two $4\frac{1}{2}$ " x $\frac{3}{4}$ " strips from fabric **B** and join one strip on each side of one $4\frac{1}{2}$ " x $\frac{3}{4}$ " strip from fabric **D**. This will be Strip Set 5.



DIAGRAM 9

- Join two $3\frac{1}{2}$ " x $\frac{3}{4}$ " strips from fabric **B** and on each side of one $6\frac{1}{2}$ " x $\frac{3}{4}$ " strip from fabric **D**. This will be Strip Set 6.



DIAGRAM 10

- Take two $2\frac{1}{2}$ " x $\frac{3}{4}$ " strips from fabric **B** and join one strip on each side of one $8\frac{1}{2}$ " x $\frac{3}{4}$ " strip from fabric **D**. This will be Strip Set 7.



- Now, take two $5\frac{1}{2}$ " x $2\frac{1}{2}$ " rectangles from fabric **A** and join each rectangle on each side of one $2\frac{1}{2}$ " square from fabric **C**.
- This will be Strip Set 8.



DIAGRAM 11

- Sew your block by rows, following the diagram below.

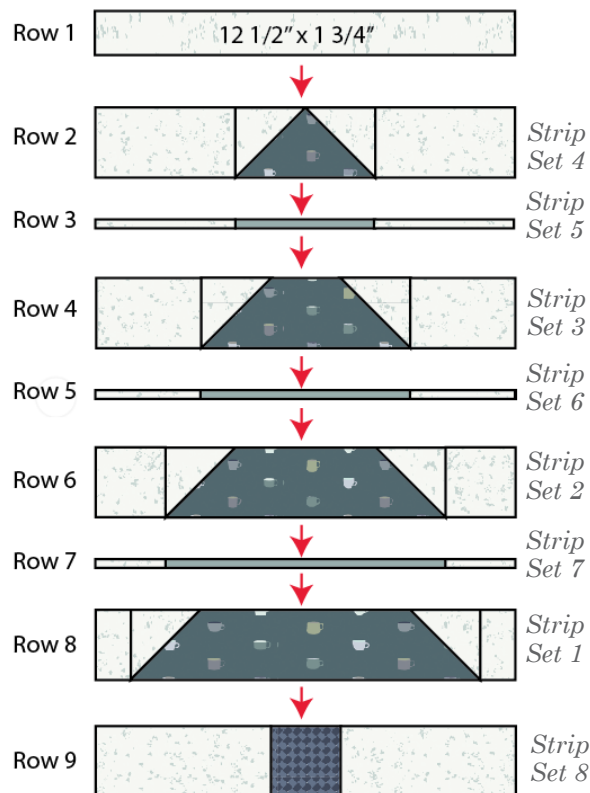


DIAGRAM 12

- Place four 2½" squares from fabric **D** on each corner of the block, right sides facing each other.
- Sew at the diagonal and trim excess fabric, following the diagram below. Press open.

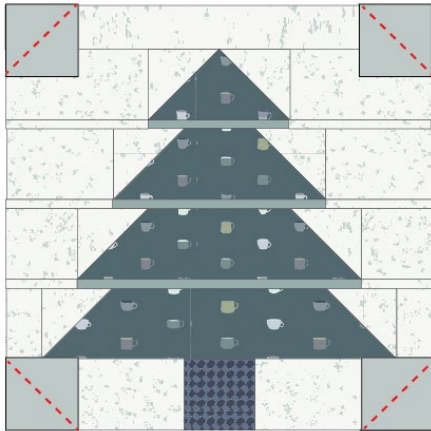


DIAGRAM 12

XXXXXXXXXXXXXXXXXXXXXXXXXXXXXXXXXXXX

*Congratulations
& enjoy*

XXXXXXXXXXXXXXXXXXXXXXXXXXXXXXXXXXXX



artgalleryfabrics.com

NOTE: While all possible care has been taken to ensure the accuracy of this pattern, We are not responsible for printing errors or the way in which individual work varies.

Please read instructions carefully before starting the construction of this quilt. If desired, wash and iron your fabrics before starting to cut.

© 2020 Courtesy of Art Gallery Quilts LLC. All Rights Reserved.