

TIME *Wheel*



TIME *Wheel*

QUILT DESIGNED BY AGFstudio

Kismet

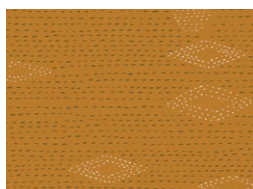
FABRICS DESIGNED BY SHARON HOLLAND



FATE



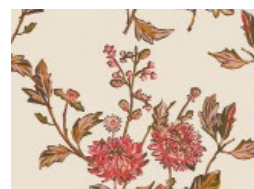
KSM-73300
FLEURON HAVEN



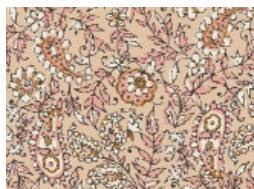
KSM-73301
KANTHA MICA



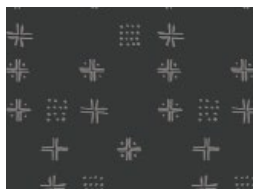
KSM-73302
BURGEON FORTH



KSM-73304
CUT FLOWERS FORTUNE



KSM-73305
INDIA INK PARCHMENT



KSM-73306
MUDCLOTH SABLE

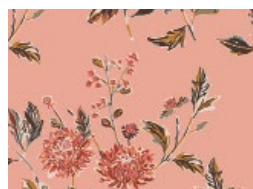


KSM-73308
DASHING CINNAMON

DESTINY



KSM-83301
KANTHA CHARCOAL



KSM-83304
CUT FLOWERS FAVOR



KSM-83305
INDIA INK IMPRESSION



KSM-83306
MUDCLOTH BERRIES



KSM-83307
IKAT DIAMOND POSH



KSM-83309
BUSY BEE KARMA



FEEL THE DIFFERENCE © 2020 Courtesy of Art Gallery Quilts LLC. All Rights Reserved.

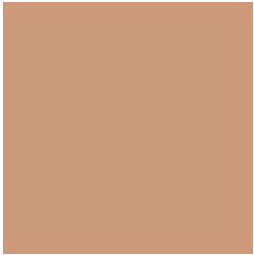
ADDITIONAL BLENDERS FOR THIS PROJECT



PE-422
CHOCOLATE



PE-457
DRIED CARROT



PE-458
TOASTY WALNUT



PE-486
VANILLA CUSTARD



PE-489
MIAMI SUNSET



PE-492
WEATHERED BRICK



FINISHED SIZE | 60" x 70"

FABRIC REQUIREMENTS

Fabric A	KSM-83306	$\frac{7}{8}$ yd.
Fabric B	PE-486	$\frac{1}{2}$ yd.
Fabric C	PE-492	$\frac{1}{2}$ yd.
Fabric D	KSM-73300	$\frac{1}{2}$ yd.
Fabric E	PE-457	$\frac{3}{4}$ yd.
Fabric F	PE-422	$\frac{1}{4}$ yd.
Fabric G	KSM-73304	1 yd.
Fabric H	KSM-83305	$\frac{3}{4}$ yd.
Fabric I	KSM-73305	$\frac{5}{8}$ yd.
Fabric J	KSM-83307	$\frac{1}{4}$ yd.
Fabric K	KSM-73306	$\frac{3}{8}$ yd.
Fabric L	KSM-83301	$\frac{5}{8}$ yd.
Fabric M	KSM-73308	$\frac{1}{2}$ yd.
Fabric N	PE-489	$\frac{3}{8}$ yd.
Fabric O	PE-458	$\frac{1}{4}$ yd.
Fabric P	KSM-73302	$\frac{3}{8}$ yd.
Fabric Q	KSM-83309	$\frac{5}{8}$ yd.
Fabric R	KSM-83304	$\frac{5}{8}$ yd.
Fabric S	KSM-73301	$\frac{5}{8}$ yd.

BACKING FABRIC

KSM-73304 4½ yd (Suggested)

BINDING FABRIC

Fabric **C** PE-492 (Included)

CUTTING DIRECTIONS

¼" seam allowances are included.

- Three (3) Block A- Piece 1 from fabric **A**.
- Three (3) Block A- Piece 3 from fabric **A**.
- Two (2) Block B- Piece 1 from fabric **A**.
- Fourteen (14) Block B- Dresden Plate from fabric **A**.
- Three (3) Block C- Piece 1 from fabric **A**.
- Three (3) Outer Block from fabric **A**.
- Three (3) Block A- Piece 2 from fabric **B**.
- Three (3) Outer Block from fabric **B**.
- Three (3) Block A- Piece 4 from fabric **C**.
- Three (3) Block A- Piece 3 from fabric **D**.
- Three (3) Block B- Dresden Plate from fabric **D**.
- Three (3) Block A- Piece 2 from fabric **E**.
- Three (3) Block A- Piece 3 from fabric **E**.
- Five (5) Outer Block from fabric **E**.
- Two (2) Block A- Piece 3 from fabric **F**.
- Two (2) Block A- Piece 1 from fabric **G**.
- Two (2) Block A- Piece 4 from fabric **G**.
- Three (3) Outer Block from fabric **G**.
- Three (3) Block B- Piece 1 from fabric **G**.
- Two (2) Block B- Dresden Center from fabric **G**.
- Three (3) Block A- Piece 3 from fabric **H**.
- Three (3) Outer Block from fabric **H**.
- Ten (10) Block B- Dresden Plate from fabric **H**.
- Three (3) Block B- Dresden Center from fabric **H**.
- Three (3) Block C- Piece 1 from fabric **H**.
- Two (2) Block A- Piece 2 from fabric **I**.
- Three (3) Outer Block from fabric **I**.
- Three (3) Block C- Piece 1 from fabric **I**.

CONSTRUCTION

Sew all rights sides together with 1/4" seam allowance.

Block A:

- Gather all Block A pieces (and Outer Circle Pieces) and press each piece in half so that you can easily match centers when pinning.
- When sewing curved pieces together pin the concave piece onto of the convex piece (ie, Pin 2 to 1, with 1 on the bottom).
- First pin the edges and match the center marks, then pin the rest of the piece and sew at 1/4" seam allowance.
- Make block A in the following fabric combinations:

Pattern Pieces- Block A

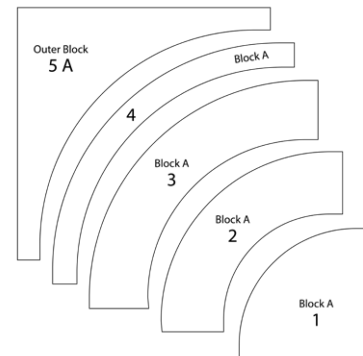
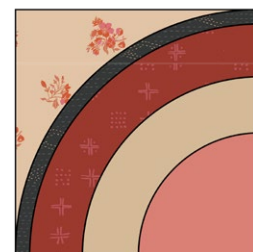


DIAGRAM 1

- **A1:**
- 1: Fabric **N** > 2: Fabric **B** > 3: Fabric **A** > 4: Fabric **L** > 5: Fabric **P**



A1 -Make 3

DIAGRAM 2

- Three (3) Block A- Piece 1 from fabric **J**.
- Three (3) Block A- Piece 4 from fabric **J**.
- Three (3) Block A- Piece 1 from fabric **K**.
- Three (3) Block C- Piece 3 from fabric **K**.
- Three (3) Block A- Piece 2 from fabric **L**.
- Three (3) Block A- Piece 4 from fabric **L**.
- Two (2) Outer Block from fabric **L**.
- Three (3) Block B- Dresden Plate from fabric **L**.
- Three (3) Block B- Dresden Center from fabric **L**.
- Three (3) Outer Block from fabric **M**.
- Three (3) Block A- Piece 1 from fabric **N**.
- Three (3) Block B- Dresden Plate from fabric **N**.
- Three (3) Block B- Dresden Center from fabric **N**.
- Three (3) Outer Block from fabric **N**.
- Three (3) Block A- Piece 4 from fabric **O**.
- Two (2) Block B- Piece 1 from fabric **P**.
- Three (3) Outer Block from fabric **P**.
- Six (6) Block B- Piece 1 from fabric **Q**.
- Three (3) Block C- Piece 1 from fabric **Q**.
- Six (6) Outer Block from fabric **R**.
- Ten (10) Block B- Dresden Plate from fabric **R**.
- Two (2) Block B- Dresden Center from fabric **R**.
- Three (3) Block A- Piece 2 from fabric **S**.
- Two (2) Outer Block from fabric **S**.
- Eight (8) Block B- Dresden Plate from fabric **S**.
- Set aside fabric remnants from Fabrics **B, C, D, G, H, I, L, M & R** for paper piecing the middle sections on blocks B.

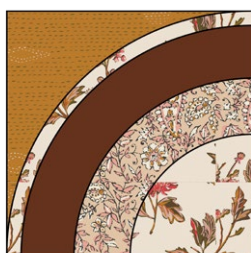
- **A2:**
- 1: Fabric **A** > 2: Fabric **S** > 3: Fabric **H** > 4: Fabric **C** > 5: Fabric **E**



A2 -Make 3

DIAGRAM 3

- **A3:**
- 1: Fabric **G** > 2: Fabric **I** > 3: Fabric **F** > 4: Fabric **G** > 5: Fabric **S**



A3 -Make 2

DIAGRAM 4

- **A4:**
- 1: Fabric **J** > 2: Fabric **L** > 3: Fabric **E** > 4: Fabric **J** > 5: Fabric **G**



A4 -Make 3

DIAGRAM 5

- **A5:**
- 1: Fabric **K** > 2: Fabric **E** > 3: Fabric **D** > 4: Fabric **O** > 5: Fabric **M**



A5 -Make 3

DIAGRAM 6

- Press carefully and trim all blocks to 10 ½" square. Blocks must be trimmed. Set aside.

Block B:

- Sew pattern pieces 1 to Outer Block Piece the same as for Block A and trim blocks to 10 ½" square.
- Sew the top of the Dresden Plate pieces into points by folding the top in half, right sides together and sewing across the top. Snip the corner with the fold of fabric and then flip right side out and press down to make the point. See Diagram below.

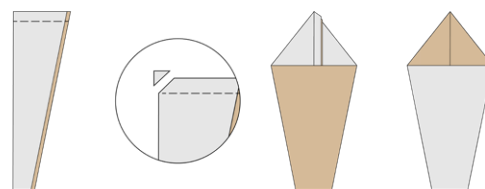


DIAGRAM 7

- Sew the 4 Dresden Plate petals to each other and applique to the corner of the block.
- Turn over the curved edge of the Dresden center circle applique piece by cutting out the pressing template from cardstock or freezer paper and pressing the curved edge over it. Then, applique to the corner of the block.

Pattern Pieces- Block B

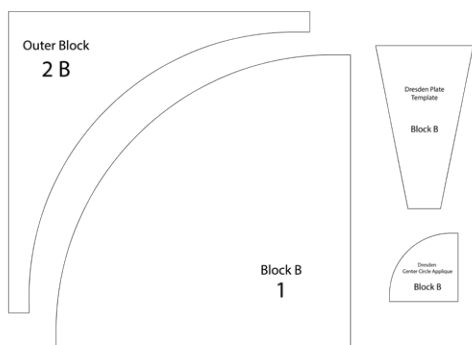


DIAGRAM 8

B1:

- 1: Fabric **P** > 2: Fabric **E**
- Dresden Plates: 2 Fabric **N**, 1 Fabric **A**, 1 Fabric **S**
- Center- Fabric **R**



B1 -Make 2

DIAGRAM 9

B2:

- 1: Fabric **Q** > 2: Fabric **H**
- Dresden Plates: 2 Fabric **A**, 2 Fabric **R**
- Center- Fabric **L**



B2 -Make 3

DIAGRAM 10

B3:

- 1: Fabric **A** > 2: Fabric **L**
- Dresden Plates: 2 Fabric **H**, 2 Fabric **R**
- Center- Fabric **G**



B3 -Make 2

DIAGRAM 11

B4:

- 1: Fabric **G** > 2: Fabric **I**
- Dresden Plates- 2 Fabric **S**, 1 Fabric **D**, 1 Fabric **L**.
- Center- Fabric **H**



B4 -Make 3

DIAGRAM 12

B5:

- 1: Fabric **Q** > 2: Fabric **R**
- Dresden Plates: 2 Fabric **A**, 2 Fabric **H**
- Center- Fabric **N**



B5 -Make 3

DIAGRAM 13

Block C Assembly Instructions:

- Use the paper piecing templates found at the end of these instructions to sew the middle sections of Block C first. Print and assemble 15 templates.
- If you are new to paper piecing check out this video tutorial on how to paper piece:
<https://www.youtube.com/watch?v=ti5Odogwb3Y>
- Odd numbers will be the background color and even numbers will be the rays in the middle paper pieced section.
- Pin and sew Pattern Piece 1 to middle section to Outer Block 3 as with Block A.
- Press carefully and trim blocks to 10½" square.

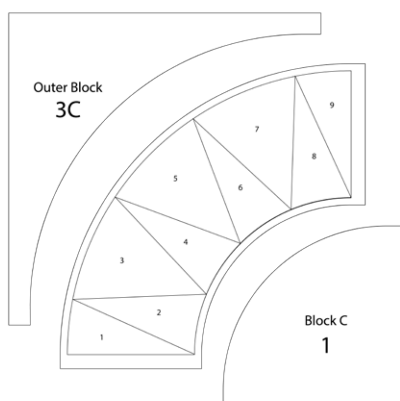


DIAGRAM 14

C1:

- 1: Fabric **H** > Paper-piecing: Odd #s- Fabric **M**, Even #s- Fabric **I** > 3: Fabric **A**



C1 -Make 3

DIAGRAM 15

C2:

- 1: Fabric **Q** > Paper-piecing: Odd #s- Fabric **C**, Even #s- Fabric **H** > 3: Fabric **R**



C2 -Make 3

DIAGRAM 16

C3:

- 1: Fabric **A** > Paper-piecing: Odd #s- Fabric **I**, Even #s- Fabric **R** > 3: Fabric **B**



C3 -Make 3

DIAGRAM 17

C4:

- 1: Fabric **I** > Paper-piecing: Odd #s- Fabric **L**, Even #s- Fabric **B** > 3: Fabric **N**

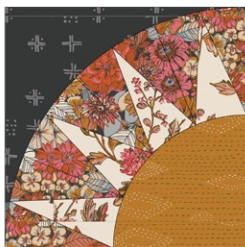


C4 -Make 3

DIAGRAM 18

C5:

- 1: Fabric **K** > Paper-piecing: Odd #s- Fabric **D**, Even #s- Fabric **G** > 3: Fabric **N**



C5 -Make 3

DIAGRAM 19

QUILT TOP ASSEMBLY

Sew all rights sides together with 1/4"seam allowance.

- Join the blocks into rows following diagram 20.
- Row 1: A5 - C1 - A2 - C4 - C5 - B1
- Row 2: C4 - C3 - A1 - B4 - C2 - A4
- Row 3: B4 - B3 - C5 - B2 - A5 - B5
- Row 4: B2 - C2 - A2 - A3 - C1 - C3
- Row 5: A5 - A1 - B5 - A4 - B3 - A4
- Row 6: C2 - B4 - A3 - C3 - C4 - B1
- Row 7: A1 - B2 - C1 - B5 - A2 - C5

Row 1



Row 2



Row 3



Row 4



Row 5



Row 6



Row 7



DIAGRAM 20

QUILT ASSEMBLY

Sew rights sides together.

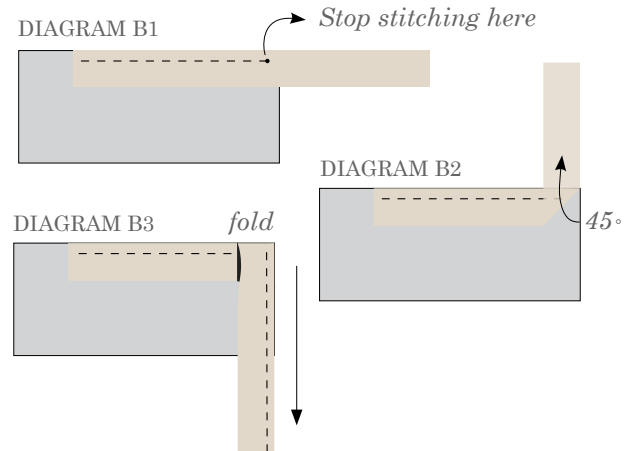
- Place BACKING FABRIC on a large surface wrong side up. Stretch it with masking tape against that surface.
- Place BATTING on top of backing fabric.
- Place TOP on top of the batting with right side facing up. Smooth away wrinkles using your hands.
- Pin all layers together and baste with basting thread, using long stitches. You can also use safety pins to join the layers.
- Machine or hand quilt starting at the center and working towards the corners. Remember that quilting motifs are a matter of personal preference. Have fun choosing yours!
- After you finished, trim excess of any fabric or batting, squaring the quilt to proceed to bind it.

BINDING

Sew rights sides together.

- Cut enough strips $1\frac{1}{2}$ " wide by the width of the fabric **C** to make a final strip 270" long. Start sewing the binding strip in the middle of one of the sides of the quilt, placing the strip right side down and leaving an approximated 5" tail. Sew with $\frac{1}{4}$ " seam allowance (using straight stitch), aligning the strip's raw edge with the quilt top's raw edge.
- Stop stitching $\frac{1}{4}$ " before the edge of the quilt (DIAGRAM B 1). Clip the threads. Remove the quilt from under the machine presser foot. Fold the strip in a motion of 45° and upward, pressing with your fingers (DIAGRAM B2). Hold this fold with your finger, bring the strip down in line with the next edge, making a horizontal fold that aligns with the top edge of the quilt (DIAGRAM B3). Start sewing at $\frac{1}{4}$ " of the border, stitching all the layers. Do the same in the four corners of the quilt.

- Stop stitching before you reach the last 5 or 6 inches. Cut the threads and remove the quilt from under the machine presser foot. Lay the loose ends of the binding flat along the quilt edge, folding the ends back on themselves where they meet. Press them together to form a crease. Using this crease as the stitching line, sew the two open ends of the binding with right sides together (you can help yourself marking with a pencil if the crease is difficult to see).
- Trim seam to $\frac{1}{4}$ " and press open. Complete the sewing. Turn binding to back of the quilt, turn raw edge inside and stitch by hand using blind stitch.



artgalleryfabrics.com

NOTE: While all possible care has been taken to ensure the accuracy of this pattern, We are not responsible for printing errors or the way in which individual work varies.

Please read instructions carefully before starting the construction of this quilt. If desired, wash and iron your fabrics before starting to cut.

TEMPLATES

Diagram 21 is a representation of the templates
is a smaller scale to use as a guide.

The real size templates start in the next page

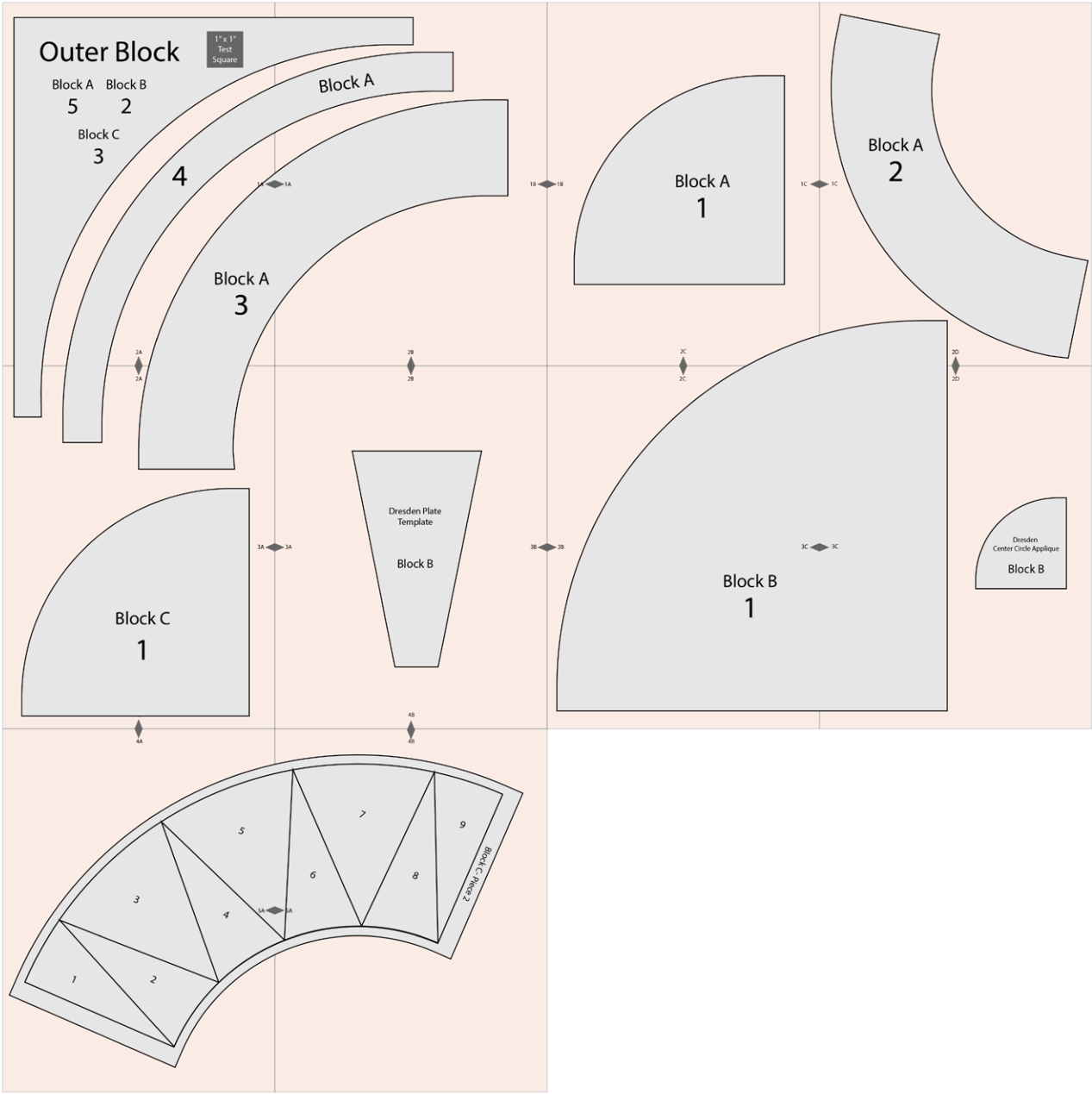


DIAGRAM 21

Outer Block

1" x 1"
Test
Square

Block A Block B

5 2

Block C

3

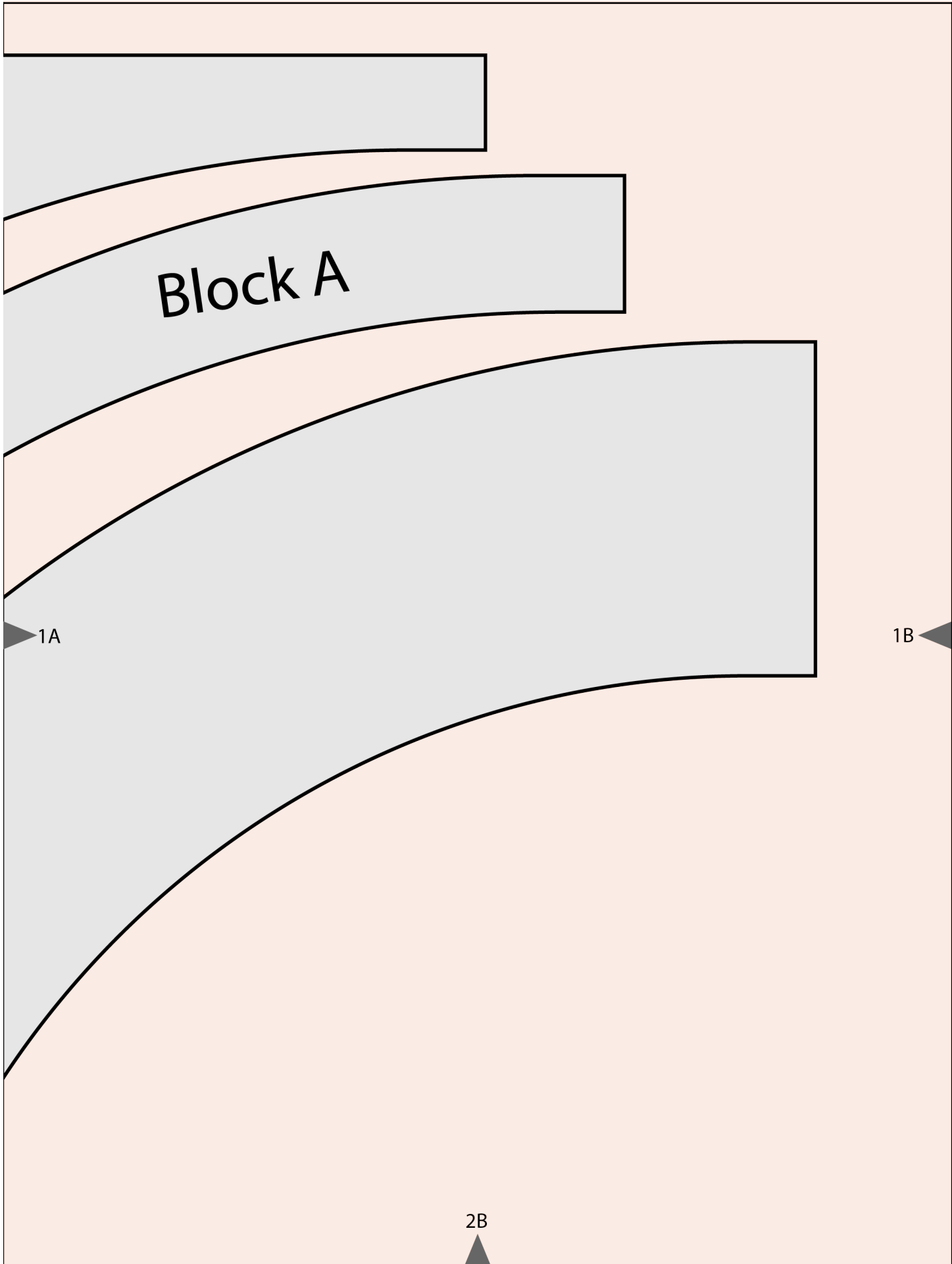
4

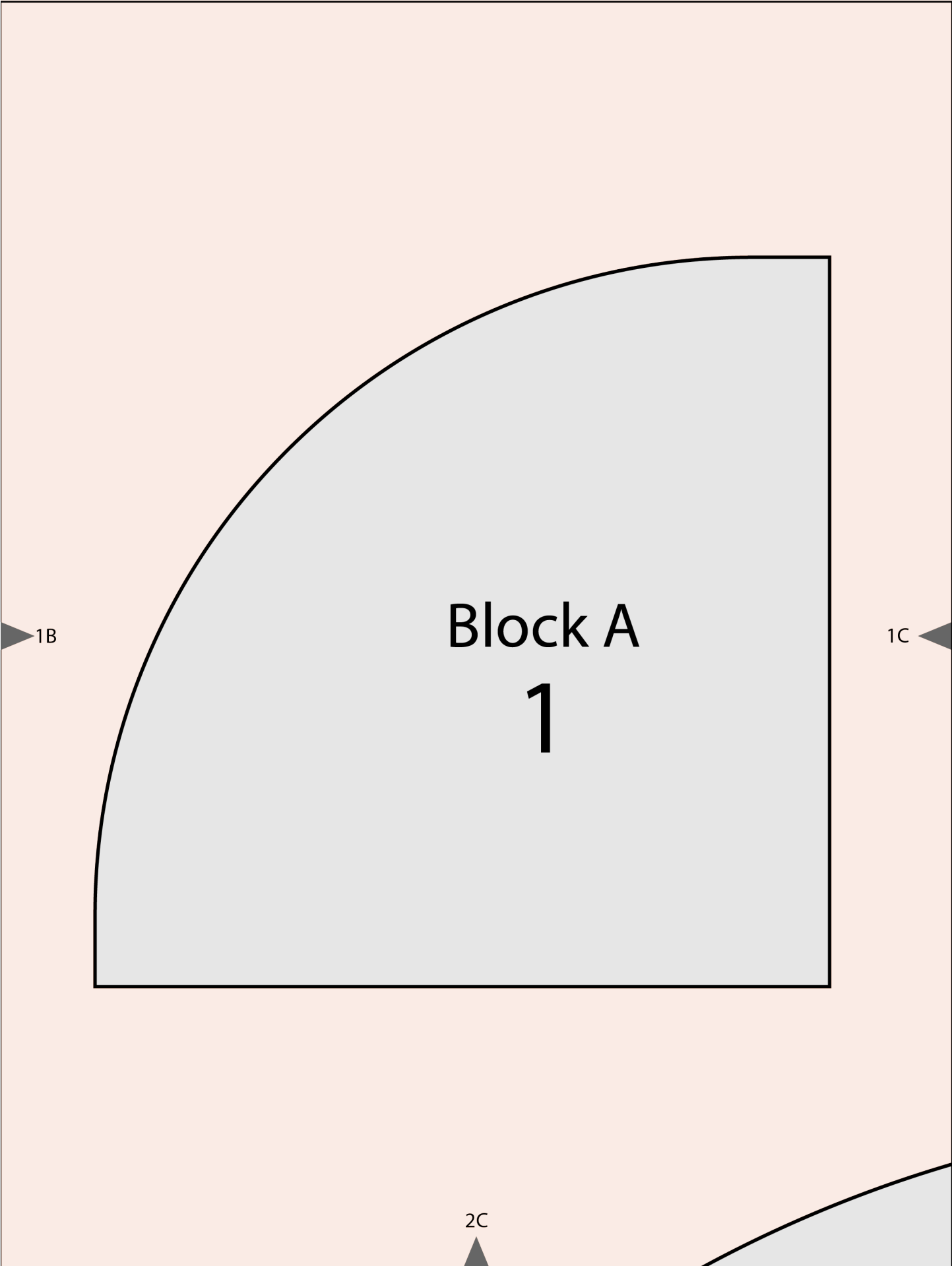
Block A

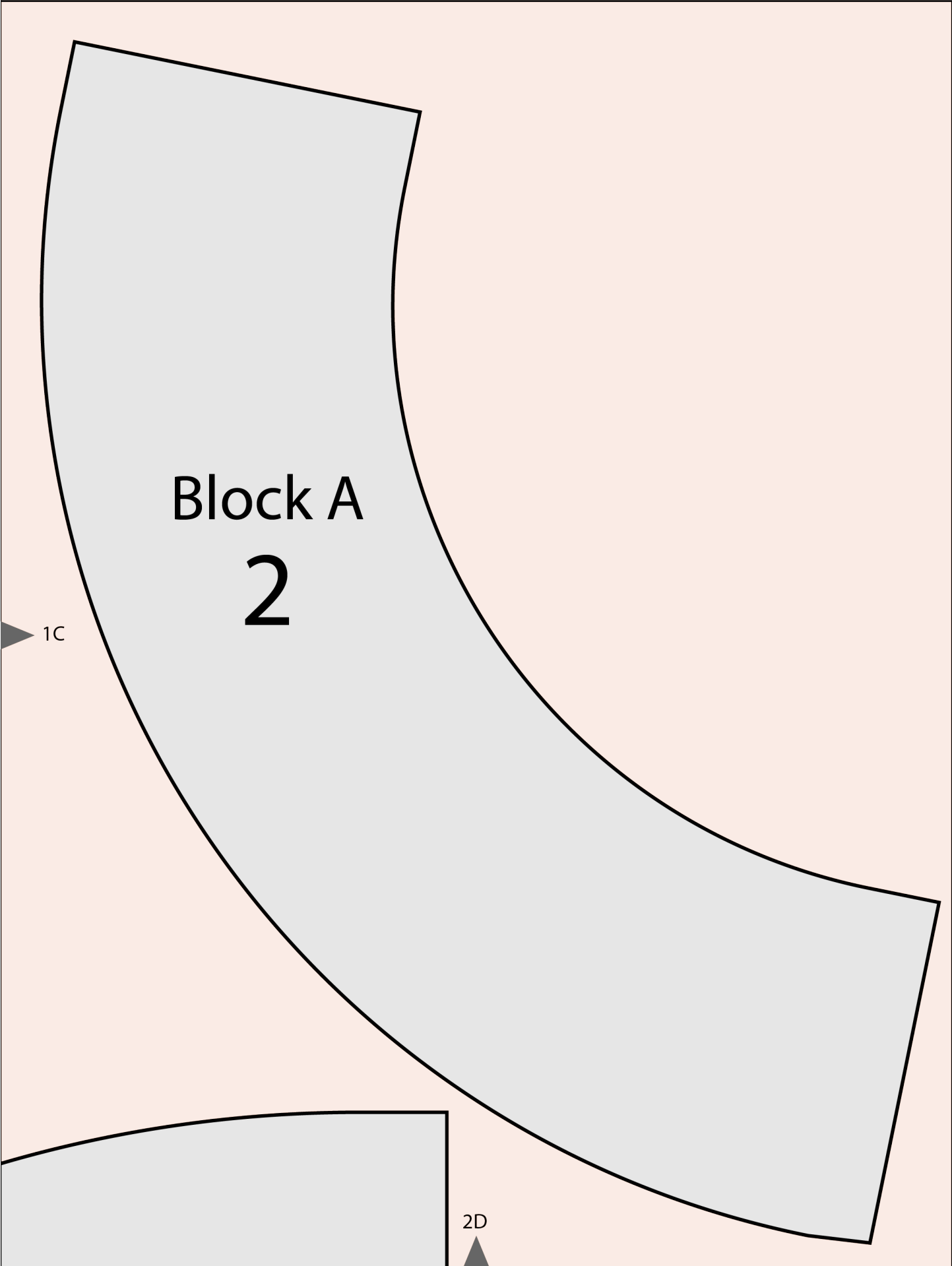
3

1A

2A



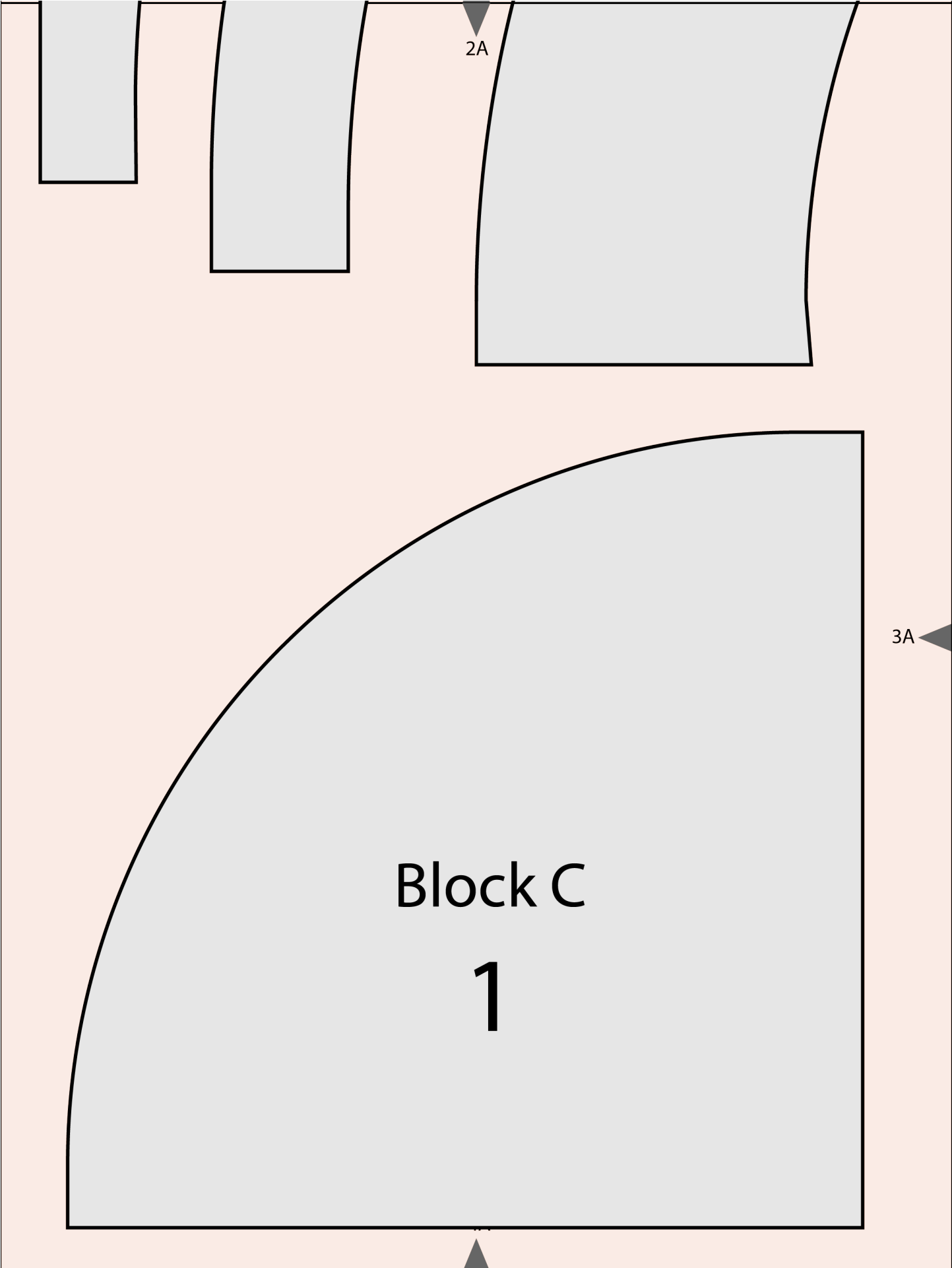




Block A
2

1C

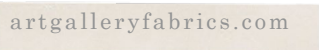
2D



2A

3A

Block C
1



x x x x x x x x x x x x x x x x x x x


 $2C$

3B

3C


Block B

1



Dresden
Center Circle Applique

Block B



Dresden
Center Circle Applique

Block B



