

## A quilt square design featuring a central square with a yellow and black pattern, surrounded by four triangles with red and white floral patterns, and four triangles with black and white patterns.



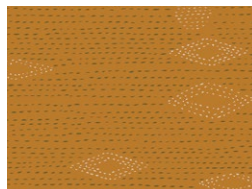


# Dashing Flowers

DESIGNED BY AGFstudio

*Kismet*

FABRICS DESIGNED BY SHARON HOLLAND



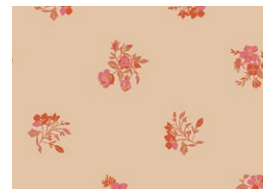
KSM-73301  
KANTHA MICA



KSM-8330  
KANTHA CHARCOAL



KSM-83300  
FLEURON SANCTUARY



KSM-73302  
BURGEON FORTH



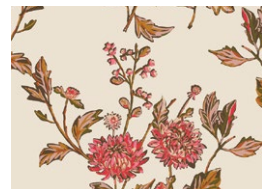
KSM-73308  
DASHING CINNAMON



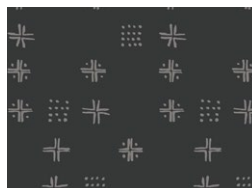
KSM-83306  
MUDCLOTH BERRIES



KSM-83309  
BUSY BEE KARMA



KSM-73304  
CUT FLOWERS FORTUNE



KSM-73306  
MUDCLOTH SABLE



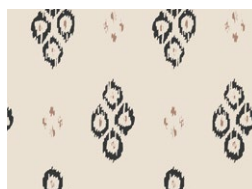
KSM-73300  
FLEURON HAVEN



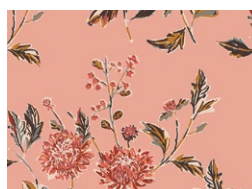
KSM-83303  
CLOAK AND PETAL



KSM-73307  
IKAT DIAMOND RUSTIC



KSM-83307  
IKAT DIAMOND POSH



KSM-83304  
CUT FLOWERS FAVOR



KSM-73305  
INDIA INK PARCHMENT



FEEL THE DIFFERENCE © 2020 Courtesy of Art Gallery Quilts LLC. All Rights Reserved.

ADDITIONAL BLENDERS FOR THIS PROJECT



**DSE-704**  
SHADOW



**DSE-715**  
CAFE LATTE



**DSE-714**  
PECAN PRALINE



**DSE-713**  
RED DESERT

# Dashing Flowers

FINISHED SIZE | 12" x 12"

## FABRIC REQUIREMENTS

### Block 1

Fabric <b>A</b>	KSM-73301	Fat 8.
Fabric <b>B</b>	KSM-83301	Fat 8.
Fabric <b>C</b>	KSM-83300	Fat 8.
Fabric <b>D</b>	KSM-73302	Fat 8.
Fabric <b>E</b>	DSE-704	Fat 8.

### Block 2

Fabric <b>A</b>	KSM-73308	Fat 8.
Fabric <b>B</b>	KSM-83306	Fat 8.
Fabric <b>C</b>	KSM-83309	Fat 8.
Fabric <b>D</b>	KSM-73304	Fat 8.
Fabric <b>E</b>	DSE-715	Fat 8.

### Block 3

Fabric <b>A</b>	KSM-73306	Fat 8.
Fabric <b>B</b>	KSM-73300	Fat 8.
Fabric <b>C</b>	KSM-73301	Fat 8.
Fabric <b>D</b>	KSM-73305	Fat 8.
Fabric <b>E</b>	DSE-713	Fat 8.

### Block 4

Fabric <b>A</b>	KSM-83307	Fat 8.
Fabric <b>B</b>	KSM-83304	Fat 8.
Fabric <b>C</b>	KSM-73301	Fat 8.
Fabric <b>D</b>	KSM-73305	Fat 8.
Fabric <b>E</b>	DSE-713	Fat 8.

## CUTTING DIRECTIONS

*¼" seam allowances are included.  
WOF means width of fabric.*

- One (1) 4½" square from fabric **A**.
- One (1) 4⅞" square from fabric **B**.
- Six (6) 2½" squares from fabric **B**.
- One (1) 4⅞" square from fabric **C**.
- Six (6) 2½" squares from fabric **C**.
- Eight (8) 4½" x 2½" rectangles from fabric **D**.
- Two (2) 4⅞" squares from fabric **E**.
- Eight (8) 2½" squares from fabric **E**.

## CONSTRUCTION

*Sew all rights sides together with ¼" seam allowance.*

### Half Square Triangle Construction:

- Take two 4⅞" squares from fabrics **B** and **E**.
- Draw a line diagonally corner to corner using a mechanical pencil or frixion pen.
- Stitch ¼" on each side from the drawn lines.
- Cut the pieces apart along the marked diagonal line.
- Press and trim to a 4½" perfect square.

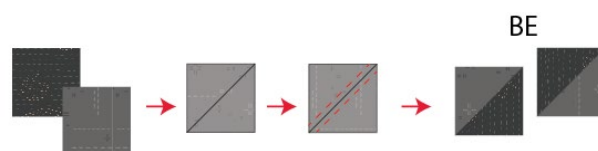


DIAGRAM 1

- Repeat the same HST construction by taking one 4⅞" square from fabrics **B** and **C**, creating a total of two **BC**.

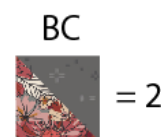


DIAGRAM 2

## Flying Geese Construction:

- Bring four  $4\frac{1}{2}$ " x  $2\frac{1}{2}$ " rectangles from fabric **D** and four  $2\frac{1}{2}$ " squares from fabrics **C** and **E**.
- For the first flying geese combination, **EDC**, take one  $2\frac{1}{2}$ " square from fabrics **C** and **E** and one  $4\frac{1}{2}$ " x  $2\frac{1}{2}$ " rectangle from fabric **D**.
- Place one fabric **E** square on top of the fabric **D** rectangle.
- Align it to the left side of the rectangle, right sides facing together and draw a diagonal line on top of the square following the diagram below.

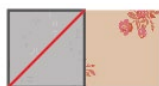


DIAGRAM 3

- Stitch on the drawn line.
- Trim excess fabric leaving  $\frac{1}{4}$ " seam allowance and press open.



DIAGRAM 4

- Take one  $2\frac{1}{2}$ " square from fabric **C** and align it on the right side of the fabric **D** rectangle, right sides facing together.
- Draw a diagonal line on top of the square.
- Stitch on the drawn line.
- Trim excess fabric leaving  $\frac{1}{4}$ " seam allowance and press open.
- Repeat these steps to have a total of two **EDC** flying geesees.



DIAGRAM 5

- Following the same flying geese construction, take the remaining two  $4\frac{1}{2}$ " x  $2\frac{1}{2}$ " rectangles from fabric **D** and the  $2\frac{1}{2}$ " squares from fabric **C** and **E** and assemble two **CDE** flying geesees.

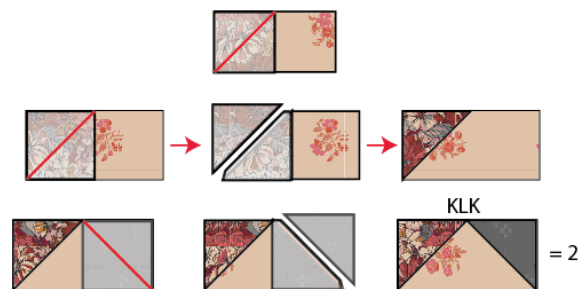


DIAGRAM 6

- Now, take four  $4\frac{1}{2}$ " x  $2\frac{1}{2}$ " rectangles from fabric **D**, four  $2\frac{1}{2}$ " squares from fabric **B** and **E**.
- Create two **BDE** flying geese combination and two **EDB** flying geese combination.

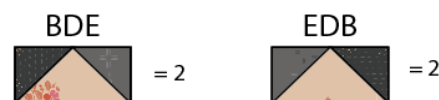


DIAGRAM 7

- To create your center block, take one  $4\frac{1}{2}$ " square from fabric **A**, two  $2\frac{1}{2}$ " squares from fabrics **B** and **C**.
- Align one  $2\frac{1}{2}$ " square to the top left corner of the  $4\frac{1}{2}$ " square, face to face.
- Draw a diagonal line on the wrong side of the fabric of the  $2\frac{1}{2}$ " square and sew on the line.
- Trim excess fabric leaving  $\frac{1}{4}$ " of seam allowance.
- Press open.
- Repeat these steps for the remaining 3 corners, following the diagram below.



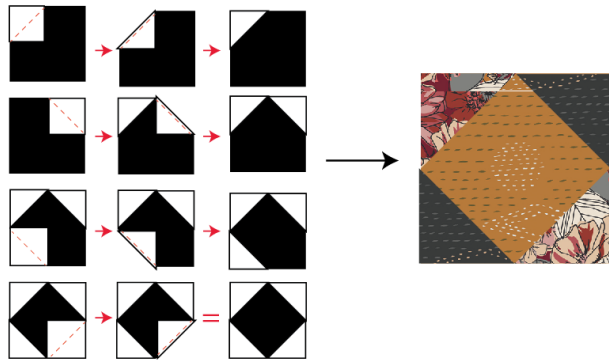


DIAGRAM 8

## ASSEMBLING THE ROWS

- To assemble Row 1, take one **BE** hst, one **EDC**, one **BDE** and one **BC** hst and join them following the diagram below.

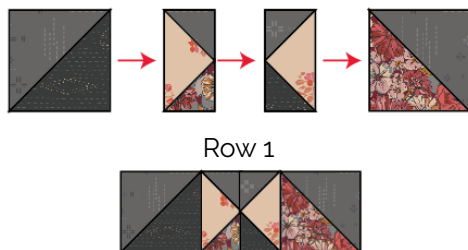


DIAGRAM 9

- To assemble Row 2, join one **CDE** flying geese and one **EDB** flying geese.

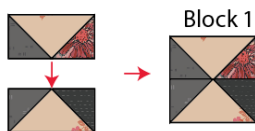


DIAGRAM 10

- Now, join one **EDB** with one **CDE** following the diagram below.

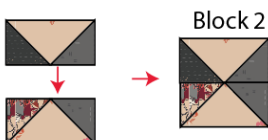


DIAGRAM 11

- Take the center block and both blocks 1 and 2.
- Join block 1 on the left side of the center block and then block 2 on the right side of the center block.

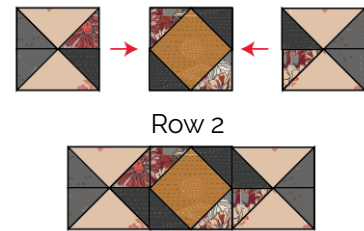


DIAGRAM 12

- To assemble Row 3, take one **CE** hst, one **BDE** flying geese, one **EDC** flying geese and one **BE** hst and join the pieces following the diagram below.



DIAGRAM 13

- Finish your block by joining rows 1-3.
- Enjoy!



DIAGRAM 14

XXXXXXXXXXXXXXXXXXXXXXXXXXXXXXXXXXXX

*Congratulations  
& enjoy*

XXXXXXXXXXXXXXXXXXXXXXXXXXXXXXXXXXXX



[artgalleryfabrics.com](http://artgalleryfabrics.com)

NOTE: While all possible care has been taken to ensure the accuracy of this pattern, We are not responsible for printing errors or the way in which individual work varies.

Please read instructions carefully before starting the construction of this quilt. If desired, wash and iron your fabrics before starting to cut.

© 2020 Courtesy of Art Gallery Quilts LLC. All Rights Reserved.