

by AGF

x x x x x x x x x x x x x x x x x x



DESIGNED BY *AGFstudio*



serenity FUSION



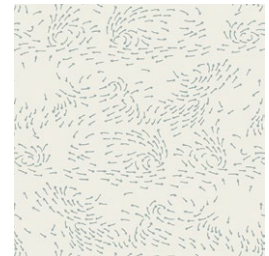
FUS-SE-2100
AVES CHATTER SERENITY
by Bonnie Christine



FUS-SE-2101
TRAVELER SERENITY
by Sharon Holland



FUS-SE-2102
+ YOUR HEART SERENITY
by Katarina Roccella



FUS-SE-2104
TRADE WINDS SERENITY
by Sharon Holland



FUS-SE-2105
TRIANGULAR SERENITY
by Maureen Cracknell



FUS-SE-2106
SEEDS OF SERENITY
by Katarina Roccella



FUS-SE-2107
SAUVAGE SKY SERENITY
by Pat Bravo



FUS-SE-2108
DELICATE BALANCE SERENITY
by Sharon Holland



FUS-SE-2110
NESTED SERENITY
by Bonnie Christine



FUS-SE-2111
AURA FLETCHINGS SERENITY
by Maureen Cracknell



PE-419
LIGHT GREY



FINISHED SIZE | 10" x 10"

FABRIC REQUIREMENTS

Block 1

| | | |
|-----------------|-------------|--------|
| Fabric A | FUS-SE-2110 | Fat 8. |
| Fabric B | FUS-SE-2108 | Fat 8. |
| Fabric C | FUS-SE-2105 | Fat 8. |
| Fabric D | FUS-SE-2104 | Fat 8. |

Block 2

| | | |
|-----------------|-------------|--------|
| Fabric A | FUS-SE-2104 | Fat 8. |
| Fabric B | FUS-SE-2102 | Fat 8. |
| Fabric C | FUS-SE-2100 | Fat 8. |
| Fabric D | FUS-SE-2106 | Fat 8. |

Block 3

| | | |
|-----------------|-------------|--------|
| Fabric A | FUS-SE-2101 | Fat 8. |
| Fabric B | FUS-SE-2107 | Fat 8. |
| Fabric C | PE-419 | Fat 8. |
| Fabric D | FUS-SE-2110 | Fat 8. |

Block 4

| | | |
|-----------------|-------------|--------|
| Fabric A | FUS-SE-2106 | Fat 8. |
| Fabric B | FUS-SE-2105 | Fat 8. |
| Fabric C | FUS-SE-2111 | Fat 8. |
| Fabric D | FUS-SE-2104 | Fat 8. |

CUTTING DIRECTIONS

*¼" seam allowances are included.
WOF means width of fabric.*

- Two (2) 5½" x 2" rectangles from fabrics **A** & **B**.
- Two (2) 4" x 2" rectangles from fabrics **A** & **B**.
- Two (2) 2½" squares from fabrics **A** & **B**.
- Two (2) 4" x 1½" rectangles from fabrics **C** & **D**.
- Two (2) 3" x 1½" rectangles from fabrics **C** & **D**.
- Two (2) 3" x 1" rectangles from fabrics **C** & **D**.
- Two (2) 2½" x 1" rectangles from fabrics **C** & **D**.

CONSTRUCTION

Sew all rights sides together with ¼" seam allowance.

- This blocks is made out of two different log cabin combinations, make a total of two from each combination.

LOG CABIN #1

- Take one 2½" square from fabric **A** and one 2½" x 1" rectangle from fabric **D**.
- Attach the rectangle on top of the square.
- Press open.



DIAGRAM 1

- Bring one 3" x 1" rectangle from fabric **D** and attach it to the right side of the previous sewn piece.
- Press open.

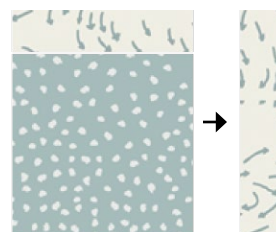


DIAGRAM 2

- Bring one 3" x 1½" rectangle from fabric **C** and attach it on top of the previous sewn piece.
- Press open.

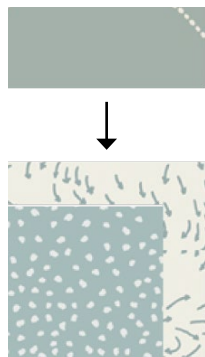


DIAGRAM 3

- Bring one 4" x 1½" rectangle from fabric **C** and attach to the right side of the previous sewn piece.
- Press open.

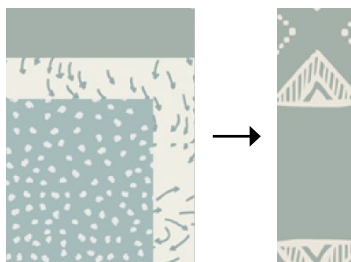


DIAGRAM 4

- Bring one 4" x 2" rectangle from fabric **B** and attach it on top of the previous sewn piece.
- Press open.

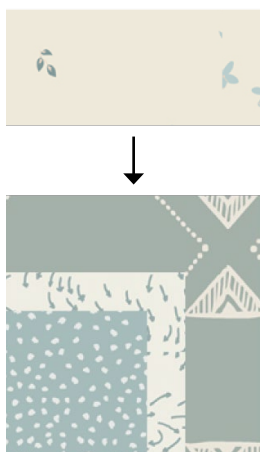
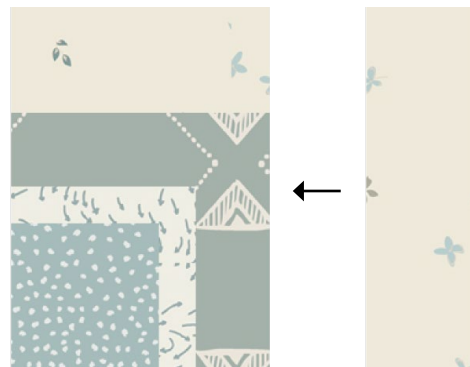


DIAGRAM 5

- Bring one 5½" x 2" rectangle from fabric **C** and attach it to the right side of the previous sewn piece.
- Press and set a side.
- Make a total of two LOG CABIN #1.



X2

DIAGRAM 6

LOG CABIN #2

- Take one 2½" square from fabric **B** and one 2½" x 1" rectangle from fabric **C**.
- Attach the rectangle on top of the square.
- Press open.

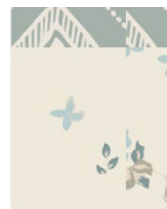


DIAGRAM 7

-

DIAGRAM 8

-

DIAGRAM 9

-

DIAGRAM 10

- Bring one 4" x 2" rectangle from fabric **A** and attach it on top of the previous sewn piece.
- Press open.

XXXXXXXXXXXXXXXXXXXXXXXXXXXXXXXXXXXXXXXXXXXXXXXXXXXXXXXXXXXX

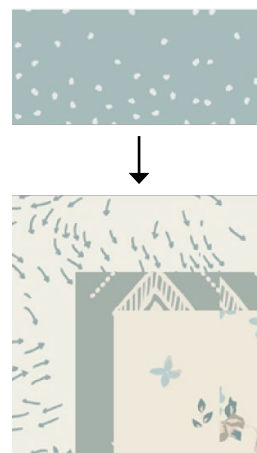


DIAGRAM 11

-

X2



DIAGRAM 12

- Bring the four log cabin quares previously made and attach one LOG CABIN #2 and one LOG CABIN #1 together as shown in the diagram below to create one row.
- Make two rows.

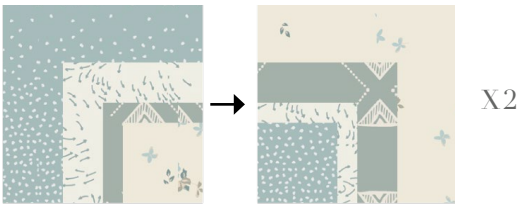


DIAGRAM 13

- Rotate one row and attach the rows together.

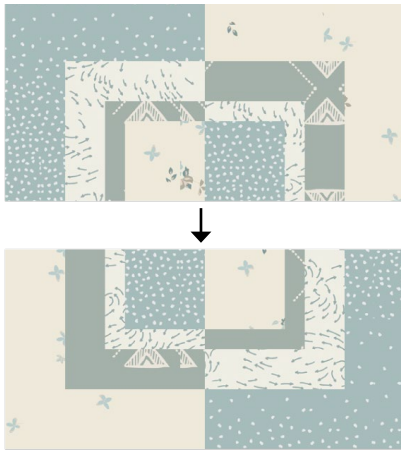


DIAGRAM 14

- Voila!



DIAGRAM 15

XXXXXXXXXXXXXXXXXXXXXXXXXXXX

*Congratulations
& enjoy*

XXXXXXXXXXXXXXXXXXXXXXXXXXXX



artgalleryfabrics.com

NOTE: While all possible care has been taken to ensure the accuracy of this pattern, We are not responsible for printing errors or the way in which individual work varies.

Please read instructions carefully before starting the construction of this quilt. If desired, wash and iron your fabrics before starting to cut.

© 2020 Courtesy of Art Gallery Quilts LLC. All Rights Reserved.