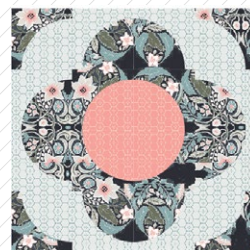


Hidden Treasures



Hidden Treasures

DESIGNED BY AGFstudio



Picturesque

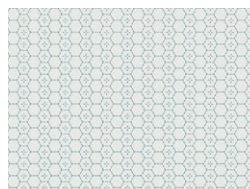
FABRICS DESIGNED BY KATARINA ROCCELLA



PIC-29455
ORNATILE DEEP



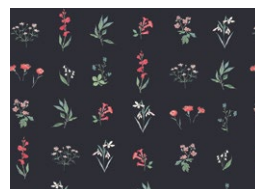
PIC-39456
BOUND TREASURES BLUSH



PIC-29456
BOUND TREASURES SKY



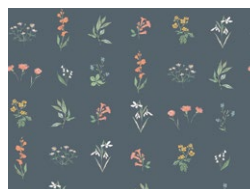
PIC-39458
MYSTICAL QUEST BY DAY



PIC-29457
BOTANICAL STUDY DARK



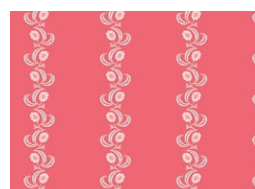
PIC-39453
LUSH MIMOSA



PIC-39457
BOTANICAL STUDY SOFT



PIC-29450
ROSEMANIC TRELLIS
BRIGHT



PIC-29451
ARTS & CRAFTS ROSE



PIC-29452
CHARMING MEDLAR



ADDITIONAL BLENDERS FOR THIS PROJECT



FE-533
WINTER WHEAT



FE-517
SUNSET

Hidden Treasures

FINISHED SIZE | 12" x 12"

FABRIC REQUIREMENTS

Block 1

Fabric **A** PIC-29455 FQ.

Fabric **B** PIC-39456 Fat 8.

Fabric **C** PIC-29456 FQ.

Block 2

Fabric **A** PIC-39458 FQ.

Fabric **B** PIC-29457 Fat 8.

Fabric **C** FE-533 $\frac{7}{8}$ yd.

Block 3

Fabric **A** PIC-39453 FQ.

Fabric **B** PIC-39457 Fat 8.

Fabric **C** FE-517 FQ.

Block 4

Fabric **A** PIC-29450 FQ.

Fabric **B** PIC-29451 Fat 8.

Fabric **C** PIC-29452 FQ.

CUTTING DIRECTIONS

$\frac{1}{4}$ " seam allowances are included.
WOF means width of fabric.

- Eight (8) template 1 from fabric **A**.
- Eight (8) template 2 from fabric **A**.
- Four (4) template 2 from fabric **B**.
- Eight (8) template 1 from fabric **C**.
- Four (4) template 2 from fabric **C**.

CONSTRUCTION

Sew all rights sides together with $\frac{1}{4}$ " seam allowance.

- Join template 1 from fabric **A** with template 2 from fabric **C**.
- Make four **A-C** blocks, following the diagram below.



DIAGRAM 1

- Join template 1 from fabric **C** with template 2 from fabric **A**.
- Make four **C-A** blocks, following the diagram below.

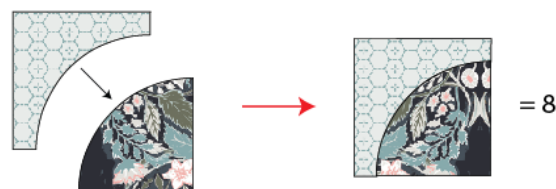


DIAGRAM 2

XXXXXXXXXXXXXXXXXXXXXXXXXXXXXXXXXXXX

*Congratulations
& enjoy*

XXXXXXXXXXXXXXXXXXXXXXXXXXXXXXXXXXXX



artgalleryfabrics.com

NOTE: While all possible care has been taken to ensure the accuracy of this pattern, We are not responsible for printing errors or the way in which individual work varies.

Please read instructions carefully before starting the construction of this quilt. If desired, wash and iron your fabrics before starting to cut.

© 2020 Courtesy of Art Gallery Quilts LLC. All Rights Reserved.

TEMPLATES

Printer Test



1" Square

