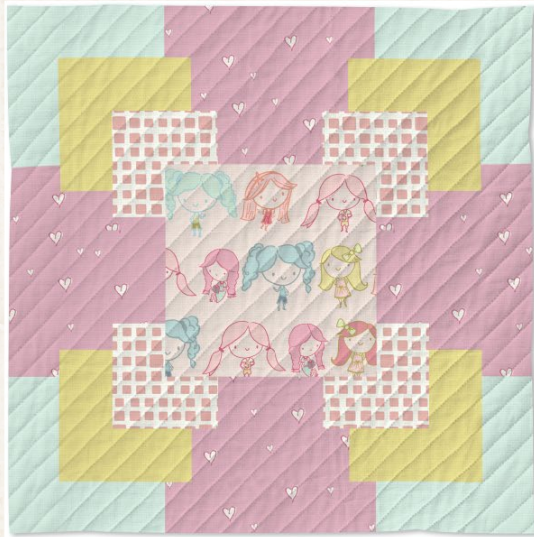


IRIS DREAM



# ANGLES

A DIVISION OF AGF

## FREE PATTERN

x x x x x x x x x x x x x x x x x x



# IRIS DREAM



DESIGNED BY AGFstudio

## day DREAM

FABRICS DESIGNED BY PATTY BASEMI



**DDR-25440**  
MAGICAL MEMORIES



**DDR-25444**  
GENTLE PETALS



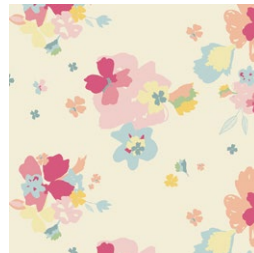
**DDR-25449**  
BEST FRIENDS FOREVER



**DDR-25446**  
PLAYING DRESS UP



**DDR-25441**  
GIRL AT HEART



**DDR-25442**  
SWEET DREAMLAND



**DDR-25451**  
WISH JARS

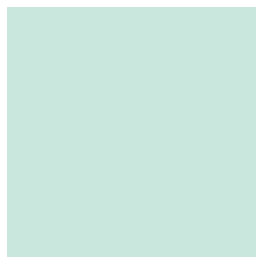


**DDR-25450**  
FLUTTERBY FLOWERS





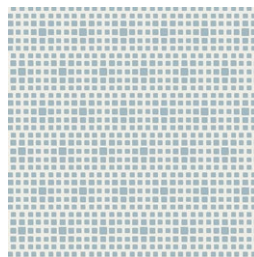
## ADDITIONAL BLENDERS FOR THIS PROJECT



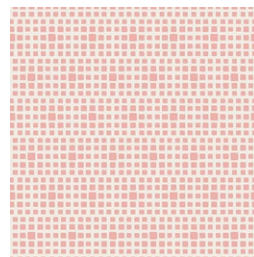
PE-451  
ICY MINT



PE-444  
PEACH SHERBET



SE-624  
RAINFALL



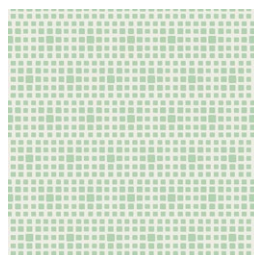
SE-601  
ROSEWATER



PE-446  
HONEYDEW



PE-420  
CRYSTAL PINK



SE-604  
SEAFOAM





FINISHED SIZE | 10" x 10"

## FABRIC REQUIREMENTS

### Block 1

Fabric <b>A</b>	DDR-25440	Fat 8
Fabric <b>B</b>	PE-451	Fat 8
Fabric <b>C</b>	DDR-25444	Fat 8
Fabric <b>D</b>	PE-444	Fat 8
Fabric <b>E</b>	SE-624	Fat 8

### Block 2

Fabric <b>A</b>	DDR-25449	Fat 8
Fabric <b>B</b>	SE-601	Fat 8
Fabric <b>C</b>	DDR-25441	Fat 8
Fabric <b>D</b>	PE-446	Fat 8
Fabric <b>E</b>	PE-451	Fat 8

### Block 3

Fabric <b>A</b>	DDR-25446	Fat 8
Fabric <b>B</b>	SE-601	Fat 8
Fabric <b>C</b>	DDR-25442	Fat 8
Fabric <b>D</b>	PE-446	Fat 8
Fabric <b>E</b>	PE-420	Fat 8

### Block 4

Fabric <b>A</b>	DDR-25451	Fat 8
Fabric <b>B</b>	PE-443	Fat 8
Fabric <b>C</b>	DDR-25450	Fat 8
Fabric <b>D</b>	PE-444	Fat 8
Fabric <b>E</b>	SE-604	Fat 8

## CUTTING DIRECTIONS

$\frac{1}{4}$ " seam allowances are included.  
WOF means width of fabric.

- One (1)  $4\frac{1}{2}$ " square from fabric **A**.
- Four (4)  $1\frac{1}{2}$ " squares from fabric **B**.
- Four (4)  $2\frac{1}{2}$ " x  $1\frac{1}{2}$ " rectangles from fabric **B**.
- Four (4)  $2\frac{1}{2}$ " x  $1\frac{1}{2}$ " rectangles from fabric **C**.
- Four (4)  $3\frac{1}{2}$ " x  $1\frac{1}{2}$ " rectangles from fabric **C**.
- Four (4)  $4\frac{1}{2}$ " x  $1\frac{1}{2}$ " rectangles from fabric **C**.
- Four (4) 2" x  $1\frac{1}{2}$ " rectangles from fabric **D**.
- Four (4) 3" x  $1\frac{1}{2}$ " rectangles from fabric **D**.
- Four (4)  $2\frac{1}{2}$ " x  $1\frac{1}{2}$ " rectangles from fabric **E**.
- Four (4)  $3\frac{1}{2}$ " x  $1\frac{1}{2}$ " rectangles from fabric **E**.

## CONSTRUCTION

Sew all rights sides together with  $\frac{1}{4}$ " seam allowance.

- Take two  $1\frac{1}{2}$ " squares from fabric **B** and join one on each side of one  $2\frac{1}{2}$ " x  $1\frac{1}{2}$ " rectangle from fabric **C**.
- Create another strip by taking two more  $1\frac{1}{2}$ " square from fabric **B** and one  $2\frac{1}{2}$ " x  $1\frac{1}{2}$ " rectangle from fabric **C**.

Strip Set 1



DIAGRAM 1

- Take two  $2\frac{1}{2}$ " x  $1\frac{1}{2}$ " rectangles from fabric **B** and join one on each side of one  $2\frac{1}{2}$ " x  $1\frac{1}{2}$ " rectangle from fabric **C**.
- Create another strip by taking two  $2\frac{1}{2}$ " x  $1\frac{1}{2}$ " rectangles from fabric **B** and one  $2\frac{1}{2}$ " x  $1\frac{1}{2}$ " rectangle from fabric **C**.

Strip Set 2



DIAGRAM 2



- Now, take two 2" x 1½" rectangles from fabric **D** and join one on each side of one 3½" x 1½" rectangle from fabric **C**.
- Create another strip by taking two 2" x 1½" rectangles from fabric **D** and one 3½" x 1½" rectangle from fabric **C**.



DIAGRAM 3

- Take two 3" x 1½" rectangles from fabric **D** and join one on each side of one 3½" x 1½" rectangle from fabric **C**.
- Create another strip by taking two 2" x 1½" rectangles from fabric **D** and one 3½" x 1½" rectangle from fabric **C**.



DIAGRAM 4

- Take two 2½" x 1½" rectangles from fabric **E** and join one on each side of one 4½" x 1½" rectangle from fabric **C**.
- Create another strip by taking two 2½" x 1½" rectangles from fabric **E** and one 4½" x 1½" rectangle from fabric **C**.



DIAGRAM 5

- Now, take two 3½" x 1½" rectangles from fabric **E** and join one on each side of one 4½" x 1½" rectangle from fabric **C**.
- Create another strip by taking two 3½" x 1½" rectangles from fabric **E** and one 4½" x 1½" rectangle from fabric **C**.

XXXXXXXXXXXXXXXXXXXXXXXXXXXXXXXXXXXX



DIAGRAM 6

## BLOCK ASSEMBLY

*(SS means Strip Set)*

- Take two SS1 and join each strip on each side of fabric **A** 4½" square.

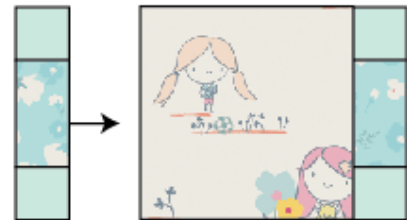


DIAGRAM 7

- Now take two SS2 and join one on the top and one on the bottom.

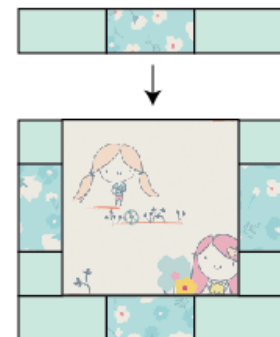


DIAGRAM 8



- Join two SS3 on each side of the unit, following the diagram below.

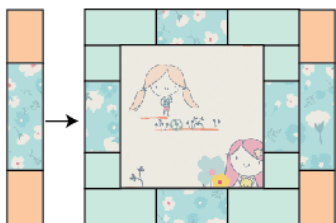


DIAGRAM 9

- Join two SS4, one on the top and one on the bottom of the unit, following the diagram below.

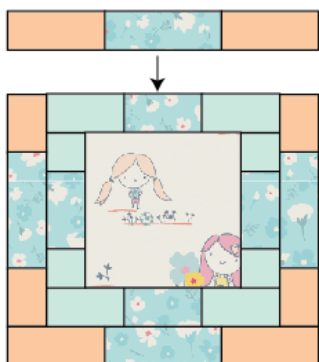


DIAGRAM 10

- Join two SS5, one on each side of the unit, following the diagram below.

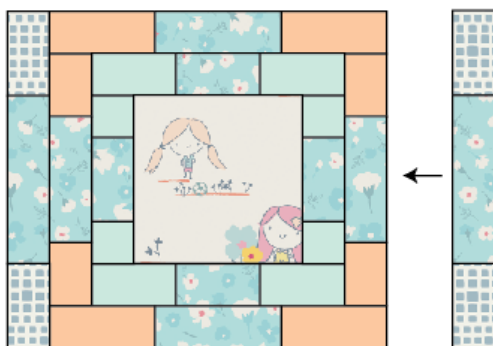
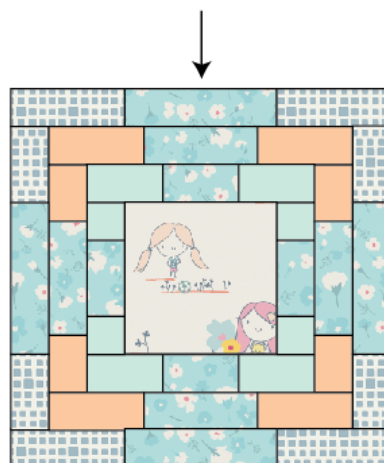
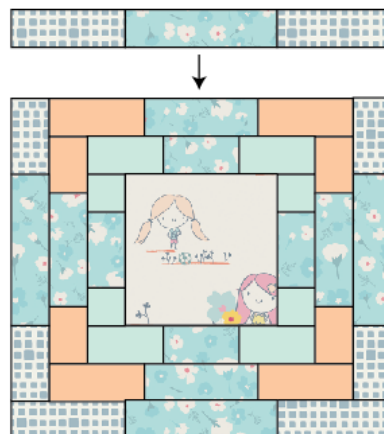


DIAGRAM 11

- Finish your block by joining two SS6, one on the top and one on the bottom of the unit, following the diagram below.







[artgalleryfabrics.com](http://artgalleryfabrics.com)

NOTE: While all possible care has been taken to ensure the accuracy of this pattern, We are not responsible for printing errors or the way in which individual work varies.  
Please read instructions carefully before starting the construction of this quilt. If desired, wash and iron your fabrics before starting to cut.

© 2019 Courtesy of Art Gallery Quilts LLC. All Rights Reserved.