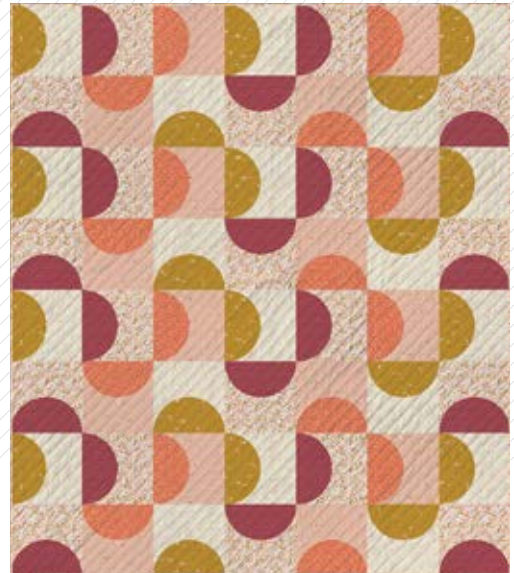




terras

QUILT DESIGNED BY AGFstudio



TERRAKOTTA

FABRICS DESIGNED BY AGF STUDIO



CAP-TK-1501
RIPPLING TERRAIN



CAP-TK-1503
CRAFTED SHAPES



CAP-TK-1504
STENCILED SUN



CAP-TK-1506
ARTISANAL BLOCKS



CAP-TK-1507
SUNBAKED TILE



CAP-TK-1509
TERRACOTTA MARKINGS



CAP-TK-1510
STENCILED BLUSH





FINISHED SIZE | 70" x 80"

FABRIC REQUIREMENTS

Fabric A	CAP-TK-1501	1½ yd.
Fabric B	CAP-TK-1503	1½ yd.
Fabric C	CAP-TK-1504	1 yd.
Fabric D	CAP-TK-1506	¾ yd.
Fabric E	CAP-TK-1507	1 yd.
Fabric F	CAP-TK-1509	¾ yd.
Fabric G	CAP-TK-1510	1¼ FQ.

BACKING FABRIC
CAP-TK-1500 6 yds (Suggested)

BINDING FABRIC
Fabric **D** (Included)

CUTTING DIRECTIONS

¼" seam allowances are included.
WOF means width of fabric.

- Twenty (20) template 1 from fabrics **A** and **B**.
- Sixteen (16) template 1 from fabric **G**.
- Twenty (20) template 2 from fabrics **C** and **E**.
- Sixteen (16) template 2 from fabric **F**.

CONSTRUCTION

Sew all rights sides together with ¼" seam allowance.

- Take twenty (20) template 1 from fabric **A** and twenty (20) template 2 from fabric **C**.
- Join them following diagram 1. You will end up with twenty (20) Block a.
- Take twenty (20) template 1 from fabric **B** and twenty (20) template 2 from fabric **E**.
- Join them following diagram 1. You will end up with twenty (20) Block b.
- Take sixteen (16) template 1 from fabric **G** and sixteen (16) template 2 from fabric **F**.
- Join them following diagram 1. You will end up with sixteen (16) Block c.

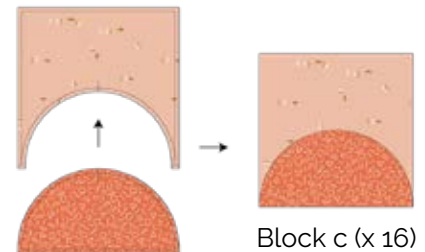
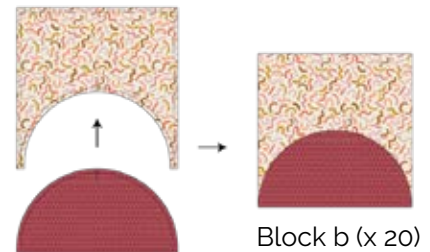
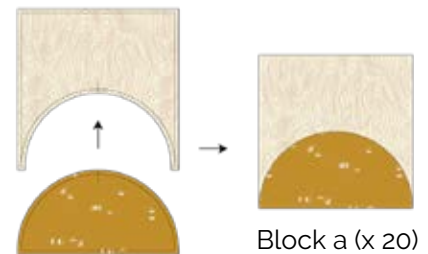


DIAGRAM 1

- Take twelve (12) block a, eight (8) block b, and eight (8) block c.
- Join them into four (4) row 1 following diagram 2:
- Row 1: a - b - c - a - b - c - a



Row 1 (x 4)

DIAGRAM 2

- Take eight (8) block a, twelve (12) block b, and eight (8) block c.
- Join them into four (4) row 2 following diagram 3.
- Row 2: b - c - a - b - c - a - b



Row 2 (x 4)

DIAGRAM 3

- Take all the rows and join them as follows:

- 1 - 2 - 1 - 2 - 1 - 2 - 1 - 2



DIAGRAM 4

QUILT ASSEMBLY

Sew rights sides together.

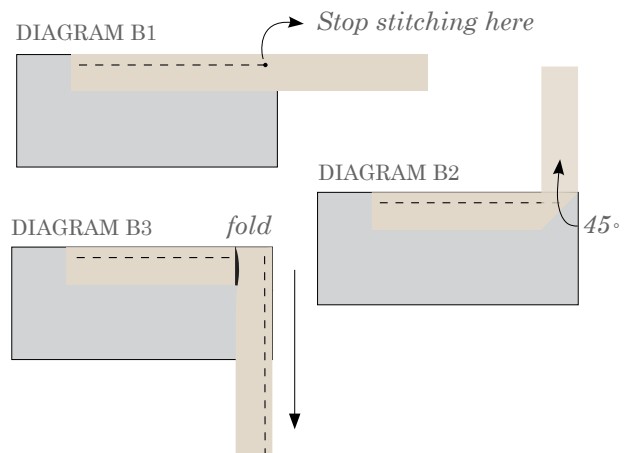
- Place BACKING FABRIC on a large surface wrong side up. Stretch it with masking tape against that surface.
- Place BATTING on top of backing fabric.
- Place TOP on top of the batting with right side facing up. Smooth away wrinkles using your hands.
- Pin all layers together and baste with basting thread, using long stitches. You can also use safety pins to join the layers.
- Machine or hand quilt starting at the center and working towards the corners. Remember that quilting motifs are a matter of personal preference. Have fun choosing yours!
- After you finished, trim excess of any fabric or batting, squaring the quilt to proceed to bind it.

BINDING

Sew rights sides together.

- Cut enough strips $1\frac{1}{2}$ " wide by the width of the fabric **D** to make a final strip 310" long. Start sewing the binding strip in the middle of one of the sides of the quilt, placing the strip right side down and leaving an approximated 5" tail. Sew with $\frac{1}{4}$ " seam allowance (using straight stitch), aligning the strip's raw edge with the quilt top's raw edge.
- Stop stitching $\frac{1}{4}$ " before the edge of the quilt (DIAGRAM B 1). Clip the threads. Remove the quilt from under the machine presser foot. Fold the strip in a motion of 45° and upward, pressing with your fingers (DIAGRAM B2). Hold this fold with your finger, bring the strip down in line with the next edge, making a horizontal fold that aligns with the top edge of the quilt (DIAGRAM B3). Start sewing at $\frac{1}{4}$ " of the border, stitching all the layers. Do the same in the four corners of the quilt.

- Stop stitching before you reach the last 5 or 6 inches. Cut the threads and remove the quilt from under the machine presser foot. Lay the loose ends of the binding flat along the quilt edge, folding the ends back on themselves where they meet. Press them together to form a crease. Using this crease as the stitching line, sew the two open ends of the binding with right sides together (you can help yourself marking with a pencil if the crease is difficult to see).
- Trim seam to $\frac{1}{4}$ " and press open. Complete the sewing. Turn binding to back of the quilt, turn raw edge inside and stitch by hand using blind stitch.



XXXXXXXXXXXXXXXXXXXXXXXXXXXXXXXXXXXX

*Congratulations
& enjoy*

XXXXXXXXXXXXXXXXXXXXXXXXXXXXXXXXXXXX



artgalleryfabrics.com

NOTE: While all possible care has been taken to ensure the accuracy of this pattern, We are not responsible for printing errors or the way in which individual work varies.

Please read instructions carefully before starting the construction of this quilt. If desired, wash and iron your fabrics before starting to cut.

© 2020 Courtesy of Art Gallery Quilts LLC. All Rights Reserved.

1"x1"
Test
Square

