

XXXXXXXXXXXXXXXXXXXX



DESIGNED BY *AGFstudio*



TERRAKOTTA

FABRICS DESIGNED BY AGF STUDIO



CAP-TK-1500
DESERT FLORA



CAP-TK-1501
RIPPLING TERRAIN



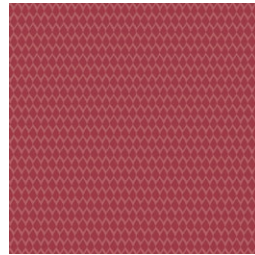
CAP-TK-1504
STENCILED SUN



CAP-TK-1505
FRECKLED LEAVES



CAP-TK-1506
ARTISANAL BLOCKS



CAP-TK-1507
SUNBAKED TILE



CAP-TK-1508
SCULPTED MOTIF



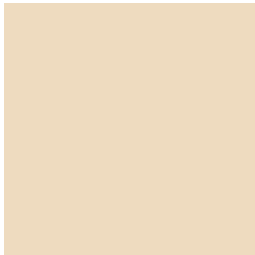
CAP-TK-1509
TERRACOTTA MARKINGS



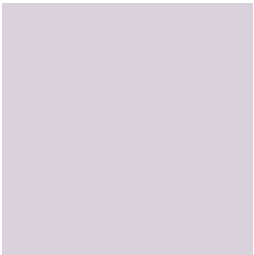
CAP-TK-1510
STENCILED BLUSH



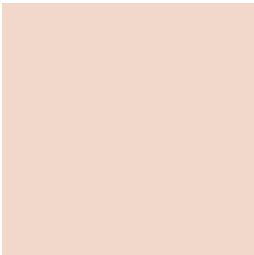
ADDITIONAL BLENDERS FOR THIS PROJECT



PE-436
CREME DE LA CREME



PE-470
LAVENDER WATER



PE-471
SWEET MACADAMIA



FINISHED SIZE | 12" x 12"

FABRIC REQUIREMENTS

Block 1

Fabric A	CAP-TK-1500	FQ
Fabric B	CAP-TK-1504	FQ
Fabric C	PE-471	FQ

Block 2

Fabric A	CAP-TK-1509	FQ
Fabric B	PE-436	FQ
Fabric C	CAP-TK-1508	FQ

Block 3

Fabric A	CAP-TK-1510	FQ
Fabric B	CAP-TK-1505	FQ
Fabric C	CAP-TK-1501	FQ

Block 4

Fabric A	CAP-TK-1506	FQ
Fabric B	PE-470	FQ
Fabric C	CAP-TK-1507	FQ

CUTTING DIRECTIONS

*1/4" seam allowances are included.
WOF means width of fabric.*

- Two (2) template 1 from fabric **A**.
- Ten (10) 18" x 1" strips from fabric **B** and **C**.

CONSTRUCTION

Sew all rights sides together with 1/4" seam allowance.

- Take ten (10) 18" x 1" strips from fabrics **B** and **C**.
- Join them into two (2) blocks:
- **B - C - B - C - B - C - B - C - B - C** x 2



DIAGRAM 1

- Sub-cut the blocks into four (4) 5½" squares.



DIAGRAM 2

- Join the squares following diagram 3.

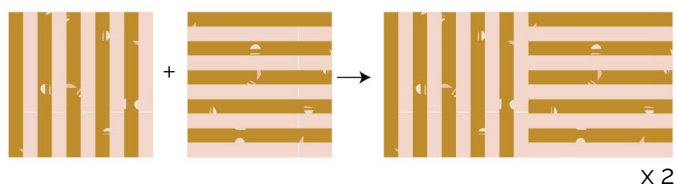


DIAGRAM 3

- Take template 2 and cut it following diagram 4.

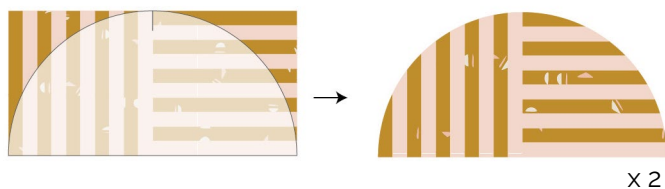


DIAGRAM 4

- Join template 1 to template 2. As a result you will have two (2) template 1-2 blocks.

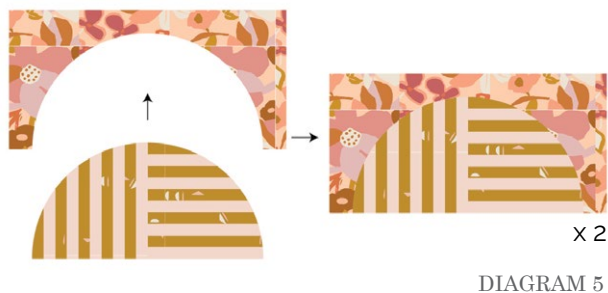


DIAGRAM 5

- Join the two blocks.

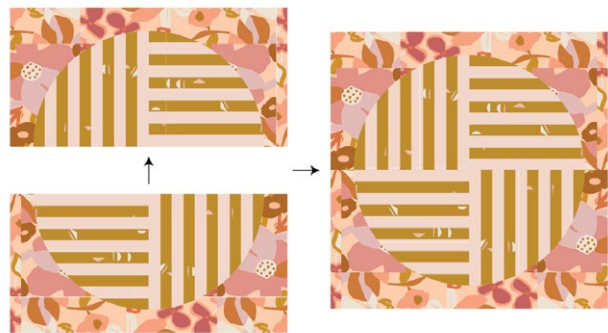


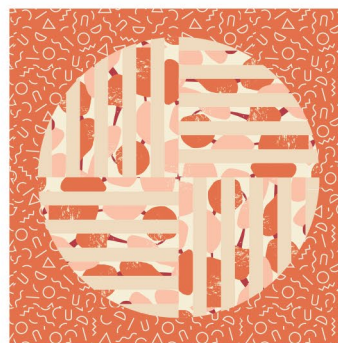
DIAGRAM 6

- You have made block 1.
- Follow the same instructions to make block 2, 3, and 4.

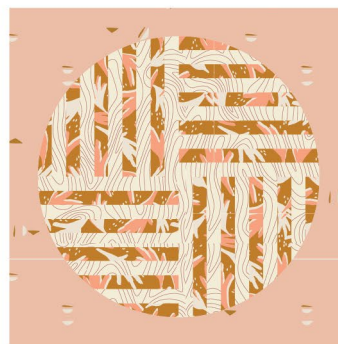
Block 1



Block 2



Block 3



Block 1



XXXXXXXXXXXXXXXXXXXXXXXXXXXXXXXXXXXX

*Congratulations
& enjoy*

XXXXXXXXXXXXXXXXXXXXXXXXXXXXXXXXXXXX



artgalleryfabrics.com

NOTE: While all possible care has been taken to ensure the accuracy of this pattern, We are not responsible for printing errors or the way in which individual work varies.

Please read instructions carefully before starting the construction of this quilt. If desired, wash and iron your fabrics before starting to cut.

© 2020 Courtesy of Art Gallery Quilts LLC. All Rights Reserved.

