

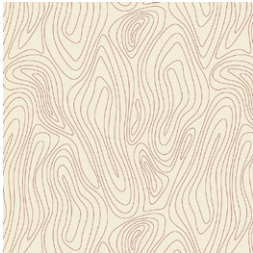
X  
X  
X  
X  
X  
X  
X  
X  
X  
X  
X  
X



XXXXXXXXXXXXXXXXXXXX



**TERRAKOTTA**  
FABRICS DESIGNED BY AGF STUDIO



CAP-TK-1501  
RIPPLING TERRAIN



CAP-TK-1504  
STENCILED SUN



CAP-TK-1503  
CRAFTED SHAPES



CAP-TK-1510  
STENCILED BLUSH







Fabric <b>A</b>	CAP-TK-1501	$\frac{1}{8}$ yd.
Fabric <b>B</b>	CAP-TK-1503	$\frac{1}{8}$ yd.
Fabric <b>C</b>	CAP-TK-1504	1 yd.
Fabric <b>D</b>	CAP-TK-1510	$\frac{1}{8}$ yd.

Fabric **C** (Included)

*1/4" seam allowances are included.  
WOF means width of fabric.*

- Twelve (12) template 2 from fabrics **A**, **B**, and **D**.
- Thirty six (36) template 1 from fabric **C**.
- Two (2) 18½" x 14½" rectangles from fabric **C**.

*Sew all rights sides together with ¼"seam allowance.*

- Join every template 1 to a template 2. As a result you will have block a, block b, and block c.
- For fabric placement and attachment follow diagram 1.



- Take four (4) block a, block b, and block c.
- Join them into two (2) row 1:
- Row 1: b - c - a - b - c - a

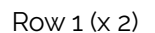


DIAGRAM 2

- Take four (4) block a, block b, and block c.
- Join them into two (2) row 2:
- Row 2: a - b - c - a - b - c

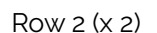


DIAGRAM 3

- Take four (4) block a, block b, and block c.
- Join them into two (2) row 3:
- Row 2: c - a - b - c - a - b

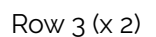


DIAGRAM 4

- Join the rows as follows:
- 1 - 2 - 3 - 1 - 2 - 3

Row 1



Row 2



Row 3



Row 1



Row 2



Row 3



DIAGRAM 5

## BACK OF THE PILLOW

*Sew rights sides together.*

- Take both 18½" x 14½" rectangles from fabric **C**.
- Fold one 13" edge ½" towards the wrong side of the fabric of each rectangle.
- Fold the same edge ½" again and edge stitch the fold in place to have a clean edge.
- Take the quilted pillow top and lay it flat right side up.
- Take one rectangle from fabric **C** and align it wrong side up to the right side of the pillow top.
- Take the other rectangle from fabric **C** and align it wrong side up to the left side of the pillow top.
- Pin the three pieces in place and sew around the edges at ¼".
- Clip the corners and flip the piece to the right side of the fabric.
- Fill the pillow with a 18" x 18" pillow form and enjoy!



[artgalleryfabrics.com](http://artgalleryfabrics.com)

NOTE: While all possible care has been taken to ensure the accuracy of this pattern, We are not responsible for printing errors or the way in which individual work varies.

Please read instructions carefully before starting the construction of this quilt. If desired, wash and iron your fabrics before starting to cut.

© 2020 Courtesy of Art Gallery Quilts LLC. All Rights Reserved.

