

Eve Pillow

DESIGNED BY AGFstudio



COZY & Joyful

FABRICS DESIGNED BY MAUREEN CRACKNELL



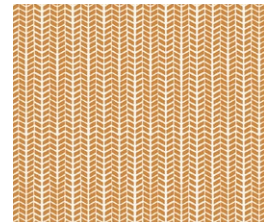
CJO-12592
SNOWING NIGHT



CJO-12583
GINGER JOY



CJO-12591
MAKE SNOW FLURRIES



CJO-12586
HERRINGBONE GOLD



CJO-12585
NORTHERN LIGHTS



CJO-12582
SNOWING BRIGHT

ADDITIONAL BLENDERS FOR THIS PROJECT



DEN-S-2006
ADOBE CLAY



FEEL THE DIFFERENCE

Eve Pillow

FINISHED SIZE | 24" x 12½"

FABRIC REQUIREMENTS

Fabric A	CJO-12592	Fat 8.
Fabric B	CJO-12583	Fat 8.
Fabric C	CJO-12591	Fat 8.
Fabric D	CJO-12586	Fat 8.
Fabric E	CJO-12585	Fat 8.
Fabric F	CJO-12582	Fat 8.
Fabric G	DEN-S-2006	½ yd.

BACKING FABRIC
DEN-S-2006 (Included)

CUTTING DIRECTIONS

¼" seam allowances are included.
WOF means width of fabric.

- One (1) 6½" x 12½" rectangle from fabric **A**
- One (1) 3½" x 12½" rectangle from fabric **B**
- One (1) 3½" x 12½" rectangle from fabric **C**
- One (1) 3½" x 12½" rectangle from fabric **D**
- One (1) 3½" x 12½" rectangle from fabric **E**
- One (1) 6½" x 12½" rectangle from fabric **F**
- One (1) 24½" x 12½" rectangle from fabric **G**
- Two (2) 16" x 12½" rectangles from fabric **G** (backing)

CONSTRUCTION

Sew all rights sides together with ¼" seam allowance.

- Join fabrics **A-F** following the diagram below.

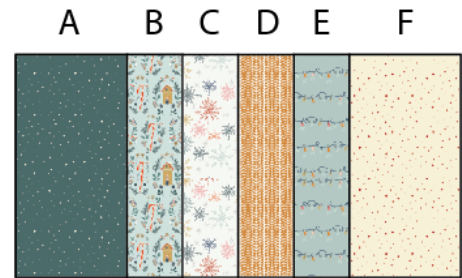


DIAGRAM 1

- Take one 24½" x 12½" rectangle from fabric **G** and measure 2½" from the top down, 3½" from the left edge in, place your tree template, using a water soluble pen.

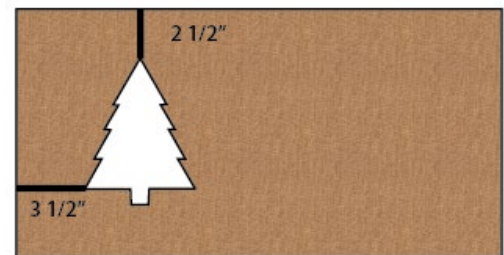


DIAGRAM 2

- Trace the template again, this time ½" from the first traced tree, following the diagram below.

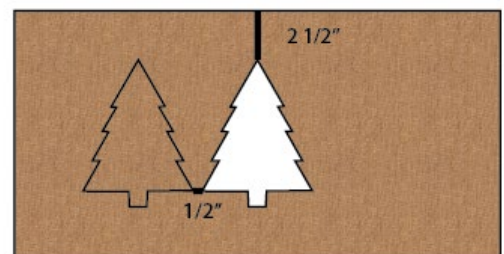


DIAGRAM 3

