

X
X
X
X
X
X
X
X
X
X
X
X



Bauble

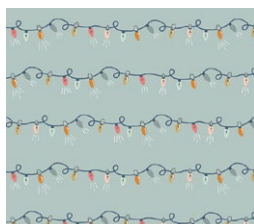
BLOCKS DESIGNED BY AGFstudio



FABRICS DESIGNED BY MAUREEN CRACKNELL



CJO-12580
FROSTED ROSES



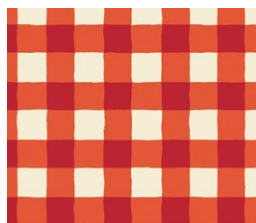
CJO-12585
NORTHERN LIGHTS



CJO-12582
SNOWING BRIGHT



CJO-12583
GINGER JOY



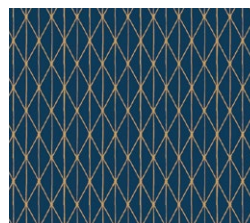
CJO-12584
PLAID OF MY DREAMS JOYFUL



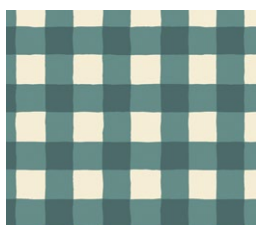
CJO-12587
UNDER THE MISTLETOE



CJO-12588
JOLLY MARCH



CJO-12589
MIDWINTER DUSK



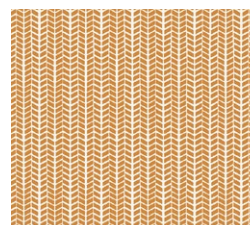
CJO-12590
PLAID OF MY DREAMS COZY



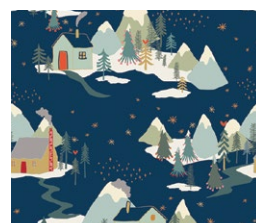
CJO-12591
MAKE SNOW FLURRIES



CJO-12592
SNOWING NIGHT



CJO-12586
HERRINGBONE GOLD



CJO-12593
WINTER WONDERLAND



FEEL THE DIFFERENCE

© 2020 Courtesy of Art Gallery Quilts LLC. All Rights Reserved.

ADDITIONAL BLENDERS FOR THIS PROJECT



PE-461
TIGERLILY



PE-452
SPRUCE



FE-513
HONEY MUSTARD



FINISHED SIZE | 12" x 12"

FABRIC REQUIREMENTS

Block 1

Fabric A	CJO-12580	F8
Fabric B	CJO-12589	¼ Yd
Fabric C	CJO-12586	F8
Fabric D	CJO-12583	F8
Fabric E	PE-461	F8

Block 2

Fabric A	CJO-12588	F8
Fabric B	CJO-12592	¼ Yd
Fabric C	PE-452	F8
Fabric D	CJO-12586	F8
Fabric E	CJO-12584	F8

Block 3

Fabric A	CJO-12587	F8
Fabric B	CJO-12591	¼ Yd
Fabric C	CJO-12589	F8
Fabric D	CJO-12590	F8
Fabric E	FE-513	F8

Block 4

Fabric A	CJO-12593	F8
Fabric B	CJO-12582	¼ Yd
Fabric C	PE-461	F8
Fabric D	CJO-12584	F8
Fabric E	CJO-12585	F8

CUTTING DIRECTIONS

¼" seam allowances are included.
WOF means width of fabric.

- One (1) 7½" square from fabric **A**.
- Four (4) 2¼" squares from fabric **B**.
- Two (2) 2¼" x 1½" rectangles from fabric **B**.
- Two (2) 8½" x 1½" strips from fabric **B**.
- Two (2) 4½" x 2" rectangles from fabric **B**.
- One (1) 9½" x 3" rectangle from fabric **B**.
- Two (2) 12½" x 2" strips from fabric **B**.
- One (1) 2" x 1½" rectangles from fabric **C**.
- Four (4) 3½" squares from fabric **D**.
- One (1) 4" x 1½" rectangle from fabric **E**.

CONSTRUCTION

Sew all rights sides together with ¼" seam allowance.

- Start by aligning one (1) 2¼" square from fabric **B** on each corner of one (1) 7½" square from fabric **A**, right sides together.
- Sew each square diagonally, and trim ¼" away from the seam line and press.



DIAGRAM 1

- Take two (2) $2\frac{1}{4}" \times 1\frac{1}{2}"$ rectangles from fabric **B** and one (1) $4" \times 1\frac{1}{2}"$ rectangle from fabric **E**.
- Arrange them as shown on diagram below to get a **BEB** strip.



DIAGRAM 2

- Attach **BEB** strip to the top of the center of the block.



DIAGRAM 3

- Join one (1) $8\frac{1}{2}" \times 1\frac{1}{2}"$ strips from fabric **B** to each side of the sewn unit.



DIAGRAM 4

- Take two (2) $4\frac{1}{2}" \times 2"$ rectangle from fabric **B** and one (1) $1\frac{1}{2}" \times 2"$ rectangle from fabric **C**.
- Arrange them as shown on diagram below to get a **BCB** strip.

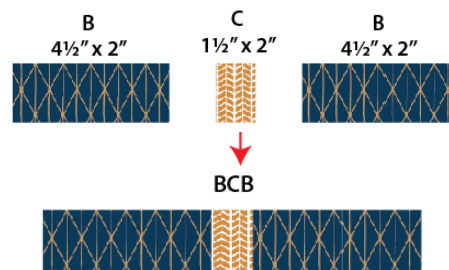


DIAGRAM 5

- Attach the BCB strip to the top and one (1) $9\frac{1}{2}" \times 3"$ rectangle from fabric **B** to the bottom of the sewn unit.

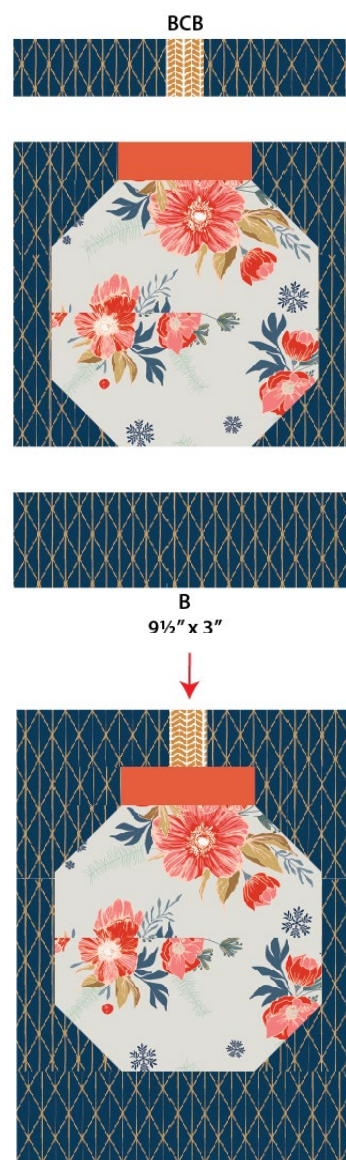


DIAGRAM 6

- Attach one (1) 12½" x 2" strip from fabric **B** to each side of the sewn unit.



DIAGRAM 7

- Take four (4) 3½" square from fabric **B**, align them on each corner of the 12½" square block facing right sides together.
- Sew each square diagonally. See diagram 8 for reference
- Trim ¼" away from the seam line and press.



DIAGRAM 8

- Repeat the same steps to make the rest of the blocks..

XXXXXXXXXXXXXXXXXXXXXXXXXXXXXXXXXXXX

*Congratulations
& enjoy*

XXXXXXXXXXXXXXXXXXXXXXXXXXXXXXXXXXXX



artgalleryfabrics.com

NOTE: While all possible care has been taken to ensure the accuracy of this pattern, We are not responsible for printing errors or the way in which individual work varies.

Please read instructions carefully before starting the construction of this quilt. If desired, wash and iron your fabrics before starting to cut.

© 2020 Courtesy of Art Gallery Quilts LLC. All Rights Reserved.