

Agneta

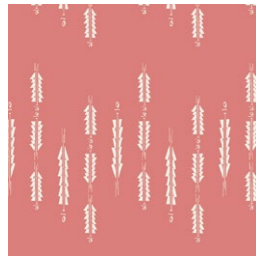


DESIGNED BY AGFstudio

Rosewood FUSION



FUS-RW-190
SWIFTING FLORA ROSEWOOD
by Maureen Cracknell



FUS-RW-1902
AURA FLETCHINGS ROSEWOOD
by Maureen Cracknell



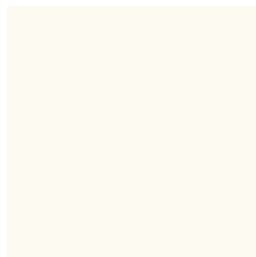
FUS-RW-1903
WILD BEAUTY ROSEWOOD
by Maureen Cracknell



FUS-RW-190
DISCOVERED ROSEWOOD
by Bonnie Christine



ADDITIONAL BLENDERS FOR THIS PROJECT



PE-408
WHITE LINEN



PE-436
CREME DE LA CREME



PE-450
GRAPEFRUIT



PE-458
TOASTY WALNUT



PE-471
SWEET MACADAMIA



PE-486
VANILLA CUSTARD



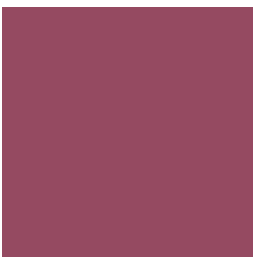
PE-488
BLOSSOMED



PE-489
MIAMI SUNSET



PE-493
PLUM PRESERVE



PE-494
DRIED ROSES



FINISHED SIZE | 16" x 16"

FABRIC REQUIREMENTS

Fabric A	FUS-RW-1903	F8
Fabric B	FUS-RW-1908	F8
Fabric C	FUS-RW-1902	F8
Fabric D	FUS-RW-1900	F8
Fabric E	PE-488	F8
Fabric F	PE-493	F8
Fabric G	PE-489	F8
Fabric H	PE-486	5/8yd
Fabric I	PE-458	F8
Fabric J	PE-471	F8
Fabric K	PE-408	F8
Fabric L	PE-436	F8
Fabric M	PE-494	F8
Fabric N	PE-450	F8

BACKING FABRIC

Fabric **H** - PE-486 (Included)

CUTTING DIRECTIONS

*1/4" seam allowances are included.
WOF means width of fabric.*

- Five (5) template 2 from fabrics **A, K**
- Four (4) template 1 from fabric **B**
- Two (2) template 2 from fabrics **B, C, D, F, H**
- Six (6) template 1 from fabric **E**
- Three (3) template 2 from fabric **E**
- Three (3) template 1 from fabrics **F, I, J**
- One (1) template 1 from fabrics **G, K, L, M**
- Seven (7) template 1 from fabric **H**
- Two (2) 16½" x 13" rectangle from fabric **H**
- Four (4) template 2 from fabric **J**
- Two (2) template 2 from fabric **L**
- One (1) template 2 from fabric **N**

CONSTRUCTION

Sew all rights sides together with 1/4" seam allowance.

- Join template 1 and template 2 following the fabric combinations below.

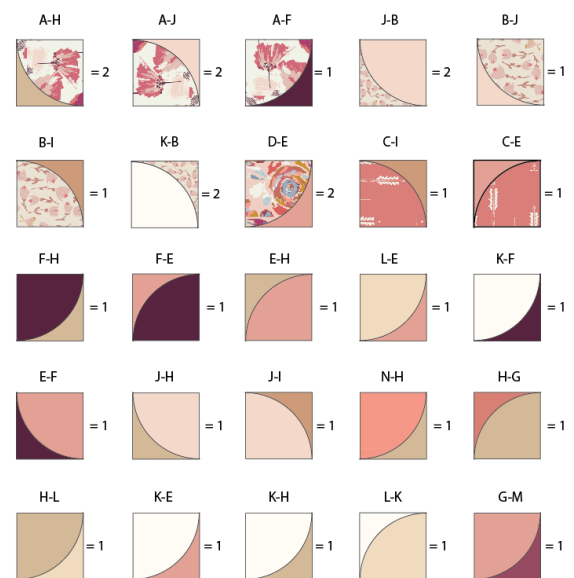


DIAGRAM 1

- Trim the pillow top to 16½" x 16½".



- Join all rows together following the diagram below.



DIAGRAM 3

CREATING THE BACK PILLOW

Sew all rights sides together with $\frac{1}{4}$ " seam allowance. Press open.

- Take both $16\frac{1}{2}$ " x 13" rectangles from fabric **H**.
- Fold one bottom edge $\frac{1}{2}$ " towards the wrong side of the fabric of one of the rectangle.
- Fold the same edge $\frac{1}{2}$ " again and edge stitch the fold in place to have a clean edge.
- Repeat the same for the top edge of the bottom piece.
- Take the quilted pillow top and lay it flat right side up.
- Take one rectangle from fabric A and align it wrong side up to the right side of the pillow top.
- Take the other rectangle from fabric A and align it wrong side up to the left side of the pillow top.
- Pin the three pieces in place and sew around the edges at $\frac{1}{4}$ ".
- Clip the corners and flip the piece to the right side of the fabric.
- Fill the pillow with a 16" x 16" pillow form and enjoy!

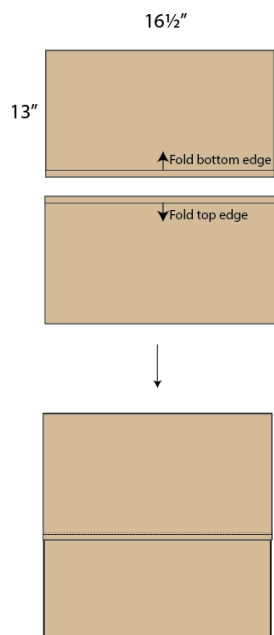


DIAGRAM 5

XXXXXXXXXXXXXXXXXXXXXXXXXXXX

*Congratulations
& enjoy*

XXXXXXXXXXXXXXXXXXXXXXXXXXXX



artgalleryfabrics.com

NOTE: While all possible care has been taken to ensure the accuracy of this pattern, We are not responsible for printing errors or the way in which individual work varies.

Please read instructions carefully before starting the construction of this quilt. If desired, wash and iron your fabrics before starting to cut.

© 2020 Courtesy of Art Gallery Quilts LLC. All Rights Reserved.

TEMPLATES

