

## A complex geometric pattern featuring a central vertical band with a repeating diamond motif in shades of brown, orange, and purple. This band is flanked by diagonal stripes of white and brown, creating a symmetrical, quilt-like design.

XXXXXXXXXXXXXXXXXXXXXXXXXXXX

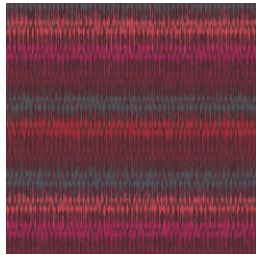


# Adora

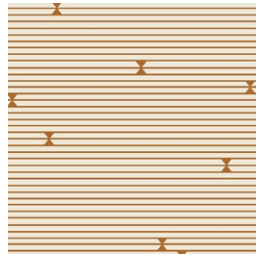
DESIGNED BY AGFstudio



Trinkets FUSION



FUS-T-1408  
LOOMING LOVE TRINKETS



FUS-T-1401  
GRAN PIANO TRINKETS

## ADDITIONAL BLENDERS FOR THIS PROJECT



FE 503  
RUSSET ORANGE



FEEL THE DIFFERENCE © 2018 Courtesy of Art Gallery Quilts LLC. All Rights Reserved.

# Adora

FINISHED SIZE | 18" x 18"

## FABRIC REQUIREMENTS

Fabric **A** FUS-T-1408  $\frac{3}{8}$  yd.  
 Fabric **B** FUS-T-1401  $\frac{3}{8}$  yd.  
 Fabric **C** FE-503  $\frac{7}{8}$  yd.

BACKING FABRIC  
 FE-503 (included)

## CUTTING DIRECTIONS

*$\frac{1}{4}$ " seam allowances are included.*

- Three (3)  $2\frac{1}{2}$ " x WOF strips from fabric **A, B, C**
- Four (4)  $4\frac{1}{2}$ " x  $2\frac{1}{2}$ " rectangles from fabric **A**
- Three (3)  $4\frac{1}{2}$ " x  $2\frac{1}{2}$ " rectangles from fabric **B**
- Fourteen (14)  $2\frac{1}{2}$ " x  $2\frac{1}{2}$ " squares from fabric **C**
- Four (4) 2" x  $18\frac{1}{2}$ " strips from fabric **C**
- Four (4)  $4\frac{1}{2}$ " x  $1\frac{1}{2}$ " rectangles from fabric **C**
- Two (2)  $18\frac{1}{2}$ " x 14" rectangles from fabric **C**

## CONSTRUCTION

*Sew all rights sides together with  $\frac{1}{4}$ " seam allowance.*

- Join fabrics **A, B, C**  $2\frac{1}{2}$ " x WOF strips in the following order.



DIAGRAM 1

- Cut 2 rectangles of  $2\frac{1}{2}$ " x  $18\frac{1}{2}$ " at a  $45^\circ$  angle from right to left up.
- Cut 2 rectangles of  $2\frac{1}{2}$ " x  $18\frac{1}{2}$ " at a  $45^\circ$  angle from left to right up.



DIAGRAM 2

### Flying Geese Method:

- Take one (1)  $4\frac{1}{2}$ " x  $2\frac{1}{2}$ " rectangle from fabric **B** two (2)  $2\frac{1}{2}$ " squares from fabric **C**.
- Draw a guideline from corner to corner on the wrong side of one of fabric **C** squares.
- Place fabric **C** square on one side of fabric **B** rectangle, right sides facing.
- Sew along the guideline. Using a rotary cutter and ruler, trim  $\frac{1}{4}$ " from the seam. Press out.
- Place another fabric **C** square on the other side of fabric **B** rectangle, right sides facing.
- Sew along the guideline. Using a rotary cutter and ruler, trim  $\frac{1}{4}$ " from the seam. Press out.
- Create a total of three (3) **B-C** flying geese.

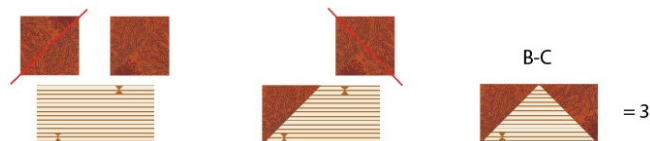


DIAGRAM 3

- Repeat the same flying geese instruction taking four (4)  $4\frac{1}{2}$ " x  $2\frac{1}{2}$ " rectangle from fabric **A** and eight (8)  $2\frac{1}{2}$ " squares from fabric **C**, to create a total of four **A-C** pieces.

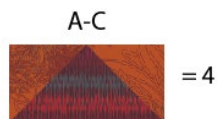


DIAGRAM 4

- Now, take the **A-C** and **B-C** flying geeses, and four (4)  $4\frac{1}{2}$ " x  $1\frac{1}{2}$ " strips from fabric **C** and join them following the diagram below.

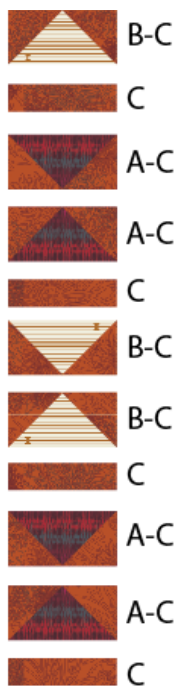


DIAGRAM 5

## ASSEMBLING THE TOP

- Now, follow the diagram below for each piece assembly



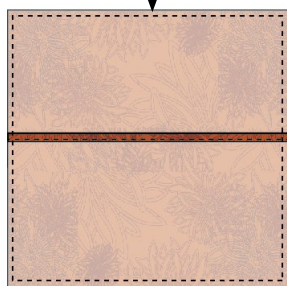
DIAGRAM 6

## CREATING THE BACK PILLOW

*Sew all rights sides together with  $\frac{1}{4}$ " seam allowance. Press open.*

- Take both  $18\frac{1}{2}$ " x 14" rectangles from fabric **C**.
- Fold one bottom edge  $\frac{1}{2}$ " towards the wrong side of the fabric of one of the rectangle.
- Fold the same edge  $\frac{1}{2}$ " again and edge stitch the fold in place to have a clean edge.
- Repeat the same for the top edge of the bottom piece.
- Take the quilted pillow top and lay it flat right side up.
- Take one rectangle from fabric **C** and align it wrong side up to the right side of the pillow top.
- Take the other rectangle from fabric **A** and align it wrong side up to the left side of the pillow top.
- Pin the three pieces in place and sew around the edges at  $\frac{1}{4}$ ".

- Clip the corners and flip the piece to the right side of the fabric.
- Fill the pillow with a 18" x 18" pillow form and enjoy!



[artgalleryfabrics.com](http://artgalleryfabrics.com)

NOTE: While all possible care has been taken to ensure the accuracy of this pattern, We are not responsible for printing errors or the way in which individual work varies.

Please read instructions carefully before starting the construction of this quilt. If desired, wash and iron your fabrics before starting to cut.