



capsules
by AGF

Travel Buddies



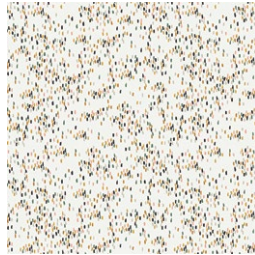
BLOCKS DESIGNED BY *AGFstudio*



FABRICS DESIGNED BY AGF STUDIO



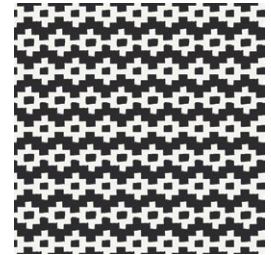
CAP-PA-1400
WILD FRIENDS



CAP-PA-1410
SAND ESCAPE



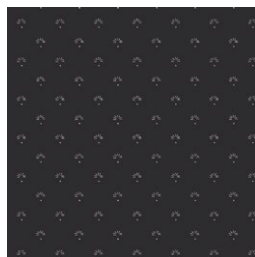
CAP-PA-1402
INTI WASI



CAP-PA-1405
ETCHED PATHWAYS



CAP-PA-1404
CACTUS STAMPS



CAP-PA-1411
SOLAR ECLIPSE



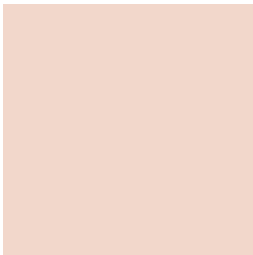
CAP-PA-1406
BORN TO ROAM



CAP-PA-1407
INCA TRAIL



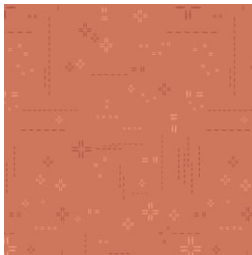
ADDITIONAL BLENDERS FOR THIS PROJECT



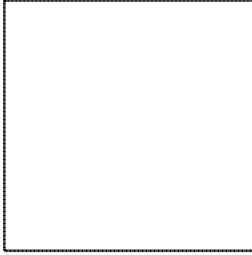
PE-471
SWEET MACADAMIA



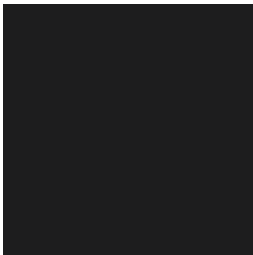
PE-411
QUARTZ PINK



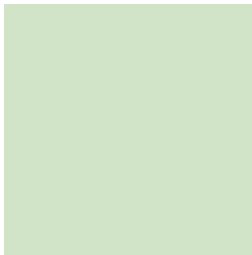
DES-713
RED DESERT



PE-433
SNOW



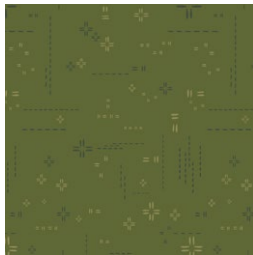
PE-413
CAVIAR



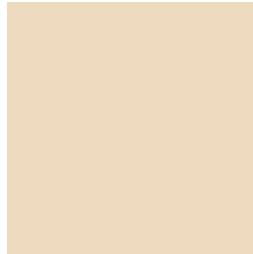
PE-443
SWEET MINT



PE-447
PATINA GREEN



DES-705
MORNING MOSS



PE-436
CREME DE LA CREME



PE-458
TOASTY WALNUT



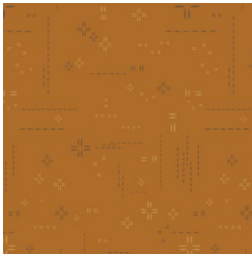
DES-715
CAFE LATTE



PE-421
HONEY



PE-485
RAW GOLD



DES-714
PECAN PRALINE

FABRIC REQUIREMENTS

Block 1

Fabric A	CAP-PA-1400	F8
Fabric B	CAP-PA-1410	F8
Fabric C	PE-471	F8
Fabric D	PE-411	F8
Fabric E	DSE-713	F8
Fabric F	PE-433	F8
Fabric G	PE-413	F8

Block 2

Fabric A	CAP-PA-1402	F8
Fabric B	CAP-PA-1405	F8
Fabric C	PE-443	F8
Fabric D	PE-447	F8
Fabric E	DSE-705	F8
Fabric F	PE-433	F8
Fabric G	PE-413	F8

Block 3

Fabric A	CAP-PA-1404	F8
Fabric B	CAP-PA-1401	F8
Fabric C	PE-436	F8
Fabric D	PE-458	F8
Fabric E	DSE-715	F8
Fabric F	PE-433	F8
Fabric G	PE-413	F8

Block 4

Fabric A	CAP-PA-1406	F8
Fabric B	CAP-PA-1407	F8
Fabric C	PE-421	F8
Fabric D	PE-485	F8
Fabric E	DSE-714	F8
Fabric F	PE-433	F8
Fabric G	PE-413	F8

CUTTING DIRECTIONS

*¼" seam allowances are included.
WOF means width of fabric.*

- One (1) 6½" x square from fabric **A**
- Four (4) 3½" x 2" rectangles from fabric **B**
- Three (3) 3¼" squares from fabric **B**
- Four (4) 2½" squares from fabric **C**
- Eight (8) 2" squares from fabric **C**
- Two (2) 3¼" squares from fabric **C**
- Four (4) 3½" x 2" rectangles from fabric **D**
- One (1) 3¼" square from fabric **D**
- Five (5) 3¼" squares from fabric **E**
- Four (4) 3¼" squares from fabric **F**
- Eight (8) 2" squares from fabric **F**
- One (1) 3¼" square from fabric **G**

CONSTRUCTION

Sew all rights sides together with ¼" seam allowance.

- Take one 6½" square from fabric **A** and four 2½" squares from fabric **C**.
- Place one square on each corner of fabric **A**, right sides facing together.
- Stitch at the diagonal and trim excess fabric, leaving ¼" seam allowance, following the diagram below.

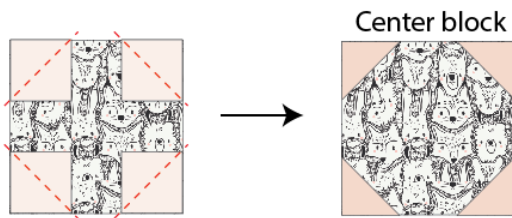


DIAGRAM 1

Flying Geese construction

- Take one 3½" x 2" rectangle from fabric **B** and two 2" squares from fabric **F**.
- Draw a guideline from corner to corner on the wrong side of one of fabric **F** squares.
- Place fabric **F** square on one side of fabric **B** rectangle, right sides facing.
- Sew along the guideline. Using a rotary cutter and ruler, trim ¼" from the seam. Press open.
- Repeat the same step for the other fabric **F** square.

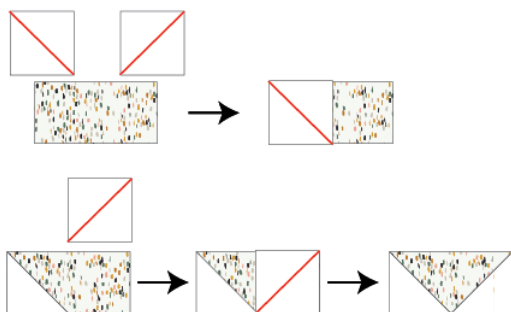


DIAGRAM 2

- Repeat the same instruction by taking three 3½" x 2" rectangles from fabric **B** and six 2" squares from fabric **F** in order to create a total of four **F-B-F** flying geese.

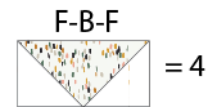


DIAGRAM 3

- Take four 3½" x 2" rectangles from fabric **D** and eight 2" squares from fabric **C** and repeat the same flying geese construction in order to assemble four **C-D-C** flying geese.

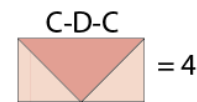


DIAGRAM 4

Four at a time half square triangle (HST) construction

- Take one 3¼" square from fabrics **C** and **F** place them right sides facing together.
- Straight stitch all the way around the edge of the square using ¼" seam.
- Mark a diagonal line across both diagonals on the wrong side of the **F** fabric square.
- Using your rotary blade, cut the square in quarters following the drawn diagonal lines.
- Trim each block to 1½" x 1½".

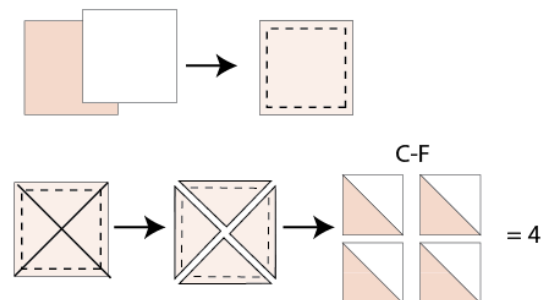


DIAGRAM 5

- Pair one 3¼" from fabrics **C** and **F** and repeat the same instruction to create four more **C-F** hst's.

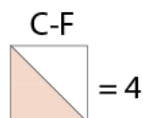


DIAGRAM 6

- Take three 3¼" squares from fabric **B**, five 3¼" squares from fabric **E** and one 3¼" square from fabrics **D** and **G** and repeat the same four at the time hst to assemble the following blocks:

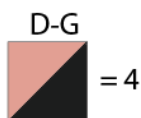
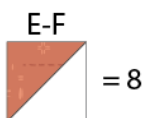
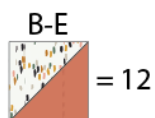


DIAGRAM 7

- Join one **C-D-C** flying geese and two **E-F** hst's following the diagram below.
- Take one **C-D-C** flying geese and two **E-F** hst's and repeat the same construction.



DIAGRAM 8

- Join one **F-B-F** flying geese and two **B-E** hsts's following the diagram below.
- Join one **F-B-F** flying geese and two **B-E** hsts's following the diagram below.

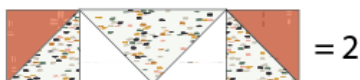


DIAGRAM 9

- Now, join one strip of each following the diagram below.

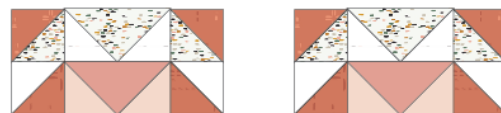


DIAGRAM 9

- Rotate each piece and join one on each side of the center block, following the diagram below.



DIAGRAM 10

Row 1 and 5 assembly

- Take four **C-F**, **B-E** and **D-G** hst's and two **F-B-F** flying geese and create two strips following the diagram below.



DIAGRAM 11

Row 2 and 4 assembly

- Take four **C-F**, **B-E** and **E-F** hst's and two **C-D-C** flying geese and create two strips following the diagram below.

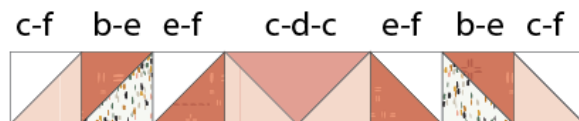


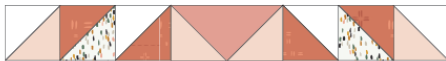
DIAGRAM 12

- Follow the diagram below for rows 1-5 assembly to complete your block.

Row 1



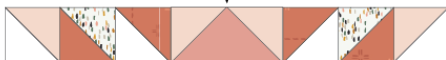
Row 2



Row 3



Row 4



Row 5

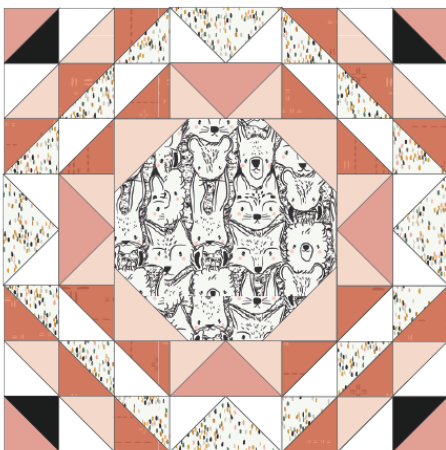


DIAGRAM 13

- To assemble the other blocks, use the following guide below and repeat the same instructions from block 1

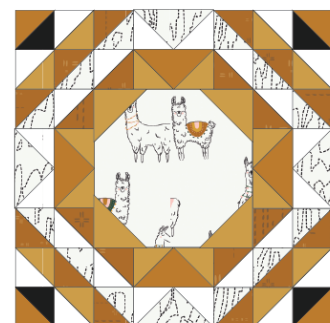
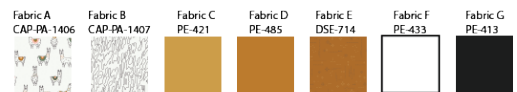
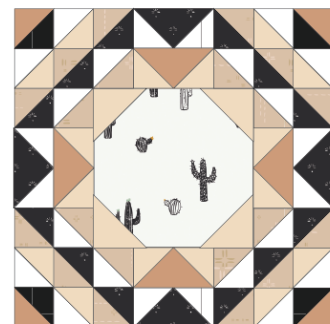
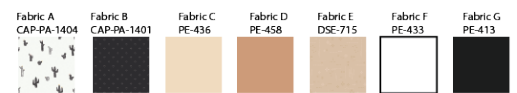
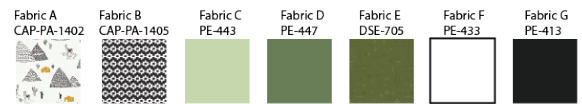


DIAGRAM 14

XXXXXXXXXXXXXXXXXXXXXXXXXXXX

*Congratulations
& enjoy*

XXXXXXXXXXXXXXXXXXXXXXXXXXXX



artgalleryfabrics.com

NOTE: While all possible care has been taken to ensure the accuracy of this pattern, We are not responsible for printing errors or the way in which individual work varies.

Please read instructions carefully before starting the construction of this quilt. If desired, wash and iron your fabrics before starting to cut.

© 2020 Courtesy of Art Gallery Quilts LLC. All Rights Reserved.