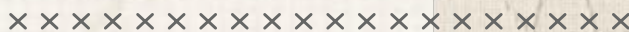




Scaped



FREE PATTERN



Scaped

DESIGNED BY AGFstudio



Flowerette

FABRICS DESIGNED BY AGF STUDIO



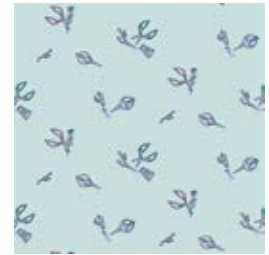
FWR-34882
FLOWER TIES



FWR-34883
SEED PACKETS



FWR-34886
WILDFLOWER FIELDS



FWR-34889
Freshly Cut

ADDITIONAL BLENDERS FOR THIS PROJECT



DEN-S-2008
CLASSIC DENIM





FINISHED SIZE | 16" x 16"

FABRIC REQUIREMENTS

Fabric A	FWR-34882	$\frac{1}{8}$ yd.
Fabric B	FWR-34883	$\frac{1}{8}$ yd.
Fabric C	FWR-34886	$\frac{1}{2}$ yd.
Fabric D	FWR-34889	$\frac{1}{8}$ yd.
Fabric E	DEN-S-2008	$\frac{1}{8}$ yd.

CUTTING DIRECTIONS

$\frac{1}{4}$ " seam allowances are included.
WOF means width of fabric.

- Four (4) $2\frac{1}{2}$ " squares from fabric **A**.
- Six (6) $2\frac{7}{8}$ " squares from fabric **A**.
- Eight (8) $2\frac{7}{8}$ " squares from fabric **B**.
- Four (4) $2\frac{1}{2}$ " squares from fabric **C**.
- Ten (10) $2\frac{7}{8}$ " squares from fabric **C**.
- Two (2) $16\frac{1}{2}$ " x 13" rectangles from fabric **C**.
- Eight (8) $2\frac{1}{2}$ " squares from fabric **D**.
- Eight (8) $2\frac{7}{8}$ " squares from fabric **D**.
- Four (4) $2\frac{1}{2}$ " squares from fabric **E**.
- Twelve (12) $2\frac{7}{8}$ " squares from fabric **E**.

CONSTRUCTION

Sew all rights sides together with $\frac{1}{4}$ " seam allowance.

- For this pillow we are going to use the half square triangle technique (HST).
- Take two (2) $2\frac{7}{8}$ " squares from fabrics **A** and **B**.
- 1) Align one square from fabric **A** to one square from fabric **B**. Place them face to face making sure **A** is on top and the stripes are vertical.
- 2) Draw a diagonal line from the top left corner to the bottom right corner on the back of fabric **A**. Stitch at $\frac{1}{4}$ " of either side of the drawn line.
- 3) Cut following the drawn line.
- 4) Press open the resulting pieces.
- For fabric placement and attachment follow diagram 1.

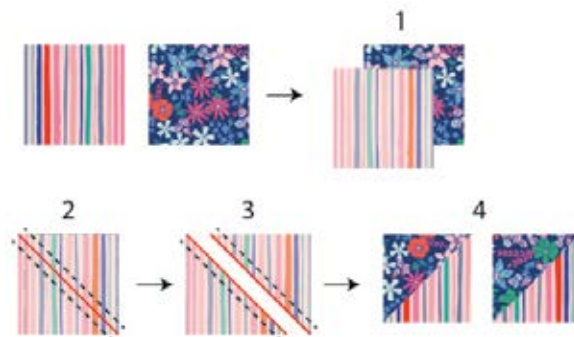
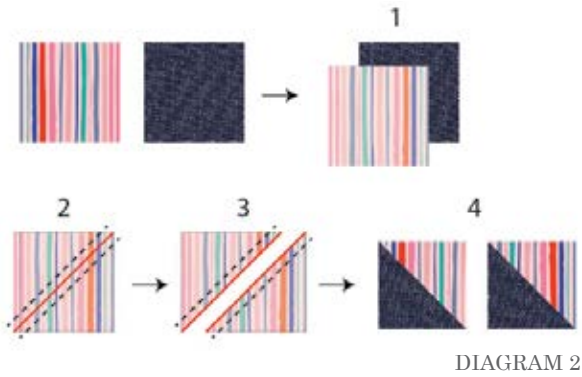
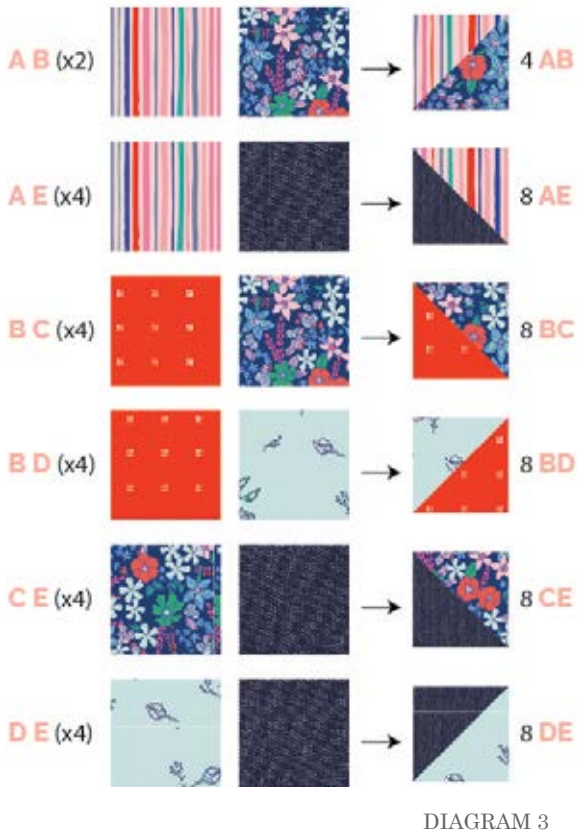


DIAGRAM 1

- Take four (4) $2\frac{7}{8}$ " squares from fabrics **A** and **E**.
- 1) Align one square from fabric **A** to one square from fabric **E**. Place them face to face making sure **A** is on top and the stripes are vertical.
- 2) Draw a diagonal line from the top right corner to the bottom left corner on the back of fabric **A**. Stitch at $\frac{1}{4}$ " of either side of the drawn line.
- 3) Cut following the drawn line.
- 4) Press open the resulting pieces.
- For fabric placement and attachment follow diagram 2.



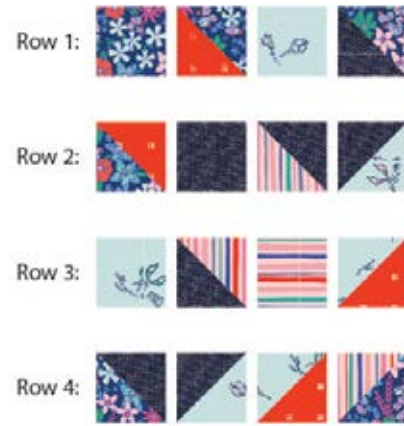
- Take all the 2 $\frac{7}{8}$ " squares and pair them following diagram 3 to get HST.
- You will have **AB** and **AE** ready from diagram 1 and diagram 2.



- Take all the HST and the 2 $\frac{1}{2}$ " squares from all the fabrics.

Block 1

- You will be making Block 1 four times.
- Block 1 is composed by four rows:
- Row 1: **C - BC - D - CE**
- Row 2: **BC - E - AE - DE**
- Row 3: **D - AE - A (horizontal lines) - BD**
- Row 4: **CE - DE - BD - AC**



PILLOW TOP

- Join the four resulting blocks following diagram 5.

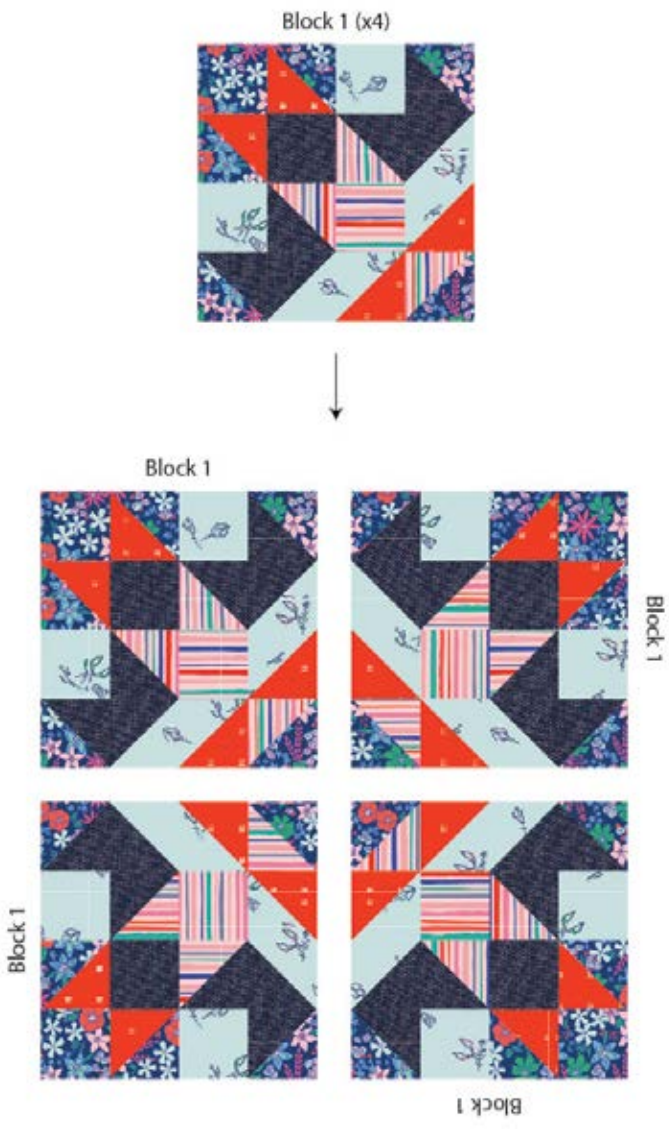


DIAGRAM 5

BACK OF THE PILLOW

Sew rights sides together.

- Take both 16 1/2" x 13" rectangles from fabric C.
- Fold one 13" edge 1/2" towards the wrong side of the fabric of each rectangle.
- Fold the same edge 1/2" again and edge stitch the fold in place to have a clean edge.
- Take the quilted pillow top and lay it flat right side up.
- Take one rectangle from fabric C and align it wrong side up to the right side of the pillow top.
- Take the other rectangle from fabric C and align it wrong side up to the left side of the pillow top.
- Pin the three pieces in place and sew around the edges at 1/4".
- Clip the corners and flip the piece to the right side of the fabric.
- Fill the pillow with a 16" x 16" pillow form and enjoy!

XXXXXXXXXXXXXXXXXXXXXXXXXXXXXXXX

Congratulations & enjoy

XXXXXXXXXXXXXXXXXXXXXXXXXXXXXXXX



artgalleryfabrics.com

NOTE: While all possible care has been taken to ensure the accuracy of this pattern, We are not responsible for printing errors or the way in which individual work varies.

Please read instructions carefully before starting the construction of this quilt. If desired, wash and iron your fabrics before starting to cut.

© 2020 Courtesy of Art Gallery Quilts LLC. All Rights Reserved.