

XXXXXX



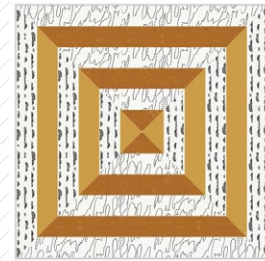
capsules  
by AGF

XXXXXXXXXXXXXXXXXXXXXXXXXXXX

XXXXXXXXXXXXXXXXXXXX



# Quilla



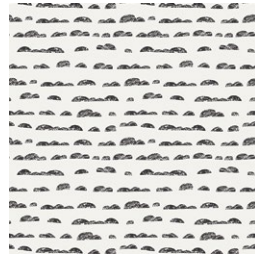
DESIGNED BY AGFstudio



FABRICS DESIGNED BY AGF STUDIO



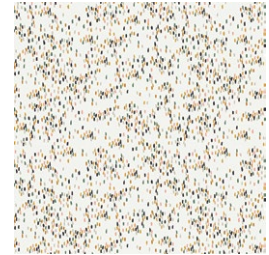
CAP-PA-1407  
INCA TRAIL



CAP-PA-1411  
ON THE HORIZON



CAP-PA-1409  
PRICKLY STROLL



CAP-PA-1410  
SAND ESCAPE

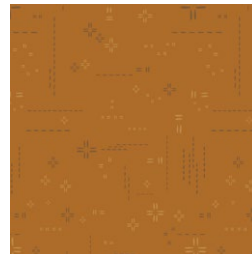
## ADDITIONAL BLENDERS FOR THIS PROJECT



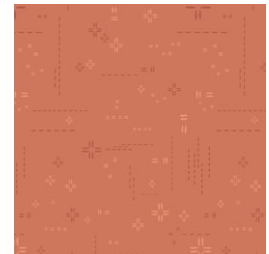
PE-421  
HONEY



PE-450  
GRAPEFRUIT



DSE-714  
PECAN PRALINE



DES-713  
RED DESERT





FINISHED SIZE | 18" x 18"

## FABRIC REQUIREMENTS

### Pillow 1

Fabric <b>A</b>	CAP-PA-1407	$\frac{1}{4}$ yd.
Fabric <b>B</b>	CAP-PA-1411	$\frac{2}{3}$ yd.
Fabric <b>C</b>	DSE-714	$\frac{1}{4}$ yd.
Fabric <b>D</b>	PE-421	$\frac{1}{4}$ yd.

### Pillow 2

Fabric <b>A</b>	CAP-PA-1407	$\frac{1}{4}$ yd.
Fabric <b>B</b>	CAP-PA-1410	$\frac{2}{3}$ yd.
Fabric <b>C</b>	DSE-713	$\frac{1}{4}$ yd.
Fabric <b>D</b>	PE-450	$\frac{1}{4}$ yd.

### BACKING FABRIC

#### Pillow 1:

Fabric **B**- CAP-PA-1411 *(Included)*

#### Pillow 2:

Fabric **B**- CAP-PA-1410 *(Included)*

## CUTTING DIRECTIONS

$\frac{1}{4}$ " seam allowances are included.  
WOF means width of fabric.

- Three (3) 2" x WOF strips from fabrics **A-D**

## CONSTRUCTION

Sew all rights sides together with  $\frac{1}{4}$ " seam allowance.

- Take three 2" x wof strips from fabric **A** and **C** and join them in the following order:

**A-C-A-C-A-C.**

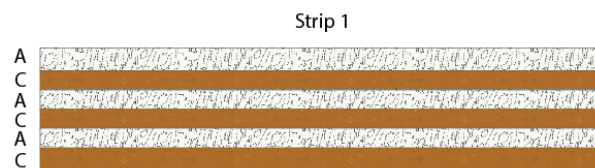


DIAGRAM 1

- Take three 2" x wof strips from fabric **B** and **D** and join them in the following order:

**B-D-B-D-B-D**

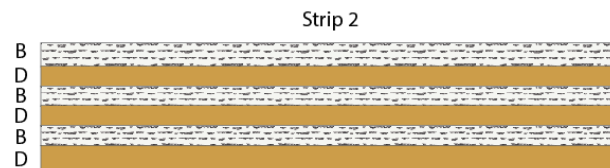


DIAGRAM 2

- Take the template and place it on top of strip 1.
- Trace and cut two triangle pieces.
- Repeat the same for strip 2.

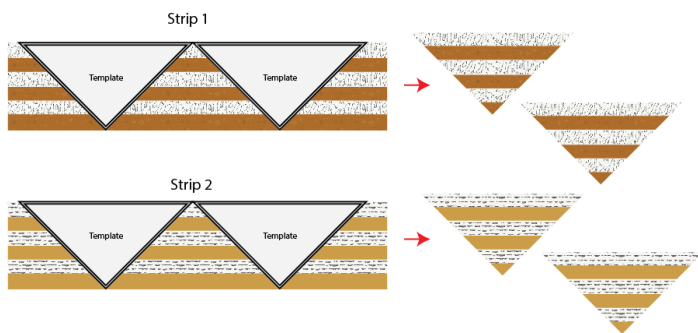


DIAGRAM 3

- Now, take one piece of strip 1 and 2 and join them following the diagram below.

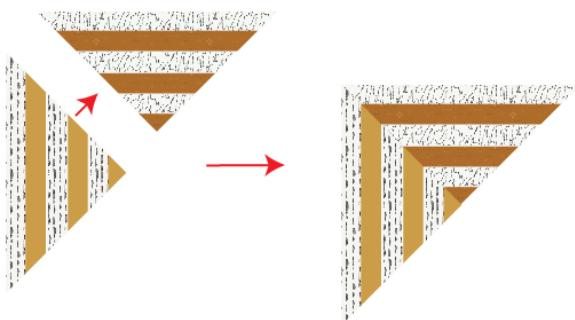


DIAGRAM 4

- Repeat the same construction but this time, rotate your pieces, following the diagram below.

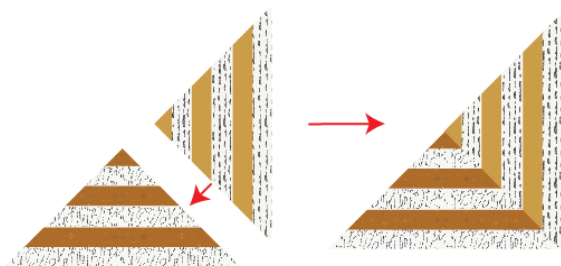


DIAGRAM 5

- Join both pieces to create your pillow cover top.
- Your pillow should measure 18½" x 18½".

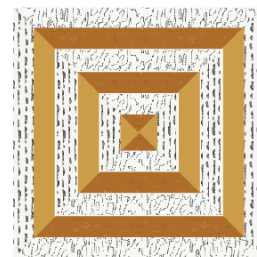


DIAGRAM 6

- Repeat the same construction for the pillow 2.

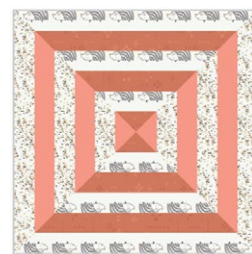


DIAGRAM 7

## CREATING THE BACK PILLOW

*Sew all rights sides together with ¼" seam allowance. Press open.*

- To make a envelope back for your pillow take both 18½" x 14" rectangles from fabric **B** and fold one 14" side on each rectangle in ½" and press.
- Then fold it another ½" and press.
- Top stitch as close to the edge as possible.
- Place rectangles right side together on top of each other to the front of your pillow and stitch all the way around your pillow at ¼" seam allowance.
- Clip corners at seam allowance and flip piece to the right side of the fabric.
- Fill pillow with a 18" x 18" pillow form and enjoy!

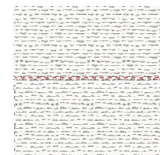
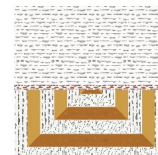
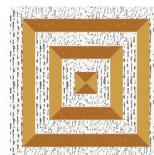


DIAGRAM 8

XXXXXXXXXXXXXXXXXXXXXXXXXXXXXXXXXXXX

*Congratulations  
& enjoy*

XXXXXXXXXXXXXXXXXXXXXXXXXXXXXXXXXXXX



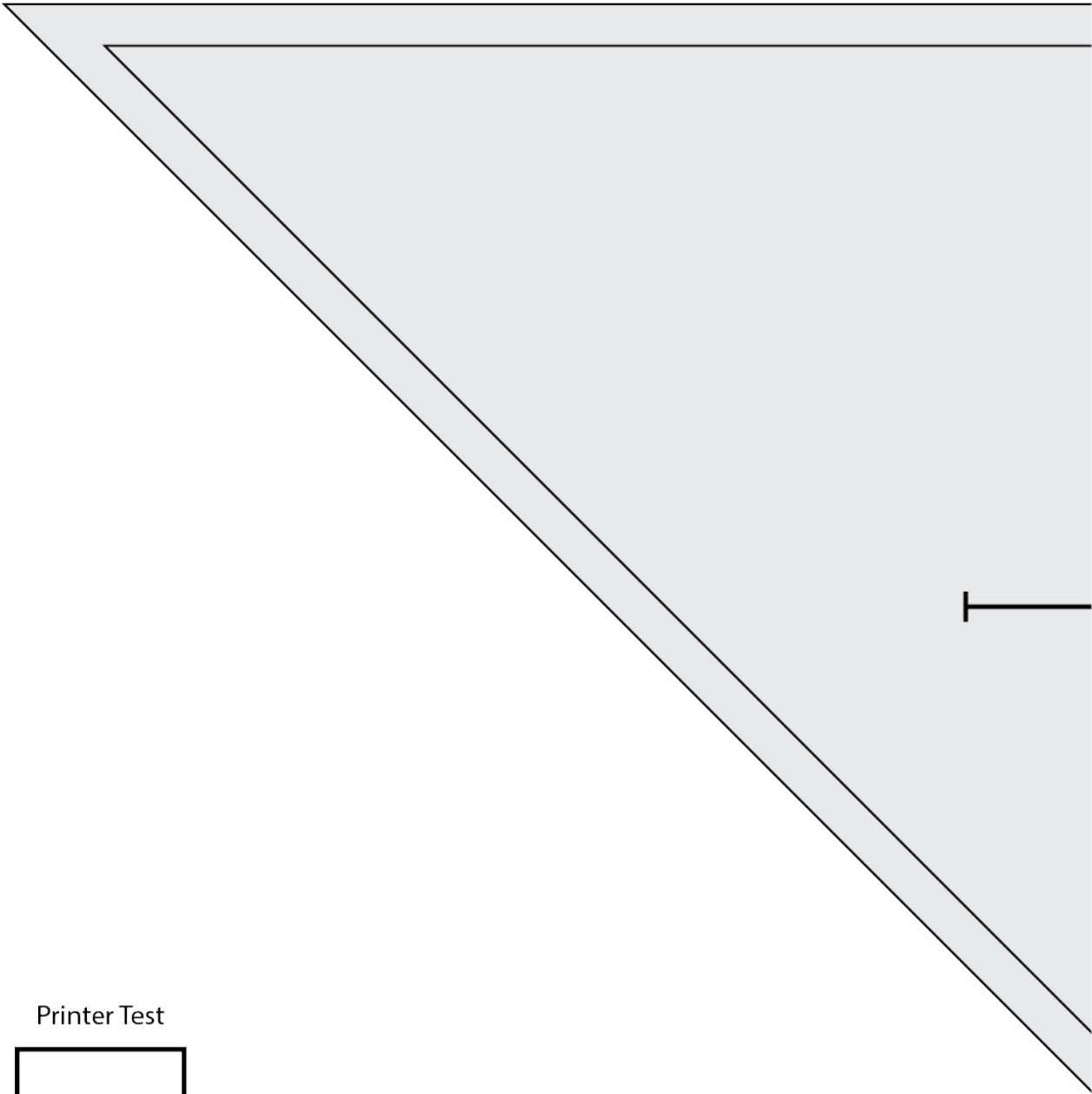
[artgalleryfabrics.com](http://artgalleryfabrics.com)

NOTE: While all possible care has been taken to ensure the accuracy of this pattern, We are not responsible for printing errors or the way in which individual work varies.

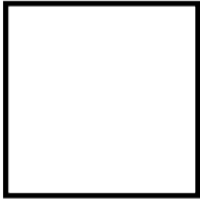
Please read instructions carefully before starting the construction of this quilt. If desired, wash and iron your fabrics before starting to cut.

© 2020 Courtesy of Art Gallery Quilts LLC. All Rights Reserved.

TEMPLATE



Printer Test



1" square



# Template



