

A square quilted pillow with a central geometric patchwork design. The patchwork features triangles in pink, blue, and orange, set against a white background. The pillow is bordered by wide white and orange stripes. It is shown on a white surface with a small pink toy figure in the background.

by AGF

XXXXXXXXXXXXXXXXXXXXXXXXXXXX

Nap-T

QUILT DESIGNED BY AGFstudio



ART DISTRICT FUSION

FABRICS DESIGNED BY AGF STUDIO



FUS-AD-1602
ROSES & LETTERS DISTRICT



FUS-AD-1600
CAT NAP DISTRICT



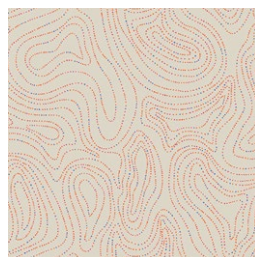
FUS-AD-1606
CITY SOUNDS DISTRICT



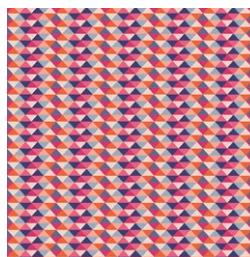
FUS-AD-1604
ASPHODEL DISTRICT



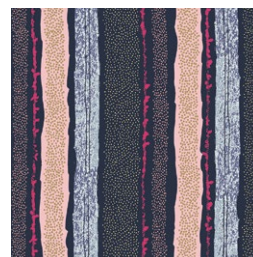
FUS-AD-1609
I SCREAM, YOU SCREAM DISTRICT



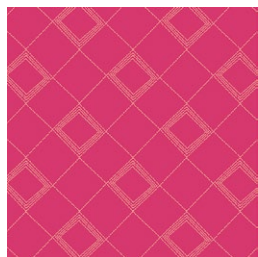
FUS-AD-1601
WAVES OF ECHO DISTRICT



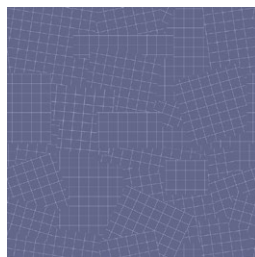
FUS-AD-1607
TRIPIXELS DISTRICT



FUS-AD-1605
STRAWS OF DISTRICT



FUS-AD-1603
TARTAN DISTRICT



FUS-AD-1608
PHONOGRAPHIC GRIDS DISTRICT



Nap-T

FINISHED SIZE | 16" x 16"

FABRIC REQUIREMENTS

Fabric A	FUS-AD-1606	1/3 yd.
Fabric B	FUS-AD-1603	1/8 yd.
Fabric C	FUS-AD-1609	3/4 yd.
Fabric D	FUS-AD-1608	1/8 yd.
Fabric E	FUS-AD-1605	1/8 yd.
Fabric F	FUS-AD-1601	1/8 yd.
Fabric G	PE-404	1/8 yd.
Fabric H	PE-461	1/8 yd.
Fabric I	PE-436	1/3 yd.

BACKING FABRIC

FUS-AD-1609 Fabric **A** 1/2 yds
(Included).

CUTTING DIRECTIONS

1/4" seam allowances are included.
WOF means width of fabric.

Fabric **A**

- Cut one (1) stripe of 16 1/2 x 1.
- Cut two (2) rectangle of 16 1/2 x 13 1/2. (Backing)
- Cut one (1) rectangle of 4 1/2 x 2 1/2.
- Cut one (1) square of 2 7/8 x 2 7/8.

Fabric **B**

- Cut one (1) rectangle of 4 1/2 x 2 1/2.
- Cut one (1) square of 2 7/8 x 2 7/8.
- Cut one (1) stripe of 16 1/2 x 1.

Fabric **C**

- Cut one (1) rectangle of 4 1/2 x 2 1/2.
- Cut one (1) square of 2 7/8 x 2 7/8.

Fabric **D**

- Cut one (1) square of 2 7/8 x 2 7/8.

Fabric **E**

- Cut one (1) rectangle of 4 1/2 x 2 1/2.
- Cut one (1) square of 2 7/8 x 2 7/8.

Fabric **F**

- Cut one (1) square of 2 7/8 x 2 7/8.

Fabric **G**

- Cut one (1) square of 2 7/8 x 2 7/8.

Fabric **H**

- Cut one (1) stripe of 16 1/2 x 1 1/2.
- Cut one (1) stripe of 16 1/2 x 1.

Fabric **I**

- Cut two (2) stripes of 16 1/2 x 3 1/2.
- Cut two (2) stripes of 16 1/2 x 2 1/2.
- Cut eight (8) Squares of 2 1/2 x 2 1/2.
- Cut eight (8) Squares of 2 7/8 x 2 7/8.

CONSTRUCTION

Sew all rights sides together with 1/4" seam allowance.

For this pillow we will use two different methods, the Flying Geese and HST (Half Square Triangle)

Flying Geese

- Take the 4 1/2 x 2 1/2 rectangles from fabric **A, B, C, E**,
- Four (4) 2 1/2 x 2 1/2 squares from fabric **I**, and follow flying geese method. See diagram below.

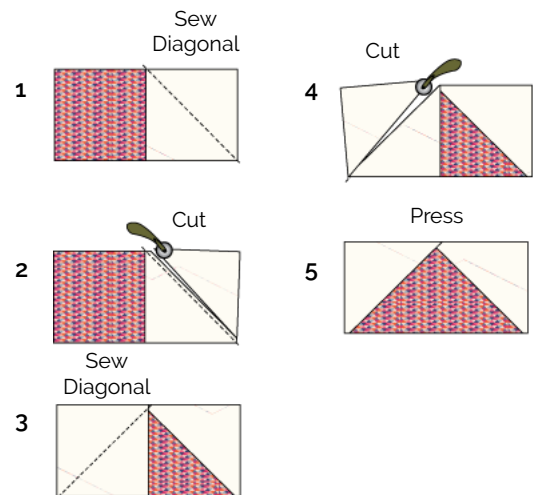
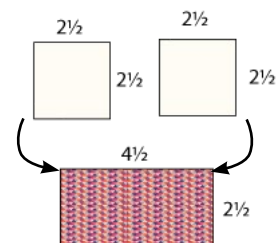


DIAGRAM 1

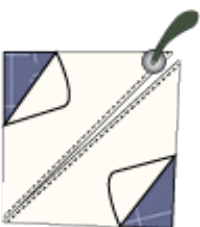
HST Method:



Place the two squares right side together and mark a diagonal line on the wrong side of each square



Sew a 1/4 on both sides of the marked diagonal line



Using a rotary blade cut the square into two triangles

DIAGRAM 2

We will need one (1) of each combination of flying geese and HST. See Diagram below.

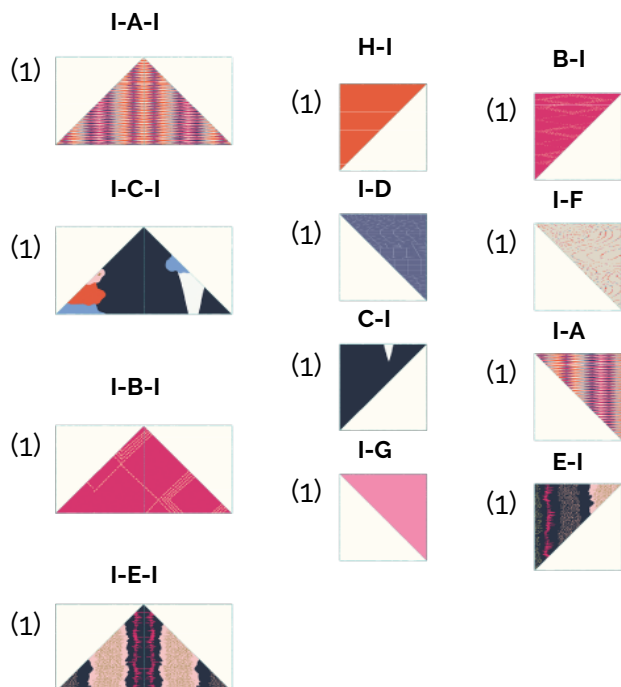


DIAGRAM 3

- Sew all the HST together in the order shown on diagram 4
- Sew all the flying geese in the order shown on diagram 4

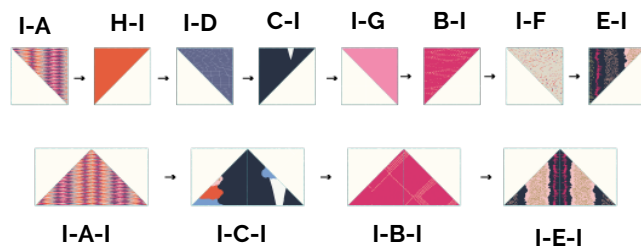


DIAGRAM 4

- Now sew the two rows together

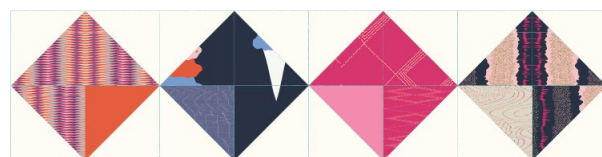
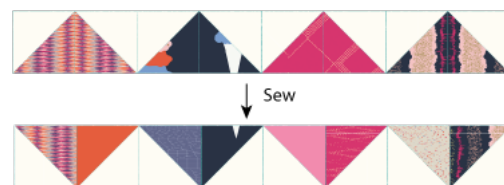


DIAGRAM 5

- For fabric placement and arrangement please follow diagram below..
- You will need:
- Two (2) $16\frac{1}{2} \times 3\frac{1}{2}$ strip from fabric **I**.
- Two (2) $16\frac{1}{2} \times 2\frac{1}{2}$ strip from fabric **I**.
- One (1) $16\frac{1}{2} \times 2\frac{1}{2}$ strip from fabric **H**.
- One (1) $16\frac{1}{2} \times 1\frac{1}{2}$ strip from fabric **H**.
- One (1) $16\frac{1}{2} \times 1$ strip from fabric **B**.

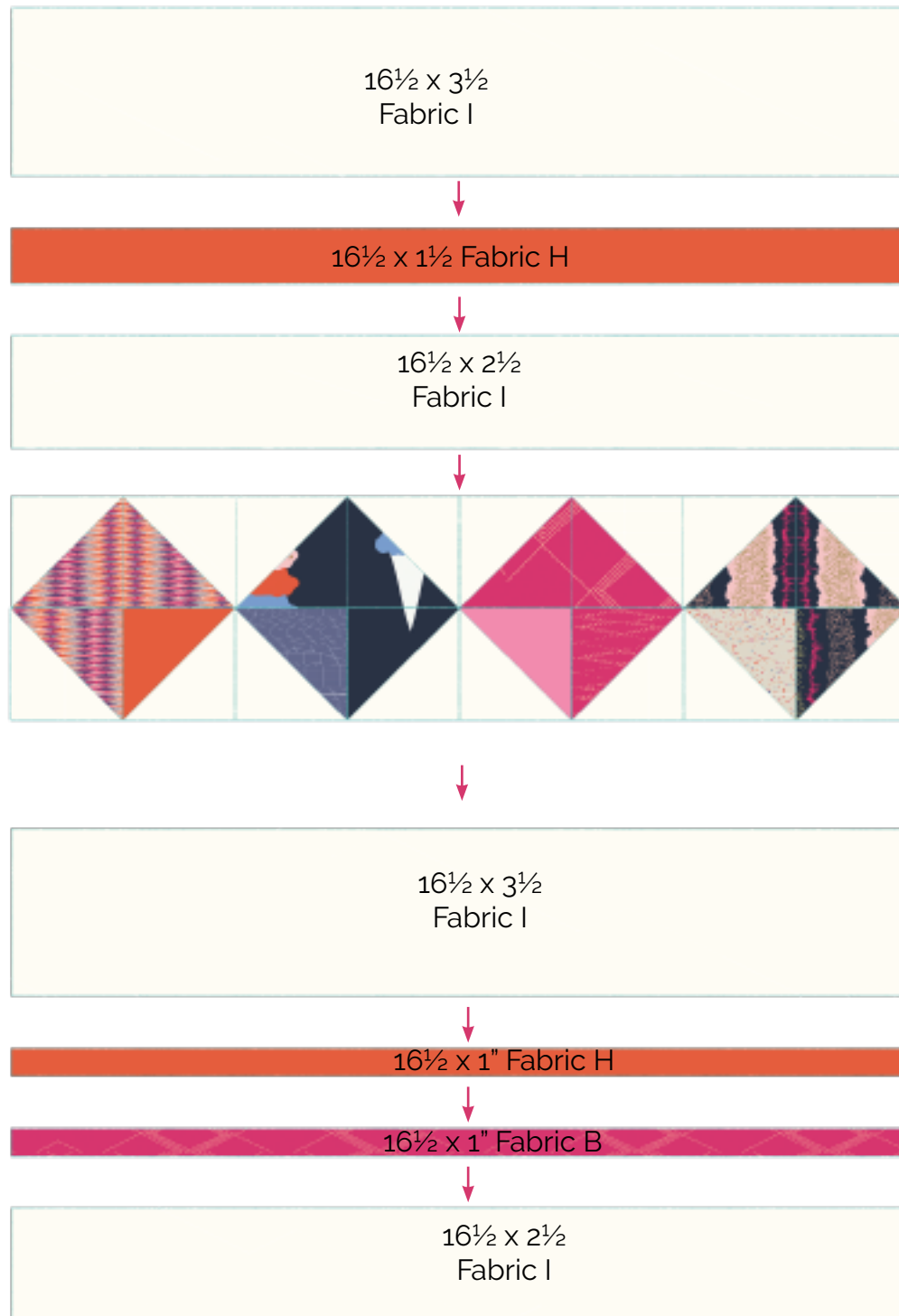


DIAGRAM 6

16"

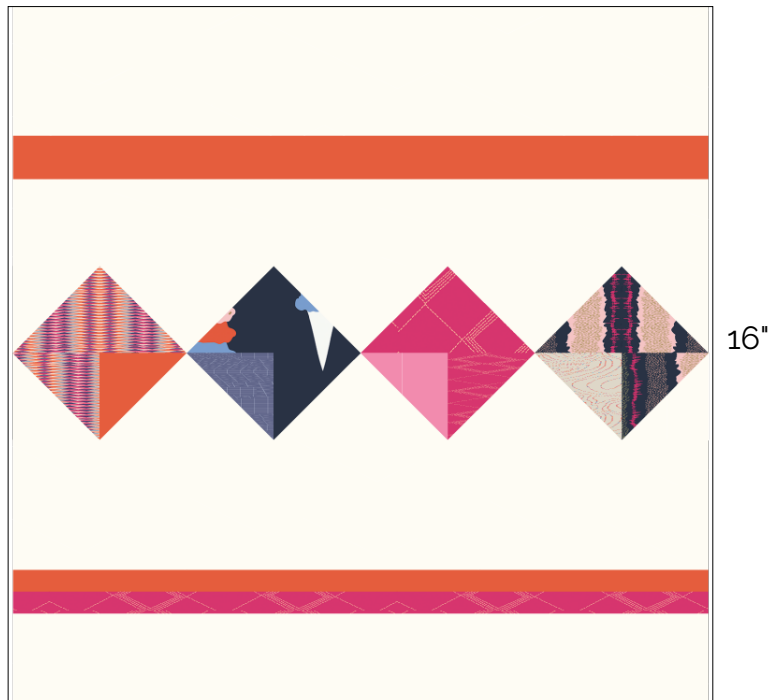


DIAGRAM 7

CREATING THE BACK PILLOW

*Sew all rights sides together with $\frac{1}{4}$ " seam allowance
Press open.*

- Take both $16\frac{1}{2}$ " x $13\frac{1}{2}$ " rectangles from fabric **A**.
- Fold one $13\frac{1}{2}$ " edge $\frac{1}{2}$ " towards the wrong side of the fabric of each rectangle.
- Fold the same edge $\frac{1}{2}$ " again and edge stitch the fold in place to have a clean edge.
- Take the quilted pillow top and lay it flat right side up.
- Take one rectangle from fabric **A** and align it wrong side up to the right side of the pillow top.
- Take the other rectangle from fabric **A** and align it wrong side up to the left side of the pillow top.
- Pin the three pieces in place and sew around the edges at $\frac{1}{4}$ ".
- Clip the corners and flip the piece to the right side of the fabric.
- Fill the pillow with a 16" x 16" pillow form and enjoy!



artgalleryfabrics.com

NOTE: While all possible care has been taken to ensure the accuracy of this pattern, We are not responsible for printing errors or the way in which individual work varies. Please read instructions carefully before starting the construction of this quilt. If desired, wash and iron your fabrics before starting to cut.

© 2018 Courtesy of Art Gallery Quilts LLC. All Rights Reserved.