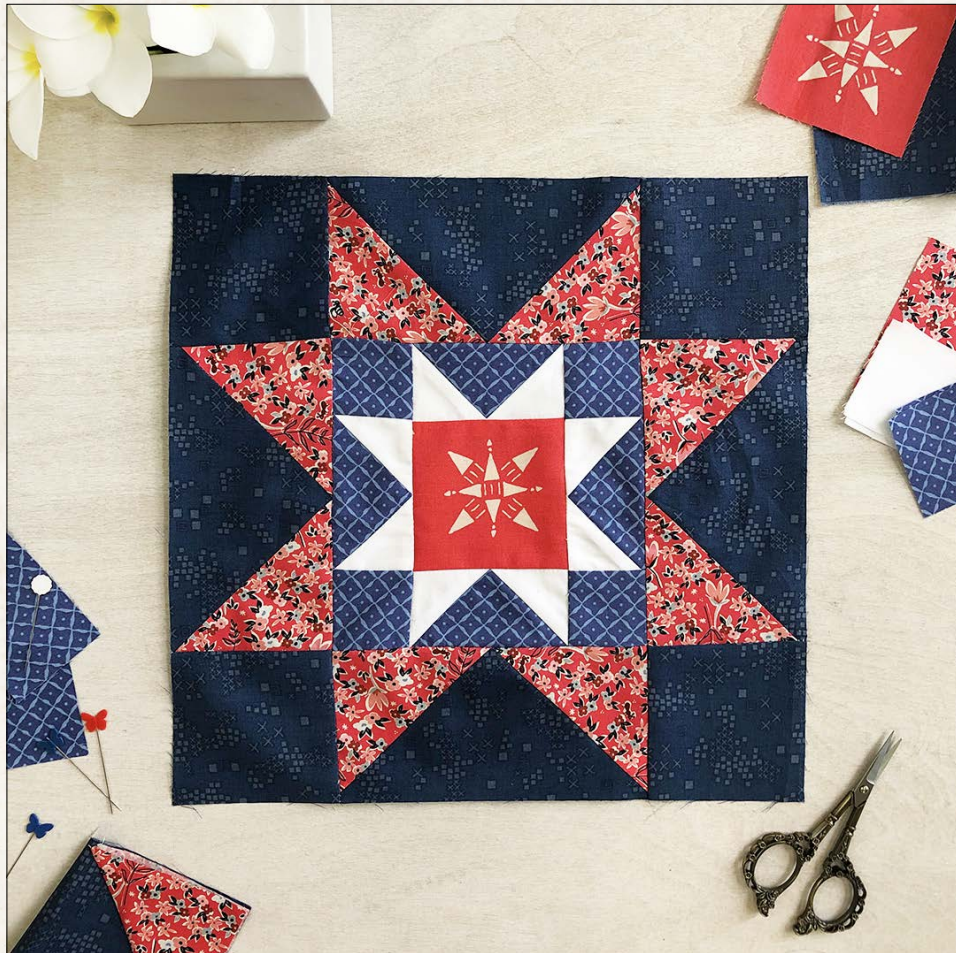


America



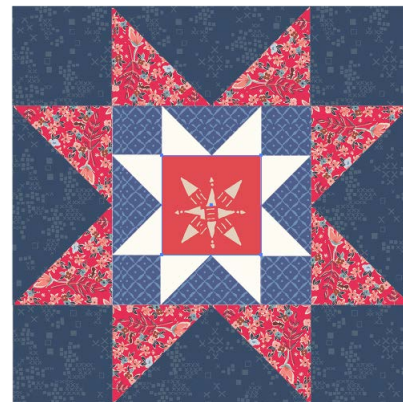
FREE PATTERN

XXXXXXXXXXXXXXXXXXXXXXXXXXXX

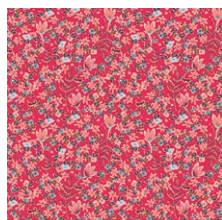


America

BLOCK DESIGNED BY AGF STUDIO



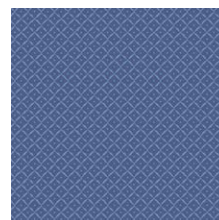
LVS-48808
COMPASSION RUBY



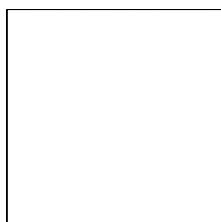
CHA-41705
GARDEN OF
DREAMS ROUGE



TAL-65303
SOFIA MIDNIGHT



INB-36631
CHINOISERIE
KOBALT



PE-433
SNOW



America

FINISHED SIZE | 12" x 12"

FABRIC REQUIREMENTS

Fabric A	LVS-48808	F8
Fabric B	INB-36631	F8
Fabric C	PE-433	F8
Fabric D	CHA-4170	F8
Fabric E	TAL-6530	F8

CUTTING DIRECTIONS

Fabric **A**:

- One (1) $3\frac{1}{2}$ " square.

Fabric **B**:

- Eight (8) 2" squares.
- Four (4) $3\frac{1}{2}$ " x 2" rectangles.

Fabric **C**:

- Four (4) 2" squares.

Fabric **D**:

- Eight (8) $3\frac{1}{2}$ " squares.

Fabric **E**:

- Four (4) $3\frac{1}{2}$ " squares.
- Four (4) $6\frac{1}{2}$ " x $3\frac{1}{2}$ " rectangles.

CONSTRUCTION

- Place (1) 2" square from fabric **C** on the right edge of (1) $3\frac{1}{2}$ " x 2" rectangle of fabric **B**, mark a diagonal line, sew through the line, and trim $\frac{1}{4}$ " away from the stitch.
- Place another 2" square from fabric **C** and place it on the left edge of the sewn piece, mark a diagonal line, sew through the line, and trim $\frac{1}{4}$ " away from the stitch, and press.
- Repeat this step 3 more times.
- You should get a total of (4) $3\frac{1}{2}$ " x 2" **CBC** flying geese combination.

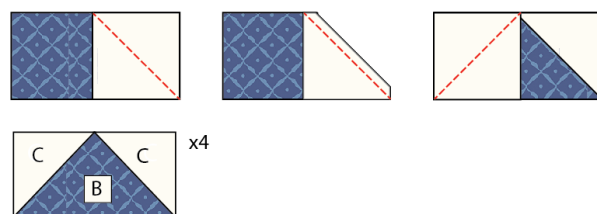


DIAGRAM 1

- Follow the same steps with (8) $3\frac{1}{2}$ " x $3\frac{1}{2}$ " squares from fabric **D** and (4) $6\frac{1}{2}$ " x $3\frac{1}{2}$ " rectangles from fabric **E**.
- You should get a total of (4) $6\frac{1}{2}$ " x $3\frac{1}{2}$ " **DED** flying geese combination



DIAGRAM 1.1

- Join a 2" square from fabric **C** with a **CBC** flying geese combination and another 2" square from fabric **C**. Repeat this step one more time.

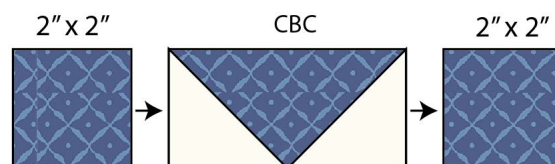


DIAGRAM 2

- Join **CBC** flying geese combination with a 3½" square from fabric **A** and another **CBC** flying geese combination

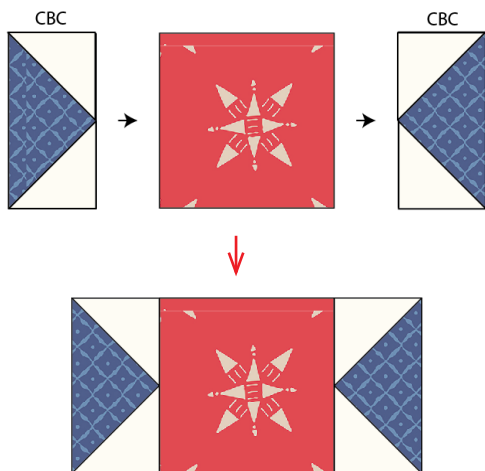


DIAGRAM 3

- To create the center of the block follow diagram below for rows placements.

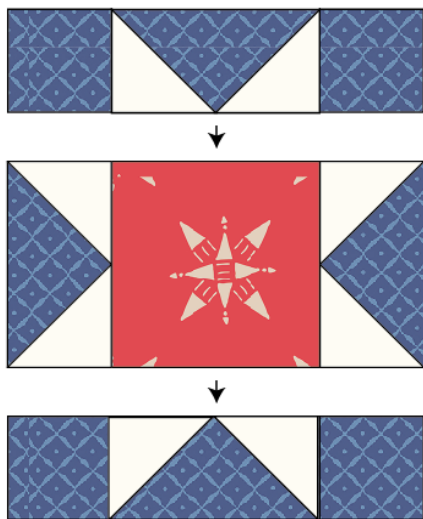


DIAGRAM 4

Center of the block.

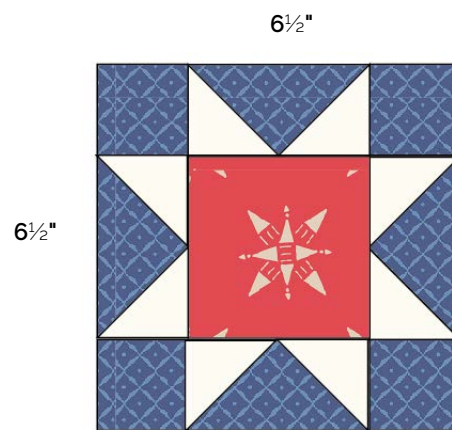


DIAGRAM 5

- Join (1) 3½" square from fabric **E** with a **DED** flying geese combination and (1) 3½" square from fabric **E**.
- Repeat this step one more time.

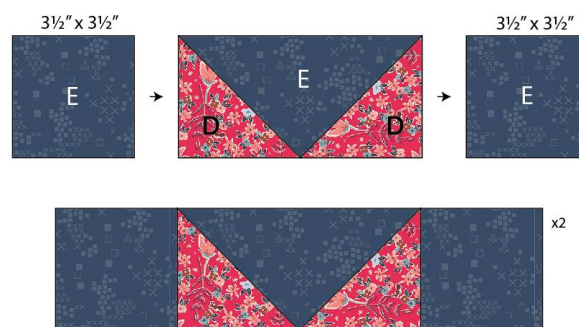


DIAGRAM 6

- Join (1) **DED** flying geese combination with the center of the block and (1) **DED** flying geese combination

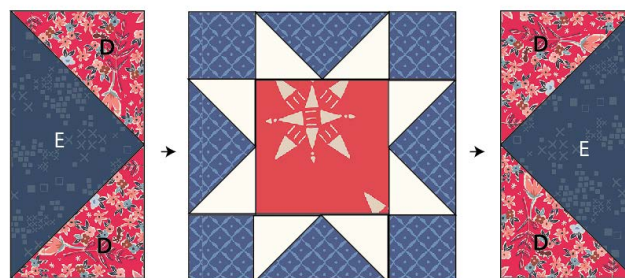


DIAGRAM 7

- For rows placement and arrangements see diagram below.

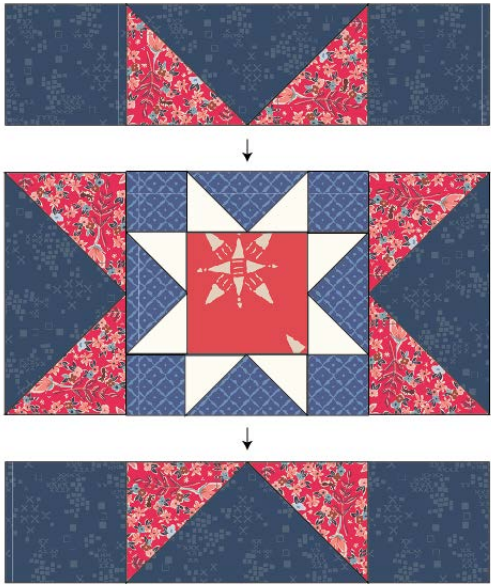


DIAGRAM 8

- Enjoy.

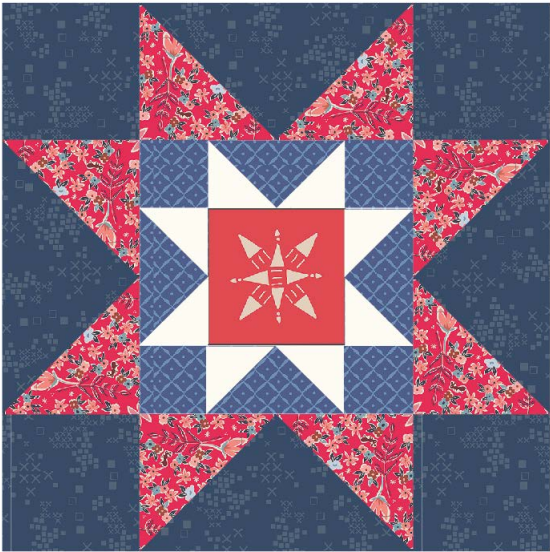


DIAGRAM 9



FEEL THE DIFFERENCE

artgalleryfabrics.com

NOTE: While all possible care has been taken to ensure the accuracy of this pattern, We are not responsible for printing errors or the way in which individual work varies. Please read instructions carefully before starting the construction of this quilt. If desired, wash and iron your fabrics before starting to cut.

© 2020 Courtesy of Art Gallery Quilts LLC. All Rights Reserved.