



Spell On You



Spell On You

DESIGNED BY AGFstudio



Spooky 'n Sweet

FABRICS DESIGNED BY AGF STUDIO

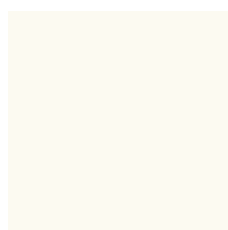


SNS-13013
YOU ARE MAGIC

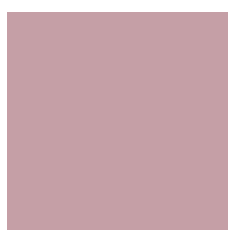


SNS-13006
MAUVEL BATTY OVER YOU
OUS

ADDITIONAL BLENDERS FOR THIS PROJECT



PE-408
WHITE LINEN



PE-425
MAUVELOUS



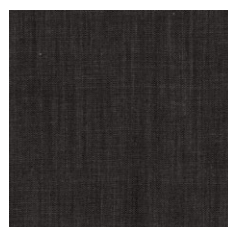
PE-432
SANDSTONE



PE-457
DRIED CARROT



PE-461
TIGERLILY



DEN-S-2000
WHICKED SKY





FINISHED SIZES | 14" x 14", 12" x 11½", 14" x 14", 12" x 12", 15½" x 8", 13½" x 8"

FABRIC REQUIREMENTS

Fabric A	SNS-13013	1yd.
Fabric B	PE-457	⅞yd.
Fabric C	PE-408	F8
Fabric D	SNS-13006	½yd.
Fabric E	PE-432	F8
Fabric F	DEN-S-2000	¼yd.
Fabric G	PE-461	F8
Fabric H	PE-495	FQ

BACKING FABRICS

Panel 1

Fabric **B**- PE-457 (Included)

Panel 2

Fabric **B**- PE-457 (Included)

Panel 3

Fabric **D**- SNS-13006 (Included)

Panel 4

Fabric **B**- PE-457 (Included)

Panel 5

Fabric **F**- DEN-S-2000 (Included)

Panel 6

Fabric **H**- PE-457 (Included)

CUTTING DIRECTIONS

¼" seam allowances are included.
WOF means width of fabric.

Panel 1:

- One (1) 14" x 14" square from fabric **A**
- Two (2) 14" x 12" rectangles from fabric **B** (backing)

Panel 2:

- One (1) template 1 from fabric **A**
- One (1) template 1 from fabric **B** (backing)

Panel 3:

- One (1) 9½" square from fabric **A**
- Two (2) 1⅞" squares from fabric **A**
- Two (2) 4" squares from fabric **A**
- Two (2) 4" squares from fabric **C**
- Two (2) 1⅞" squares from fabric **C**
- Two (2) 11½" x 2" rectangles from fabric **D**
- Two (2) 2" x 14½" rectangles from fabric **D**
- Two (2) 12" x 14½" rectangles from fabric **D** (backing)

Panel 4:

- One (1) 9½" square from fabric **A**
- Four (4) 10½" x 1½" strips from fabric **B**
- Two (2) 12½" x 10½" rectangles from fabric **B** (backing)
- Two (2) 9½" x 1" strips from fabric **H**
- Two (2) 1" x 10½" strips from fabric **H**

Panel 5:

- One (1) 10½" x 8½" rectangle from fabric **A**
- Two (2) 1" x 8½" strips from fabric **E**
- Two (2) 2½" x 8½" rectangles from fabric **F**
- Two (2) ¾" x 8½" strips from fabric **G**
- Two (2) 13" x 8½" rectangles from fabric **F** (backing)

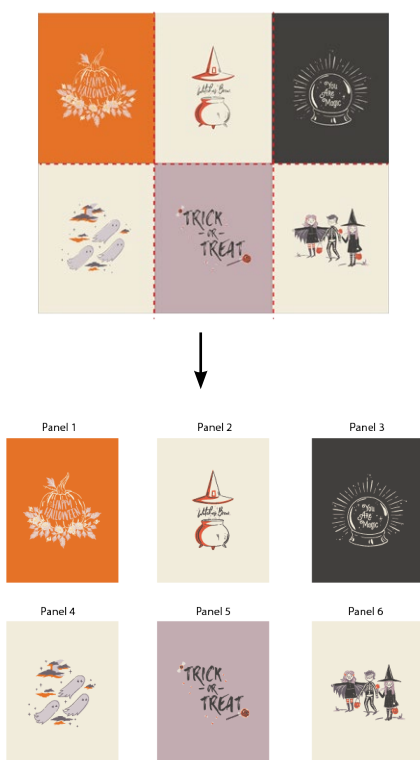
Panel 6:

- One (1) 14" x 8½" rectangle from fabric **A**
- Two (2) 11" x 8½" rectangles from fabric **H** (backing)
- One (1) 2" x 50" strip from fabric **F** (piping)

CONSTRUCTION

Sew all rights sides together with ¼" seam allowance.

- Take fabric **A** and cut it into (6) 14" x 18" panels, which we will call panel 1, 2, 3, 4, 5, 6. See diagram below for reference.



- For Panel 3, follow the diagram below for the cutting directions.



Panel 1:

- Take fabric **A** 14" perfect square and quilt as desired.



DIAGRAM 1

CREATING THE BACK PILLOW

Sew all rights sides together with ¼" seam allowance. Press open.

- Take both 14" x 12" rectangles from fabric **B**.
- Fold one 12" edge ½" towards the wrong side of the fabric of each rectangle.
- Fold the same edge ½" again and edge stitch the fold in place to have a clean edge.
- Take the quilted pillow top and lay it flat right side up.
- Take one rectangle from fabric **B** and align it wrong side up to the right side of the pillow top.
- Take the other rectangle from fabric **B** and align it wrong side up to the left side of the pillow top.
- Pin the three pieces in place and sew around the edges at ¼".
- Clip the corners and flip the piece to the right side of the fabric.
- Fill the pillow with a 13½" x 13½" pillow form and enjoy!

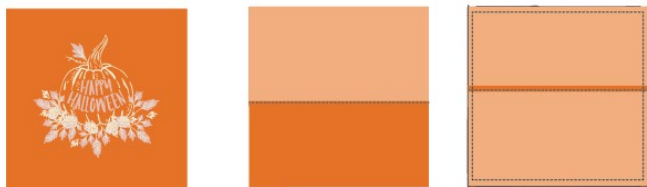


DIAGRAM 2

Panel 2:

- Take fabric **A** and quilt as desired.
- Then, take template 1 and trace it the template on the panel with a water soluble pen and cut.
- Place the backing from fabric **B** and the pillow top, right sides facing and sew around the edges, leaving about 3" of opening.
- Turn piece inside out.
- Insert pillow stuffing and handstitch or machine stitch the opening.

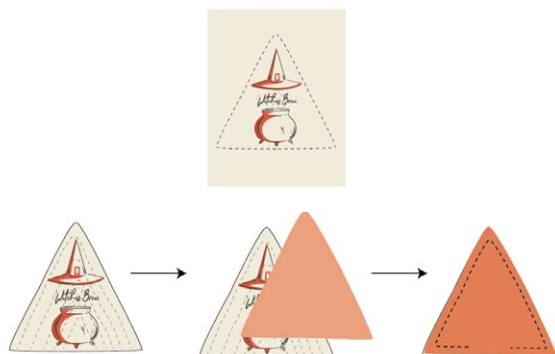


DIAGRAM 3

Panel 3:

Magic 8 technique:

- Take fabric **A** and fabric **C** 4" squares and place them right sides facing.
- Draw diagonal line from corner to corner using a mechanical pencil or Frixion pen.



DIAGRAM 4

- Stitch $\frac{1}{4}$ " on each side of the drawn lines.

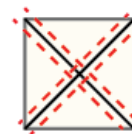


DIAGRAM 5

- Cut the squares in both directions.

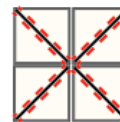


DIAGRAM 6

- Cut the squares diagonally corner to corner.
- Trim excess fabric. Your eight (8) HST should measure $1\frac{1}{2}$ " x $1\frac{1}{2}$ ".

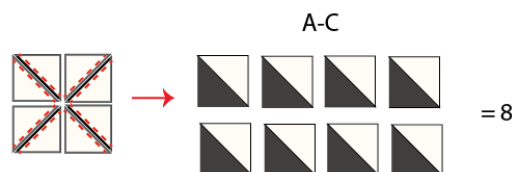


DIAGRAM 7

- Repeat the same instruction by taking (1) 4" **A** and (1) **C** squares.

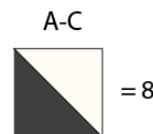


DIAGRAM 8

HST construction

- Draw a diagonal line from corner to corner using a mechanical pencil or Frixion pen.
- Stitch $\frac{1}{4}$ " on each side of the drawn lines.
- Cut the pieces apart along the marked diagonal line.
- Press and trim to a $1\frac{1}{2}$ " squares.

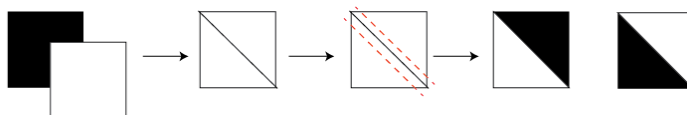


DIAGRAM 9

- Create a total of four HST's for the following fabric combination.

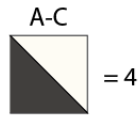


DIAGRAM 10

- You will have a total of 20 **A-C** hst's.

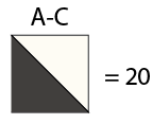


DIAGRAM 11

- Now, join (g) **A-C** hst's following the diagram below.



DIAGRAM 12

- Now, join (g) **A-C** hst's following the diagram below.



DIAGRAM 13

- Now, join (11) **A-C** hst's following the diagram below.



DIAGRAM 14

- Now, join (11) **A-C** hst's following the diagram below.



DIAGRAM 15

- Now, take (1) strip of nine **A-C** and join it on the top of fabric **A** unit.
- Then, join another nine **A-C** strip on the bottom.
- Join (1) eleven **A-C** strip on the left side and the last eleven **A-C** strip on the right side.



DIAGRAM 16

- Join (1) $11\frac{1}{2}$ " x 2" rectangle from fabric **D** on the top part of the assembled unit.
- Join (1) $11\frac{1}{2}$ " x 2" rectangle from fabric **D** on the bottom of the unit.
- Now, join (1) 2" x $14\frac{1}{2}$ " rectangle from fabric **D** on the left side and (1) 2" x $14\frac{1}{2}$ " rectangle from fabric **D** on the right side.



DIAGRAM 17

CREATING THE BACK PILLOW

Sew all rights sides together with $\frac{1}{4}$ " seam allowance. Press open.

- Take both $14\frac{1}{2}$ " x 12" rectangles from fabric **D**.
- Fold one 12" edge $\frac{1}{2}$ " towards the wrong side of the fabric of each rectangle.
- Fold the same edge $\frac{1}{2}$ " again and edge stitch the fold in place to have a clean edge.
- Take the quilted pillow top and lay it flat right side up.
- Take one rectangle from fabric **D** and align it wrong side up to the right side of the pillow top.
- Take the other rectangle from fabric **D** and align it wrong side up to the left side of the pillow top.
- Pin the three pieces in place and sew around the edges at $\frac{1}{4}$ ".
- Clip the corners and flip the piece to the right side of the fabric.
- Fill the pillow with a 14" x 14" pillow form and enjoy!



DIAGRAM 18

Panel 4:

- Join (1) $9\frac{1}{2}$ " x 1" strip from fabric **I** on the top and bottom of (1) $9\frac{1}{2}$ " square from fabric **A**.
- Then, join (1) 1" x $10\frac{1}{2}$ " strip from fabric **I** on each side of fabric **A**.
- Join (1) $10\frac{1}{2}$ " x $1\frac{1}{2}$ " strip from fabric **B** on the top and bottom.
- Then, join (1) $1\frac{1}{2}$ " x $12\frac{1}{2}$ " strip from fabric **B** on each side.
- Trim to $12\frac{1}{2}$ " x $12\frac{1}{2}$ ". Quilt as desired.

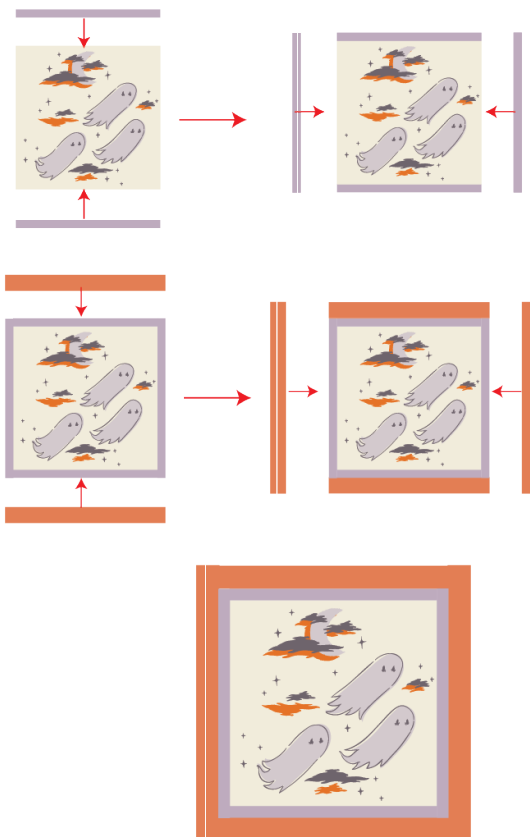


DIAGRAM 19

CREATING THE BACK PILLOW

Sew all rights sides together with $\frac{1}{4}$ " seam allowance. Press open.

- Take both $12\frac{1}{2}$ " x 10" rectangles from fabric **B**.
- Fold one 10" edge $\frac{1}{2}$ " towards the wrong side of the fabric of each rectangle.
- Fold the same edge $\frac{1}{2}$ " again and edge stitch the fold in place to have a clean edge.
- Take the quilted pillow top and lay it flat right side up.
- Take one rectangle from fabric **B** and align it wrong side up to the right side of the pillow top.
- Take the other rectangle from fabric **B** and align it wrong side up to the left side of the pillow top.
- Pin the three pieces in place and sew around the edges at $\frac{1}{4}$ ".
- Clip the corners and flip the piece to the right side of the fabric.
- Fill the pillow with a 12" x 12" pillow form and enjoy!



DIAGRAM 20

Panel 5:

- Join (1) $\frac{3}{4}$ " x $8\frac{1}{2}$ " strip from fabric **G** on each side of (1) $10\frac{1}{2}$ " x $8\frac{1}{2}$ " rectangle from fabric **A**.



DIAGRAM 21

- Now, join (1) 1" x $8\frac{1}{2}$ " rectangle from fabric **E** on each side of the unit.



DIAGRAM 22

- Now, join (1) $2\frac{1}{2}$ " x $8\frac{1}{2}$ " rectangle from fabric **F** on each side of the unit.

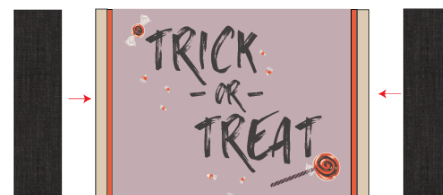


DIAGRAM 23

- Trim to 16" x $8\frac{1}{2}$ " rectangle.
- Quilt as desired.

CREATING THE BACK PILLOW

Sew all rights sides together with ¼" seam allowance. Press open.

- Take both 12" x 8½" rectangles from fabric **F**.
- Fold one 12" edge ½" towards the wrong side of the fabric of each rectangle.
- Fold the same edge ½" again and edge stitch the fold in place to have a clean edge.
- Take the quilted pillow top and lay it flat right side up.
- Take one rectangle from fabric **F** and align it wrong side up to the right side of the pillow top.
- Take the other rectangle from fabric **F** and align it wrong side up to the left side of the pillow top.
- Pin the three pieces in place and sew around the edges at ¼".
- Clip the corners and flip the piece to the right side of the fabric.
- Fill the pillow with a 15½" x 8" pillow form and enjoy!

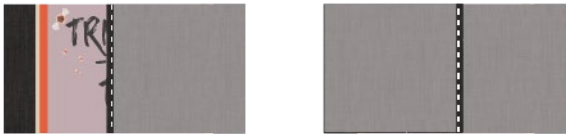


DIAGRAM 24

Panel 6:

- Take (1) 14" x 8½" rectangle from fabric **A** and quilt as desired.

Creating the Piping:

Insert, Align & Stitch:

1. Insert the cording inside the bias tape from fabric **F**.
2. Align the folded bias tape face to face with the edge of the square of fabric.

Sew them together using a zipper foot and starting 2" from the edge of the bias tape.

3. Before getting to the end of the square, clip the outside edges of the bias tape to ease the curve.

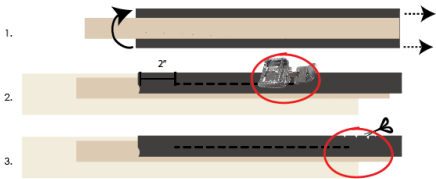


DIAGRAM 25

Meeting Point:

4. After sewing all the curves and going around the square, stop 4" before the starting stitch, and align the cording to get them ready to be cut.
5. Make sure the tips of the cording are flush.
6. Place the bias tape on the left around the cord. Fold towards the inside of the edge of the bias tape to the right to hide the raw edge.

Cover the cording and the bias tape of the left with the bias tape of the right.

Finish the stitch.

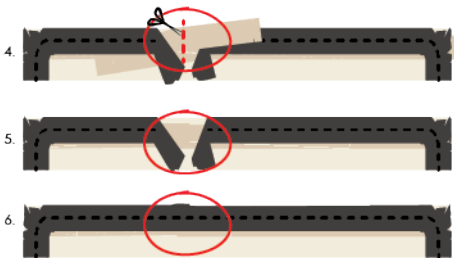


DIAGRAM 26

XXXXXXXXXXXXXXXXXXXXXXXXXXXXXXXXXXXX

*Congratulations
& enjoy*

XXXXXXXXXXXXXXXXXXXXXXXXXXXXXXXXXXXX

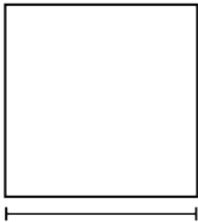


artgalleryfabrics.com

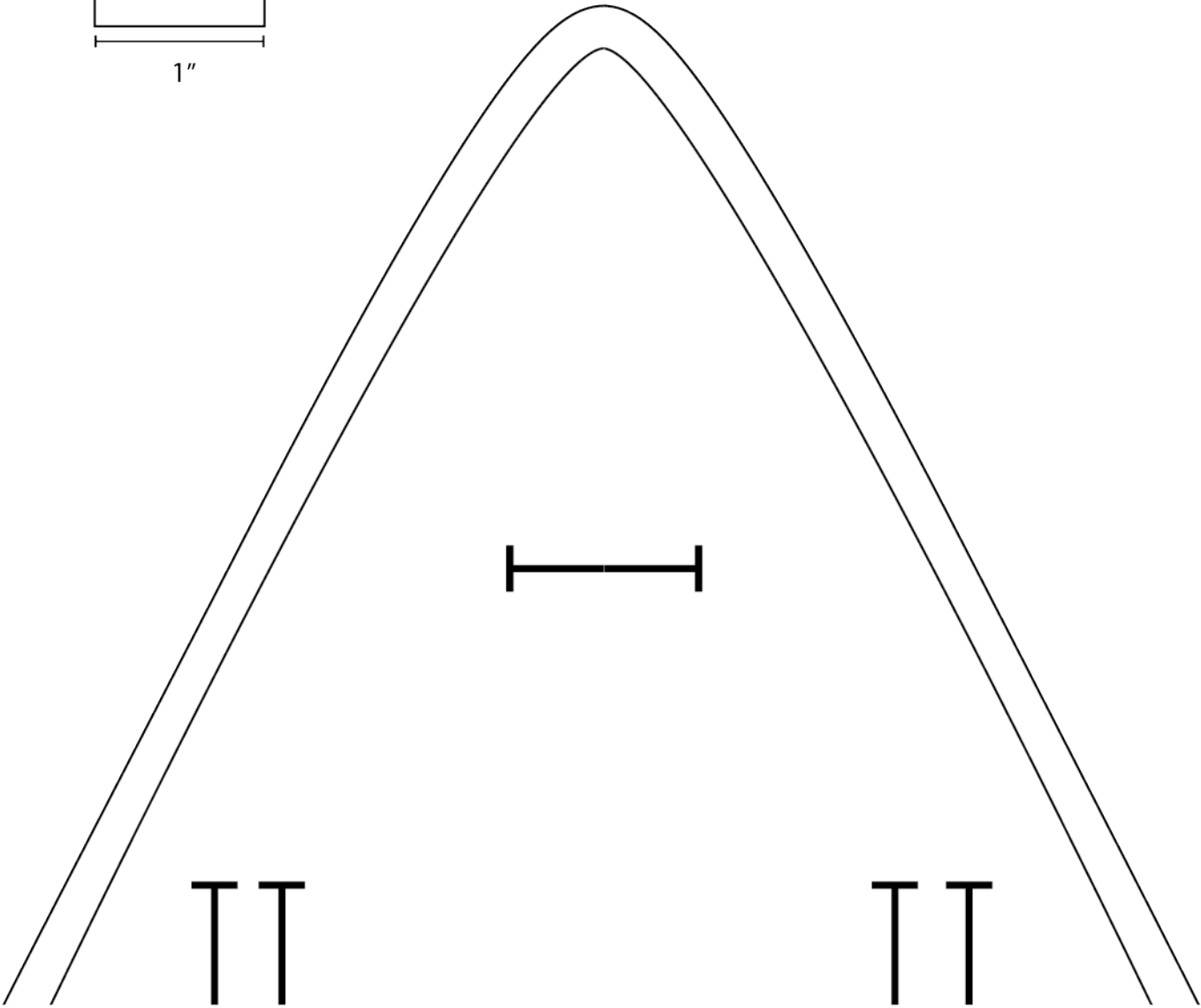
NOTE: While all possible care has been taken to ensure the accuracy of this pattern, We are not responsible for printing errors or the way in which individual work varies.
Please read instructions carefully before starting the construction of this quilt. If desired, wash and iron your fabrics before starting to cut.

TEMPLATES

Printer Test



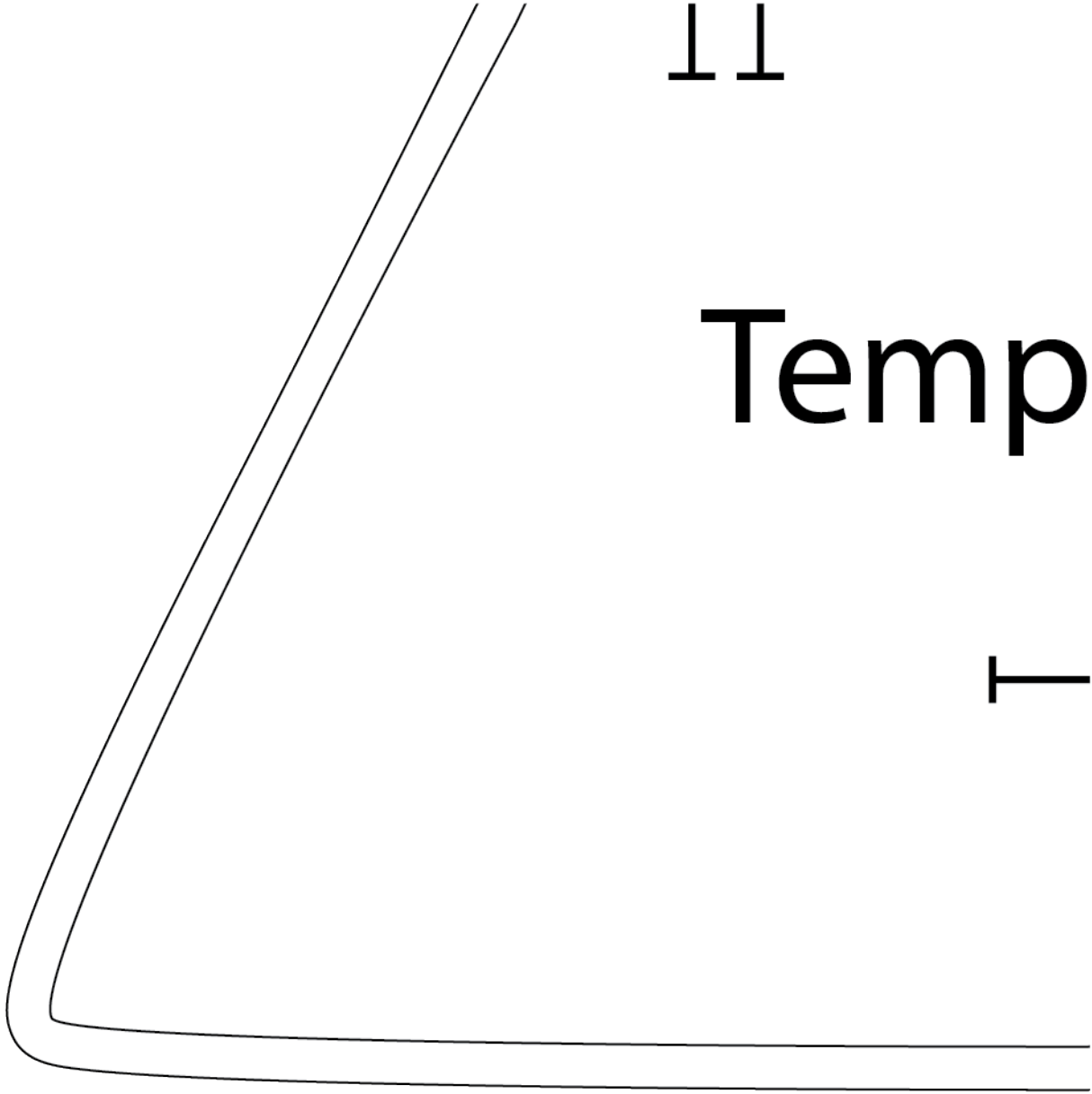
1"



11

Temp

T



11

late 1

1

