

X  
X  
X  
X  
X  
X  
X  
X  
X  
X  
X  
X

# Grace Tote



XXXXXXXXXXXXXXXXXXXXXXXXXXXX



# Grace Tote

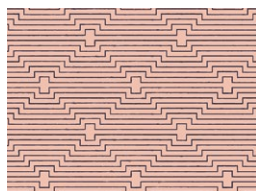
DESIGNED BY AGFstudio



  
**TROUVAILLE**   
FABRICS DESIGNED BY AGF STUDIO



TRV-58120  
EVERBLOOMING CAMELLIAS AGLOW



TRV-58121  
TREASURED FINDINGS

## ADDITIONAL BLENDERS FOR THIS PROJECT



PE-411  
QUARTZ PINK



PE-428  
NOCTURNAL



DEN-S-2006  
ADOBE CLAY



FEEL THE DIFFERENCE © 2020 Courtesy of Art Gallery Quilts LLC. All Rights Reserved.



# Grace Tote

FINISHED SIZE | 19" x 16½"

## FABRIC REQUIREMENTS

Fabric <b>A</b>	TRV-58120	FQ
Fabric <b>B</b>	TRV-58121	¾ yd.
Fabric <b>C</b>	PE-428	½ yd.
Fabric <b>D</b>	DEN-S-2006	⅙ yd.
Fabric <b>E</b>	PE-411	⅝ yd.

LINING FABRIC  
PE-411 (Included)

## Additional Material

- Cording
- Batting

## CUTTING DIRECTIONS

¼" seam allowances are included.  
WOF means width of fabric.

- Twenty eight (28) 2½" squares from fabric **A**
- One (1) 9" x 8 ½" rectangle from fabric **A** (drop in pocket)
- Twenty eight (28) 4½" x 1½" rectangles from fabric **B**
- Fifty six (56) 5½" x 1½" rectangles from fabric **B**
- Twenty eight (28) 6½" x 1½" rectangles from fabric **B**

- Fifty six (56) 2½" x 1½" rectangles from fabric **C**
- Fifty six (56) 4½" x 1½" rectangles from fabric **C**
- One (1) 1½" x WOF strips from fabric **D** (binding)
- One (1) 2" x WOF strip from fabric **D** (handle)
- Two (2) templates 1 from fabric **E** (lining)

## CONSTRUCTION

Sew all rights sides together with ¼" seam allowance.

- Take (28) 2½" squares from fabric **A**, (56) 2½" x 1½" rectangles from fabric **C** and (56) 4½" x 1½" rectangles from fabric **C** and follow the diagram below for the first part of the block assembly.
- Create a total of 28 blocks.

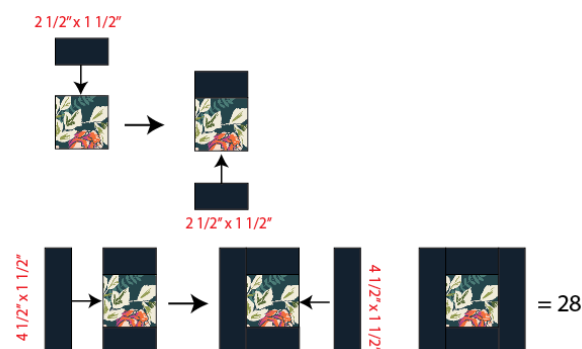


DIAGRAM 1

- Now, take (28) 4½" x 1½" rectangles from fabric **B**, (56) 5½" x 1½" rectangles from fabric **B** and (28) 6½" x 1½" rectangles from fabric **B** and join them following the diagram below for each block assembly.
- Each block should measure 6½" x 6½".

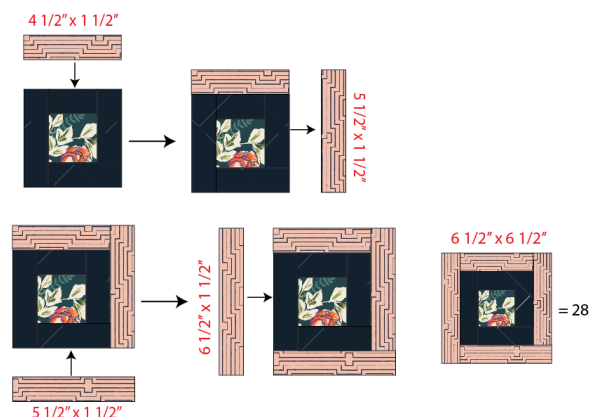


DIAGRAM 2

- Take (14) blocks and join them following the diagram below.
- Repeat the same construction with the remaining (14) blocks.

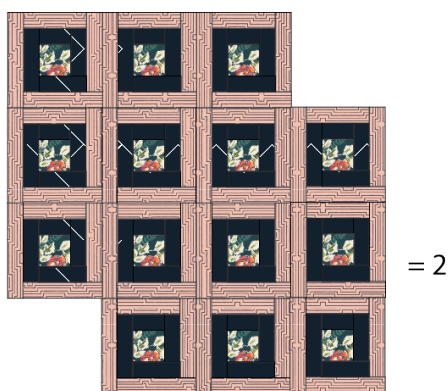
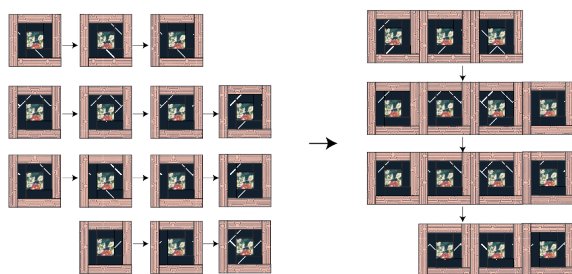


DIAGRAM 3

- Quilt both pieces as desired.
- Rotate the pieces 45 degree and place the tote template on top of one of the pieces.
- Trace and cut.



DIAGRAM 4

- Repeat for the other unit. Now you have the front and back panel of the tote.

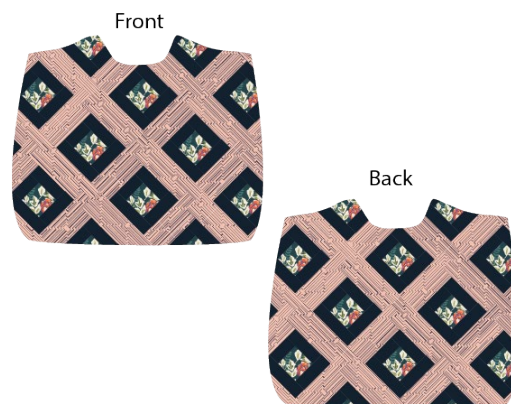


DIAGRAM 5

## LINING & DROP IN POCKET

*Sew rights sides together.*

### Drop in pocket:

- Fold the drop-in pocket rectangle in half, width-wise, matching the fabric right sides. (Diagram 6.1)
- Sew right and left side edges, using a  $\frac{1}{4}$ " seam allowance. Leave the bottom edge open and un-sewn. (Diagram 6.2)
- Turn the pocket flap inside out. Press.
- Stitch a decorative line  $\frac{1}{4}$ " from the folded edge. This will ensure your lined drop-in pocket doesn't wrinkle or buckle during normal use. (Diagram 6.3)
- Line the bottom open edge of the drop-in pocket up with the marked line on the RIGHT side of the bag lining, 3" from the top edge. The TOP of the pocket should be pointing towards the BOTTOM of the bag. (Diagram 6.4) Pin.
- Sew one straight line along the bottom edge of the pocket, using a  $\frac{1}{4}$ " seam allowance.
- Flip the pocket up into its rightful place.
- Edge-stitch the right and left sides of the pocket. Backstitch to lock the seams in place, at the beginning and end of each stitching line. (diagram 6.4)

- Make a vertical stitching line through the pocket and lining fabric at each of the intervals. This will create 3 drop in pockets. (diagram 6.5)
- Create a quilting motif on the pocket if desired.

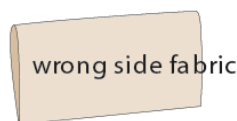


DIAGRAM 6.1

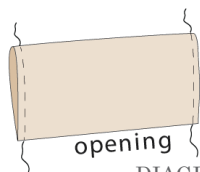


DIAGRAM 6.2

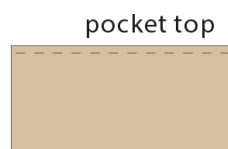


DIAGRAM 6.3

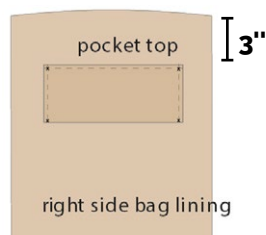


DIAGRAM 6.4

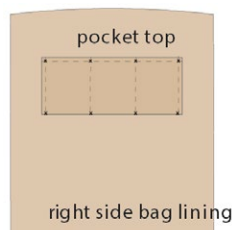


DIAGRAM 6.5

### Creating Boxed Corners

- Sew front and back tote with right sides together at  $\frac{1}{4}$ " seam allowance. Also sew the two lining pieces together but leave a small unsewn portion at the bottom in order to pull right side of the bag through.
- We want to box the interior corners to get a really nice flat bottom on the bag; this way the tote bag will have more body.
- At the corners of your tote draw with a air erasable pen a 3" x 3" square on the wrong side of the fabric. Repeat this process for your front and back tote. (Diagram 7.1)
- Take the exterior of the bag (wrong side out) and pinch apart the two layers of the tote to get a little triangle on one corner. Flatten it down a little bit and make sure the top and bottom seams are lined up. Hold it tight.

XXXXXXXXXXXXXXXXXXXXXXXXXXXXXXXXXXXX

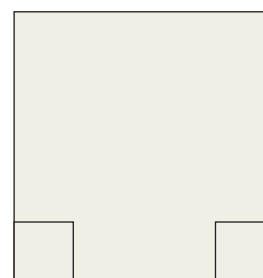


DIAGRAM 7.1

- Points of the squares you drew on each side of the tote should match up. Pin in place and stitch on the line. Repeat this for the other side of your tote as well as your lining pieces. (Diagram 7.2)

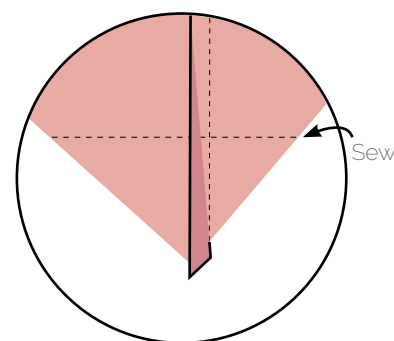


DIAGRAM 7.2

- Insert the lining to the tote bag, wrong sides facing, making sure sides are touching and pin in place.

## BINDING AND HANDLE

*Sew rights sides together.*

- Cut enough strips  $1\frac{1}{2}$ " wide by the width of the fabric **D** to make a long strip. Start sewing the binding strip on one of the edges of the tote, placing the strip right side down and leaving an approximated 5" tail. Sew with  $\frac{1}{4}$ " seam allowance (using straight stitch), aligning the strip's raw edge with the tote top's raw edge.
- Stop stitching  $\frac{1}{4}$ " before the edge of one side of the tote. Clip the threads. Remove the tote from under the machine presser foot. Take the same strip and start placing the binding on the other edge of the tote and sew until the other edge.



- Stop stitching before you reach the last 3 or 4 inches. Cut the threads and remove the tote from under the machine presser foot. Lay the loose ends of the binding flat along the tote edge, folding the ends back on themselves where they meet. Press them together to form a crease.



DIAGRAM 8

- For the piping construction, match the raw edges of the fabric **D** strip, lengthwise, right side in and sew down that line with a  $\frac{1}{4}$ " seam allowance to make a tube.
- Turn the tube right side out, press the tube so the seam falls in the middle, and press.
- Lay your cording 2" away from one end of the handle and stop at 2" away from the other end.
- Match the edges of the fabric strip so it wraps around the cord and pin in place.
- Using a zipper foot, sew around the edge a  $\frac{1}{8}$ " seam.

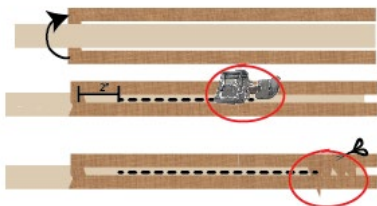


DIAGRAM 9

- Take one handle and pin in place on the curve of the tote, right sides facing.
- Once you've pinned around the tote, you'll have some piping left. Keep those few extra inches unpinned.

- To sew the piping on, use a regular zipper foot and stitch on top of the stitching that's already on the piping. You want to be right up against the rounded part.
- Start sewing where your two ends of piping meet. Begin sewing the piping to the tote with the piping hanging off the tote. Make sure to attach the unsewn edges of the binding to the piping.
- Sew the two open ends of the binding with right sides together (you can help yourself marking with a pencil if the crease is difficult to see).
- When you've attached the handle to the tote bag, take the unpinned extra piping at the end and overlap it on top of the first bit of piping. You want to create a little "V" where the two ends meet.
- Snip off the extra piping from the beginning and the end so they are in line with the edge of the fabric tote.
- Turn binding to back of the tote, turn raw edge inside and stitch by hand using blind stitch.
- Repeat the same instructions for the other handle.



DIAGRAM 10

XXXXXXXXXXXXXXXXXXXXXXXXXXXXXXXXXXXX

*Congratulations*  
*& enjoy*

XXXXXXXXXXXXXXXXXXXXXXXXXXXXXXXXXXXX



[artgalleryfabrics.com](http://artgalleryfabrics.com)

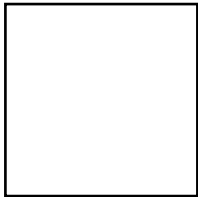
NOTE: While all possible care has been taken to ensure the accuracy of this pattern, We are not responsible for printing errors or the way in which individual work varies.

Please read instructions carefully before starting the construction of this quilt. If desired, wash and iron your fabrics before starting to cut.

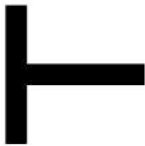
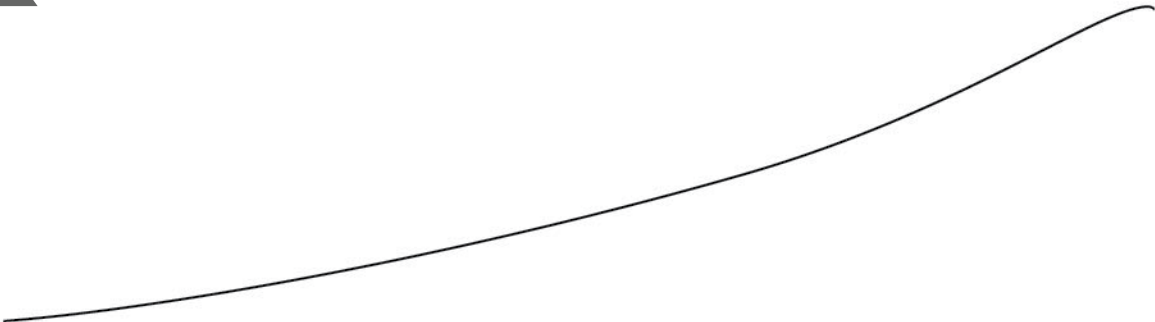
© 2020 Courtesy of Art Gallery Quilts LLC. All Rights Reserved.

TEMPLATE

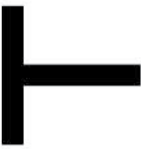
Printer Test

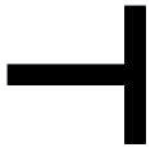


1"



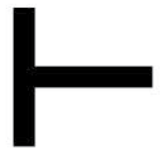






TT

3





# FF

# T

5

